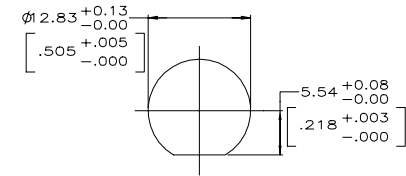
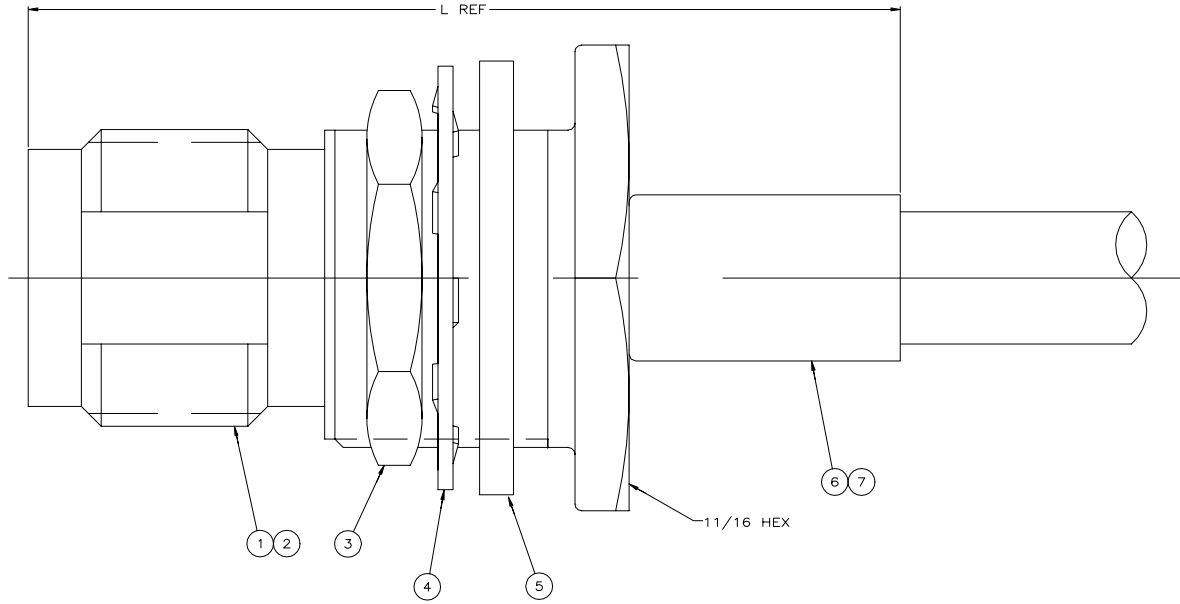
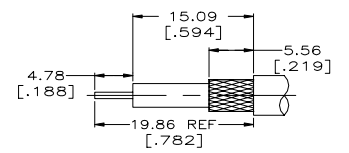


REVISIONS					
P	LR	DESCRIPTION	DATE	DRW	APPD
A		REVISED PER ECR-20-008488	16JUN2020	RZ	RS

- △ USE HAND TOOL: 354940-1
- 2. MAXIMUM PANEL THICKNESS: 6.10 [.240]
- 3. SEE I.S. 9051
- △ OBSOLETE PARTS: OBSOLETE CIS STREAMLINING PER D.RENAUD/D.SINISI



RECOMMENDED PANEL CUTOUT
SCALE: 3:1



RECOMMENDED STRIP LENGTH
SCALE: 3:1

OBsolete	RC-55/U, 55A/U, 55B/U, 223/U	34.93	1.375	220189-1	-	9-329099-0	329633	1-329632-2	1-329631-2	221149-6	414169-1	5414168-8
	RC-142/U, 142A/U, 142B/U, 400/U	34.93	1.375	220189-1	-	9-225382-0	329633	1-329632-2	1-329631-2	2-221149-6	414169-1	5414168-5
	RC-188/U, 316/U TYPE DOUBLE BRAID	34.93	1.375	58330-1	21427-4	9-329049-0	329633	1-329632-2	1-329631-2	2-221149-0	414169-3	5414168-4
	RC-174/U, 188/U, 316/U	34.93	1.375	220210-1	21427-4	9-328666-0	329633	1-329632-2	1-329631-2	2-221149-0	414169-3	5414168-3
	RC-58/U, 58A/U, 58B/U, 58C/U, 141/U, 141A/U	34.93	1.375	220189-1	-	9-50427-1	329633	1-329632-2	1-329631-2	221149-6	414169-1	5414168-1
	FOR USE WITH CABLE		L	DIE SET	△ 7 BUSHING QTY=1	6 FERRULE QTY=1	5 GASKET QTY=1	4 LOCKWASHER QTY=1	3 JAM NUT QTY=1	2 CONTACT QTY=1	1 JACK ASSEMBLY QTY=1	PART NUMBER

THIS DRAWING IS A CONTROLLED DOCUMENT.

DRW: ATTADIA - 31JUN2000	DOCKS: 31JUN2000
DR: HAVENER	31JUN2000
AVD: LIBERTY	
PRODUCT SPEC: 108-12046	
APPLICATION SPEC: TNC	
WEIGHT: 0.000000	SIZE: A1
CUSTOMER DRAWING	SCALE: 10:1

TE Connectivity
JACK ASSEMBLY
BULKHEAD, COMMERCIAL
TNC

RESTRICTED TO: 1 OF 1

单击下面可查看定价，库存，交付和生命周期等信息

[>>TE Connectivity\(泰科\)](#)