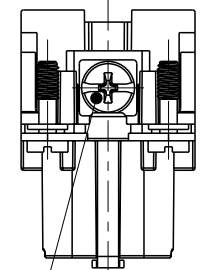
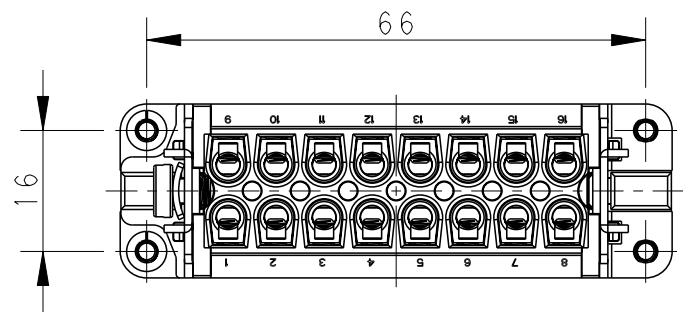
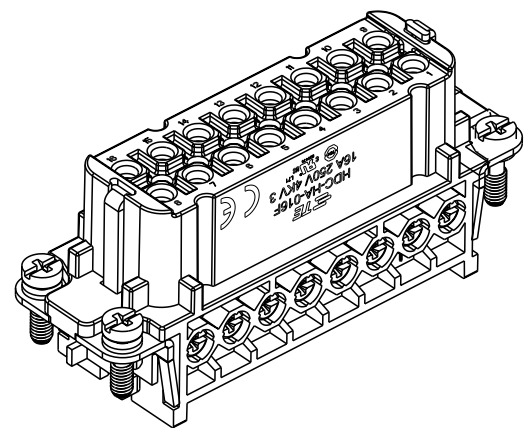
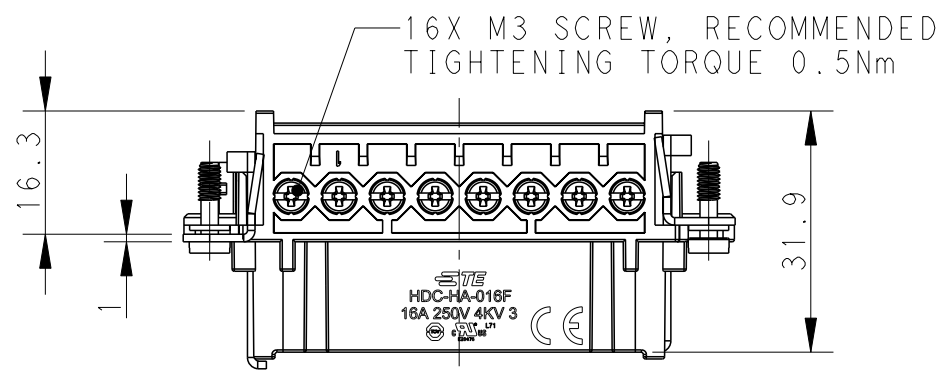


THIS DRAWING IS UNPUBLISHED. RELEASED FOR PUBLICATION 20
 © COPYRIGHT 20 BY - ALL RIGHTS RESERVED.

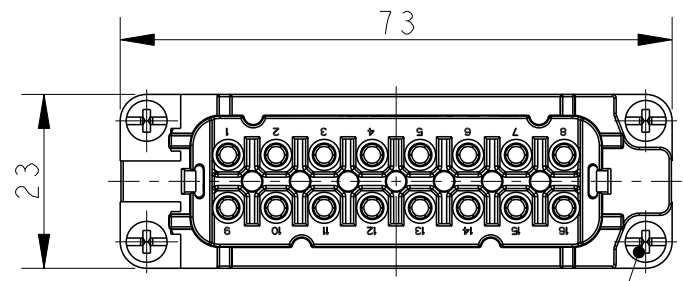
| REVISIONS | | | | | |
|-----------|-----|---------------|-----------|-----|------|
| P | LTR | DESCRIPTION | DATE | DWN | APVD |
| A1 | | ECR-15-004309 | 19MAR2014 | DW | CW |
| B | | ECR-15-013750 | 17SEP2015 | DW | CW |
| B1 | | ECR-15-016224 | 05NOV2015 | DW | CW |
| C | | ECR-20-016101 | 09JUN2021 | BS | CW |



M4 SCREW
RECOMMENDED
TIGHTENING TORQUE 1.2Nm



16X M3 SCREW, RECOMMENDED
TIGHTENING TORQUE 0.5Nm

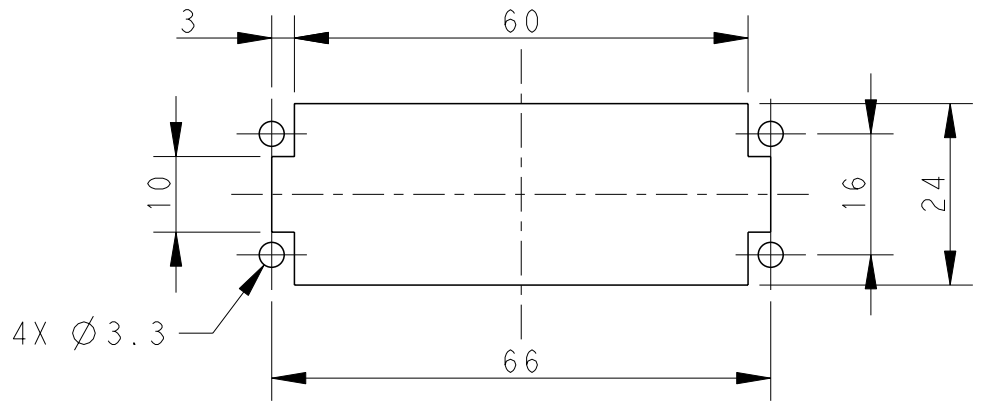


4X M3 SCREW, RECOMMENDED
TIGHTENING TORQUE 0.5Nm

NOTES:
 1. TECHNICAL CHARACTERISTICS:
 INSULATION MATERIAL: PC
 RATED VOLTAGE: 250 V
 RATED CURRENT: 16 A
 INSULATION RESISTANCE: >=400MΩ
 RATED IMPULSE VOLTAGE: 4 KV
 POLLUTION DEGREE: 3
 FLAMMABILITY: UL94V-0
 MATING CYCLES: 500 CYCLES
 WIRE RANGE: 0.5-2.5 mm² (20-14 AWG)
 CONTACT FINISH: SILVER PLATED
 CONTACT TYPE: SCREW CONTACT

注释:
 1. 技术参数:
 绝缘材料: PC
 额定电压: 250V
 额定电流: 16A
 绝缘电阻: >=400MΩ
 额定脉冲电压: 4 KV
 污染等级: 3
 阻燃等级: UL94V-0
 插拔次数: 500 次
 接线范围: 0.5-2.5 mm² (18-14 AWG)
 端子表面处理: 镀银
 接线类型: 螺丝连接

PANEL CUT FOR INSERTS FOR USE
WITHOUT HOODS/ HOUSINGS



THIS DRAWING IS A CONTROLLED DOCUMENT.

| DIMENSIONS: | | TOLERANCES UNLESS OTHERWISE SPECIFIED: | |
|-------------|--------|--|----|
| mm | | | |
| | 0 PLC | ±- | |
| | 1 PLC | ±- | |
| | 2 PLC | ±- | |
| | 3 PLC | ±- | |
| | 4 PLC | ±- | |
| | ANGLES | | ±- |
| MATERIAL | | FINISH | |
| - | | - | |

| | |
|------------------|------------|
| DWN | 10NOV2014 |
| CHK | David Wang |
| APVD | Chris Wang |
| PRODUCT SPEC | Xiang Xu |
| APPLICATION SPEC | 108-137045 |
| WEIGHT | 114-137045 |
| Customer Drawing | |

| | | | |
|-----------------|-----------|--------------------|---------------|
| HA-016-F | | T2010162201-000 | |
| DESCRIPTION | | PART NUMBER | |
| | | | |
| TE Connectivity | | | |
| NAME: HA-016-F | | | |
| SIZE | CAGE CODE | DRAWING NO | RESTRICTED TO |
| A3 | 00779 | ©-T2010162201000 | - |
| SCALE 1:1 | | SHEET 1 OF 1 REV C | |

printed on 9 Jun 2021 13:10 (China Standard Time) from TE236667

单击下面可查看定价，库存，交付和生命周期等信息

[>>TE Connectivity\(泰科\)](#)