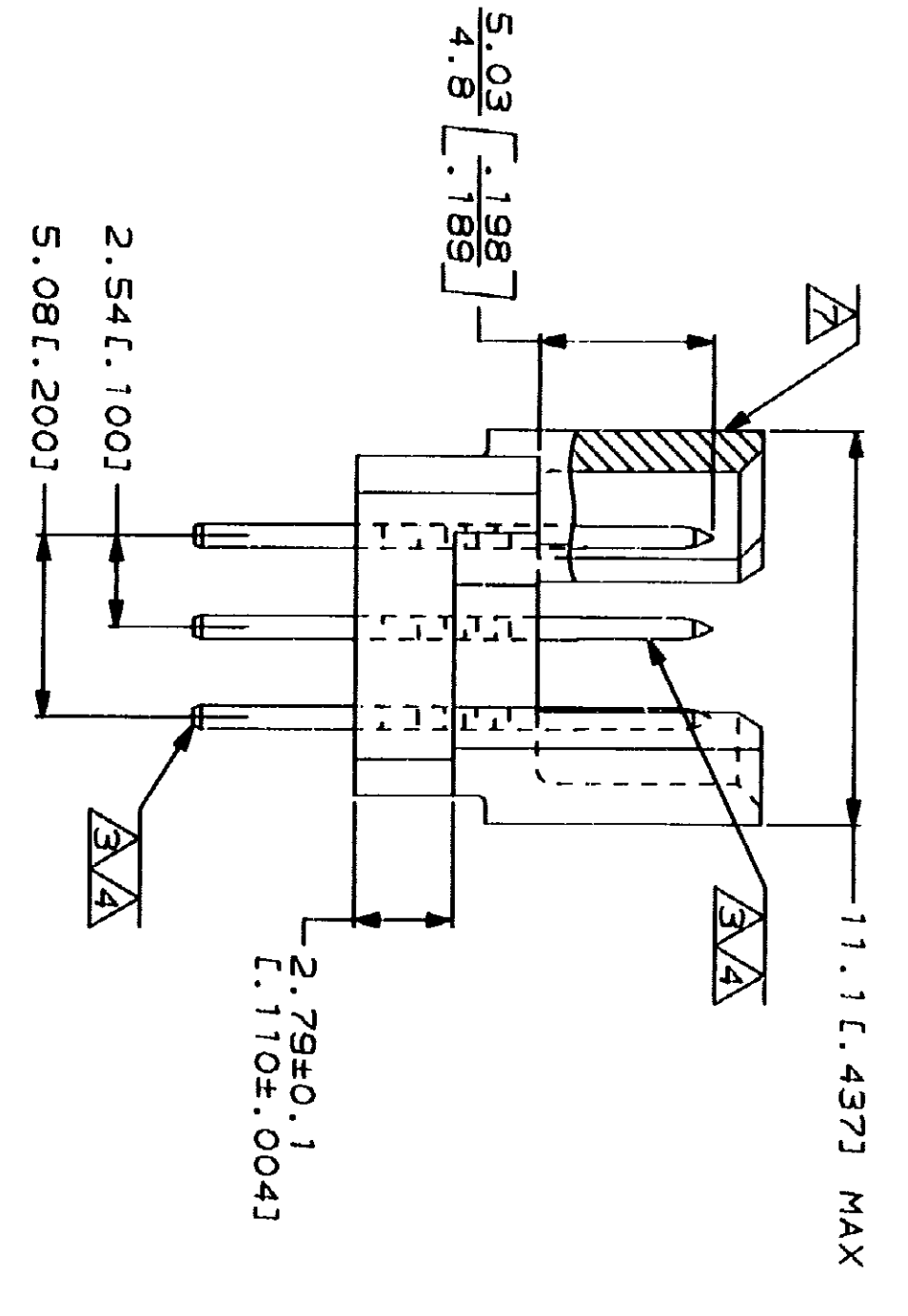


PC BOARD LAYOUT

LOC	QTY	REV	ZONE	LT#	DESCRIPTION	DATE	APP
AD	25			0	DRAWN		
				B	ECN A05586, A05640	8/18/91	LSB
				C	ECN A05876	11/14/91	LSB
				D	ECN A05871	12/8/91	LSB
				E	ECN A05255	8/2/91	LSB
				F	EC 0010-1559-93	11/8/91	LSB
				G	EC 0010-0436-94	3/25/94	LSB

- △ HOUSING MATERIAL: GLASS-FILLED POLYESTER. COLOR: GRAY.
- △ POST MATERIAL: BRASS.
- △ POST FINISH: DIN 41612 CLASS 3 IN CONTACT AREA.
- △ TIN-LEAD PLATE ON POSTS.
- △ POST FINISH: DIN 41612 CLASS 2 IN CONTACT AREA.
- △ TIN-LEAD PLATE ON POSTS.
- △ RECOMMENDED HOLE SIZE FOR MANUAL APPLICATION OF CONNECTOR ONTO PC BOARD.
- △ [PART NUMBER, DATE CODE] MARKED THIS APPROXIMATE AREA.
- △ MARKING ON THIS SIDE.



SUPERSEDED BY 550910-5

REV	DATE	DESCRIPTION	NO. OF LOADED POSITIONS	ASSY PART NUMBER
1	1-40		120	550910-9
2	1-40		120	550910-5

NOTES	POSITIONS LOADED	ROWS LOADED	NO. OF LOADED POSITIONS	ASSY PART NUMBER
	C	B	A	

DO NOT SCALE PRINT.
 UNLESS SPECIFIED DIMENSIONS IN MM (INCHES)
 1 PLG DEC ± .01
 2 PLG DEC ± 0.131 (0.051)
 ANGLES
 MATERIAL
 HOUSING △
 POST △

DR	DATE	NAME	PART NO
L. BRINER	3/18/91		
D.C. RUBENDALL	3/26/91		
D.C. RUBENDALL	3/26/91		
K.R. PARKER	3/26/91		

AMP
 AMP Incorporated
 Harrisburg, PA 17105-3608

PIN ASSEMBLY, EUROCARD,
 TYPE "R"

APPLICATION SPEC
 SIZE CAGE CODE DRAWING NO
 00779 D 650910

WEIGHT SCALE 5.1 SHEET 1 OF 1

单击下面可查看定价，库存，交付和生命周期等信息

[>>TE Connectivity\(泰科\)](#)