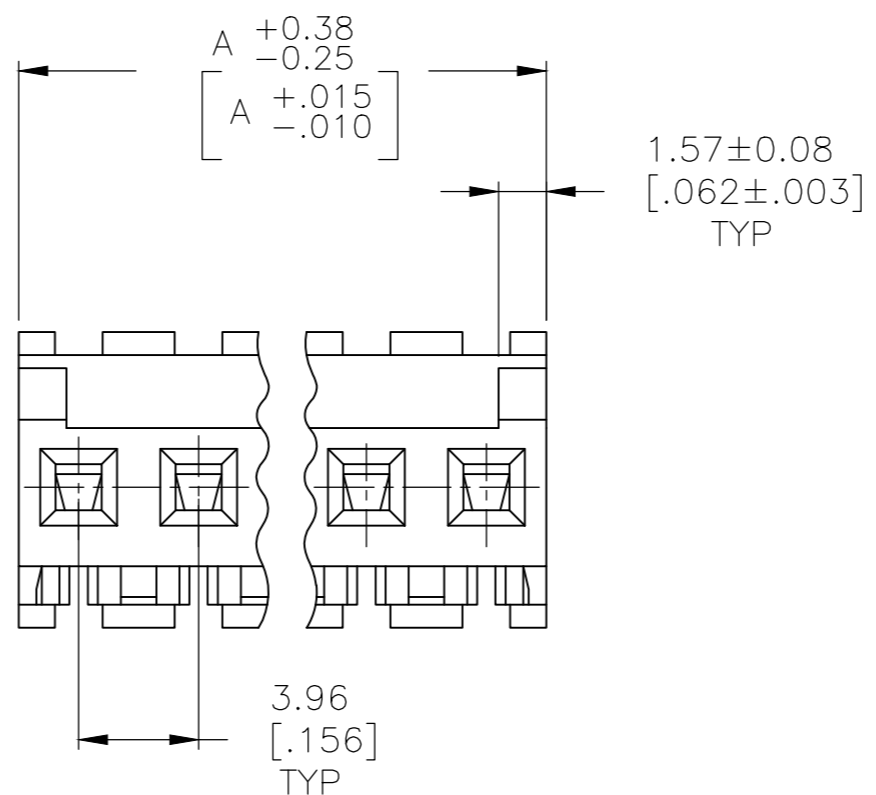
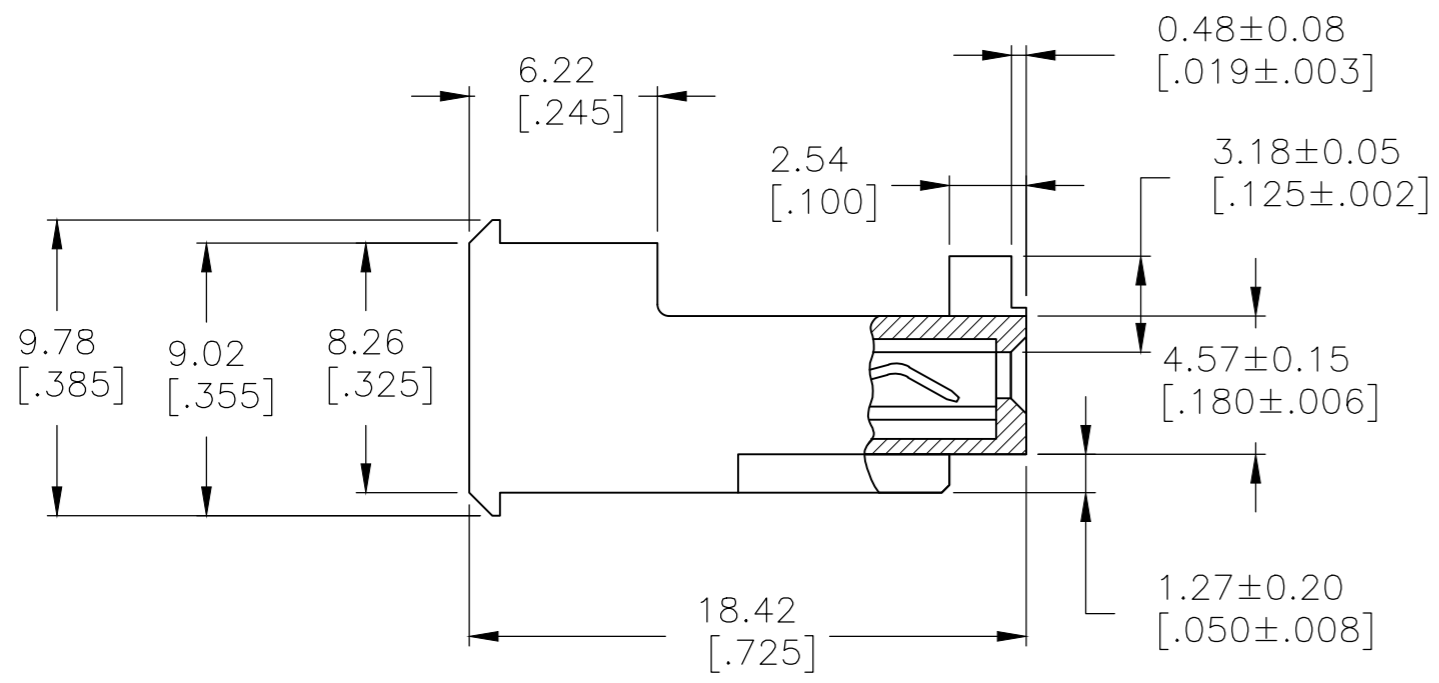
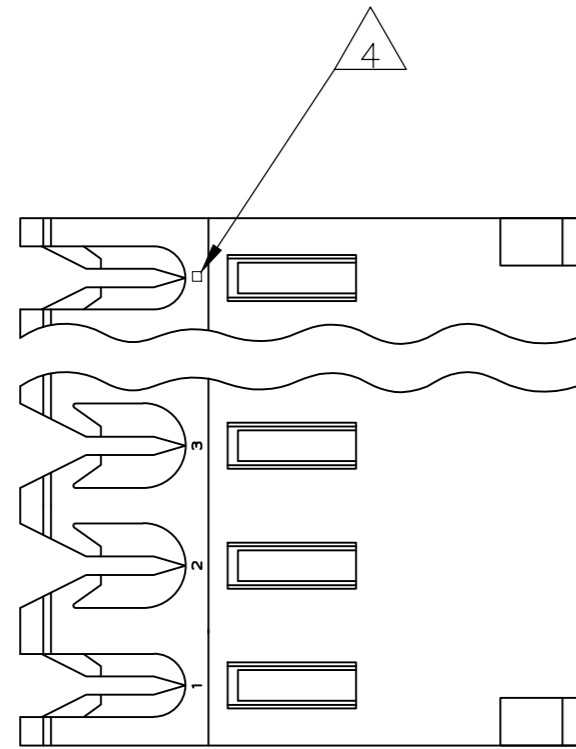


THIS DRAWING IS UNPUBLISHED. RELEASED FOR PUBLICATION  
 © COPYRIGHT - By - TE CONNECTIVITY ALL RIGHTS RESERVED.

LOC		DIST		REVISIONS			
P	LTR	DESCRIPTION		DATE	DWN	APVD	
CM	54	E		REVISED PER ECR-20-000820	27MAY2020	PC SW	

- 1 MATERIAL: CONNECTOR - NYLON UL94V-2 (YELLOW)  
 CONTACTS - 0.30[.012] THICK COPPER ALLOY  
 (BRIGHT TIN-LEAD 0.00203[.000080] MIN. THICK FOR CONTACTS 644470-2 THRU 1-644470-4)  
 (MATTE WHISKER MITIGATED TIN 0.00203[.000080] MIN THICKNESS OVER NICKEL UNDERPLATE FOR 3-644470-2 THRU 4-644470-4).
- 2 CONTACTS ACCEPT 20 AWG WIRE WITH 2.41[.095] MAX INSULATION DIAMETER.
- 3 CONTACTS MUST ACCEPT 1.14±0.03[.045±.001] SQUARE POST AND REMAIN LOCKED IN POSITION.
- 4 IDENTIFICATION NUMBER FOR LAST CIRCUIT MAY NOT APPEAR ON ALL ASSEMBLIES.
- 5 DIMENSIONS IN BRACKETS ARE IN INCHES.
- 6 HOUSING FEATURES ARE: FEED-THRU WITHOUT LOCKING RAMP AND WITH POLARIZING TAB.
- 7 OBSOLETE PARTS: OBSOLETE CIS STREAMLINING PER D.RENAUD/D.SINISI
- 8 OBSOLETE PARTS



DIM A	NO OF CIRCUITS	PART NO
55.47 [2.184]	14	4-644470-4
51.51 [2.028]	13	4-644470-3
47.55 [1.872]	12	4-644470-2
43.59 [1.716]	11	4-644470-1
39.62 [1.560]	10	4-644470-0
35.66 [1.404]	9	3-644470-9
31.70 [1.248]	8	3-644470-8
27.74 [1.092]	7	3-644470-7
23.77 [.936]	6	3-644470-6
19.81 [.780]	5	3-644470-5
15.85 [.624]	4	3-644470-4
11.89 [.468]	3	3-644470-3
7.92 [.312]	2	3-644470-2
55.47 [2.184]	14	<del>1-644470-4</del>
51.51 [2.028]	13	<del>1-644470-3</del>
47.55 [1.872]	12	<del>1-644470-2</del>
43.59 [1.716]	11	<del>1-644470-1</del>
39.62 [1.560]	10	<del>1-644470-0</del>
35.66 [1.404]	9	<del>644470-9</del>
31.70 [1.248]	8	<del>644470-8</del>
27.74 [1.092]	7	<del>644470-7</del>
23.77 [.936]	6	<del>644470-6</del>
19.81 [.780]	5	<del>644470-5</del>
15.85 [.624]	4	<del>644470-4</del>
11.89 [.468]	3	<del>644470-3</del>
7.92 [.312]	2	<del>644470-2</del>

7 SUPERSEDED  
 8 SUPERSEDED

THIS DRAWING IS A CONTROLLED DOCUMENT.

DWN B. LEWIS 12 FEB 91		TE Connectivity	
CHK R. SWING 12 FEB 91		NAME	
APVD D.R. CLARK 20 FEB 91		MTA 156 CONNECTOR ASSEMBLY, 20 AWG, STANDARD	
PRODUCT SPEC 108-1051		SIZE	CAGE CODE
APPLICATION SPEC 114-1020	A2	00779	C=644470
MATERIAL	WEIGHT	RESTRICTED TO	
FINISH	CUSTOMER DRAWING	SCALE 4:1	SHEET 1 OF 1

单击下面可查看定价，库存，交付和生命周期等信息

[>>TE Connectivity\(泰科\)](#)