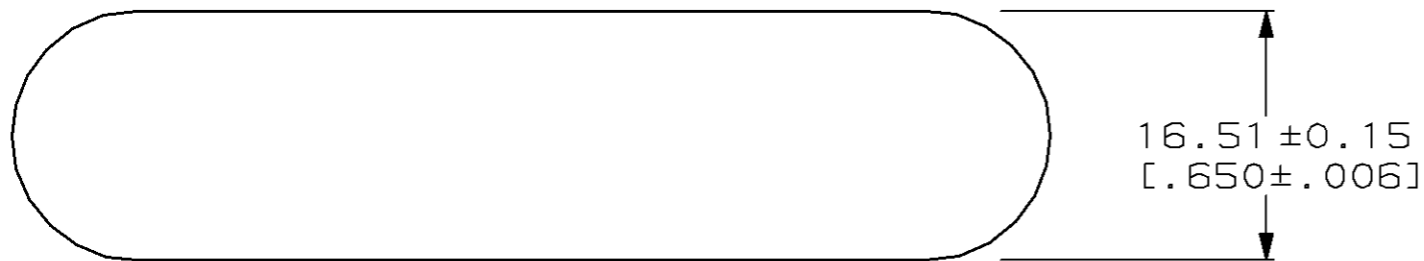


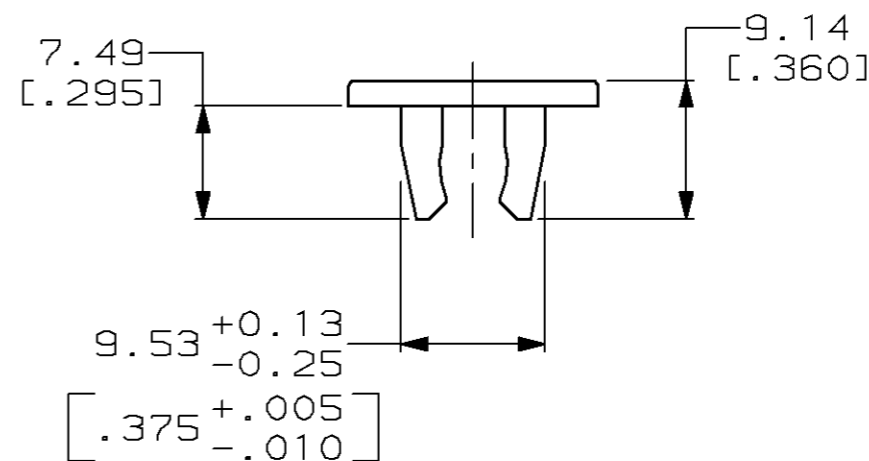
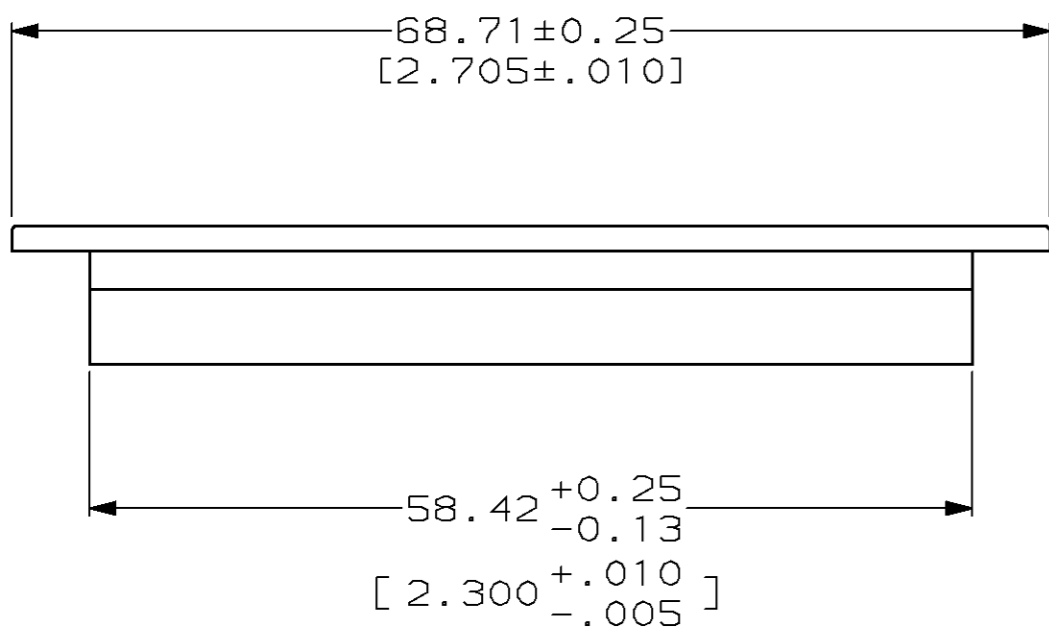
THIS DRAWING IS UNPUBLISHED. RELEASED FOR PUBLICATION, 19 .
 © COPYRIGHT 19 BY AMP INCORPORATED. ALL RIGHTS RESERVED.

LOC	DIST	REVISIONS			
P	LTR	DESCRIPTION	DATE	DWN	APVD
AA	20	A	REV; EC 0502-0123-96	19SEPT96	DS MH



1. MATERIAL: POLYETHYLENE MOLDING COMPOUND, BLUE.

2. THIS DRAWING RESTRICTED TO AT&T CO.



569334-1
PART NO.

THIS DRAWING IS A CONTROLLED DOCUMENT FOR AMP INCORPORATED. IT IS SUBJECT TO CHANGE AND THE CONTROLLING ENGINEERING ORGANIZATION SHOULD BE CONTACTED FOR THE LATEST REVISION.		DWN T. SPRINKLE 4-17-95	AMP Incorporated Harrisburg, PA 17105-3608
DIMENSIONS: mm [INCHES]		CHK D. HUSSEY 5-9-95	
		APVD M. HUGHES 9-12-95	
TOLERANCES UNLESS OTHERWISE SPECIFIED:		PRODUCT SPEC	NAME COVER, DUST, PLUG, 50 POSITION, CHAMP
0 PLC ±- 1 PLC ±- 2 PLC ±0.13 [0.005] 3 PLC ±- 4 PLC ±- ANGLES ±-		APPLICATION SPEC	SIZE A3
MATERIAL △	FINISH -	WEIGHT -	CAGE CODE 00779
		RESTRICTED CUSTOMER	DRAWING NO C-569334
			SCALE 2:1 SHEET 1 OF 1 REV A

单击下面可查看定价，库存，交付和生命周期等信息

[>>TE Connectivity\(泰科\)](#)