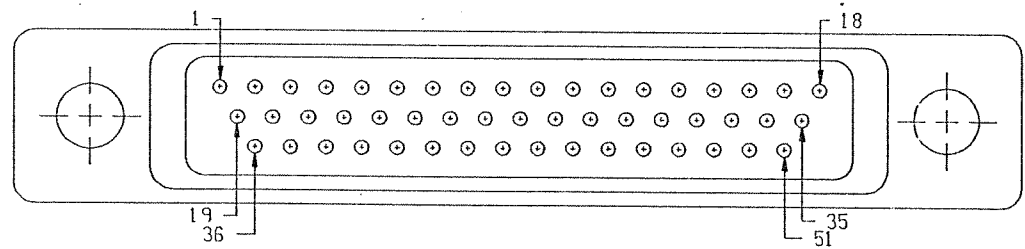
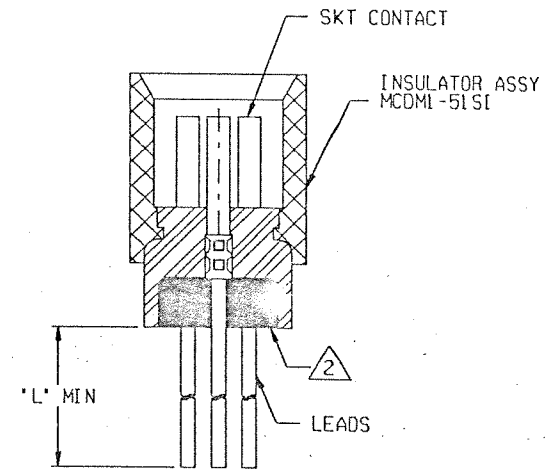
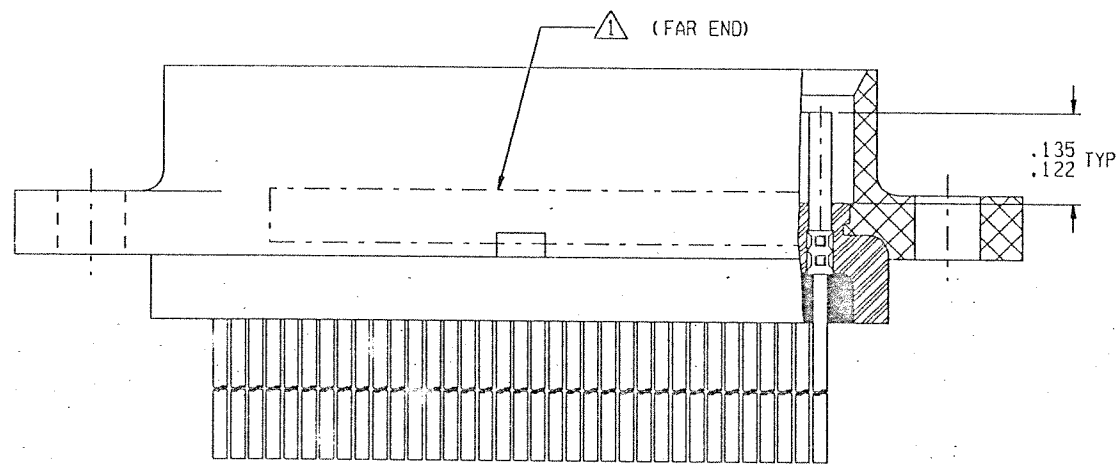
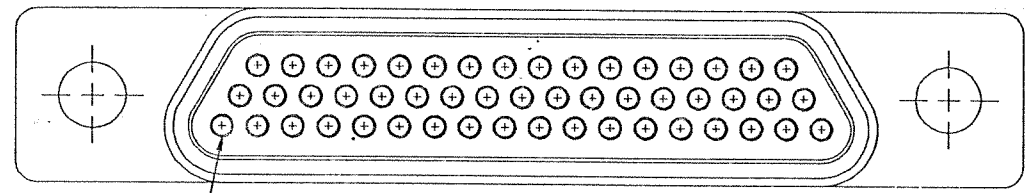



REVISION					
ZONE	LTR	ECN	DESCRIPTION	DATE	APPROVED
	B	39399	GENERAL DWG UPDATE	4/20/05	mcg



2-1532133-2

NOTES: UNLESS OTHERWISE SPECIFIED

- ▲ MARK PER TIS.
- ▲ POTTING COMPOUND USED IS 194-8102-6215/6225.
- 3. CRIMP LEADS INTO CONTACTS PER MEP 302-05.
- 4. EPOXY WICKING FROM THE REAR OF INSULATOR ON THE INSULATED LEADS MUST NOT EXCEED .125 MAX ON #25 AWG AND SMALLER LEADS AND .200 MAX ON #24 AWG AND LARGER LEADS.

UNLESS OTHERWISE SPECIFIED DIMENSIONS ARE IN INCHES. TOLERANCE ARE: FRACTIONS DECIMALS ANGLES ± 1/8 .XX ± .01 ± 2° XXX ± .005	APPROVALS		 MICRODOT CONNECTORS A DIVISION OF UNI-STAR INDUSTRIES INC. 306 PASADENA AVE., SO. PASADENA, CA 91030	PROD CODE 842 CODE M
	SIGNATURE	DATE		
MATERIAL:	DRAWN BY MEL F. CAMPOS	09/20/99	METAL SHELL 'D' CONNECTOR MCDML-B-51S	SIZE CODE IDENT NO. DRAWING NO. A 98278 095-0000-0094
	P.E. <i>M. Campos</i>			
	H.E.			
FINISH:	THIS DOCUMENT IS THE PROPERTY OF MICRODOT CONNECTORS, A DIVISION OF UNI-STAR INDUSTRIES INC. USE OF THIS DOCUMENT OR ANY PART THEREOF IS STRICTLY FORBIDDEN WITHOUT THE EXPRESS WRITTEN PERMISSION OF MICRODOT CONNECTORS, A DIVISION OF UNI-STAR INDUSTRIES INC.		SCALE: NONE	SHEET 1 OF 1

单击下面可查看定价，库存，交付和生命周期等信息

[>>TE Connectivity\(泰科\)](#)