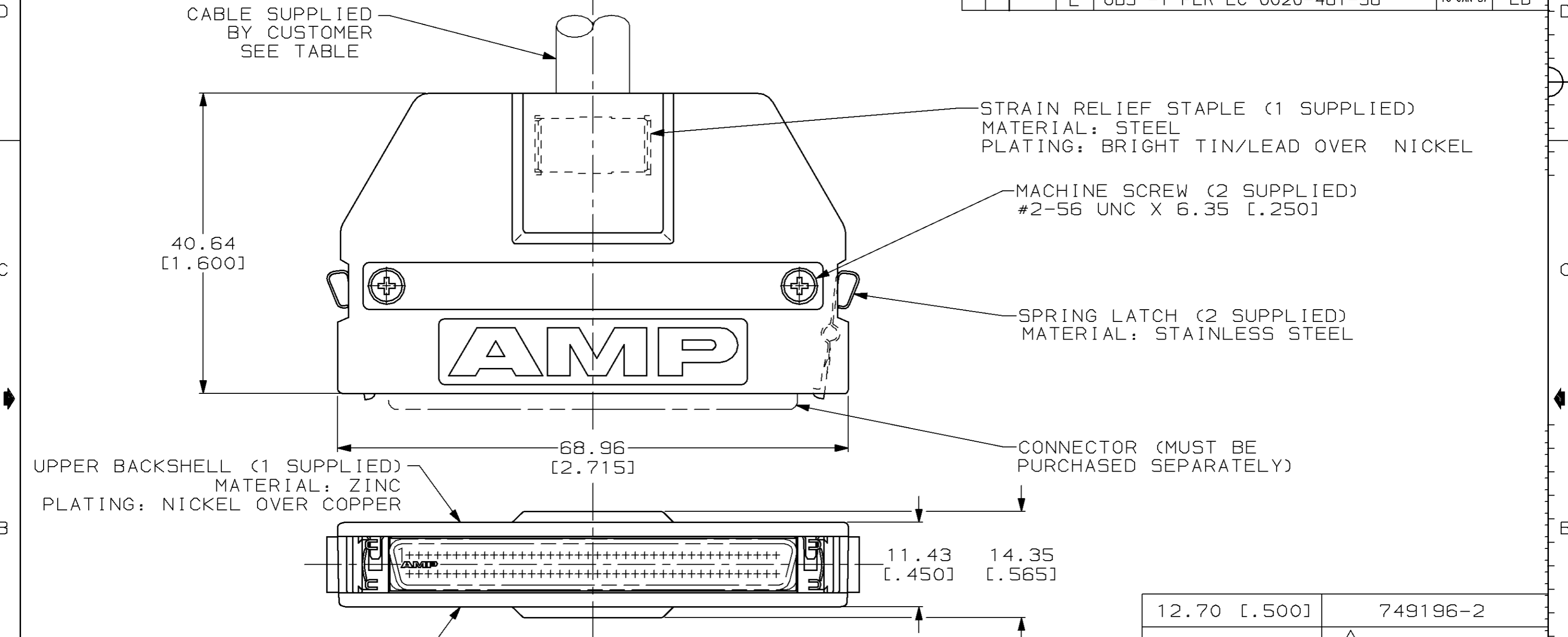


THIS DRAWING IS UNPUBLISHED. RELEASED FOR PUBLICATION, 19 .
 © COPYRIGHT 19 BY AMP INCORPORATED. ALL INTERNATIONAL RIGHTS RESERVED.

LOC	DIST	P	F	ZONE	LTR	DESCRIPTION	DATE	APPD
BD	95				D	ADDED -2 PER NPR 3466	05/02/91	-
					E	OBS -1 PER EC 0020-481-96	10 JAN 97	LB



UPPER BACKSHELL (1 SUPPLIED)
 MATERIAL: ZINC
 PLATING: NICKEL OVER COPPER

LOWER BACKSHELL (1 SUPPLIED)
 MATERIAL: ZINC
 PLATING: NICKEL OVER COPPER

12.70 [.500]	749196-2
10.67 [.420]	¹ 749196-1
MAX CABLE DIA	PART NO

DO NOT SCALE PRINT. UNLESS SPECIFIED DIMENSIONS IN mm [INCHES] TOLERANCES ON: 2 PLC DEC ± - 3 PLC DEC ± 0.38 [.015] ANGLES ± -	DR 12-20-88 M.A. McCAFFREY
	CHK 12-20-88 M.E. SHIRK
	APPD 12-20-88 J. BROSCARD
	APPD 12-20-88 C.E. REYNOLDS
MATERIAL -	PRODUCT SPEC -
FINISH -	APPLICATION SPEC -
	WEIGHT -

AMP AMP INCORPORATED Harrisburg, Pa. 17105		
NAME INDIVIDUAL KIT, UNASSEMBLED, 80 POSITION, STRAIGHT EXIT, UNKEYED, AMPLIMITE .050 Series		
SIZE B	FSCM NO 00779	DRAWING NO 749196
SCALE 2:1	SHEET 1 OF 1	

¹ OBSOLETE PART NUMBER.

单击下面可查看定价，库存，交付和生命周期等信息

[>>TE Connectivity\(泰科\)](#)