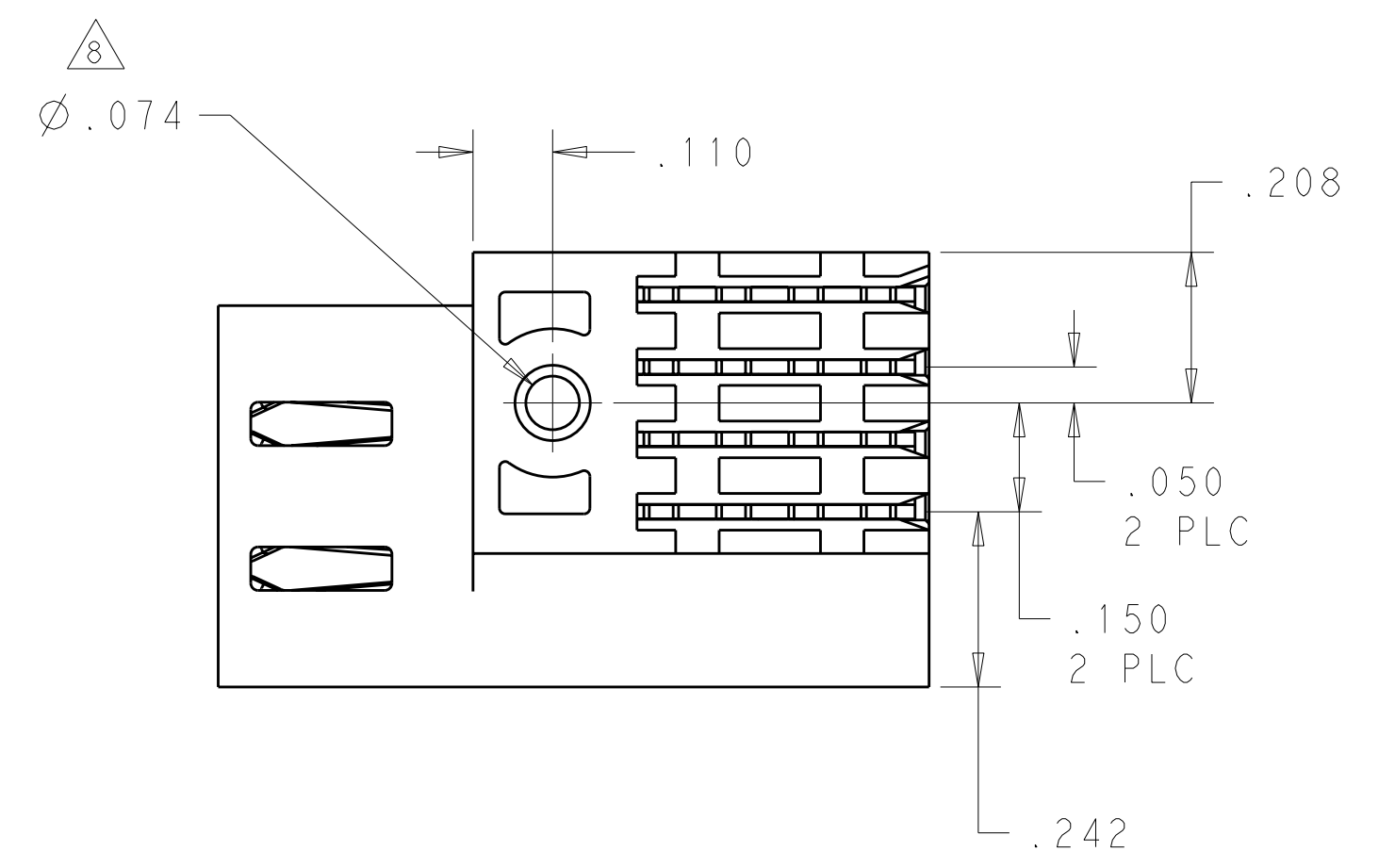
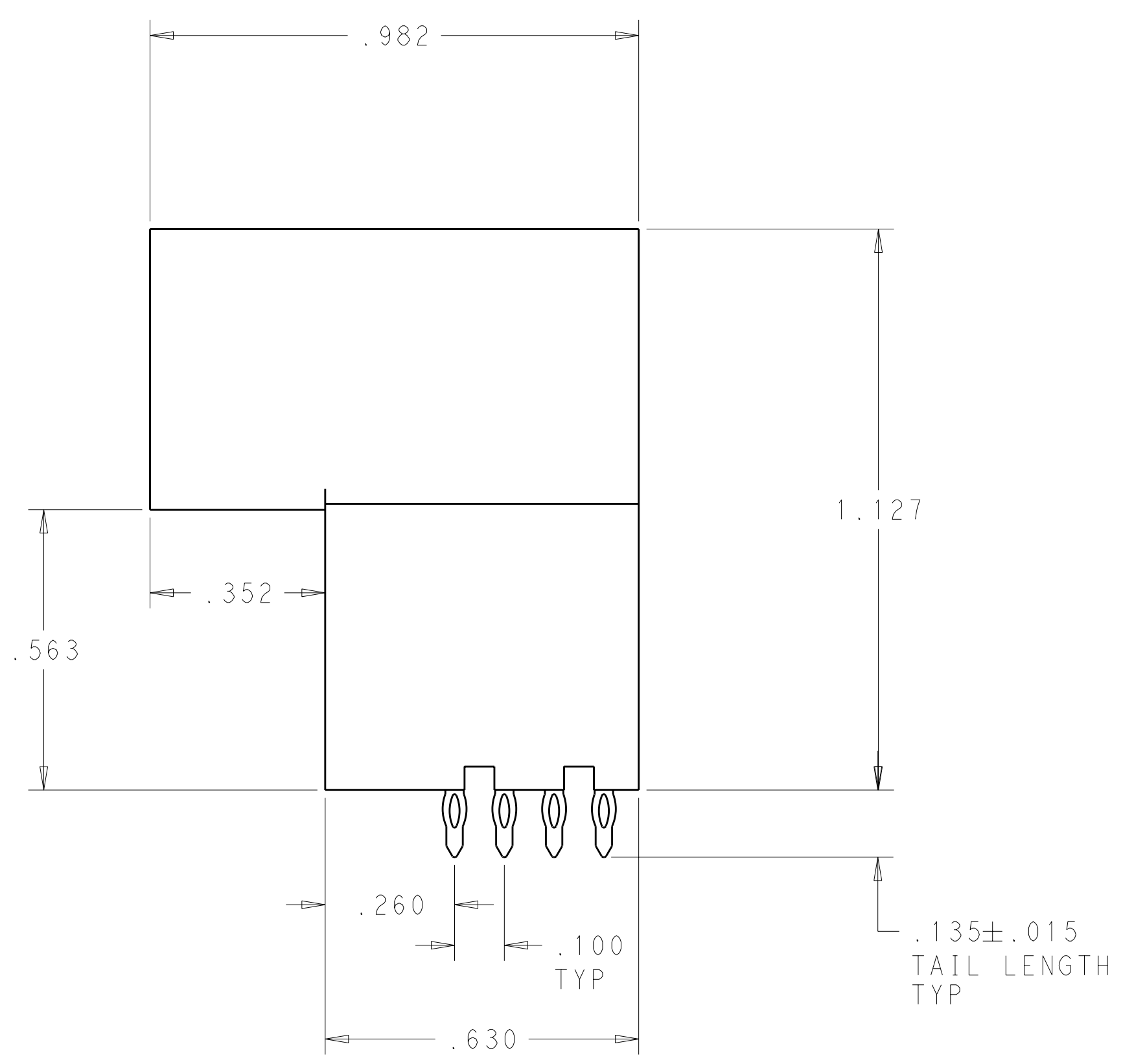
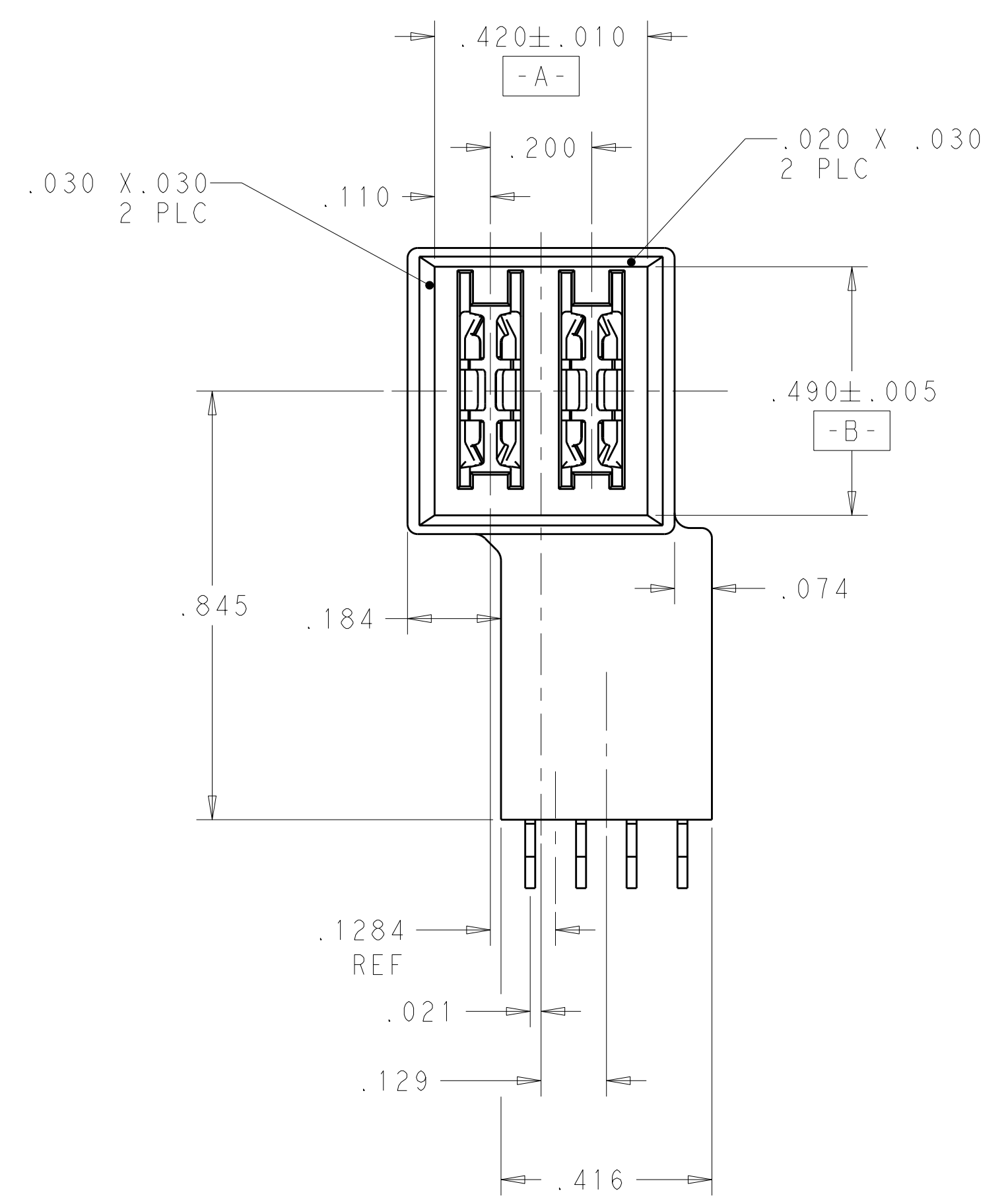
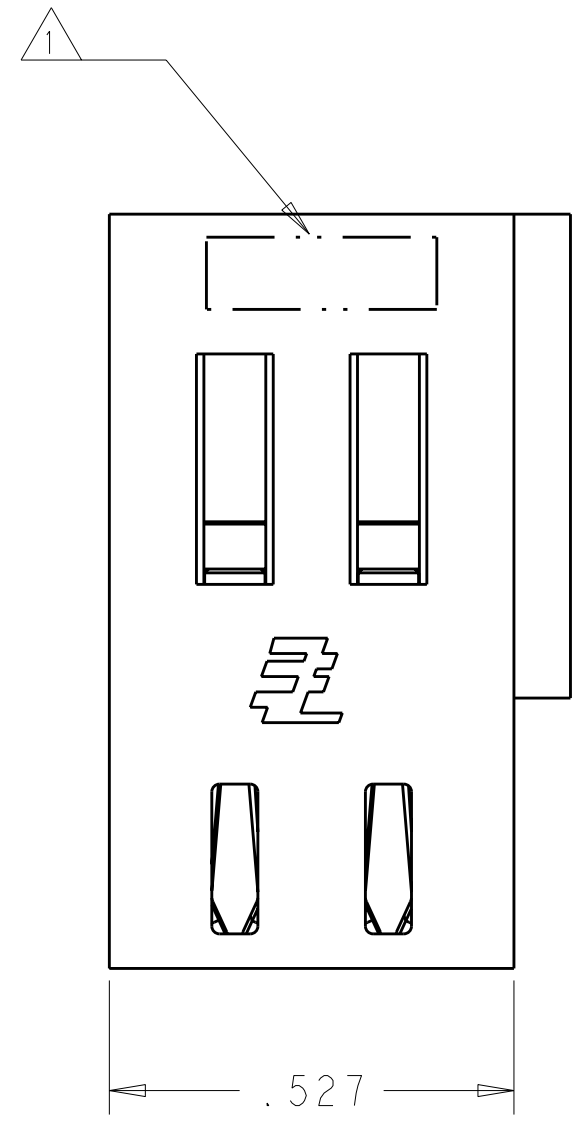


LOC	DIST	REV	DATE	DWN	APVD
ES	00	B	10OCT2011	CZ	SY
		DESCRIPTION			
		REV PER ECR-11-020579			



- △ "AMP", TRADEMARK, PART NUMBER AND DATE CODE TO BE MARKED IN AREA SHOWN
- △ MATERIAL: HOUSING - GLASS FILLED HIGH TEMP THERMO PLASTIC, UL94 V-0
 SIGNAL CONTACT - HIGH CONDUCTIVITY COPPER ALLOY
 POWER CONTACT - HIGH CONDUCTIVITY COPPER ALLOY
 POWER CONTACTS - .000050 MIN Ni UNDER ALL
 .000030 MIN Au ON CONTACT AREA
 .000100 MIN Sn AT PCB INTERFACE
- △ MECHANICAL CONNECTOR KEEP OUT ZONE
- △ DATUM AND BASIC DIMENSIONS ESTABLISHED BY CUSTOMER
- △ PCB - ALL HOLE DIAMETERS ARE FINISHED HOLE SIZES
- △ PCB - .0453 ± .0010 DRILLED HOLES PLATED WITH .0003 MIN Sn OVER
 .001 TO .003 CU PLATING TO ACHIEVE A .040 ± .003 DIA HOLE
- ⓐ △ RECOMMENDED TORQUE IS 4 IN.LB WHEN SCREW 2057509-1 IS USED AND
 ASSUMED THAT THE CARD THICKNESS IS 3MM
- △ A LUBRICANT COMPOSED KRYTOX APPLIED TO THE MATING INTERFACE OF THE CONTACTS
- △ A LUBRICANT HMI5 APPLIED TO THE MATING INTERFACE OF THE CONTACTS

SUPERSEDED BY 1892714-2

REV	DATE	DESCRIPTION	DATE	DWN	APVD
2P		1892714-2			
2P		1892714-1			
LUBRICANT		DESCRIPTION	PART NUMBER		
		TE Connectivity			
DWN		05MAR2010	NAME		
C.K. ZHOU		05MAR2010	RIGHT ANGLE PLUG ASSEMBLY WITH RAISED HEIGHT MULTI-BEAM XLE		
C.K. S. ZHAO		05MAR2010	SIZE		
APVD			CAGE CODE		
PRODUCT SPEC			DRAWING NO		
APPLICATION SPEC			RESTRICTED TO		
WEIGHT			A100779C=1892714		
CUSTOMER DRAWING			IBM		
SCALE			SHEET 1 OF 3		
			REV B		

THIS DRAWING IS A CONTROLLED DOCUMENT.		DWN		05MAR2010	
DIMENSIONS:		C.K. ZHOU		05MAR2010	
INCHES		C.K. S. ZHAO		05MAR2010	
TOLERANCES UNLESS OTHERWISE SPECIFIED:		APVD			
9 PLC ±		PRODUCT SPEC			
3 PLC ±		APPLICATION SPEC			
5 PLC ±.005		WEIGHT			
4 PLC ±.0020		CUSTOMER DRAWING			
ANGLES		SCALE			
FINISH		SHEET		1 OF 3	

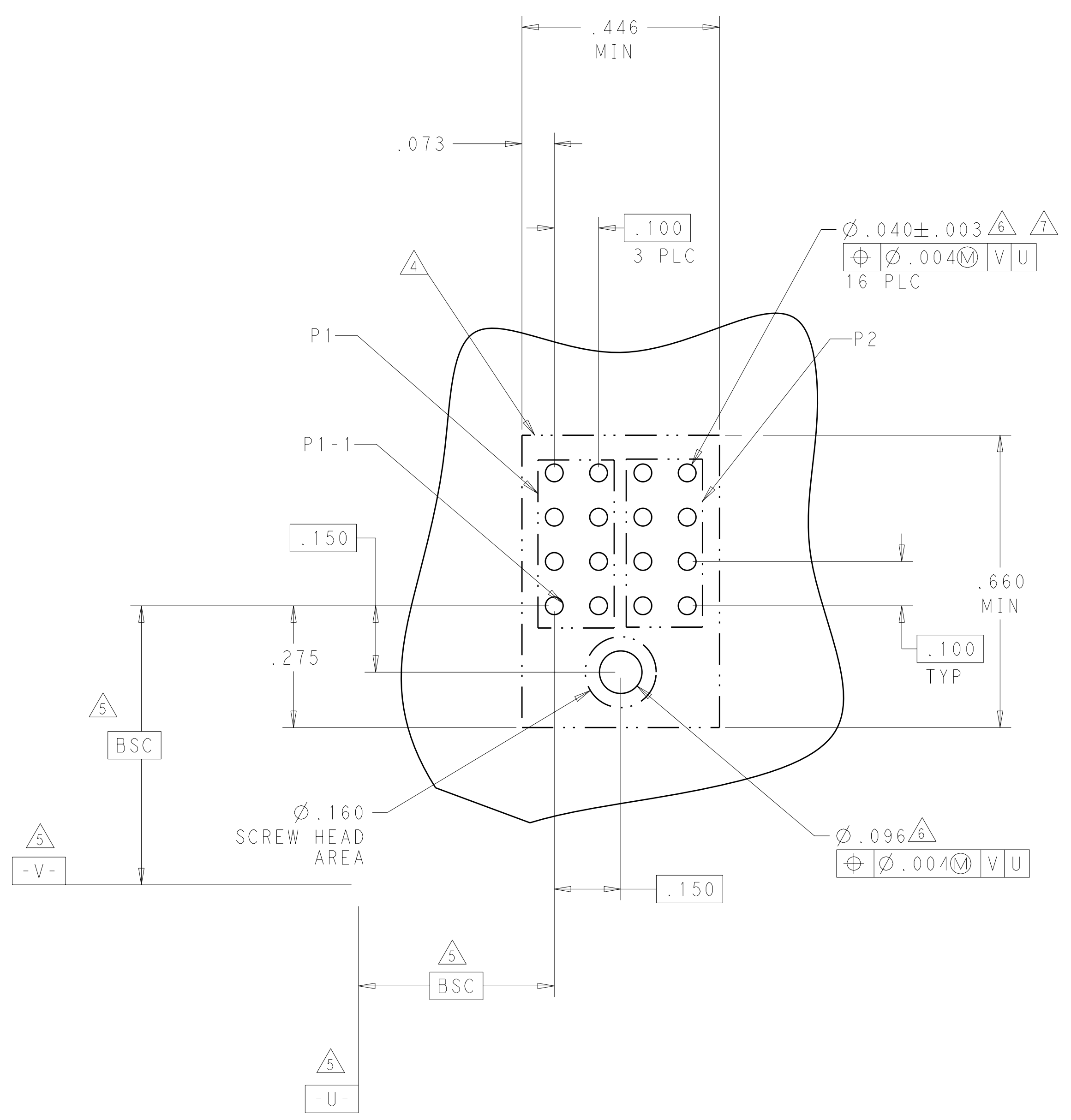
LOC	DIST	REV	DATE	BY	APPD
ES	00				

REVISIONS			
NO	DESCRIPTION	DATE	BY
1	SEE SHEET 1		

SUPERSEDED BY 1892714-2

PART NUMBER	POWER	
	P1	P2
1892714-1	CA	CA
2P		

PART NUMBER	POWER	
	P1	P2
1892714-2	CA	CA
2P		

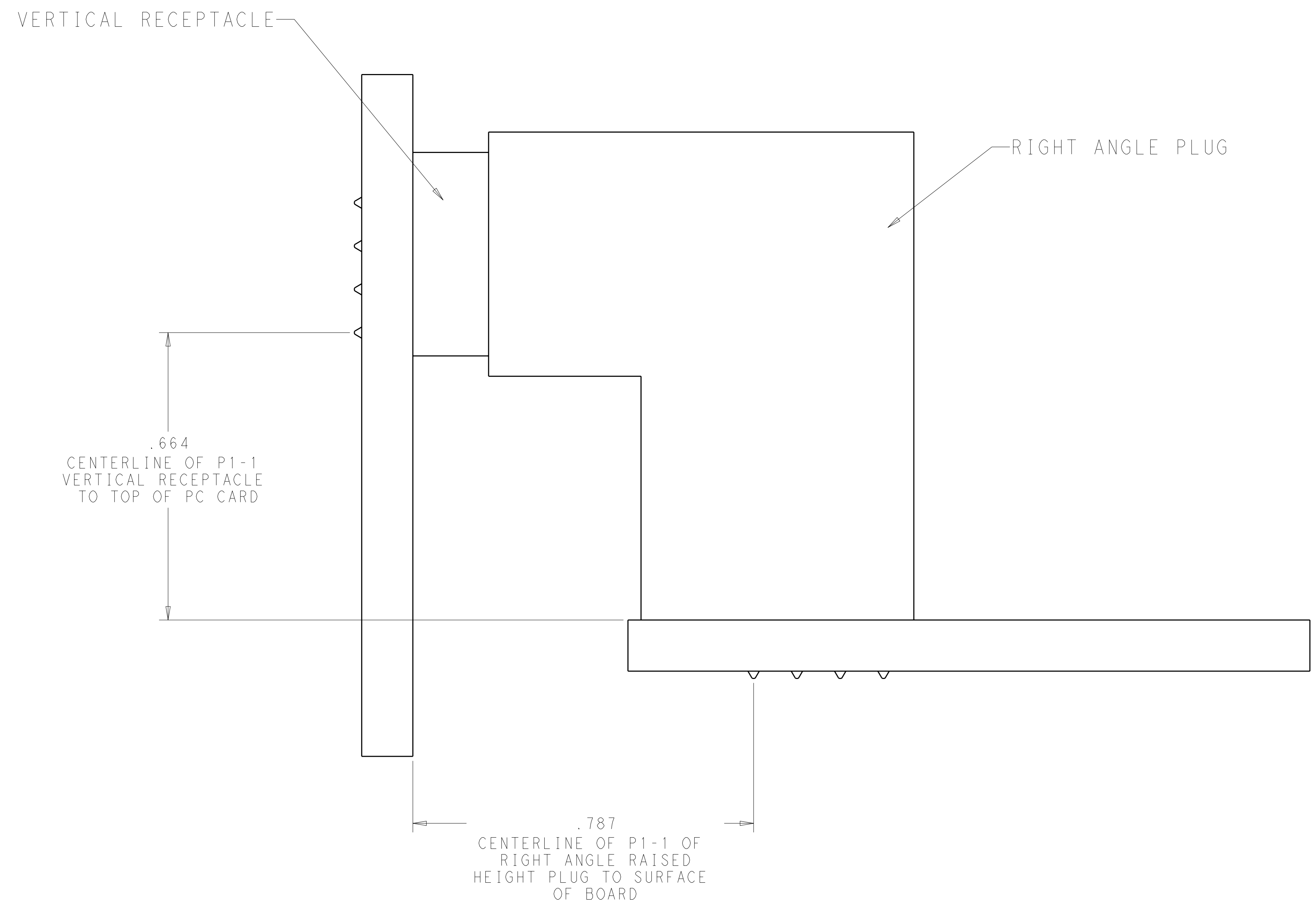


RECOMMENDED 1892714-1 AND 1892714-2 PCB LAYOUT

CA	POWER CONTACT, STD
CODE	DESCRIPTION
	CONTACTS

THIS DRAWING IS A CONTROLLED DOCUMENT.		DWN C. ZHOU CHK S. ZHAO	05MAR2010 05MAR2010	NAME	STE TE Connectivity
DIMENSIONS: INCHES	TOLERANCES UNLESS OTHERWISE SPECIFIED:	APVD	PRODUCT SPEC	RIGHT ANGLE PLUG ASSEMBLY WITH RAISED HEIGHT MULTI-BEAM XLE	
	0 PLC ± 1 PLC ± 2 PLC ± 3 PLC ±.005 4 PLC ±.0020 ANGLES ±.2°	APPLICATION SPEC	SIZE	CAGE CODE	DRAWING NO
MATERIAL	FINISH	WEIGHT	A100779	C=1892714	RESTRICTED TO IBM
		CUSTOMER DRAWING	SCALE	SHEET 2 OF 3	REV B

LOC	DIST	REVISIONS			
P	LTB	DESCRIPTION	DATE	DWN	APVD
ES	00	SEE SHEET 1	-	-	-



**MATING WITH VERTICAL RECEPTACLE (1-6450869-3)
 REFERENCE**

THIS DRAWING IS A CONTROLLED DOCUMENT.		DWN C. ZHOU 05MAR2010	TE Connectivity	
DIMENSIONS: INCHES		CHK S. ZHAO 05MAR2010	NAME	
TOLERANCES UNLESS OTHERWISE SPECIFIED: 3 PLC ± 2 PLC ± 5 PLC ±.005 4 PLC ±.0020 ANGLES ±2° FINISH		APVD	PRODUCT SPEC	
MATERIAL		APVD	APPLICATION SPEC	
CUSTOMER DRAWING		WEIGHT	RESTRICTED TO	
SCALE		SIZE A100779	DRAWING NO. C=1892714	
SHEET 3 OF 3		REV B		IBM

单击下面可查看定价，库存，交付和生命周期等信息

[>>TE Connectivity\(泰科\)](#)