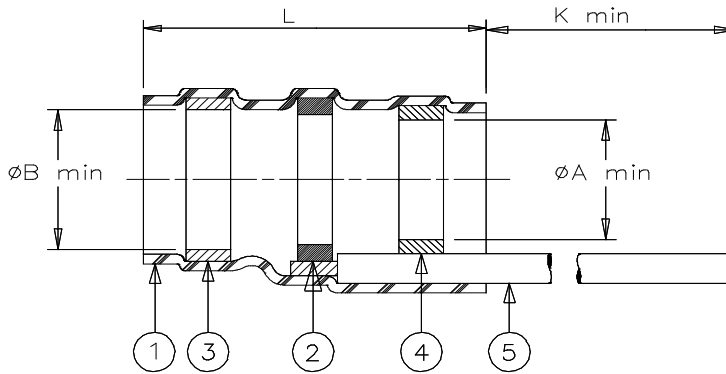


CUSTOMER DRAWING



Product Name	Product Dimensions				Cable Dimensions		
	L max	A min	B min	K min	D max	E min	J±0.5 (J±0.02)
D-142-72	17.25 (0.680)	2.70 (0.105)	3.10 (0.125)	150 (5.900)	2.70 (0.105)	0.9 (0.035)	7 (0.275)
D-142-73	17.25 (0.680)	4.30 (0.170)	5.00 (0.200)	150 (5.900)	4.30 (0.170)	1.9 (0.075)	7 (0.275)
D-142-74	20.5 (0.750)	7.00 (0.275)	7.70 (0.300)	150 (5.900)	7.00 (0.275)	3.56 (0.140)	7 (0.275)

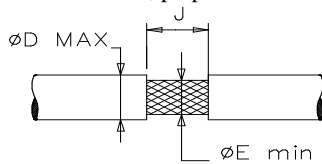
MATERIAL

- INSULATION SLEEVE: Heat-shrinkable, radiation cross-linked modified polyvinylidene fluoride. Transparent blue.
- SOLDER PREFORM WITH FLUX:
SOLDER: TYPE Cd18 per ANSI J-STD-006.
FLUX: TYPE ROL0 per ANSI J-STD-004.
- MELTABLE INSERT: Thermally stabilized thermoplastic. Color: blue.
- MELTABLE INSERT: Thermally stabilized thermoplastic. Color: grey.
- GROUND LEAD: RAYCHEM 55A081-221 in accordance with MIL-W-22759/34-22 AWG 22 stranded tin plated copper. Color: white.


APPLICATION

- These parts are designed to provide an environment protected shield termination on cables, rated for 105°C minimum. Meeting the dimensional criteria listed, having tin or silver plated shields.
- Temperature range: -55°C to +125°C.
- Install using TE Connectivity-approved convection or infrared heating tools in accordance with Raychem process standard RCPS-100-70.

For best results, prepare the cable as shown:



TE Connectivity, TE connectivity (logo), Raychem, Thermofit, and SolderSleeve are trademarks

		Raychem THERMOFIT DEVICES	TITLE: SOLDERSLEEVE DEVICE WITH PRE-INSTALLED LEAD LOW TEMPERATURE			
UNLESS OTHERWISE SPECIFIED DIMENSIONS ARE IN MILLIMETERS. INCHES DIMENSIONS ARE BETWEEN BRACKETS.			DOCUMENT NO D-142-7X			
TOLERANCES: 0.00 N/A 0.0 N/A 0 N/A	ANGLES: N/A ROUGHNESS IN MICRON	TE Connectivity reserves the right to amend this drawing at any time. Users should evaluate the suitability of the product for their application.	Revision: 5		Issue Date: March 2020	
DRAWN BY: R. MAPALO	DATE: 06/15/98	ECO: ECO-20-003573	SCALE:. NONE	SIZE: A	SHEET: 1 of 1	

Print Date: 18-Mar-20 If this document is printed it becomes uncontrolled. Check for the latest revision.

单击下面可查看定价，库存，交付和生命周期等信息

[>>TE Connectivity\(泰科\)](#)