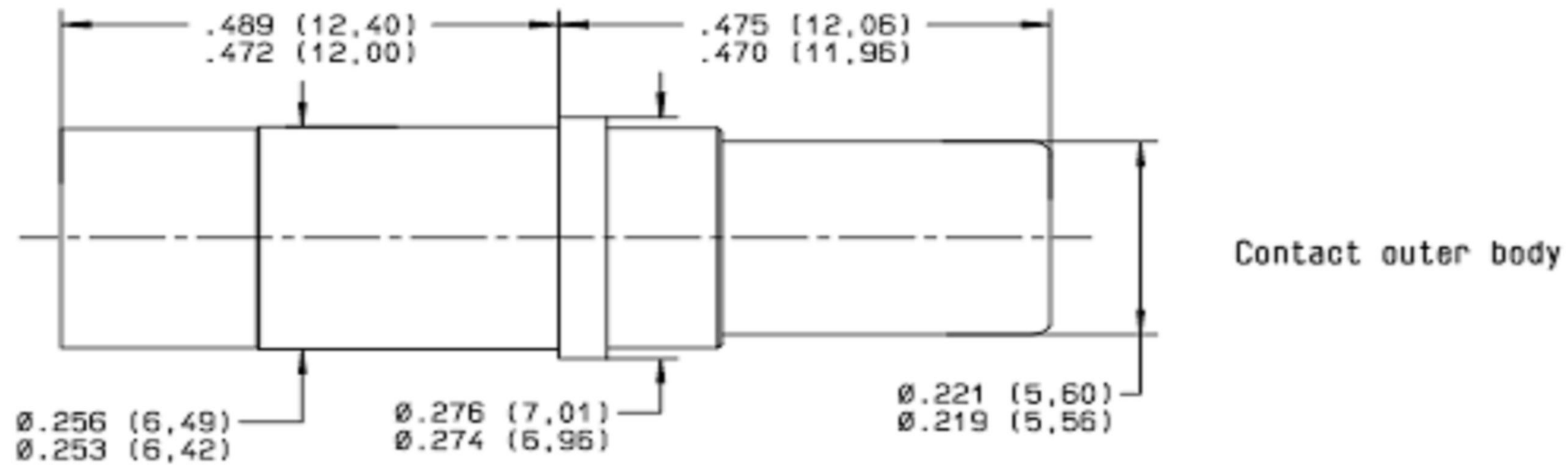
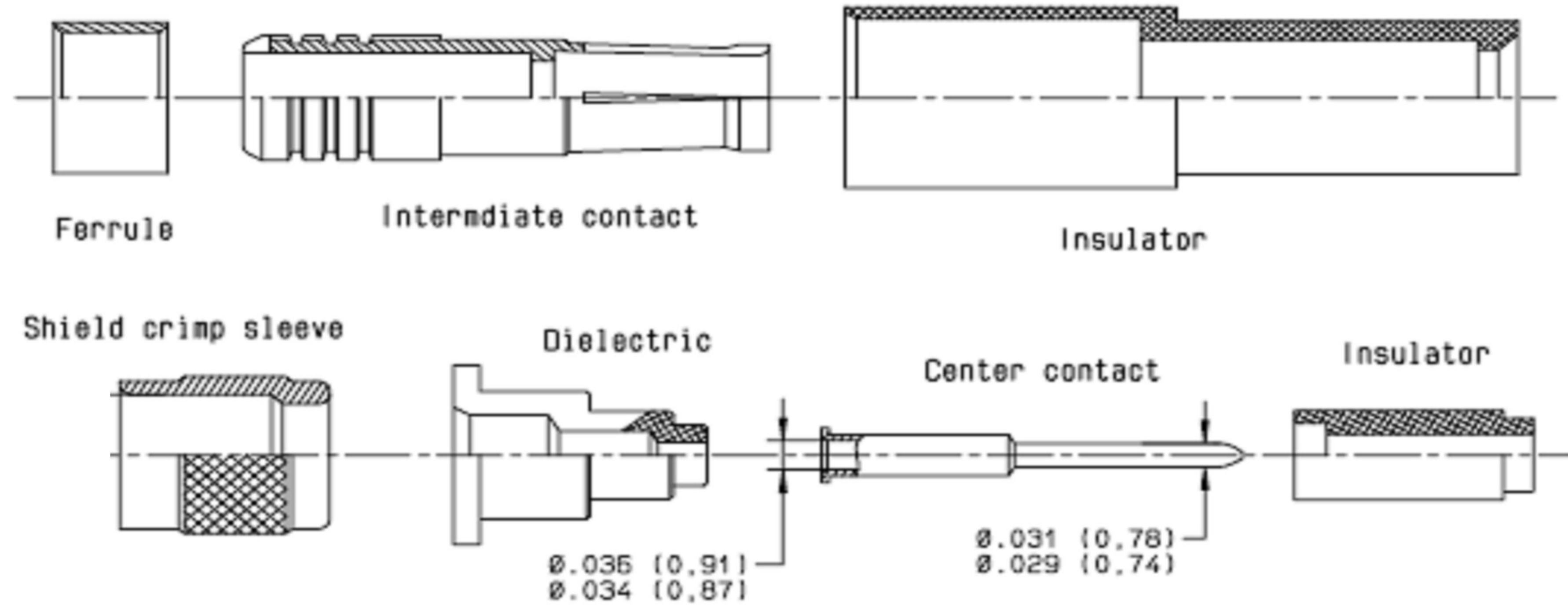


LOC	DIST	REVISIONS			
P	LTR	DESCRIPTION	DATE	DWN	APVD
3		REV PER ECO 10-010036	5-18-10	CT	KH



Contact outer body



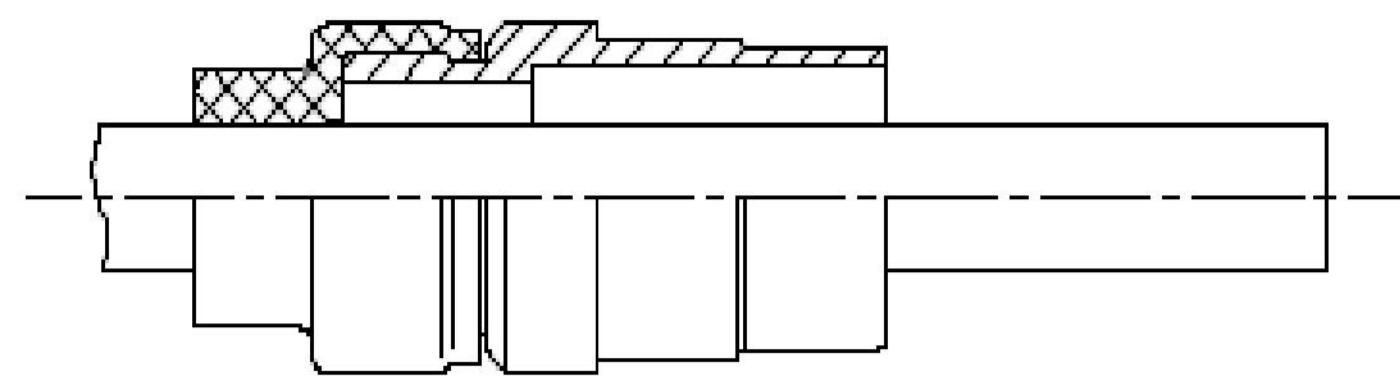
1. MATERIAL:
 - OUTER BODY CONTACT AND INTERMEDIATE CONTACT: BERYLLIUM COPPER 1/2 HARDNESS IN KNOOP 140 MAX (126 HV) FOR CRIMP BARREL.
 - FERRULE AND SHIELD CRIMP SLEEVE: COPPER ALLOY.
 - CENTER CONTACT: C97.
 - DIELECTRIC AND INSULATORS: PTFE.
2. FINISH:
 - ALL METALLIC PARTS: GOLD PER MIL-G-45204 TYPE I OR II GRADE C OR D CLASS 1, 50 MICROINCHES OVER NICKEL PLATE PER QQ-N-290.
3. CRIMPING TOOLS: (CRIMPED CONTACTS WILL SHOW NO CRACK WHEN INSPECTED, PER MIL-C-22520, AT 10x)
 - CENTER CONTACT:
 BASIC TOOL: M22520/2-01 (REF TE P/N 601966-1)
 SELECTOR SET 3
 POSITIONER (REF TE P/N 1738338-1)
 - INTERMEDIATE AND OUTER BODY CONTACTS:
 BASIC TOOL: M22520/5-01 (REF TE P/N 608650-1)
 DIE: M22520/5-05 (REF TE P/N 1738336-1)
 DIE CLOSURE: B FOR INTERMEDIATE CONTACT.
 A FOR OUTER BODY CONTACT.
4. EXTRACTION TOOL: M81969/28-01 (REF TE P/N 91074-1)
5. APPLICABLE CABLES: PAN 6421, M17/176-0002, RAYCHEM 10613
6. APPLICABLE CABLE: RAYCHEM 10614
7. THIS PRODUCT IS SOLD BY TYCO ELECTRONICS UNDER A LICENSE FROM RADIALL SA.

6	1738033-2
5	1738033-1
REMARKS	PART NUMBER

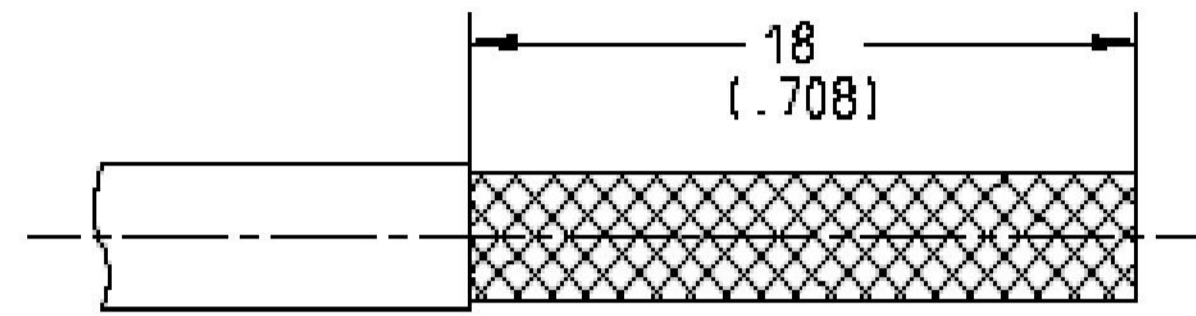
<small>THIS DRAWING IS UNPUBLISHED. RELEASED FOR PUBLICATION. ALL RIGHTS RESERVED. THIS DRAWING IS CONTROLLED PROPERTY OF TYCO ELECTRONICS CORPORATION. IT IS TO BE KEPT IN CONFIDENTIALITY AND NOT TO BE REPRODUCED OR TRANSMITTED IN ANY FORM OR BY ANY MEANS, ELECTRONIC OR MECHANICAL, INCLUDING PHOTOCOPYING, RECORDING, OR BY ANY INFORMATION STORAGE AND RETRIEVAL SYSTEM, WITHOUT THE WRITTEN PERMISSION OF TYCO ELECTRONICS CORPORATION.</small>		DWN: R FLAIG 01FEB2010 CHK: J MOSIER 01FEB2010 APVD: J MOSIER 01FEB2010	Tyco Electronics Corporation Harrisburg, PA 17105-3608
DIMENSIONS: INCHES(mm) TOLERANCES UNLESS OTHERWISE SPECIFIED: 0 PLC ± 1 PLC ± 2 PLC ± 3 PLC ± 4 PLC ± ANGLES ± FINISH ±	NAME: CONTACT, PIN, CONCENTRIC TWINAX APPLICATION SPEC: - PRODUCT SPEC: -	SIZE: A CAGE CODE: 100779 DRAWING NO: 1738033	RESTRICTED TO: - WEIGHT: - SCALE: N/A SHEET: 1 OF 4 REV: 3
MATERIAL:		CUSTOMER DRAWING	

ASSEMBLY INSTRUCTIONS

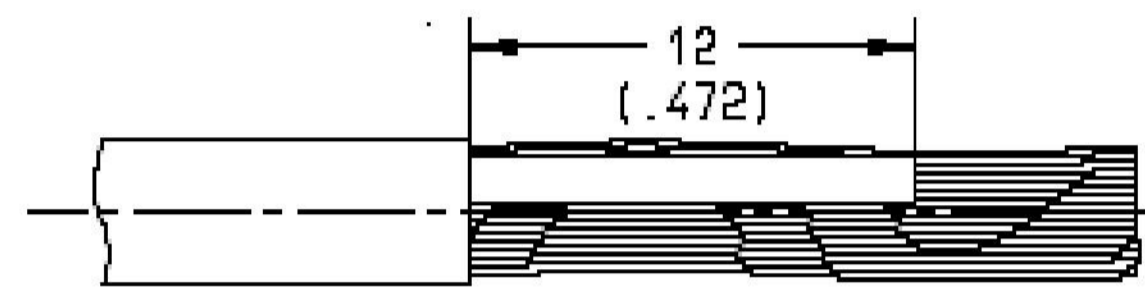
LOC	DIST	REVISIONS			
P	LYR	DESCRIPTION	DATE	DWN	APVD
DF	A5	SEE SHEET 1			



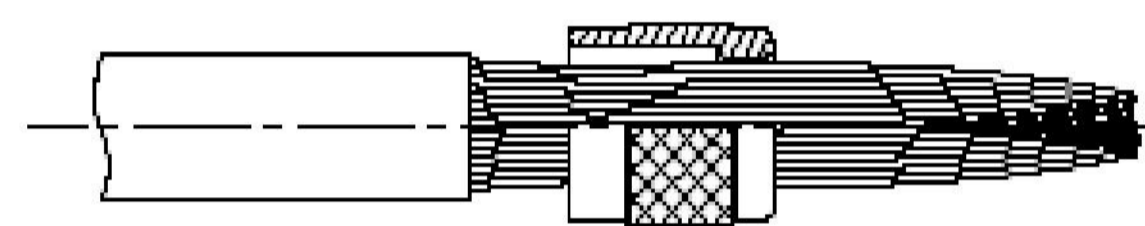
FOR ENVIRONMENTAL CONTACT, SLIDE THE ENVIRONMENTAL SLEEVE OVER THE CABLE BEFORE STRIPPING



STRIP THE CABLE AS ILLUSTRATED

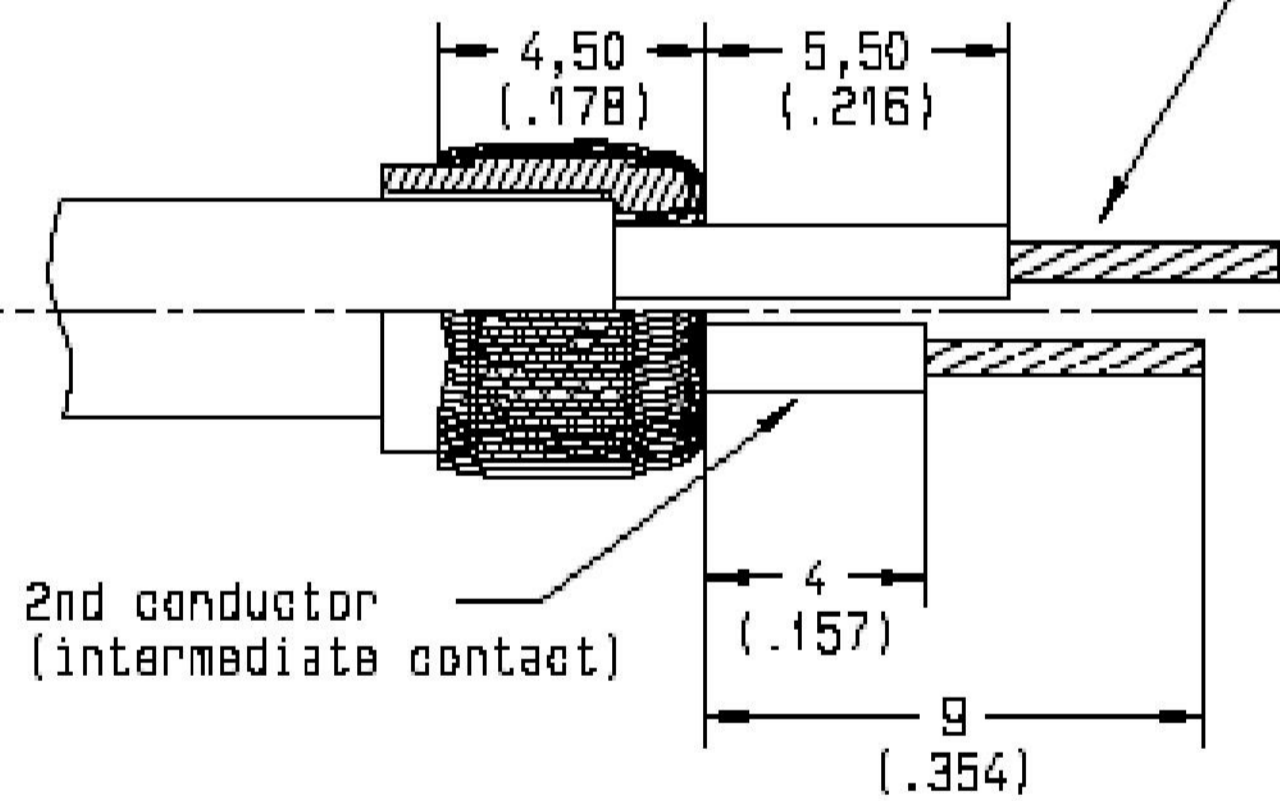


COMB BRAIDS AND CUT THE HIGH IMMUNITY RIBBON. CUT THE TWO CONDUCTORS TO LENGTH INDICATED

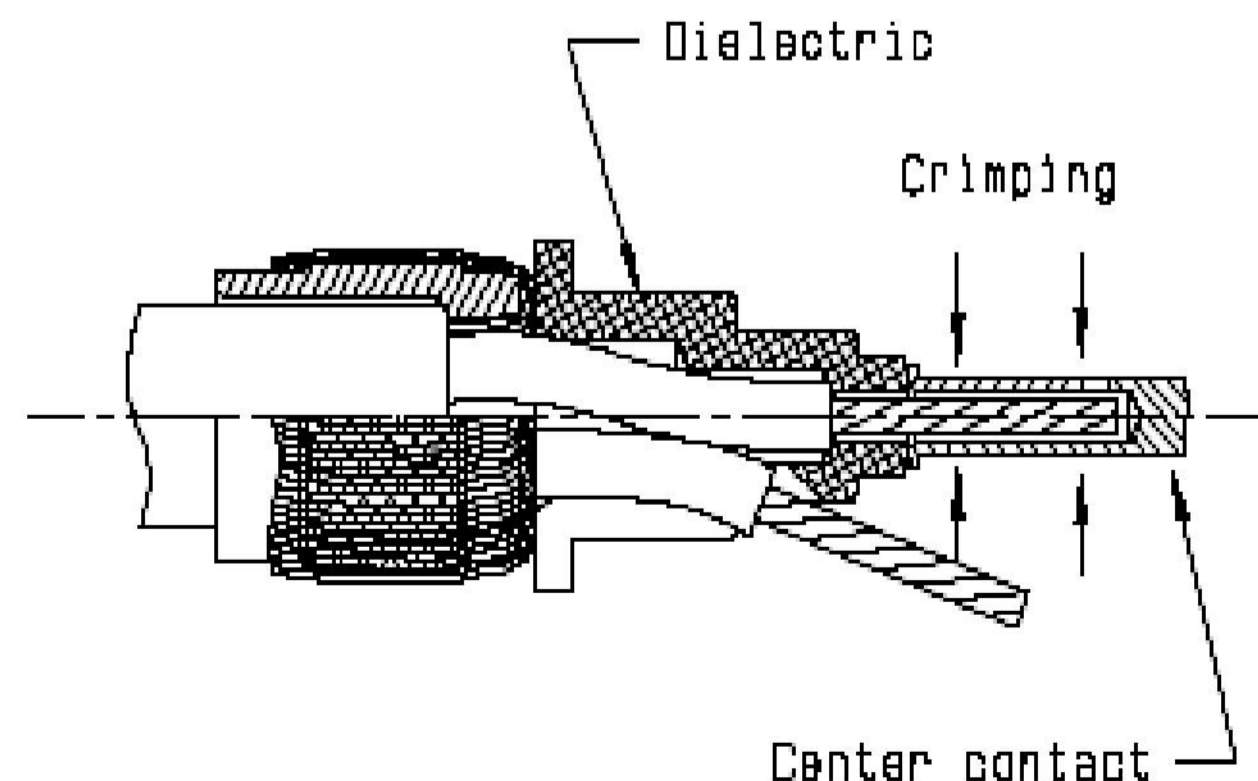


SLIDE SHIELD CRIMP SLEEVE OVER THE BRAID AGAINST THE SHEATH CUT END. FIRST, TWIST THE BRAID END TO FACILITATE THE SLIDING OF THE SHIELD CRIMP SLEEVE

1st conductor: blue (center contact)



FOLD BACK THE BRAID OVER THE SHIED CRIMP SLEEVE CUT THE BRAID AND TWO CONDUCTORS AS SHOWN. CUT THE ROD FILLERS



A: SLIDE THE DIELECTRIC ON THE FIRST CONDUCTOR. THE SECOND CONDUCTOR COMING IN THE SLOT.

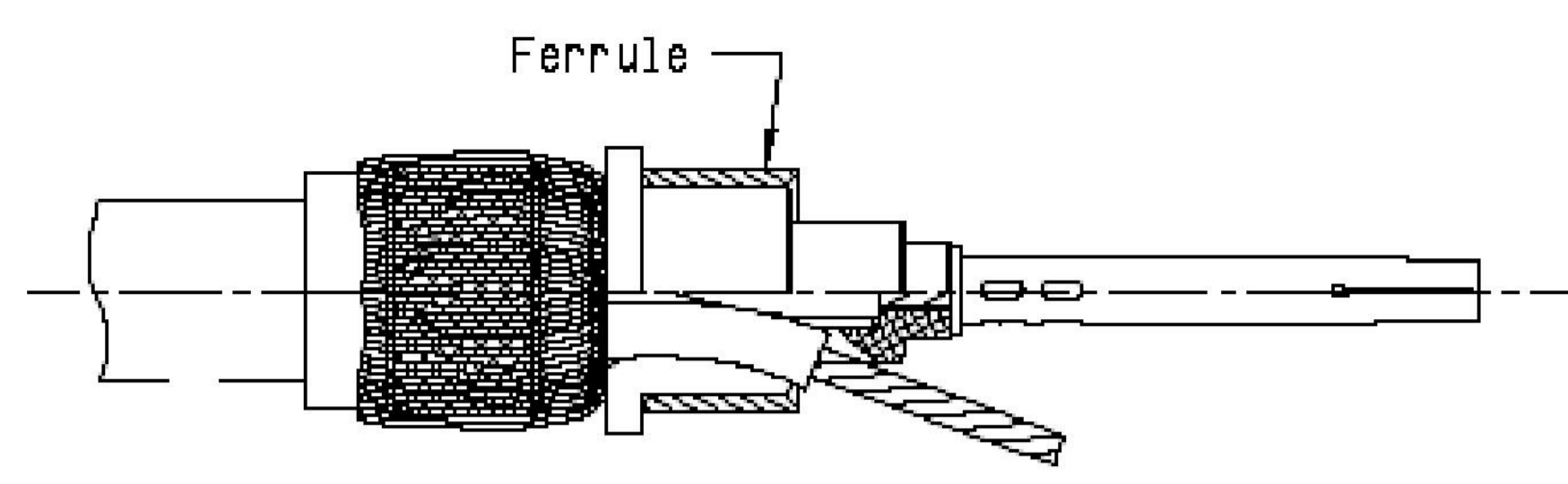
B: SLIDE THE CENTER CONTACT ON THE FIRST CONDUCTOR UNTIL IT BUTTS AGAINST THE BRAID. THE CABLE CONDUCTOR MUST BE VISIBLE THROUGH THE INSPECTION HOLE.

C: CRIMP THE CENTER CONTACT:
 - CRIMPING TOOL M22520/2.01 (REF TE P/N 601966-1), SELECTOR 3
 - POSITIONER (REF TE P/N 1738338-1).

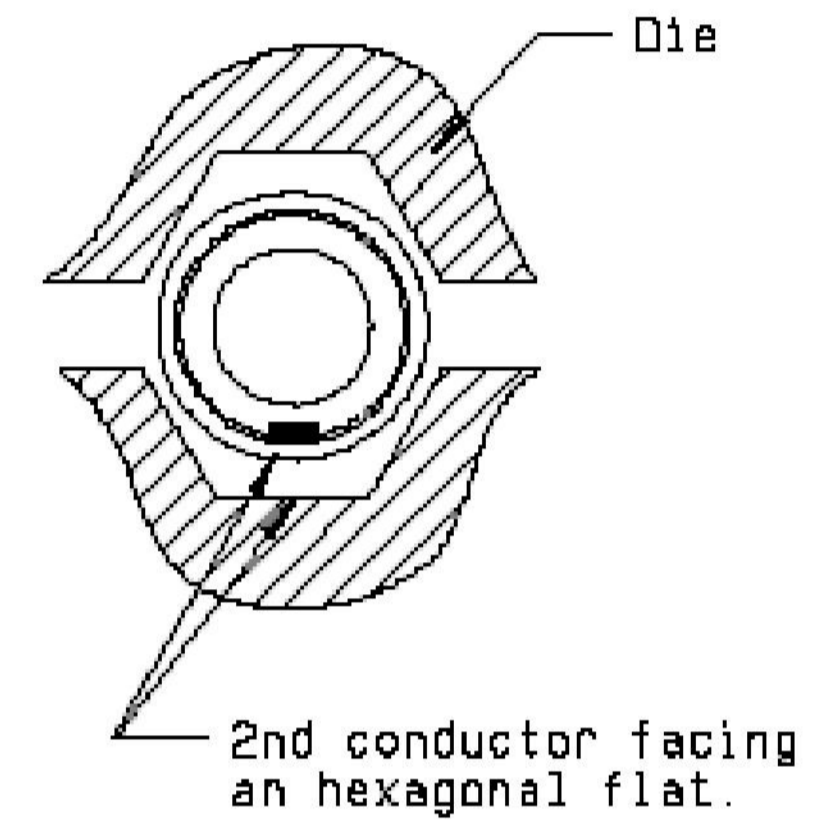
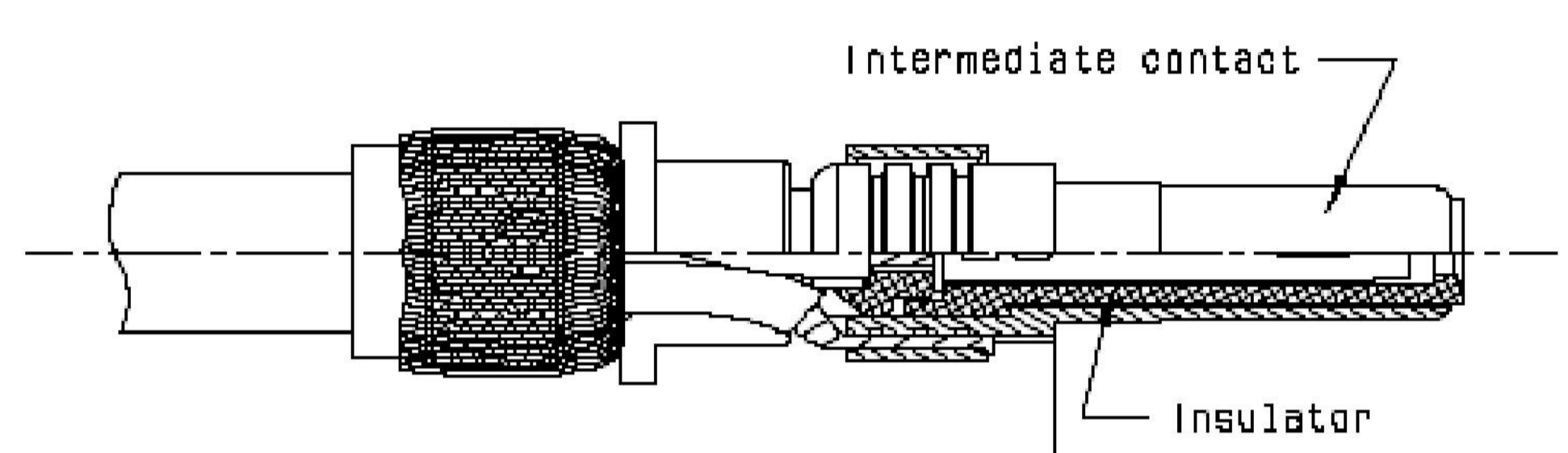
<small>THIS DRAWING IS UNPUBLISHED. RELEASED FOR PUBLICATION 20 © COPYRIGHT 2002 BY TYCO ELECTRONICS CORPORATION. ALL INTERNATIONAL RIGHTS RESERVED.</small>		DWN R FLAIG 01FEB2010 CHK J MOSIER 01FEB2010 APVD J MOSIER 01FEB2010	Tyco Electronics Corporation Harrisburg, PA 17105-3608
DIMENSIONS: [INCHES(mm)]	TOLERANCES UNLESS OTHERWISE SPECIFIED: 0 PLC ± 1 PLC ± 2 PLC ± 3 PLC ± 4 PLC ± ANGLES ± FINISH ±	NAME CONTACT, PIN, CONCENTRIC TWINAX SIZE A1 CAGE CODE 00779 DRAWING NO C=1738033	RESTRICTED TO SCALE N/A SHEET 2 OF 4 REV 3
MATERIAL:		WEIGHT:	CUSTOMER DRAWING

LOC	DIST	REV	DESCRIPTION	DATE	DWN	APVD
-	-	-	SEE SHEET 1	-	-	-

ASSEMBLY INSTRUCTIONS (CONT'D)

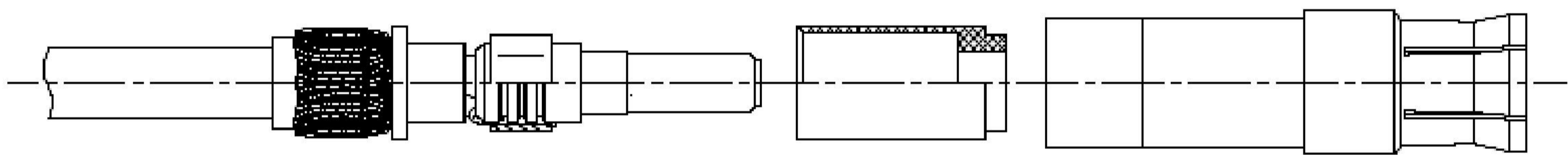


SLIDE THE FERRULE OVER THE DIELECTRIC UNTIL IT BUTTS AGAINST THE SHOULDER

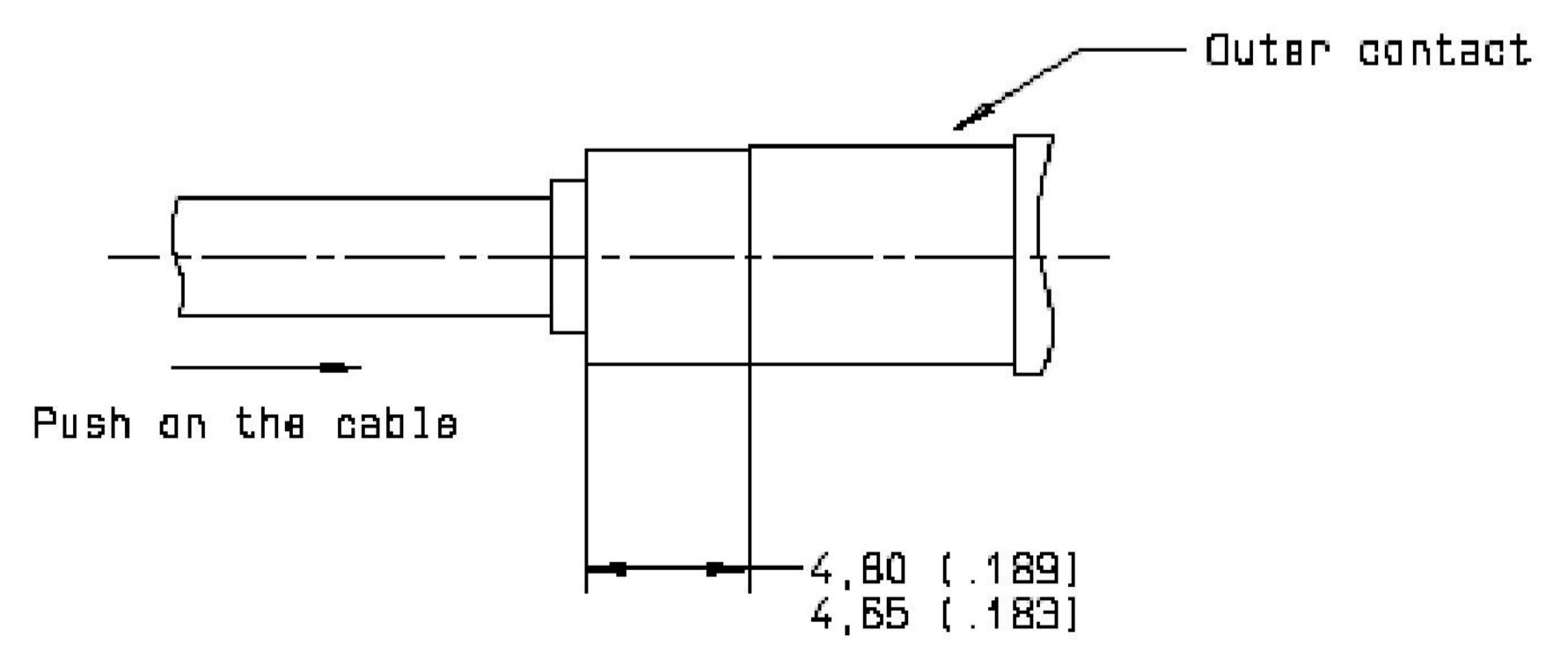


The ferrule and the 2nd conductor must not be more than flush the contact shoulder.

- A: SLIDE THE INTERMEDIATE INSULATOR OVER THE CRIMPED CENTER CONTACT. THEN, INTRODUCE THIS SUB-ASSEMBLY INTO THE INTERMEDIATE CONTACT
- B: PUT THE SECOND CONDUCTOR IN THE BARREL SLOT, SLIDE BACK THE FERRULE OVER THE INTERMEDIATE CONTACT BARREL (AS SHOWN)
- C: CRIMP THE FERRULE:
 - CRIMPING TOOL M22520/5.01 (REF TE P/N 608650-1)
 - DIE M22520/5.05 (REF TE P/N 1738336-1), HEX B (4.5 MM) .178 ON FLATS)
 BE SURE THE SECOND CONDUCTOR IS FACING AN HEXAGONAL FLAT BEFORE CRIMP



INTRODUCE THE INTERMEDIATE CONTACT INTO THE INTERMEDIATE INSULATOR, THEN INTO THE CONTACT OUTER BODY



- CRIMP THE OUTER CONTACT:
 - CRIMPING TOOL M22520/5.01 (REF TE P/N 608650-1)
 - DIE M22520/5.05 (REF TE P/N 1738336-1), HEX A (5.4 MM) .213 ON FLATS)
 PRESS LIGHTLY THE OUTER CONTACT BETWEEN DIES, IN THE INDICATED CRIMPING AREA (AS SHOWN) AND PUSH ON THE CABLE TO PUT ALL COMPONENTS IN A GOOD POSITION. THEN CLOSE THE DIES COMPLETELY.

FOR ENVIRONMENTAL CONTACT, BRING BACK THE ENVIRONMENTAL SLEEVE ON THE CONTACT OUTER BODY

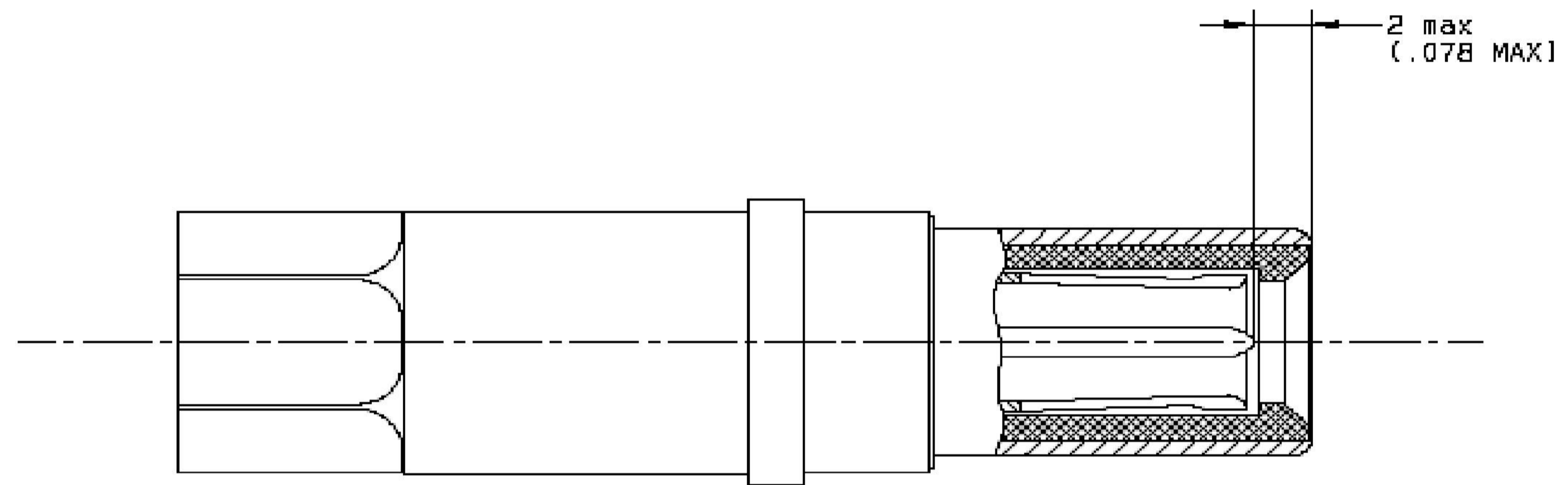
DIMENSIONS:		TOLERANCES UNLESS OTHERWISE SPECIFIED:		APVD		NAME	
INCHES(mm)		0 PLC	±	J MOSIER	01FEB2010	CONTACT, PIN, CONCENTRIC TWINAX	
		1 PLC	±	J MOSIER	01FEB2010	-	
		2 PLC	±	PRODUCT SPEC		-	
		3 PLC	±	APPLICATION SPEC		-	
		4 PLC	±	-		-	
		ANGLES	±	-		-	
		FINISH	±	-		-	
MATERIAL		-		WEIGHT		-	
-		-		CUSTOMER DRAWING		-	
-		-		SCALE		N/A	
-		-		SHEET		3 OF 4	
-		-		REV		3	

THIS DRAWING IS UNPUBLISHED. RELEASED FOR PUBLICATION 20
 © COPYRIGHT 2002 BY TYCO ELECTRONICS CORPORATION. ALL INTERNATIONAL RIGHTS RESERVED.

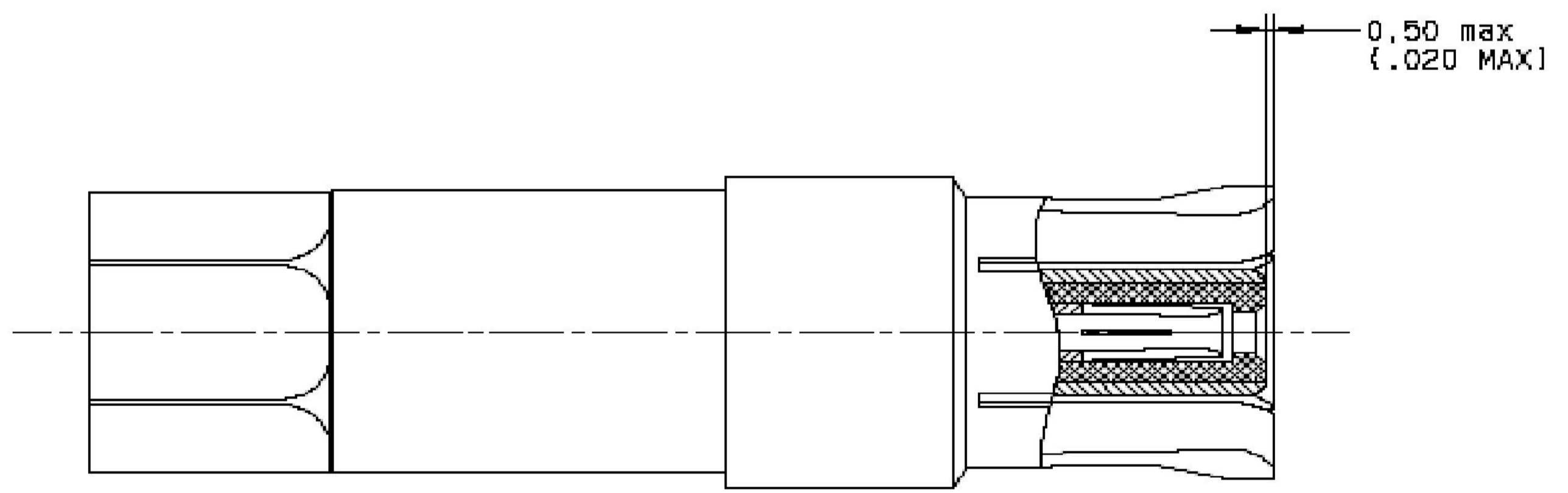
LOC		DIST		REVISIONS			
P	LYR	DESCRIPTION	DATE	DWN	APVD		
-	-	SEE SHEET 1	-	-	-		

- INSPECTION DIMENSIONS AFTER ASSEMBLY -

PIN TWINAX CONTACT:



SOCKET TWINAX CONTACT:



<small>THIS DRAWING IS UNPUBLISHED. RELEASED FOR PUBLICATION 20 © COPYRIGHT 2002 BY TYCO ELECTRONICS CORPORATION. ALL INTERNATIONAL RIGHTS RESERVED.</small>		DWN R FLAIG 01FEB2010 CHK J MOSIER 01FEB2010 APVD J MOSIER 01FEB2010	Tyco Electronics Tyco Electronics Corporation Harrisburg, PA 17105-3608
DIMENSIONS: INCHES(mm)	TOLERANCES UNLESS OTHERWISE SPECIFIED: 0 PLC ±. 1 PLC ±. 2 PLC ±. 3 PLC ±. 4 PLC ±. ANGLES ±. FINISH ±.	NAME CONTACT, PIN, CONCENTRIC TWINAX PRODUCT SPEC APPLICATION SPEC	SIZE A1 CAGE CODE 00779 DRAWING NO C=1738033 RESTRICTED TO
MATERIAL		WEIGHT	SCALE N/A SHEET 4 OF 4 REV 3
CUSTOMER DRAWING			

单击下面可查看定价，库存，交付和生命周期等信息

[>>TE Connectivity\(泰科\)](#)