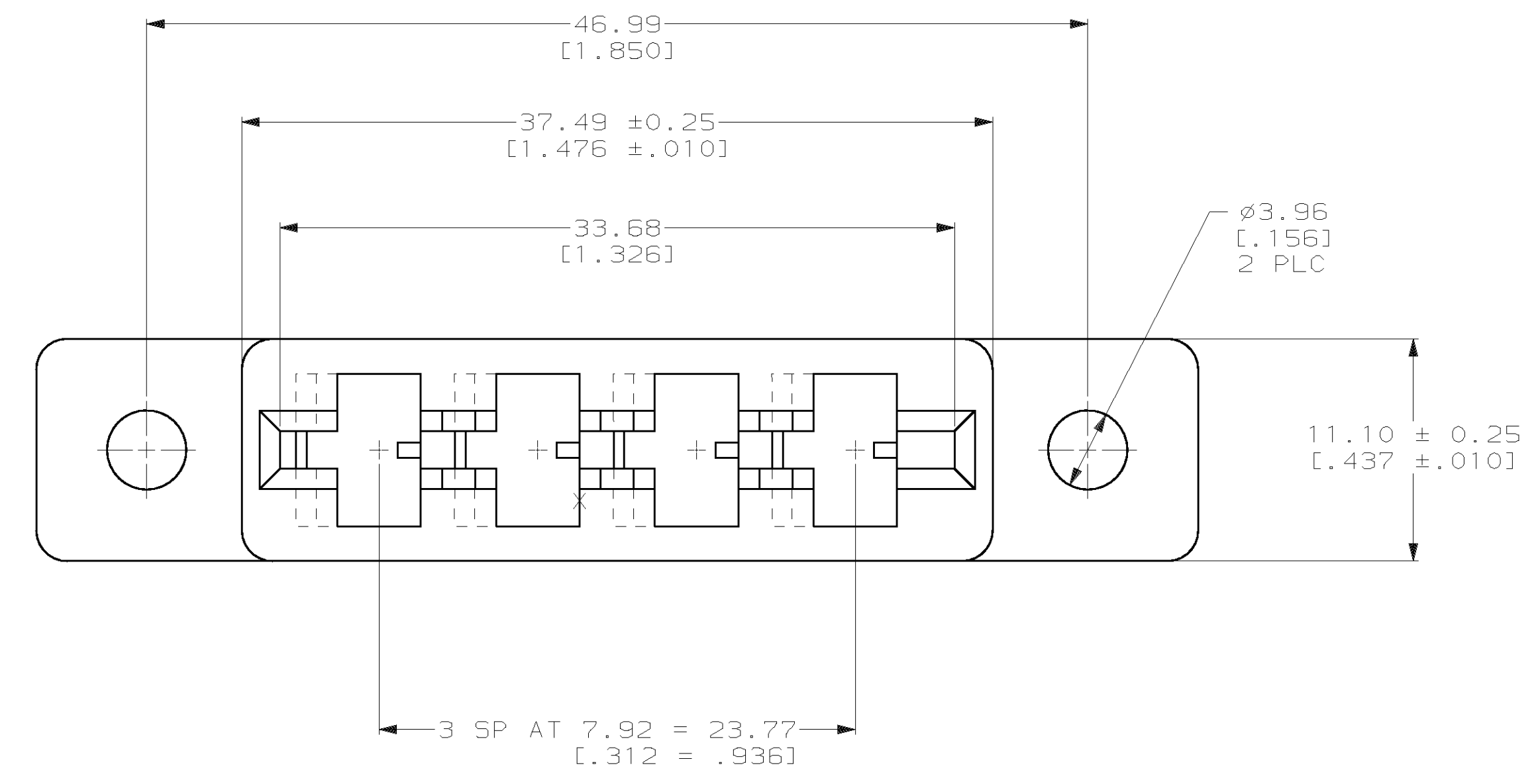
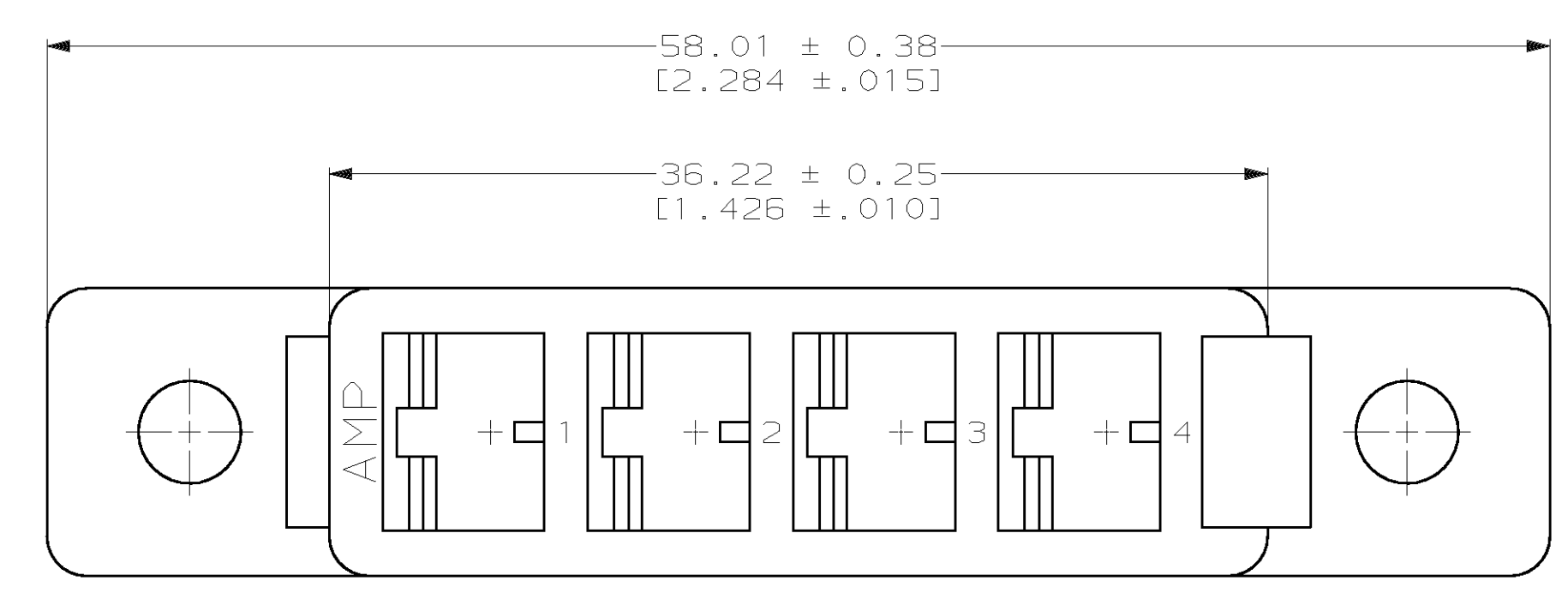
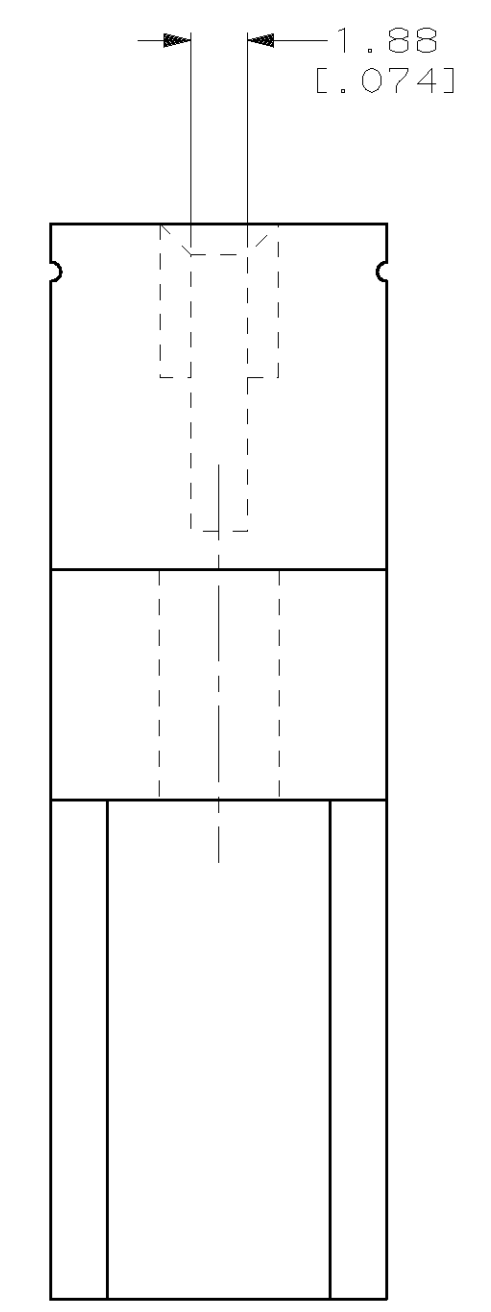
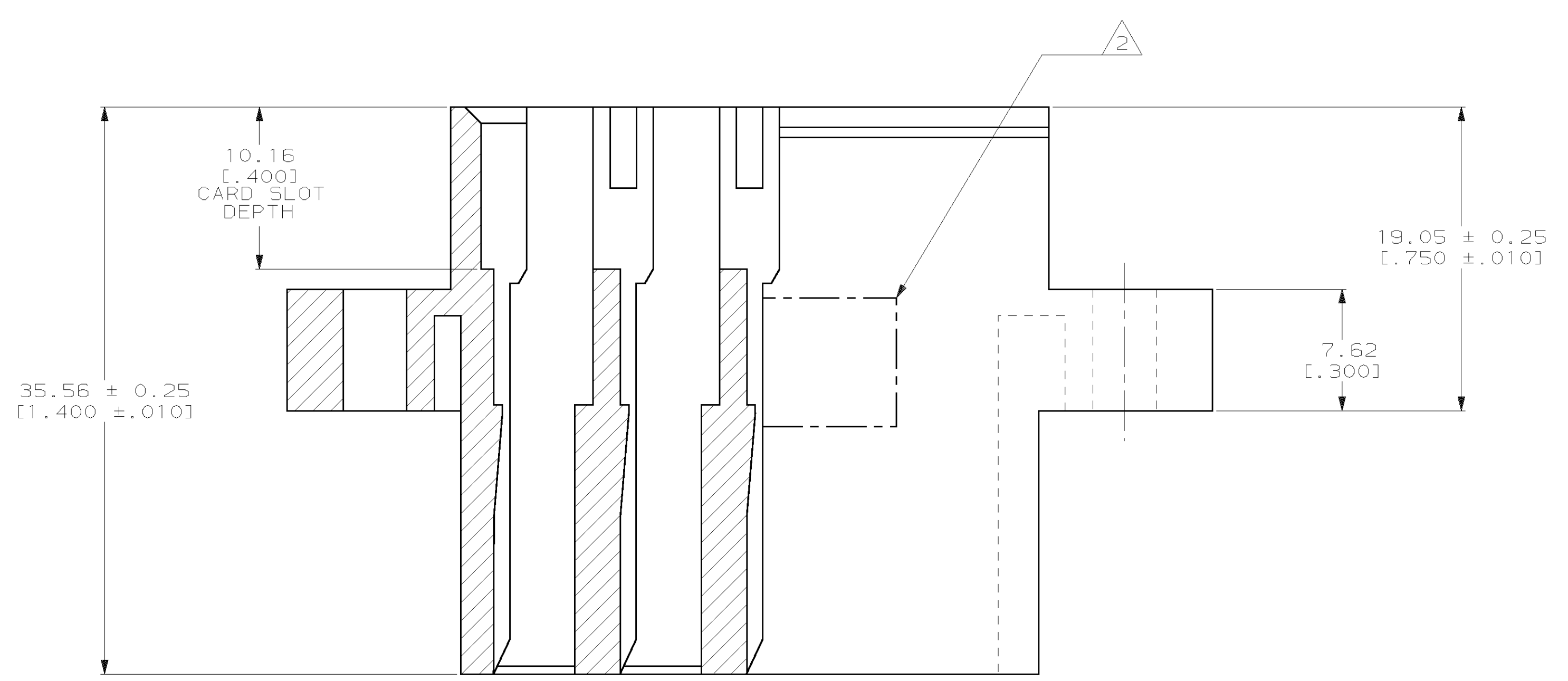


REVISIONS								
LOC	QTY	P	F	ZONE	LTR	DESCRIPTION	DATE	APPD
FT	22					RELEASED PER 95-0158-003-1	3/11/96	HR
						REV PER 0320-264-97	05 AUG 97	NS
						REV PER 0652-0070-99	04 JUN 99	MM



1 MATERIAL: VALOX 420 SE0; COLOR: NATURAL.  
 2 "AMP" PART NO AND DATE CODE IN THIS AREA.



THIS DRAWING IS A CONTROLLED DOCUMENT FOR AMP INCORPORATED. IT IS SUBJECT TO CHANGE AND THE CONTROLLING ENGINEERING ORGANIZATION SHOULD BE CONTACTED FOR THE LATEST REVISION.

DO NOT SCALE PRINT. UNLESS SPECIFIED DIMENSIONS IN mm [INCHES]		DR 3/11/96 P. BENNINGHOVE	4 POSITION			145233-1
TOLERANCES - ON -		CHK 3/11/96 H ROSE	PART NO			
2 PLC DEC ± .		APPD 3/11/96 H ROSE	NAME			AMP AMP Incorporated Harrisburg, PA 17105-3608
3 PLC DEC ± .005		APPD 3/11/96 M THUMMA	HOUSING, HIGH CURRENT, .062THK. BD.			
ANGLES ± -		PRODUCT SPEC	DRAWING NO			C-145233
SEE CALLOUT		APPLICATION SPEC	SIZE	CAGE CODE	DRAWING NO	
FINISH			D	00779	C-145233	
-		WEIGHT	SCALE	4:1	SHEET	1 OF 1

单击下面可查看定价，库存，交付和生命周期等信息

[>>TE Connectivity\(泰科\)](#)