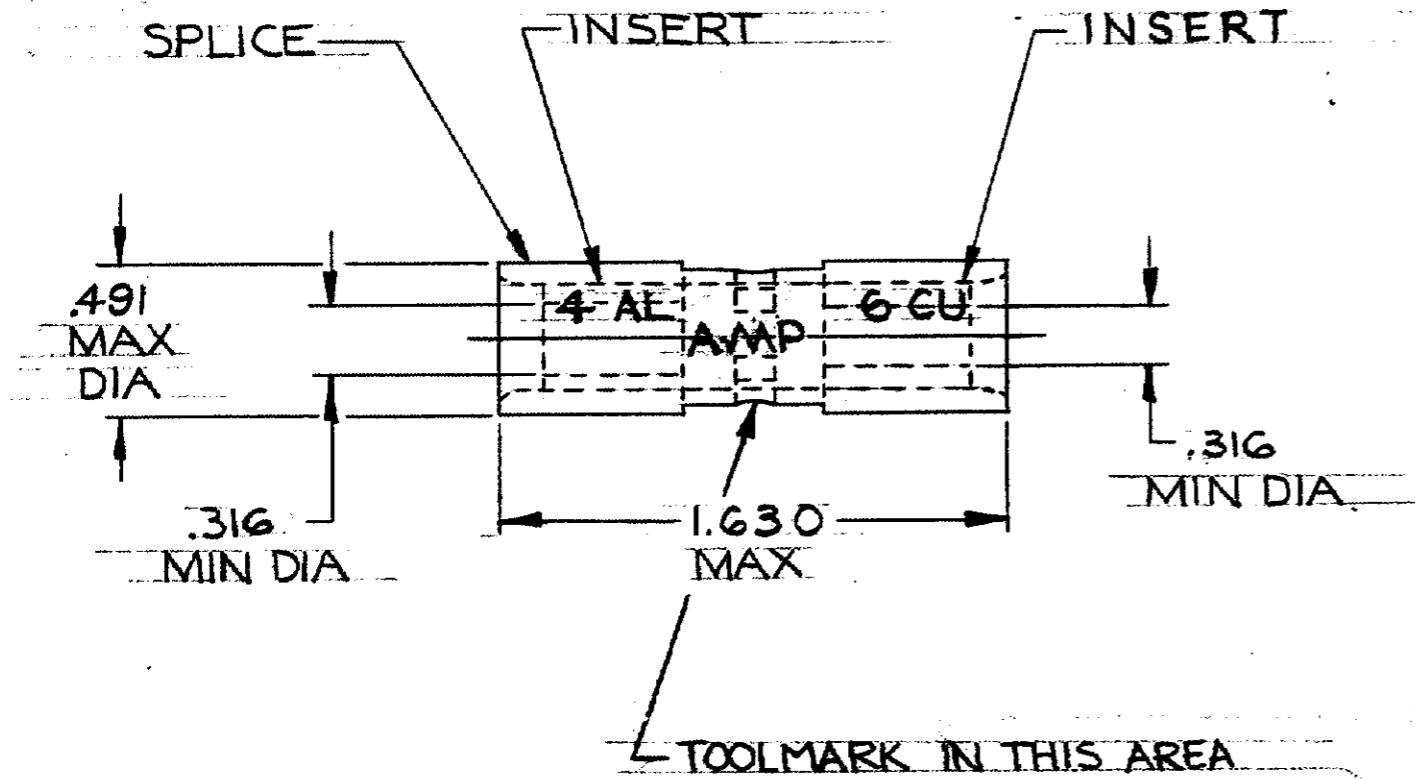


©1968 BY AMP INCORPORATED. ALL RIGHTS RESERVED. AMP PRODUCTS COVERED BY PATENTS AND/OR PATENTS PENDING.

Unpublished copy not to be reproduced without written permission of AMP Inc.

REVISIONS				
ZONE	LTR	DESCRIPTION	DATE	APPROVED
	0	NPS 67-0579 (REV 3)	7-1-68	RHW
	A	REV TITLE PER ECN PC-5545	12-6-68	RHW
	B	REMOVED ENGINEERING CONT. P-6288 REVISED P-6293	4-17-70	FCY
	C	REVISED PER ECN P-6489	9-18-71	FCY
	D	REV PER G-5318	10/25/89	WSV



WIRE SPLICE	51942	INSERT: BRASS (MIL-C-50) TIN PL (MIL-T-10727) .0003 MIN EXT THK
		SPLICE: COPPER (QQ-C576) TIN PL (MIL-T-10727)

QTY	DESCRIPTION	PART NO.	MATERIAL & FINISH
-----	-------------	----------	-------------------

UNLESS OTHERWISE SPECIFIED DIM. ARE IN INCHES. TOLERANCES ON: DECIMALS ± .008 ANGLES ± 5°		CONTRACT NO. #	AMP AMP INCORPORATED HARRISBURG, PENNSYLVANIA
MATERIAL SEE TABLE		DR. <i>R. C. ...</i> 6-27-68 CHK. <i>R. C. ...</i> 7-1-68 APPD. <i>Swabel</i> 7-2-69	
HEAT TREAT #		DSGN APPD	NAME WIRE SPLICE COPALUM-STRANDED/SOLID WIRE SIZE: 4 TO 6
FINISH SEE TABLE		OTHER APPD	SIZE B
LOC <i>G-86</i>		PRINT DATE	CODE IDENT NO. 00779
			NUMBER 51942
			SCALE 2:1
			WT CALC ACTUAL SHEET 1 OF 1

单击下面可查看定价，库存，交付和生命周期等信息

[>>TE Connectivity\(泰科\)](#)