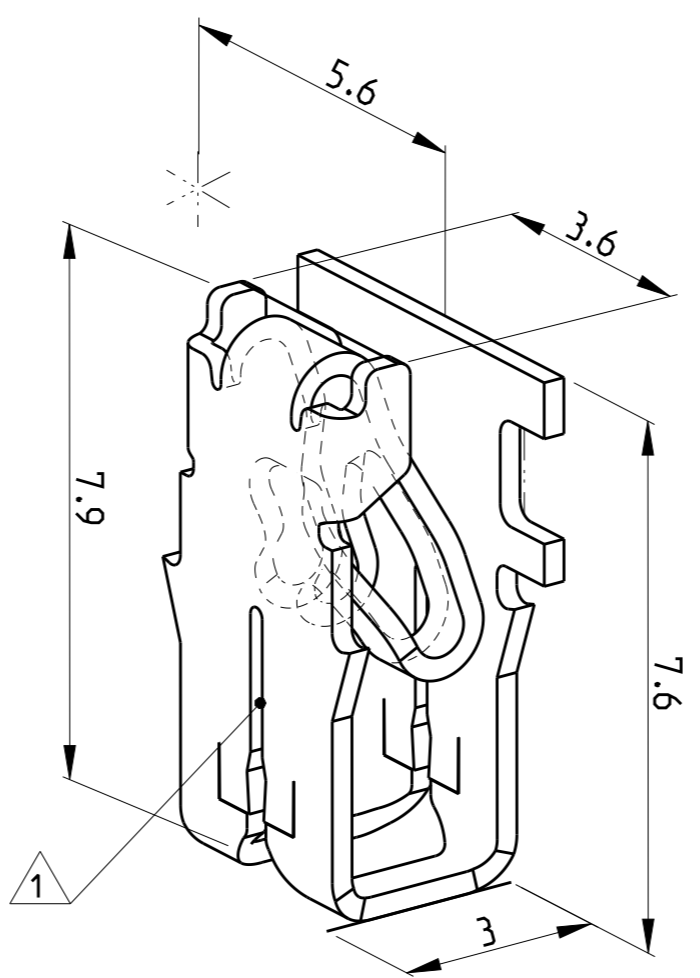
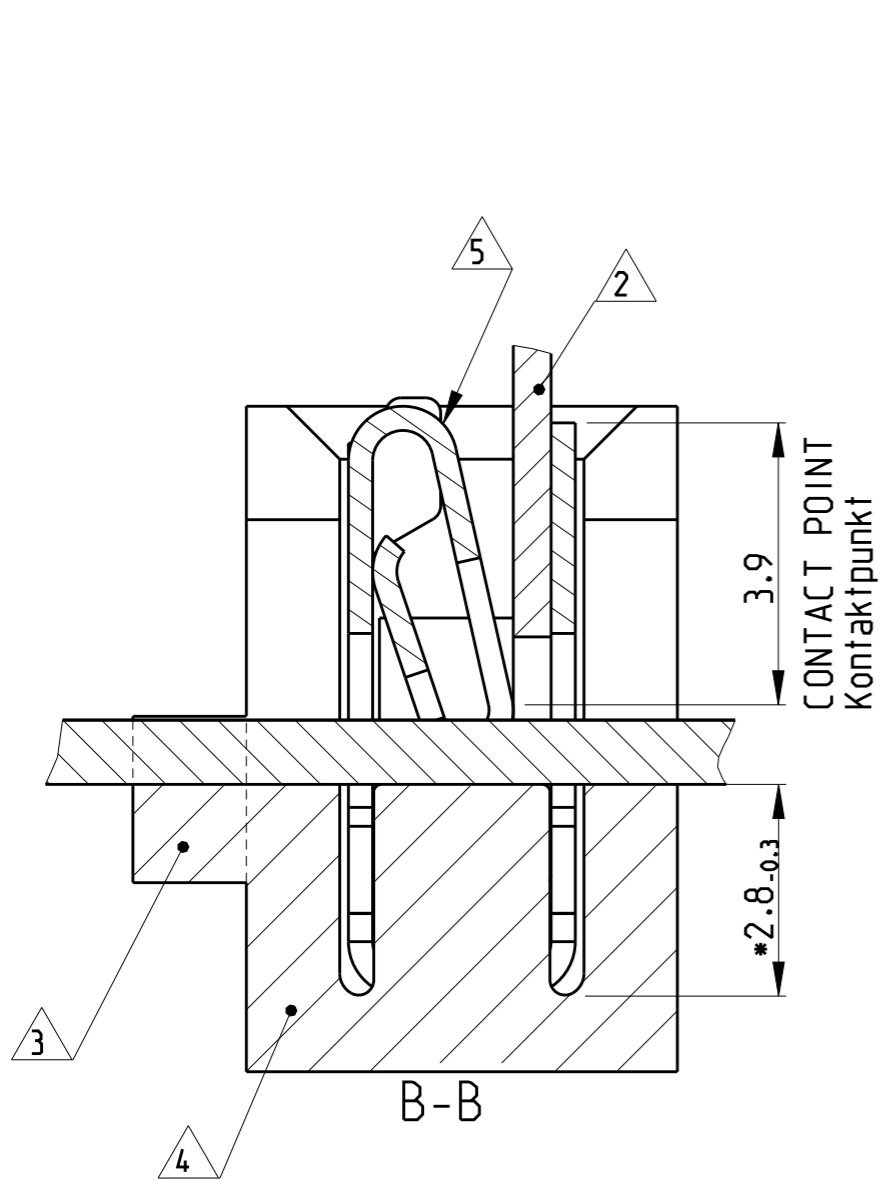
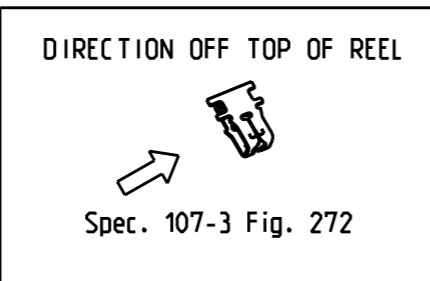


REVISIONS					
P	LTR	DESCRIPTION	DATE	DWN	APVD
E4		NEW PART NO 1394759-6 ADDED	06DEC2017	SV	PKS
E5		1394759-6 RELEASE FOR PRODUCTION	30MAY2018	SV	PKS
F		REVISED PER ECR-19-009725	02JUL2019	BDA	SV
F1		REVISED PER ECR-19-015041	06NOV2019	PC	MB



- 1 SLOT ACCEPTS:
SINGLE OR DOUBLE MAGNET WIRE
0.63...0.85 mm DIA
Kontakt geeignet fuer :
Lackdraht, Einzeldraht und Doppeldraht
Ø0.63...0.85 mm
- 2 POKE IN TAB TERMINAL 3.4x0.5mm
Poke in Flachstecker 3.4x0.5mm
- 3 AREA WILL BE CUT BY TERMINATION
Bereich wird beim Kontaktieren abgetrennt
- 4 CAVITY ACCORDING TO TE SPEC. 411-18512
Kontakt Kammer nach TE Spec. 411-18512
- 5 IDENTIFICATION NO. FOR MAGNET WIRE RANGE (20)
Kennziffer fuer Lackdrahtbereich (20)
- 6 REELED WITH INTERLEAVE PAPER.
ABGEWICKELT MIT INTERLEAVE-PAPIER.

1394759-6	-	CuNiSi	NICKEL PLATED	MAG MATE LEAF TERMINAL	-
1394759-5	-	CuNiSi	TIN PLATED	MAG MATE LEAF TERMINAL	-
1394759-3	-	CuZn	PRE TINNED	MAG MATE LEAF TERMINAL	-
1394759-2	-	CuNiSi	PRE TINNED	MAG MATE LEAF TERMINAL	-
1394759-1	-	CuNiSi	BLANK	MAG MATE LEAF TERMINAL	-
PART NO	PCS.	MATERIAL	SURFACE COLOUR	DESCRIPTION	ITEM NO



THIS DRAWING IS A CONTROLLED DOCUMENT.

DWN H. ATZMANN 04-01-01
 CHK H. Plößer 04-01-01
 APVD -

PRODUCT SPEC 108-2012
 APPLICATION SPEC 114-2046
 WEIGHT -

TE TE Connectivity

NAME MAG MATE LEAF TERMINAL MARK II

SIZE A3 CAGE CODE 00779 DRAWING NO C-1394759 RESTRICTED TO -

CUSTOMER DRAWING SCALE 10:1 SHEET 1 OF 1 REV F1

单击下面可查看定价，库存，交付和生命周期等信息

[>>TE Connectivity\(泰科\)](#)