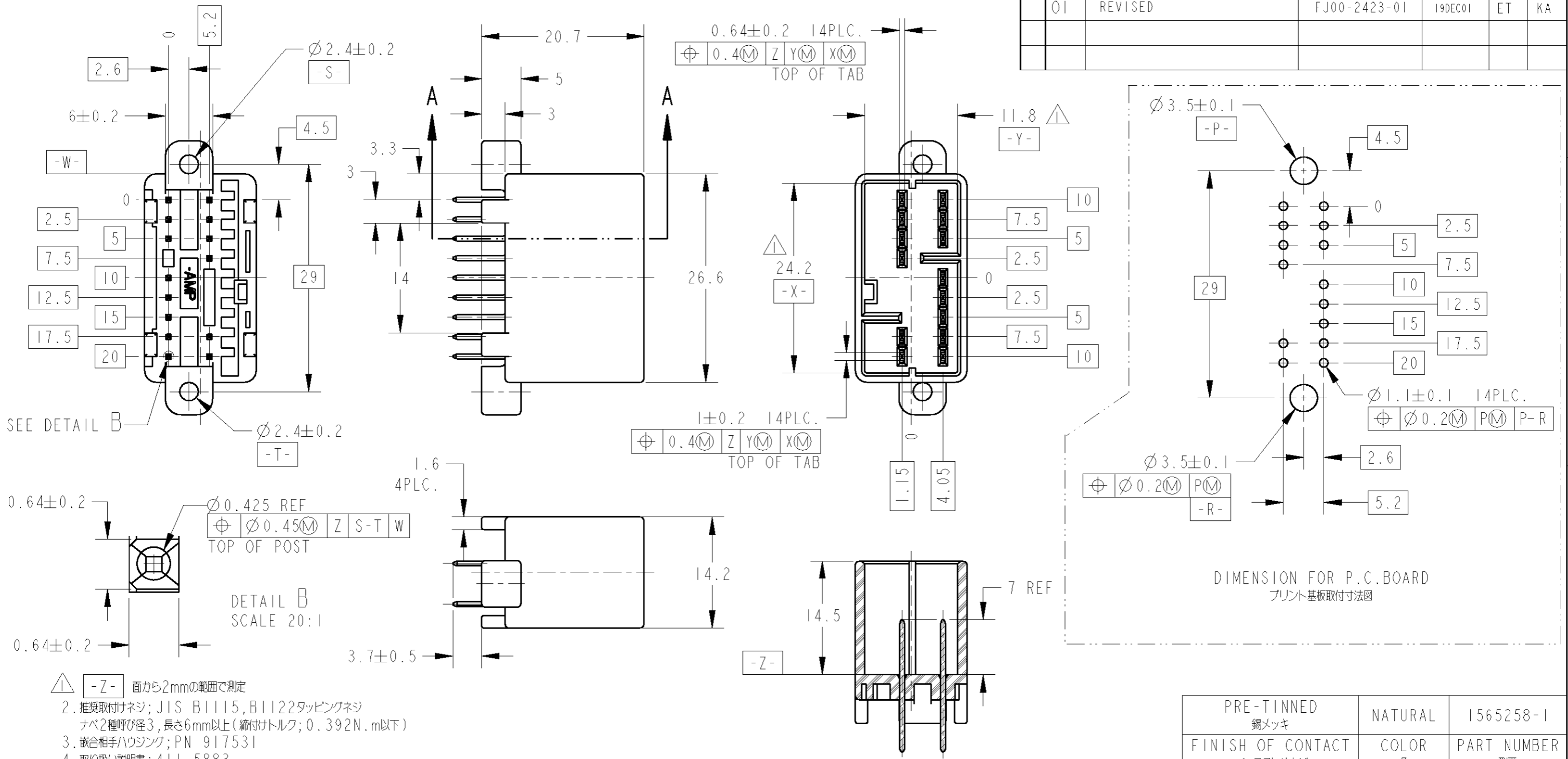


THIS DRAWING IS UNPUBLISHED. RELEASED FOR PUBLICATION
 © COPYRIGHT - BY TYCO ELECTRONICS CORPORATION. ALL RIGHTS RESERVED.

LOC	DIST	REVISIONS						
J	-	P	LTR	DESCRIPTION	ECN	DATE	DWN	APVD
		0		RELEASED	FJ00-2455-01	24OCT01	ET	KA
		01		REVISED	FJ00-2423-01	19DEC01	ET	KA



- △ -Z- 面から2mmの範囲で測定
- 推奨取付けネジ; JIS B1115, B1122タッピングネジ
ナベ2種呼び径3, 長さ6mm以上 (締付けトルク; 0.392N.m以下)
 - 嵌合相手ハウジング; PN 917531
 - 取り付け説明書; 411-5883
 - 梱包形態; 内装 - 紙チューブ
外装 - ダンボール

- △ MUST BE KEPT BETWEEN -Z- AND 2.
- RECOMMENDED MOUNTING SCREW 3mm DIA, 6mm LENGTH MAX.
PAN HEAD, CLASS 2 TAPPING SCREW SPECIFIED
IN JIS B1115, B1122.
(TIGHTENING TORQUE; 0.392N.m MAX)
 - MATING PLUG HOUSING; PN 917531
 - INSTRUCTION SHEET; 411-5883
 - PACKING STYLE; INNER - PAPER TUBE
OUTER - PAPER BOX

THIS DRAWING IS A CONTROLLED DOCUMENT FOR TYCO ELECTRONICS CORPORATION
IT IS SUBJECT TO CHANGE AND THE CONTROLLING ENGINEERING ORGANIZATION
SHOULD BE CONTACTED FOR THE LATEST REVISION.

DIMENSIONS:	TOLERANCES UNLESS OTHERWISE SPECIFIED:
単位: 概 mm	±0.3
	0 PLC ±
	1 PLC ±0.1
	2 PLC ±0.01
	3 PLC ±0.001
	4 PLC ±
	ANGLES ±3°00'

MATERIAL PBT FINISH 仕上 SEE TABLE

DWN	E. TAKIZAWA	24OCT01
CHK	K. ASAI	24OCT01
APVD	K. ASAI	24OCT01
PRODUCT SPEC	108-5470	
APPLICATION SPEC		
WEIGHT	5.3 g	

PRE-TINNED 錫メッキ	NATURAL	1565258-1
FINISH OF CONTACT コンタクト仕上げ	COLOR	PART NUMBER 型番
WIRE RANGE 包合電線断面積	INSULATION DIA 被覆外径	
0.3~0.5 mm ²	1.1~2.0 mm	
<p>AMP Tyco Electronics AMP K.K. Kawasaki, Japan</p>		
<p>NAME 名称 040MLC CONNECTOR 14POSITIONS CAP ASSEMBLY (VERTICAL TYPE)</p>		
SIZE	CAGE CODE	DRAWING NO
A3	00779	1565258
<p>CUSTOMER DRAWING</p>		
SCALE 尺度	SHEET	REV
2:1	1 OF 1	01

单击下面可查看定价，库存，交付和生命周期等信息

[>>TE Connectivity\(泰科\)](#)