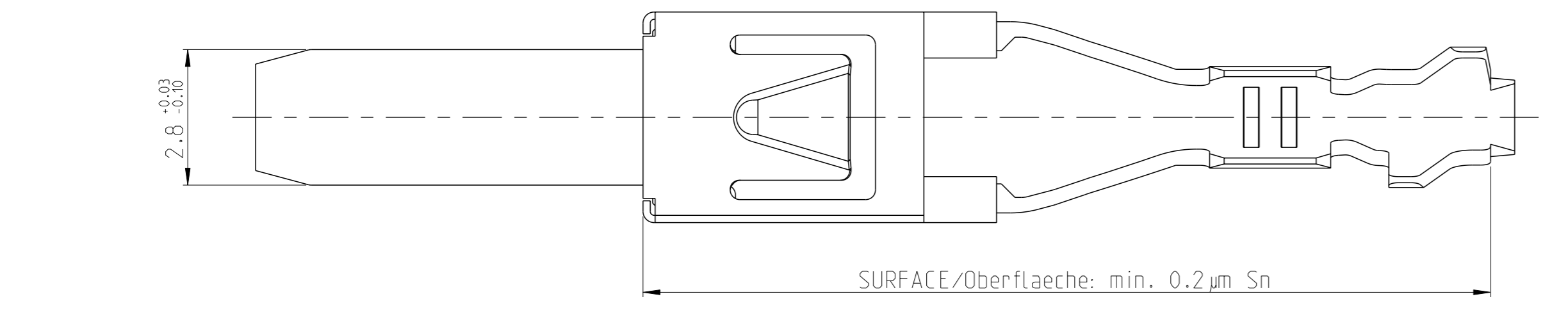
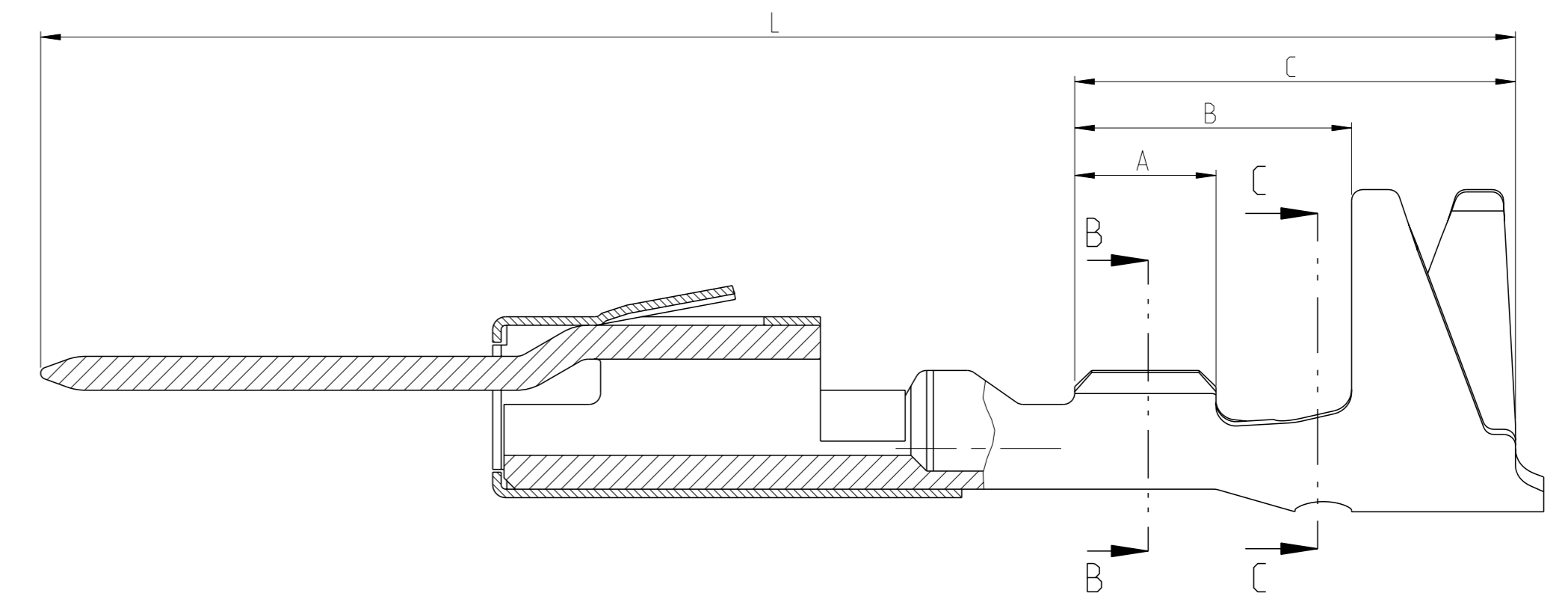
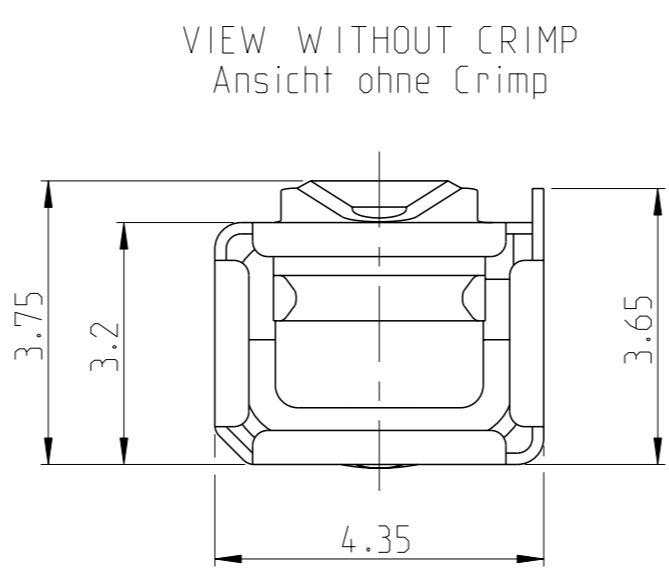
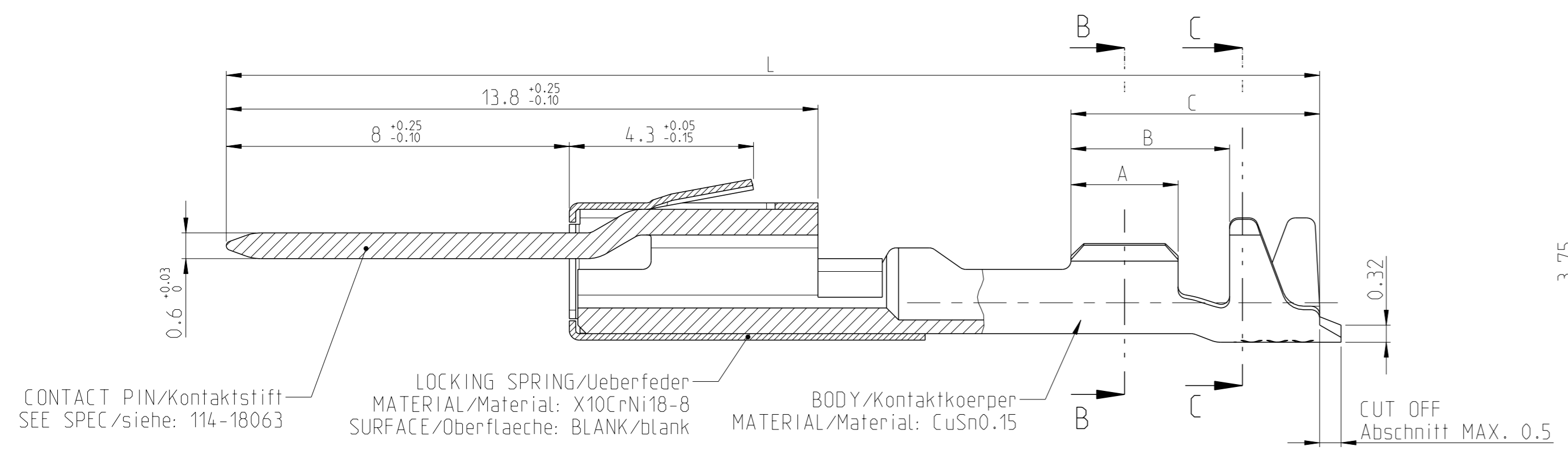


REVISIONS				
#	CLM	DESCRIPTION	DATE	APPV
A10		E-20-000783	16JAN2020	FRAN SCHI
A11		Updated general tolerance	22MAY2020	FRAN SCHI
A12		968136-5 and 968137-5 obsolete	16SEP2020	BREN SCHI
A13		1355964-6 added	16AUG2021	FRAN SCHI

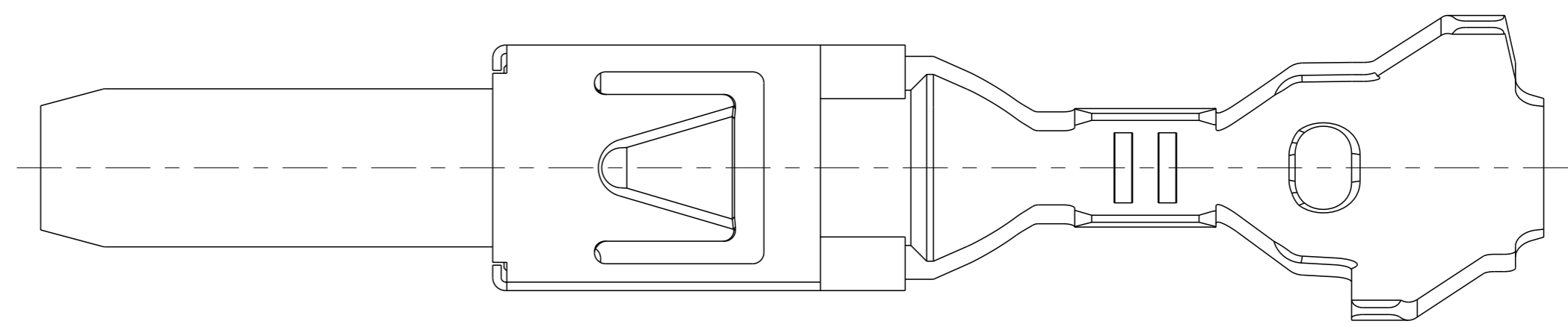
STANDARD APPLICATION
 Normale Anwendung

SINGLE WIRE SEAL SYSTEM
 Einzeldichtungssystem

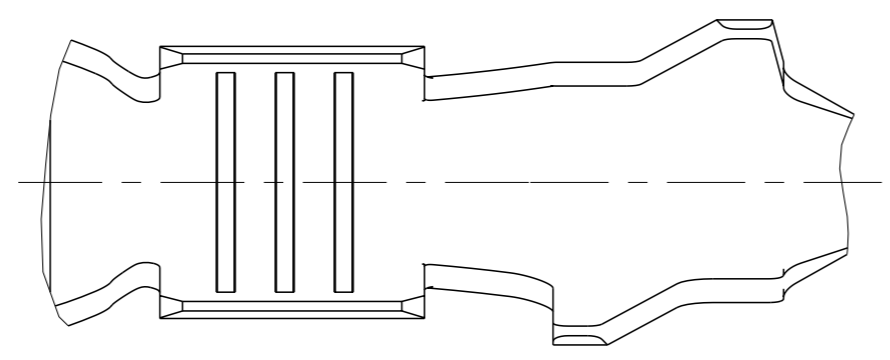
(MISSING DIMENSIONS SEE STANDARD APPLICATION)
 (Fehlende Masse siehe normale Anwendung)



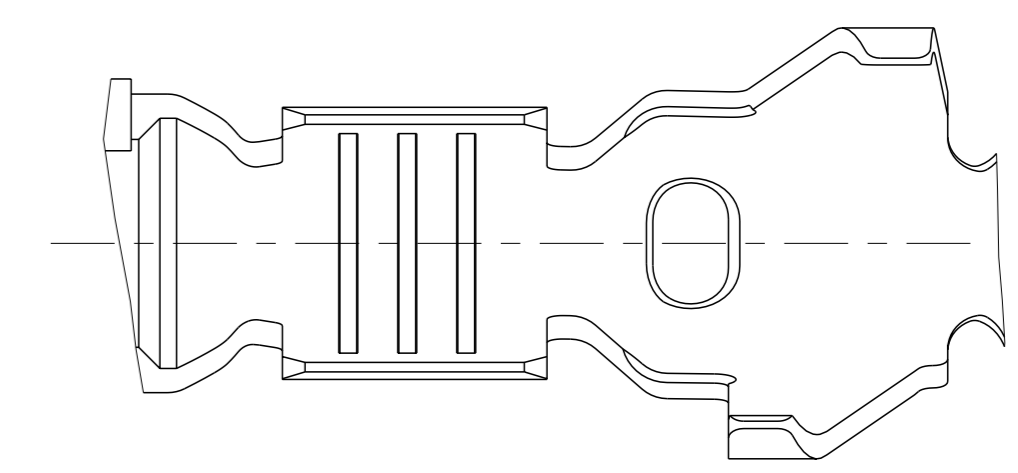
CRIMP DESIGN B
 Crimpausführung B



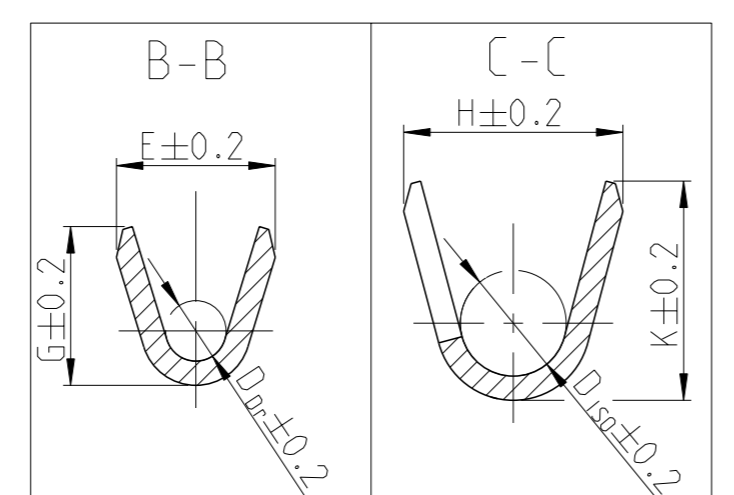
CRIMP DESIGN D
 Crimpausführung D



CRIMP DESIGN A
 Crimpausführung A



CRIMP DESIGN C
 Crimpausführung C



CRIMP DESIGN Crimpausführung	TE ORDER NO STRIP FORM TE Bestell-Nr. Bandware	REV.	SURFACE OBERFLAECH	VERSION	WIRE SIZE RANGE Drahtgroessenbereich (mm ²)	CRIMPLENGTHS Crimplaengen (mm)	WIRE CRIMP Drahtcrimp (mm)	INSULATION CRIMP Isolationscrimp (mm)	CONTACT LENGTH Kontaktlaenge (mm)	KIND Art	GRAM Gramm	WEIGHT Gewicht	APPLICATION Verarbeitung	ORDER NO. Bestell-Nr. Tab.Nr.: 118-18005-500	COLOUR Farbe	SUITABLE SINGLE WIRE SEAL Zugehoerige Einzeldichtung				
																A	B	C	E	G
C	968139-5	C	Au	SINGLE WIRE SEAL SYSTEM Einzeldichtungs-System	>1-2.5	3.5	5.9	8.8	3.6	3.8	1.7	5.7	6.1	3.5	26.1	-	-	967609-1	YELLOW gelb	
	968139-2	C	Sn															967610-1	GREY grau	
	968138-5	C	Au															967610-1	GREY grau	
	968138-2	C	Sn															967610-1	GREY grau	
D	968681-5	A	Au	STANDARD APPLICATION Normale Anwendung	>2.5-4.0	2.5	4.9	7.8	2.1	2.1	0.8	5.4	5.7	3.2	26.9	-	-	-	-	
	968681-2	A	Sn																	SEE APPLICATION SPECIFICATION siehe Verarbeitungsspezifikation 114-1814-1-1
	1355964-6	A	Ag																	
	1355964-5	A	Au																	
1355964-2	B	Sn																		
A	968137-5	C	Au	STANDARD APPLICATION Normale Anwendung	>1-2.5	3.5	5.2	8.25	3.6	3.8	1.7	4.3	4.5	2.6	25.5	-	-	-	-	
	968137-2	C	Sn																	
	968136-5	C	Au																	
	968136-2	C	Sn																	
B	968679-5	A	Au	STANDARD APPLICATION Normale Anwendung	0.35-0.5	2.5	3.7	5.8	2.1	2.1	0.8	2.9	2.9	1.4	25.5	-	-	-	-	
	968679-2	A	Sn																	

NOTES
 Bemerkungen

- SUITABLE FOR SOCKET CONTACT SEE TE DRAWING: 1355934
 Passend zu Buchsenkontakt siehe TE-Zeichnung: 1355934
- DETAILS OF DESIGN ARE LEFT TO MANUFACTURER
 Einzelheiten der Ausfuehrung bleiben dem Hersteller ueberlassen
- ONLY FOR FLR-CONDUCTOR ACCORDING TO DIN 72551 -6
 Nur fuer FLR-Leitungen nach DIN 72551, Teil 6

THIS DRAWING IS A CONTROLLED DOCUMENT.		OWN S. Garcia	Z2MAY2000	STE TE Connectivity	
DIMENSIONS: mm		CHK R. Jetter	Z2MAY2000		
TOLERANCES UNLESS OTHERWISE SPECIFIED: DIN 6930-2-mH		APVD	NAME	Micro Power Quadlok Tabellenzeichnung Flachkontakt TABLE TAB CONTACT	
MATERIAL		PRODUCT SPEC	SIZE	RESTRICTED TO	
FINISH		108-18476	114-1814.1	A1	
WEIGHT		APPLICATION SPEC	114-1814.1	CAGE CODE DRAWING NO	
CUSTOMER DRAWING		114-1814.1	00779	©=1355933	
SCALE		WEIGHT	10:1	SHEET 1 OF 1	
REV		SCALE	10:1	REV A13	

单击下面可查看定价，库存，交付和生命周期等信息

[>>TE Connectivity\(泰科\)](#)