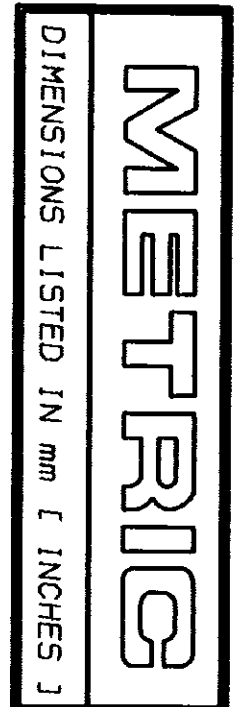
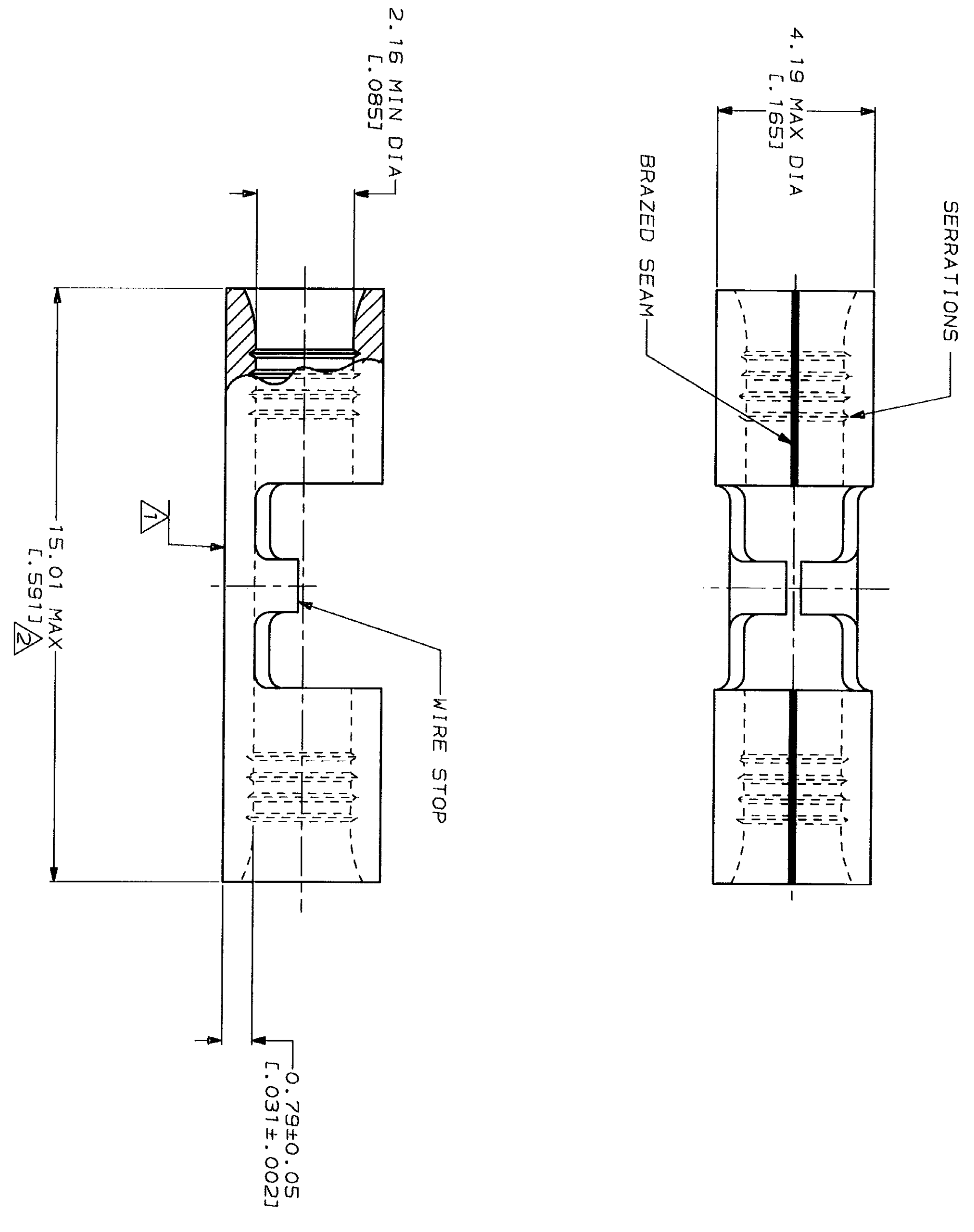


| LOC | DIST | ZONE | LTR | REV & REDRAWN PER | DATE | APP'D |
|-----|------|------|-----|--------------------------------|---------|-------|
| G | 14 | P | C | REV & REDRAWN PER 0720-0040-93 | 4-13-93 | JMP |



| | |
|--------------------------------|--------------------------------|
| AMP WIRE RANGE | UL E13288 Listed |
| 16-14 AWG SOLID OR STRANDED | 16-14 AWG SOLID OR STRANDED |
| LR7189 Certified | MILITARY P/N AND CLASS |
| 16-14 AWG SOLID OR STRANDED | NOT APPLICABLE |

1 STAMP AMP 16-14* APPROX AS SHOWN
 2 MAXIMUM LENGTH DOES NOT INCLUDE
 MANUFACTURING TABS



| | | | |
|---|--|---|---|
| AMP INCORPORATED CUSTOMER SERVICE SYSTEMS | | MAX RECOMMENDED OPERATING TEMPERATURE: 170°C MAX | DO NOT SCALE PRINT. UNLESS SPECIFIED DIMENSIONS IN mm FINISHES— TOLERANCES ON: 2 PLC DEC # — 3 PLC DEC # — ANGLES |
| FOR ADDITIONAL PRODUCT INFORMATION OR COPIES OF DRAWINGS AND TECHNICAL DOCUMENTS | PRODUCT INFORMATION CENTER 1-800-522-6752 | VOLTAGE RATING: NOT APPLICABLE | DR 4-13-93 TA BRINKMAN |
| FOR APPLICATION TOOLING INFORMATION | TOOLING ASSISTANCE CENTER 1-800-722-1111 | WIRE CROSS SECTIONAL AREA RANGE: 1.04-2.62mm ² [2,050-5,180] CIR MILS SOLID OR STRANDED | CHK 4-13-93 DA PATTERSON |
| FOR ORDER ENTRY | 1-800-526-5142 | THIS DRAWING IS A CONTROLLED DOCUMENT FOR AMP INCORPORATED. IT IS SUBJECT TO CHANGE AND THE CONTROLLING ENGINEERING ORGANIZATION SHOULD BE CONTACTED FOR THE LATEST REVISION. | APPD 4-13-93 DE MILLER |

| | | | |
|--|----------------------|---|-------------------|
| FINISH TIN PLATE 0.00254 [L.000100] MIN THK PER MIL-T-10727 | APPLICATION SPEC | NAME AMP AMP Incorporated Harrisburg, PA 17105-3608 | 322459 PART NO |
| WEIGHT | SCALE 10:1 | SPLICE, BUTT, STRAP, SOLISTRAND™ | 322459 |
| SIZE CAGE CODE 00779 | DRAWING NO 322459 | 1 OF 1 | |

单击下面可查看定价，库存，交付和生命周期等信息

[>>TE Connectivity\(泰科\)](#)