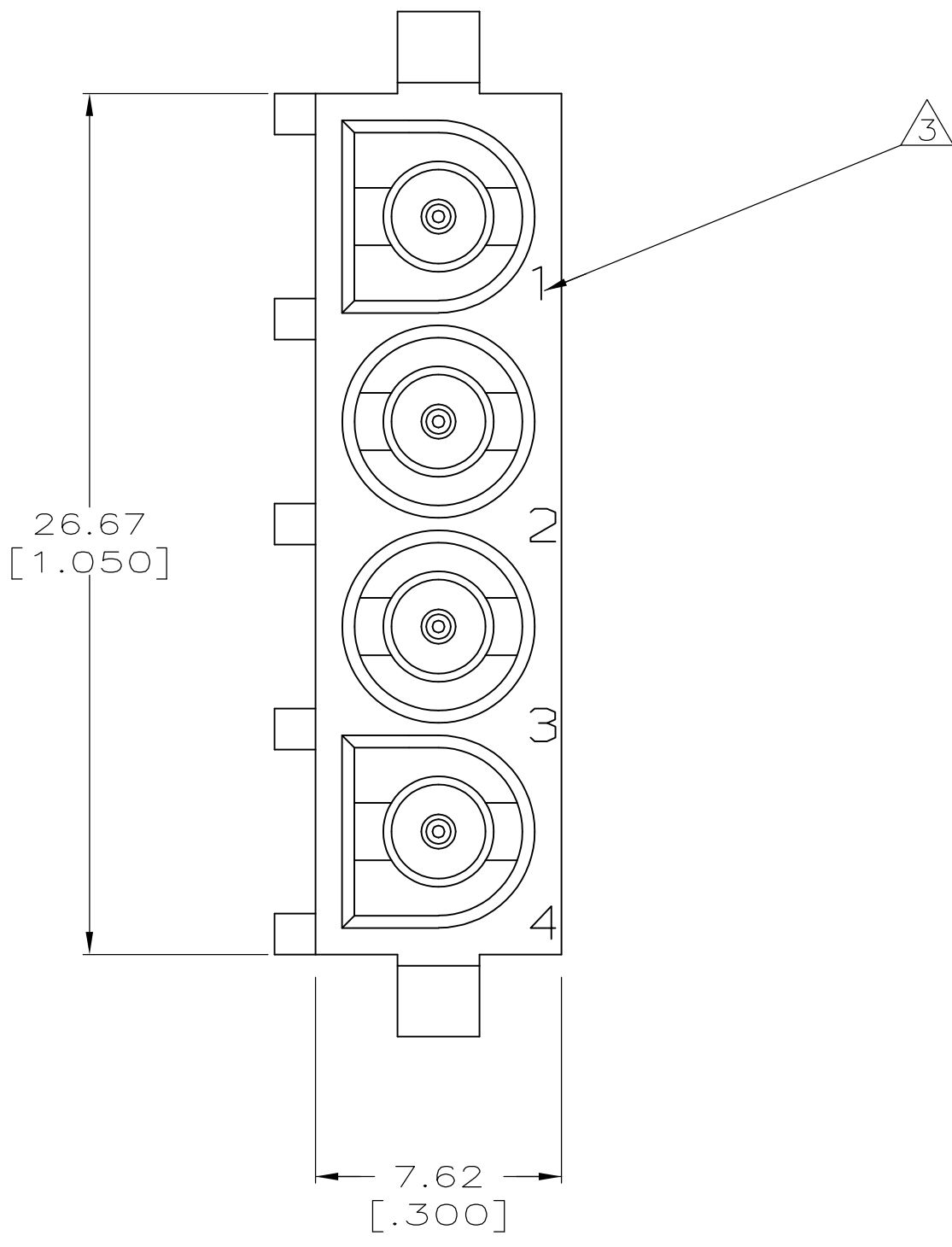
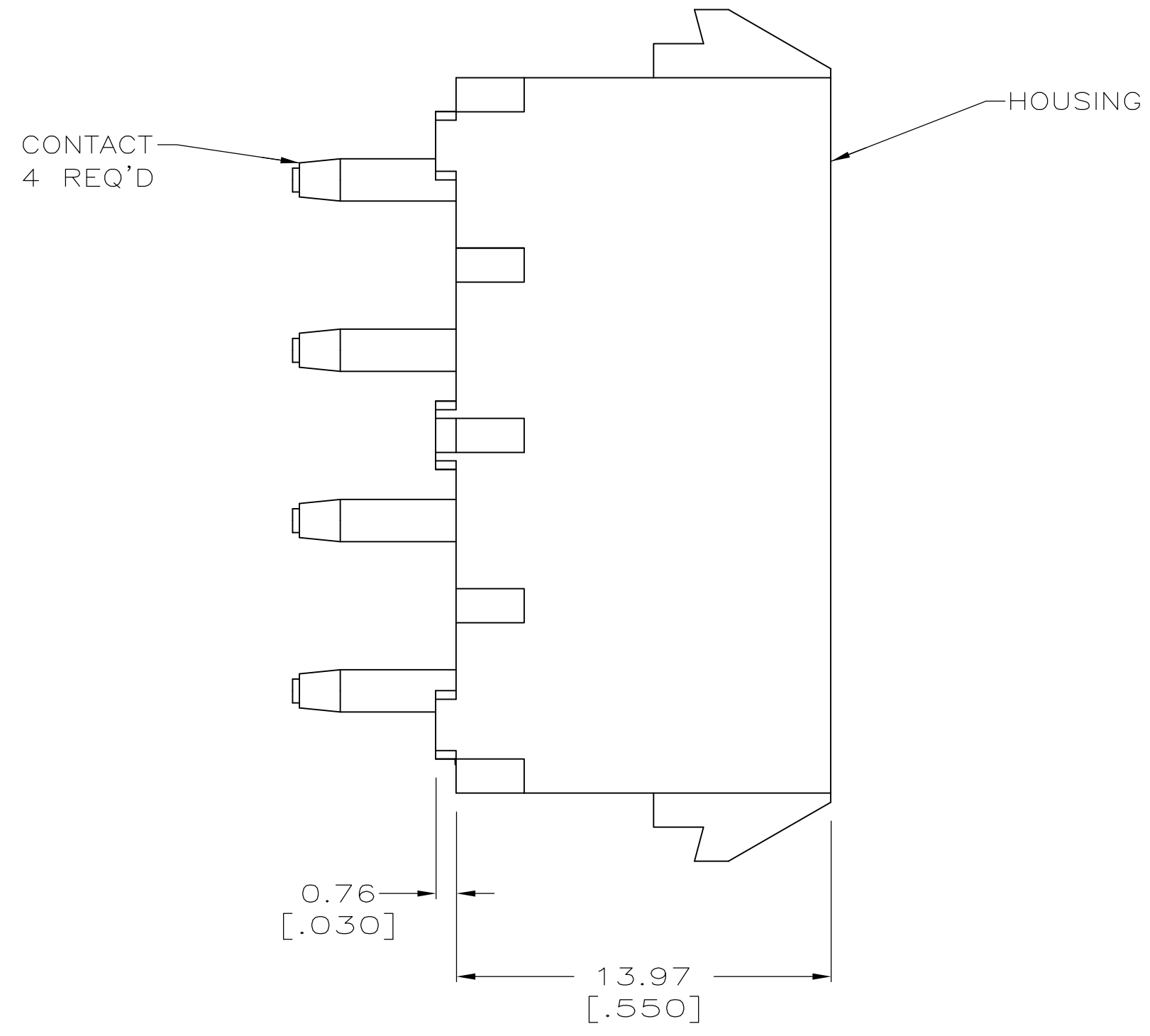
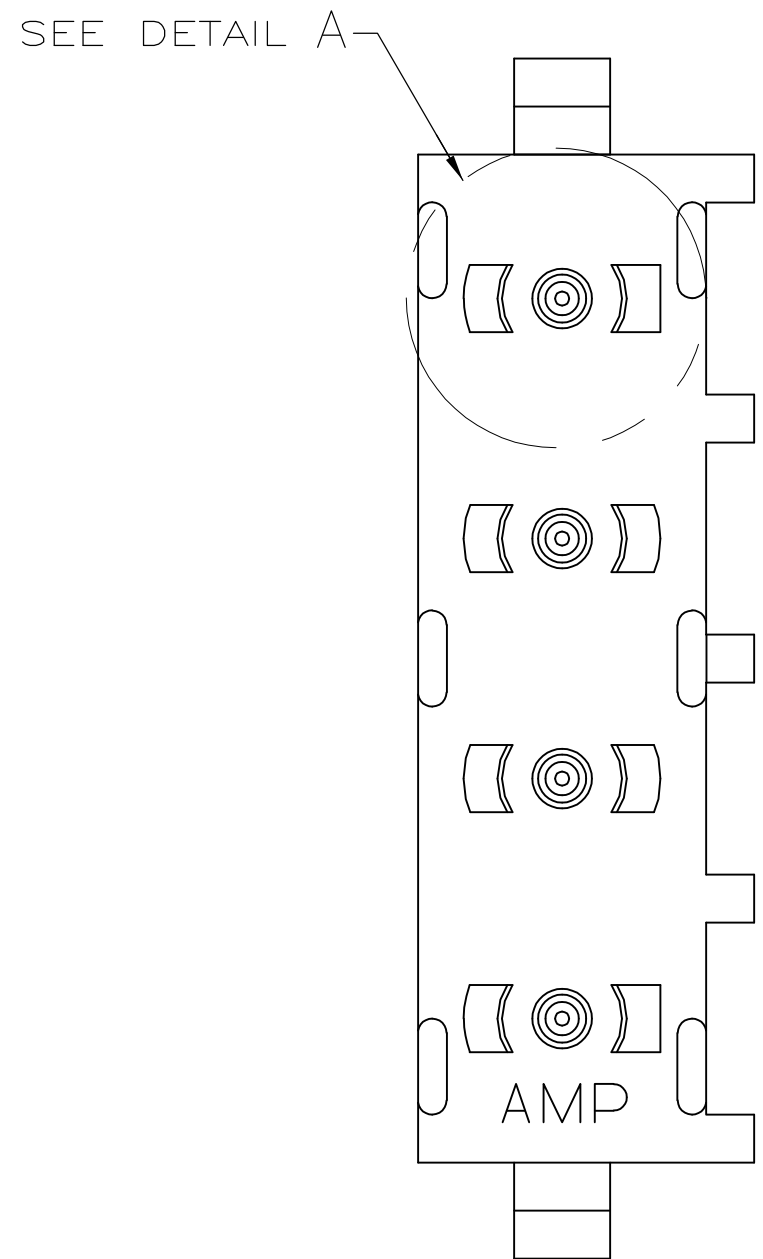
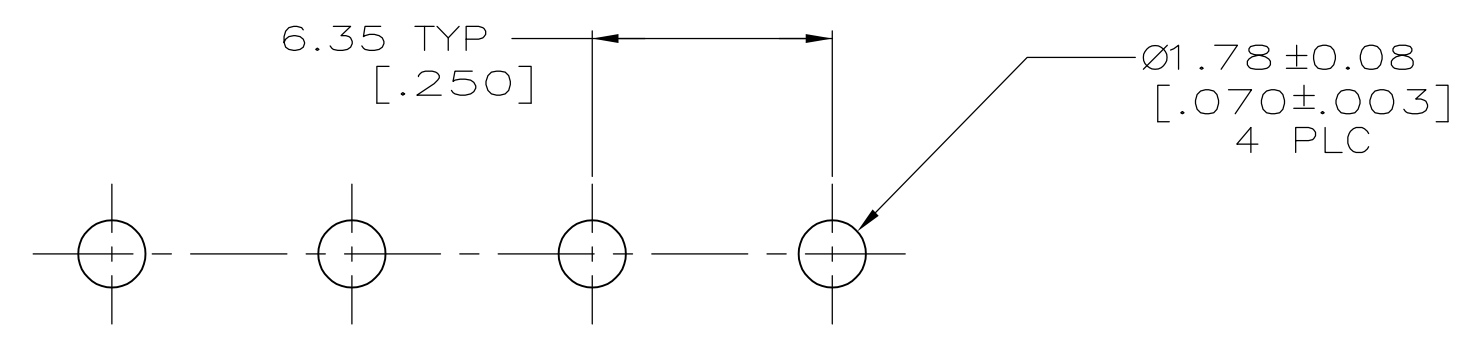
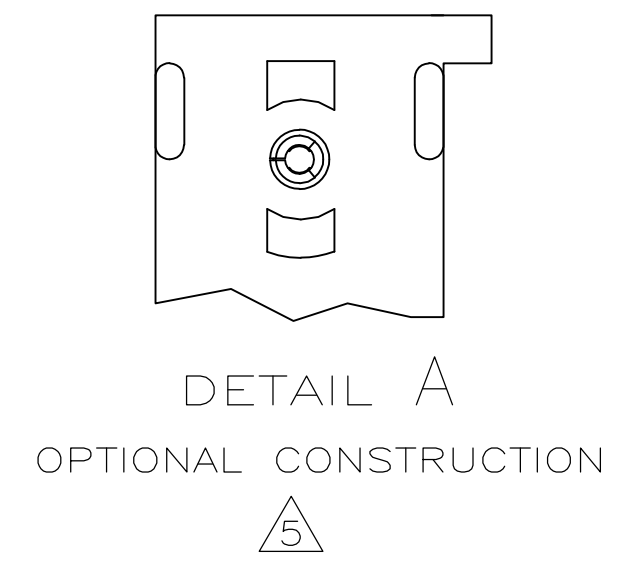
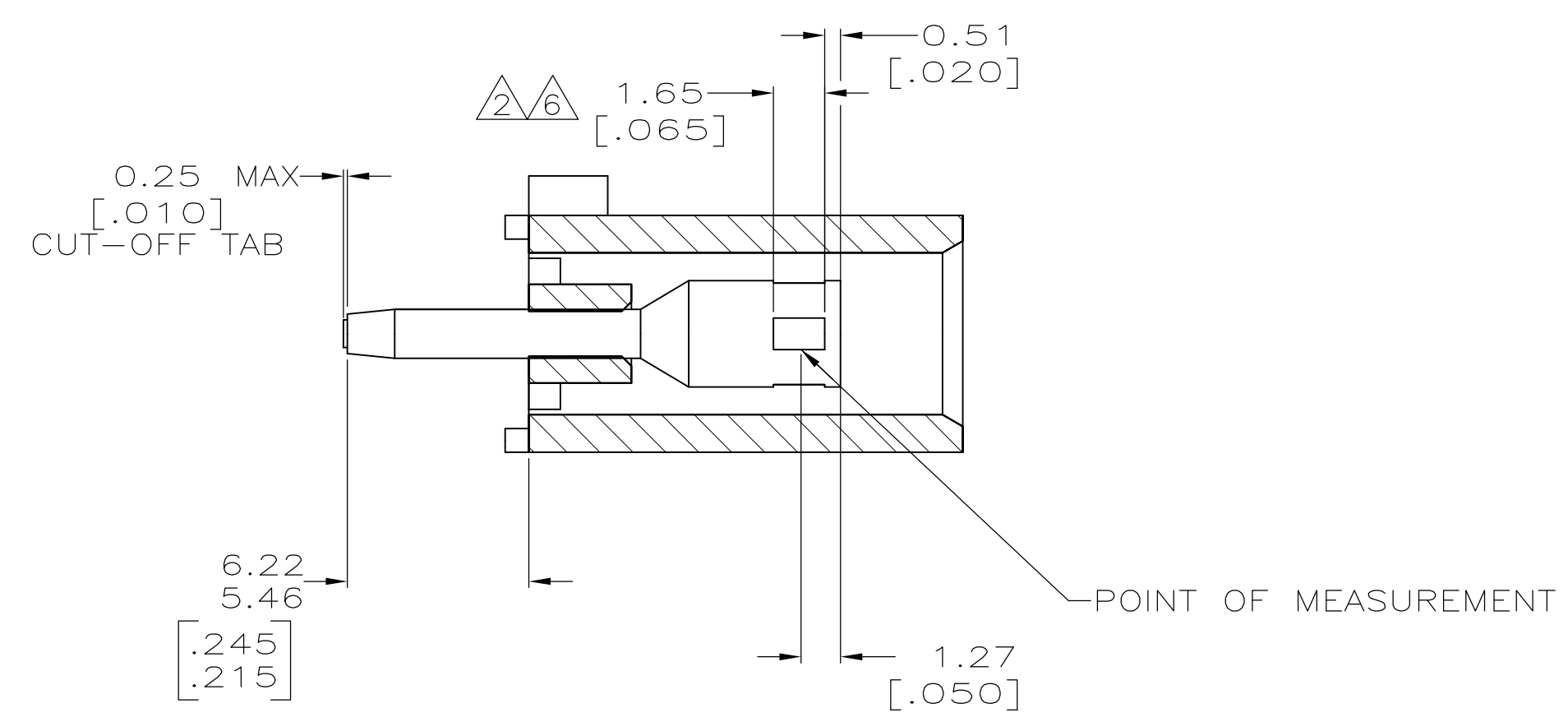
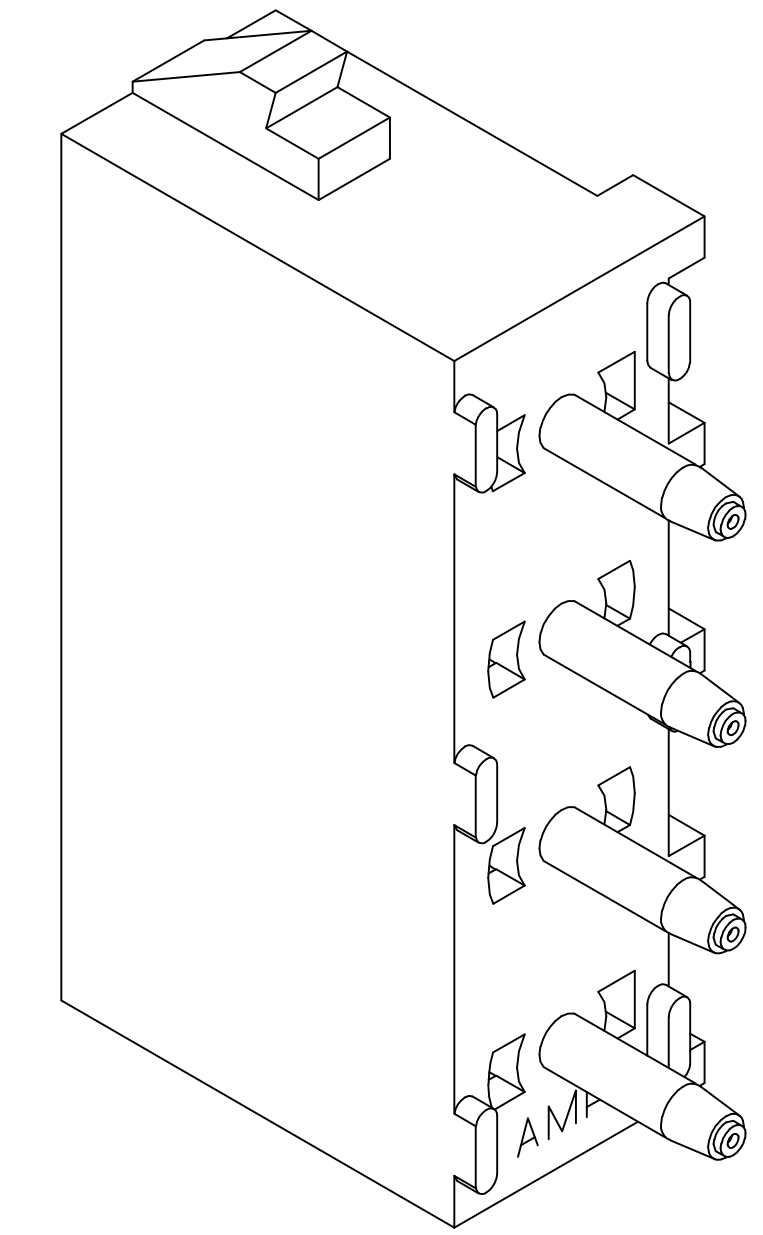


LOC		DIST		REVISIONS			
CM	00	REV	DATE	BY	CHK	APPV	
N1	REVISED PER ECR-12-011660		28JAN13	KH		TM	



- 1 PARTS COMPLY TO AMP SOLDERABILITY SPECIFICATION 109-11-3.
- 2 CONTACT IS PLATED OVERALL WITH 0.00127 [.000050] NICKEL, THEN 0.00076 [.000030] GOLD OVER CONTACT LENGTH INDICATED AND MATTE TIN LEAD ON SOLDER TAIL END.
- 3 CIRCUIT IDENTIFICATION CHARACTERS ARE ADJACENT TO THE INDICATED CAVITIES, BUT LOCATION AND ORIENTATION MAY DIFFER FROM PRINT.
- 4 DIMENSIONS IN BRACKETS ARE IN INCHES.
- 5 DRAIN HOLES LOCATED AS SHOWN. OPTIONAL CONSTRUCTION - ALL DRAIN HOLES LOCATED 90° AS SHOWN IN DETAIL A.
- 6 CONTACT IS PLATED OVERALL WITH 0.00127 [.000050] NICKEL, THEN 0.00076 [.000030] GOLD OVER CONTACT LENGTH INDICATED AND MATTE TIN ON SOLDER TAIL END.
- 7 SUPERSEDED BY 350833-4



RECOMMENDED MOUNTING HOLE PATTERN FOR 3.18 [.125] THICK P.C. BOARD

CONTACT MATERIAL AND FINISH		HOUSING MATERIAL		PART NUMBER	
PHOSPHOR BRONZE, GOLD	NYLON, UL94V-0, WHITE	350833-4			
PHOSPHOR BRONZE, GOLD	NYLON, UL94V-0, WHITE	350833-2			
PHOSPHOR BRONZE, PRE-TIN	NYLON, UL94V-0, WHITE	350833-1			

THIS DRAWING IS A CONTROLLED DOCUMENT.		DIN R LEWIS 10-02-98		STE TE Connectivity	
DIMENSIONS: mm [INCHES]		CHK R SWING 10-02-98		NAME M TRULL 10-02-98	
TOLERANCES UNLESS OTHERWISE SPECIFIED:		APPROD M TRULL 10-02-98		PRODUCT SPEC	
0 PLC ± -	1 PLC ± -	APPLICATION SPEC		SIZE CAGE CODE DRAWING NO	
2 PLC ± 0.13 [.005]	3 PLC ± -	WEIGHT		A1 00779 C=350833	
4 PLC ± -	ANGLES ± 0±30°	CUSTOMER DRAWING		SCALE 5:1 SHEET 1 OF 1 REV N1	

单击下面可查看定价，库存，交付和生命周期等信息

[>>TE Connectivity\(泰科\)](#)