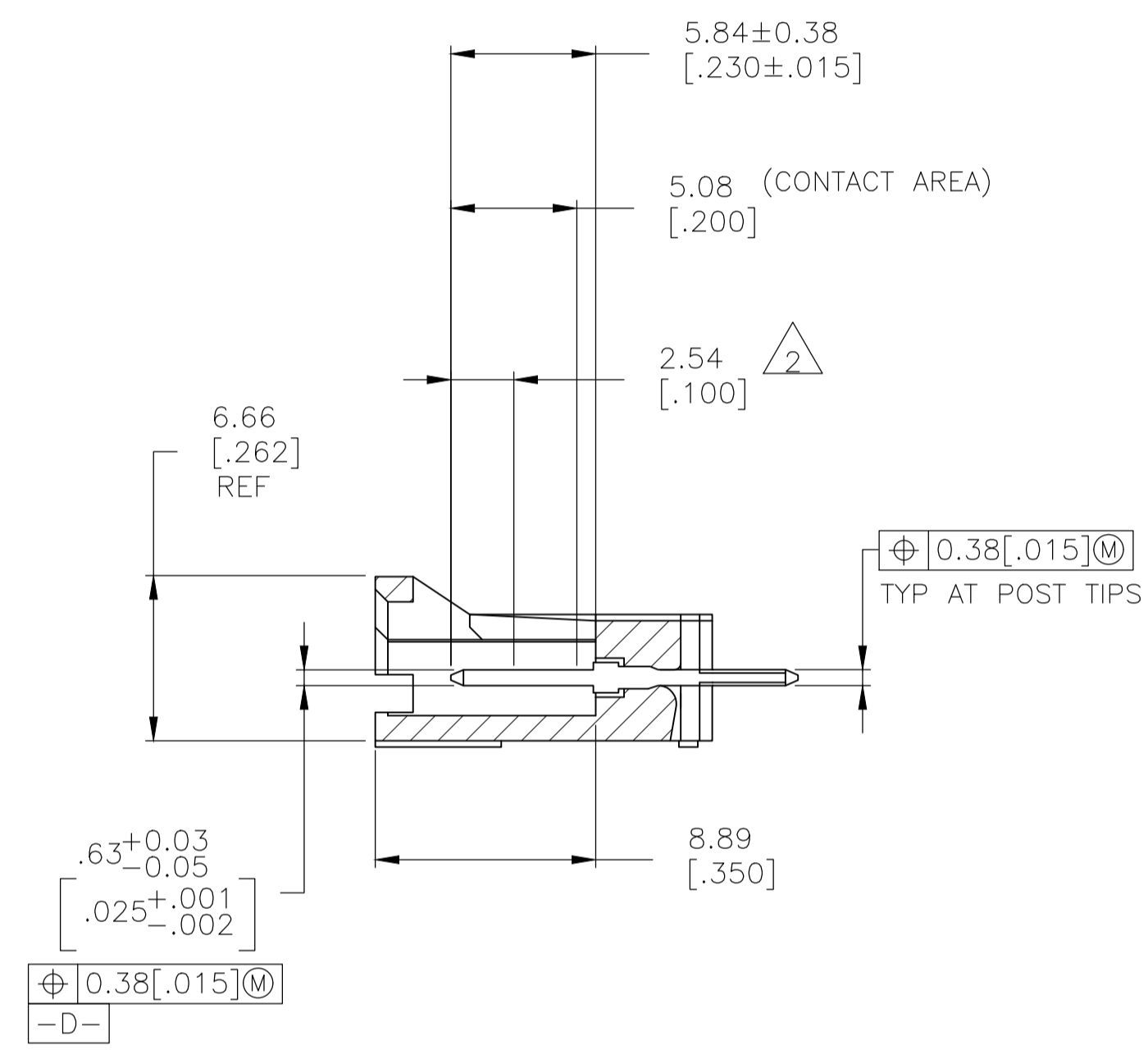
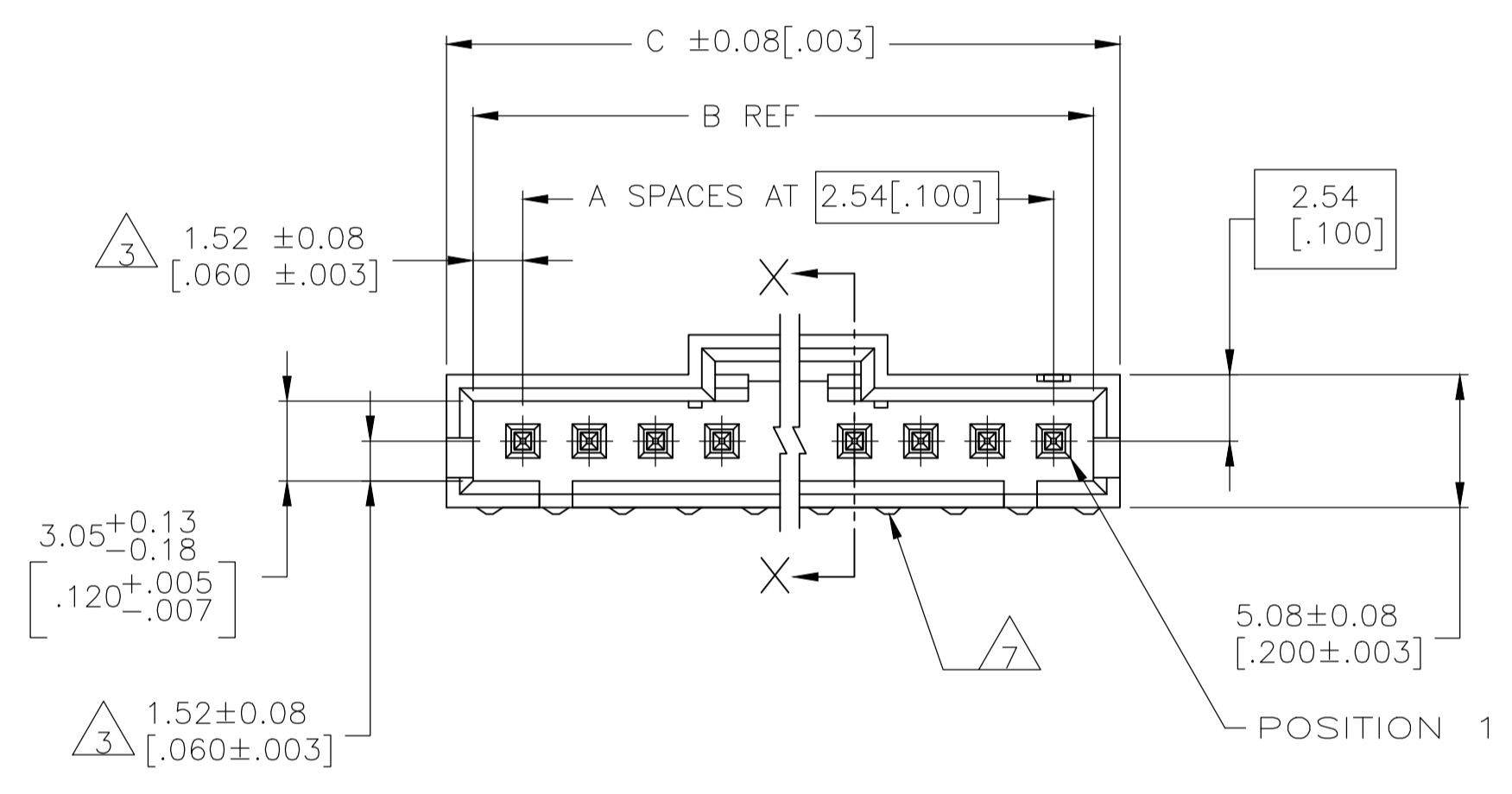
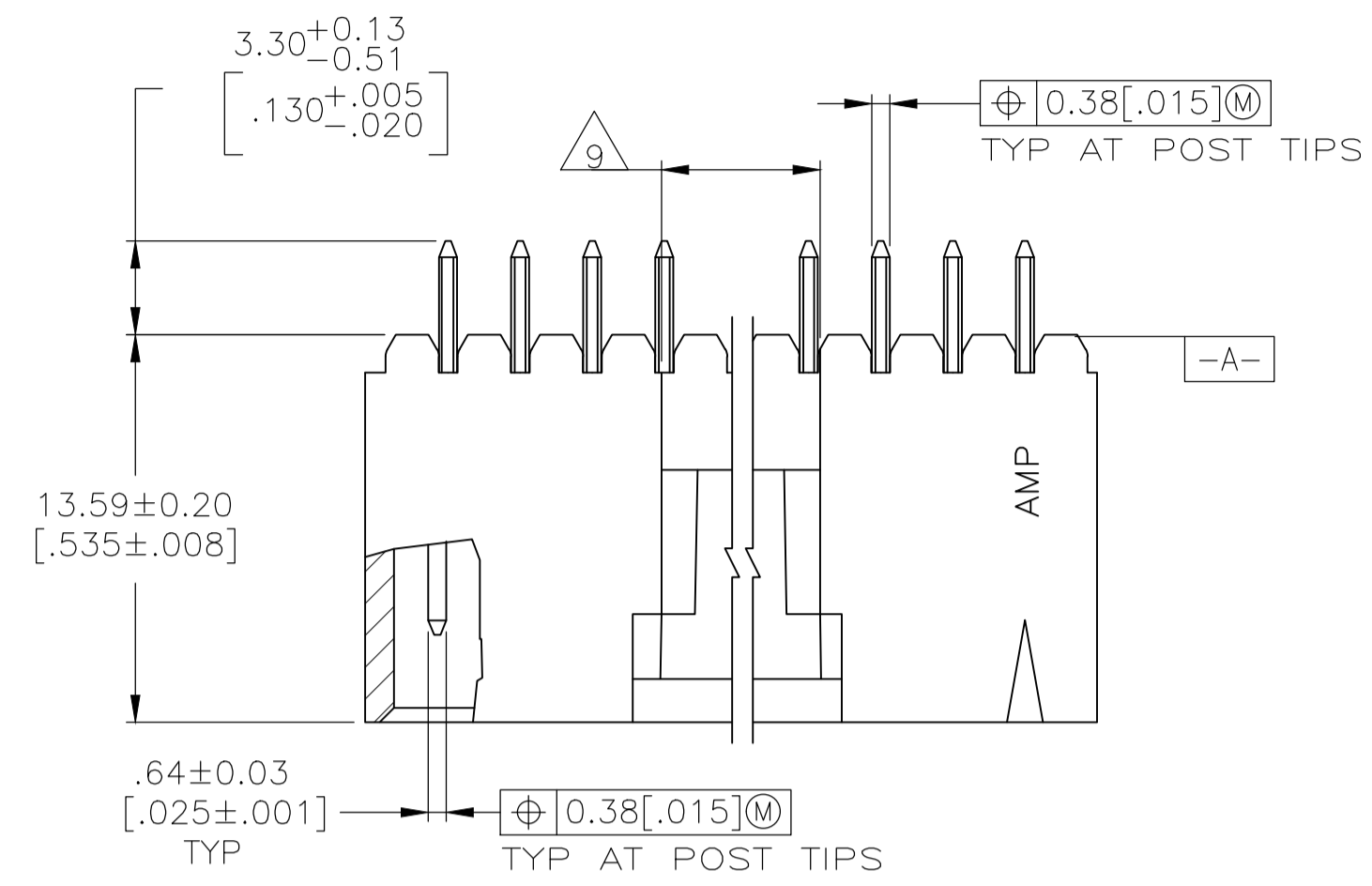
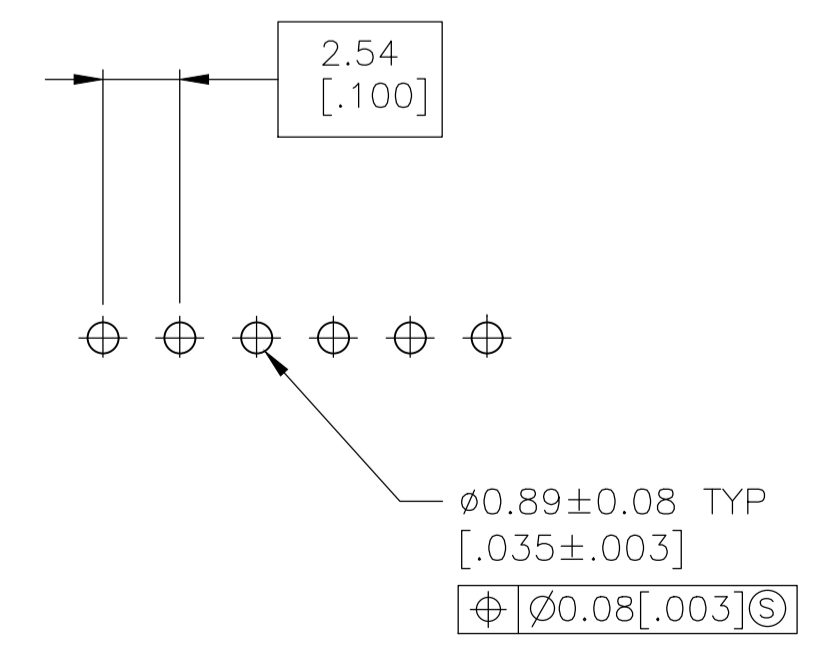


REVISIONS					
P	LTR	DESCRIPTION	DATE	DMN	APVD
D		REVISED PER ECO-20-001912	03JUN2020	SB	JO



SECTION X-X

- 1 FINISH: 0.00254[.000100] BRIGHT TIN-LEAD OVER 0.00127[.000050] NICKEL.
- 2 POINT OF MEASUREMENT FOR PLATING THICKNESS.
- 3 THE NOTED DIMENSIONS APPLY FROM THE BASIC DIMENSION CENTER LINE (NOT THE POST CENTER LINE) TO THE SURFACE INDICATED.
- 4 MATERIAL- HOUSING: LCP, COLOR-BLACK. POSTS: BRASS.
- 5 FINISH: 0.00254[.000100] MATTE TIN OVER 0.00127[.000050] NICKEL.
- 6 HIGH TEMPERATURE CONFIGURATION
- 7 STANDOFFS NOT PRESENT ON UNDER SIDE OF ASSEMBLY
- 8 OBSOLETE PARTS: OBSOLETE CIS STREAMLINING PER D.RENAUD/D.SINISI
- 9 0.25 [.010] RECESS PERMISSIBLE IN THIS AREA FOR MOLD SHUT OFF



RECOMMENDED HOLE LAYOUT

8	OBSOLETE	6 7	5	2	35.43 [1.395]	35.56 [1.320]	12	13	5-147574-2
8	OBSOLETE	6 7	5	12	35.43 [1.395]	35.56 [1.320]	12	13	5-147574-1
		6	1	2	35.43 [1.395]	35.56 [1.320]	12	13	147574-2
8	OBSOLETE	6	1	12	35.43 [1.395]	35.56 [1.320]	12	13	147574-1
	REMARKS	FINISH	POST NO. OMITTED		C	B	A	NO. OF POSN	PART NO.

THIS DRAWING IS A CONTROLLED DOCUMENT.

DIMENSIONS: mm [INCHES]	TOLERANCES UNLESS OTHERWISE SPECIFIED:	DIN R BROWN 02-04-01	APVD K WRIGHT 02-04-01	NAME
0 PLC ± -	1 PLC ± -	2 PLC ± 0.13[.005]	3 PLC ± -	4 PLC ± -
ANGLES ± -	SEE TABLE	FINISH	WEIGHT	SIZE CASE CODE DRAWING NO
				A1 00779 C=147574
				CUSTOMER DRAWING

RESTRICTED TO

SCALE 4:1 SHEET 1 OF 1 REV D

单击下面可查看定价，库存，交付和生命周期等信息

[>>TE Connectivity\(泰科\)](#)