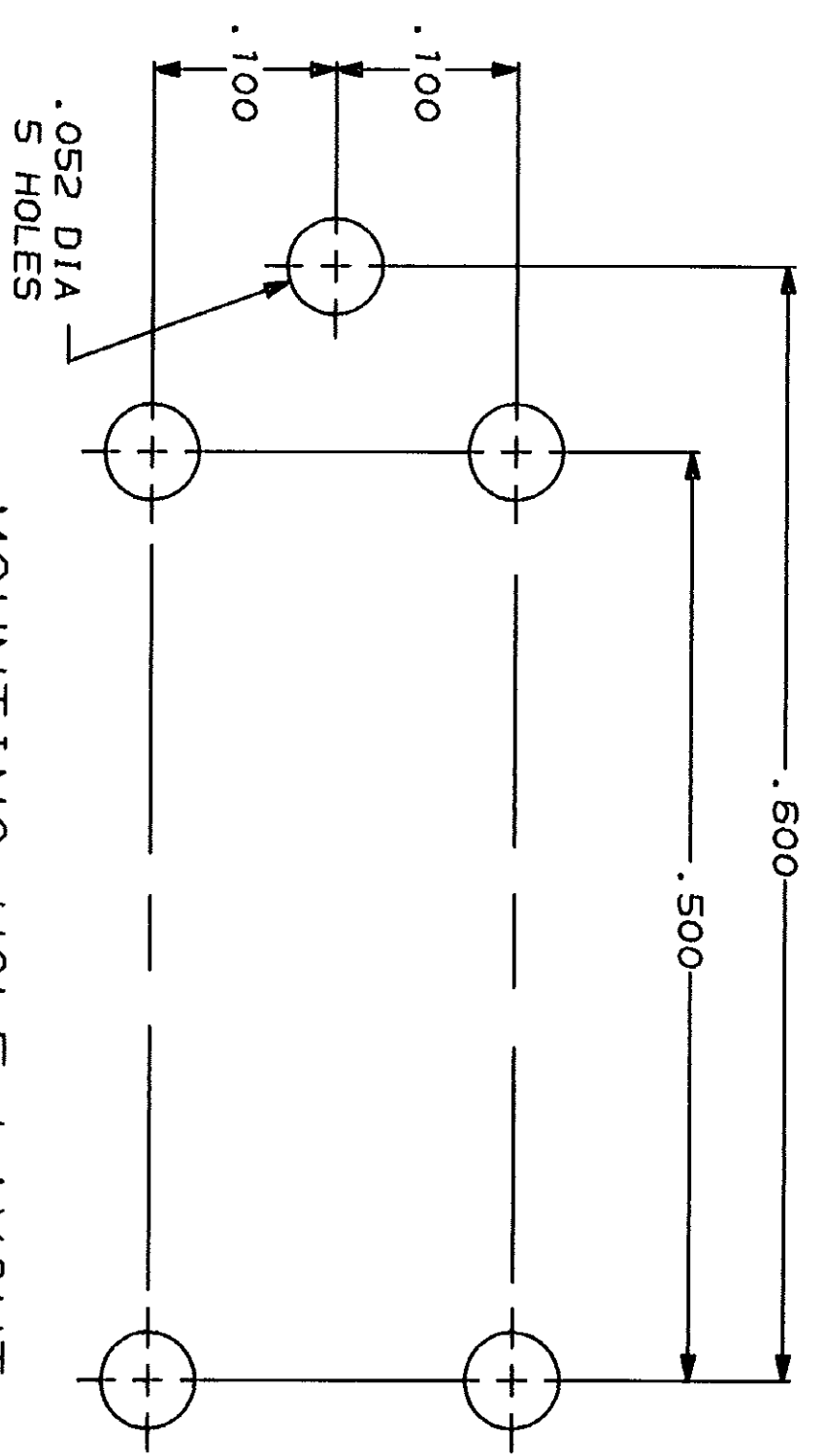
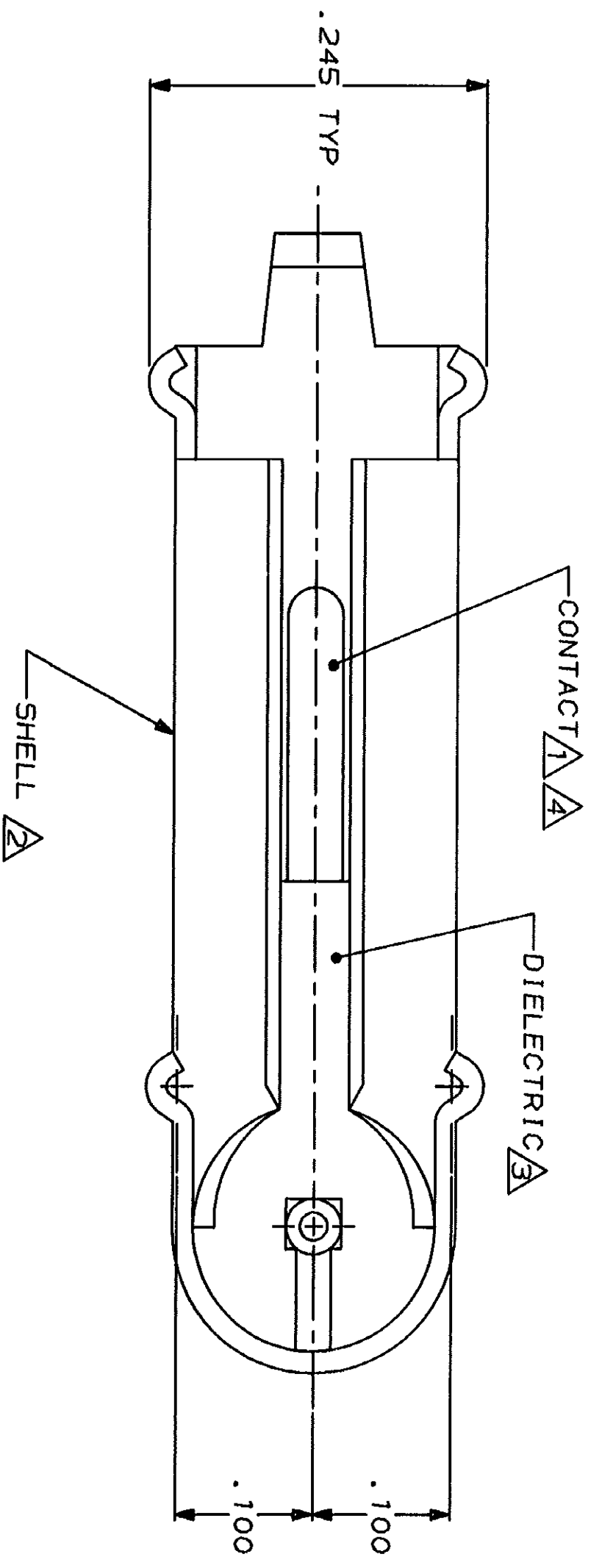
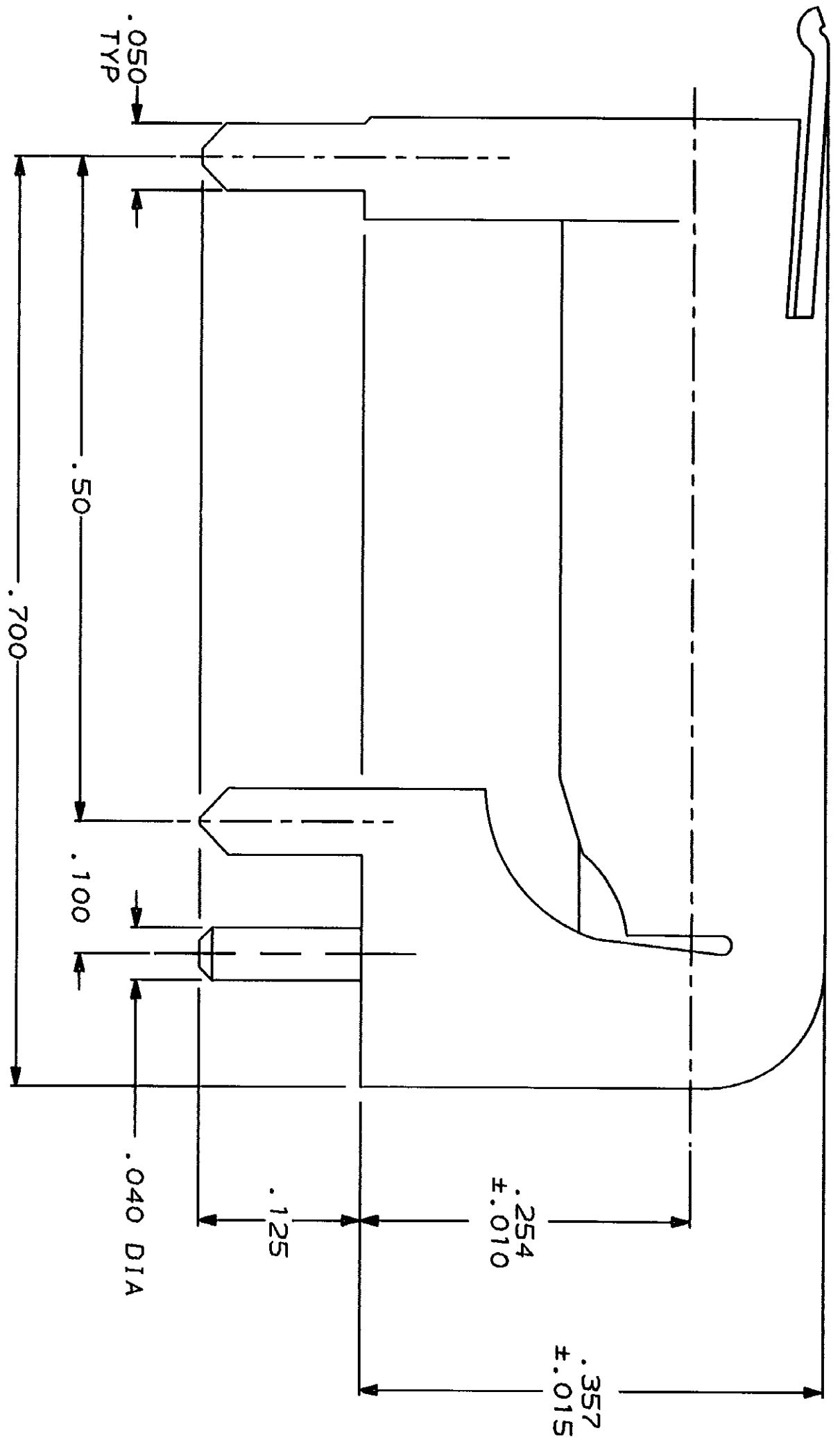


LOC	DIST	REV	ZONE	LTR	DESCRIPTION	DATE	APPD
AJ	16	P		Y	REVISED AND REDRAWN PER AJ-40408-28-89	02/02/89	JPD
		V		Z	OBS -4 PER AJ-3015		

- 1 BRASS PER QQ-B-626
- 2 BRASS PER MIL-C-50
- 3 POLYPROPYLENE, GENERAL PURPOSE.
- 4 GOLD PLATE PER MIL-G-45204, .000030 MIN THK.
- 5 TIN-LEAD PLATE PER ASTM-B-545
- 6. FOR USE WITH .062 MAX PRINTED CIRCUIT BOARD.
- 7. SEE I.S. 1204.



OBSOLETE	5	50084-4
	4	50084-1
SHELL FINISH		PART NUMBER

DR	J.L. GROFT	6-30-89	AMP	AMP INCORPORATED	HERSHBURG, Pa. 17105
CHK	S.J. MAGARO	9-28-89			
APPD	M. SNEED	1-16-90			
APPD	M. SNEED	1-16-90			
PRODUCT SPEC	108-12081				
FINISH	4 2 3				
APPLICATION SPEC					
WEIGHT					

DO NOT SCALE PRINT.	UNLESS SPECIFIED DIMENSIONS IN INCHES	TOLERANCES ON:	2 PLC DEC ± .01	3 PLC DEC ± .008	ANGLES #
SIZE	FSCM NO	DRAWING NO	50084		
SCALE	10:1	SHEET	1 OF 1		

CUSTOMER DRAWING

单击下面可查看定价，库存，交付和生命周期等信息

[>>TE Connectivity\(泰科\)](#)