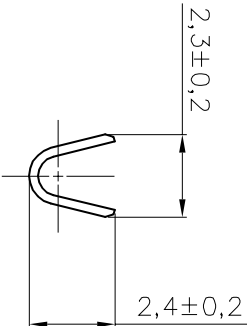
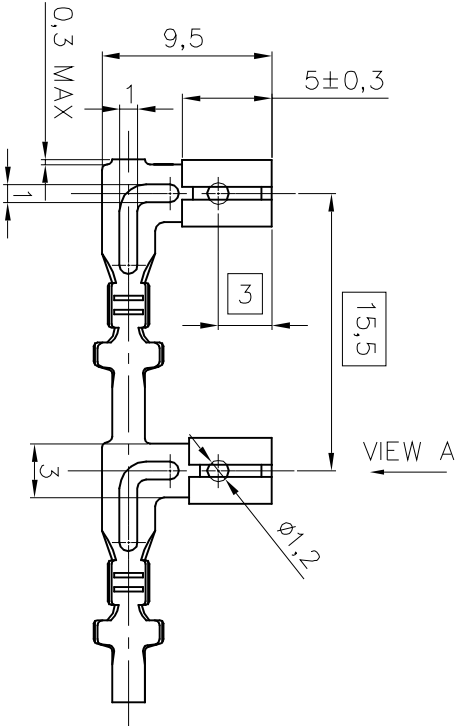


VIEW A  
2 : 1



SECTION B-B  
2 : 1



SECTION A-A  
2 : 1

NOTES:

1. MATERIAL: COPPER ALLOY.  
STRIP THICKNESS: 0.25 mm.
2. CONTINUOUS STRIP ON REELS.
3. APPLICATION DATA:  
WIRE: 0.3~0.8 mm<sup>2</sup> (AWG# 18 ~ AWG# 22).  
INSULATION: Ø 2.8 mm MAX.

DIST	LOC	P LTR	REVISION/RECORD	DATE	DNW	1
	EC					

TOLERANCES UNLESS OTHER SPECIFIED:		DR	DATE	DATE	DATE	DATE	DATE	DATE	DATE
0 PLG	± 0.20	DR	BOHS WONG	28-9-2004	28-9-2004	28-9-2004	28-9-2004	28-9-2004	28-9-2004
1 PLG	± 0.15	CHK	BOHS WONG	28-9-2004	28-9-2004	28-9-2004	28-9-2004	28-9-2004	28-9-2004
2 PLG	± 0.15	APP'D	F. SHUM	28-9-2004	28-9-2004	28-9-2004	28-9-2004	28-9-2004	28-9-2004
3 PLG	± 0.15	PRODUCT SPEC							
ANGLE	±	APPLICATION SPEC							
DIMENSIONS IN mm		114-58500							

RESTRICTED TO	SCALE	SIZE	DWG NO.	114-58500	1:1	A3	C-1494217
NAME	FINISH	FINISH	1494217-1	110 FASTON ANGLED RECEPTACLE	P/N	N/A	
DR	DATE	DATE	DATE	DATE	DATE	DATE	DATE
BOHS WONG	28-9-2004	28-9-2004	28-9-2004	28-9-2004	28-9-2004	28-9-2004	28-9-2004
F. SHUM	28-9-2004	28-9-2004	28-9-2004	28-9-2004	28-9-2004	28-9-2004	28-9-2004

TYCO ELECTRONICS	TYCO ELECTRONICS
Hong Kong Limited	Hong Kong Limited
Room 1301, Ocean Centre No. 5 Canton Rd, Tsimshatsui Kowloon Hong Kong	Room 1301, Ocean Centre No. 5 Canton Rd, Tsimshatsui Kowloon Hong Kong

单击下面可查看定价，库存，交付和生命周期等信息

[>>TE Connectivity\(泰科\)](#)