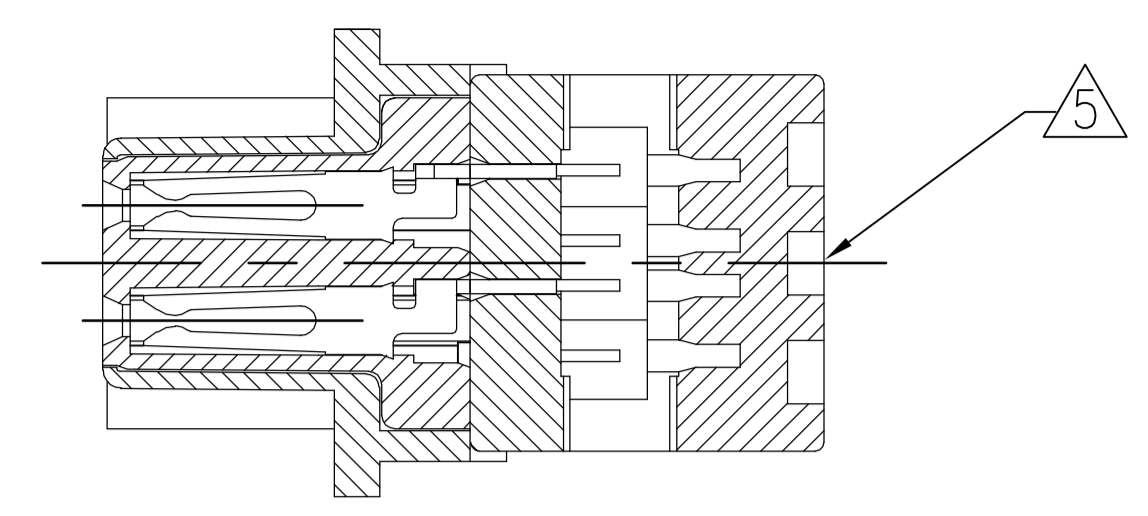
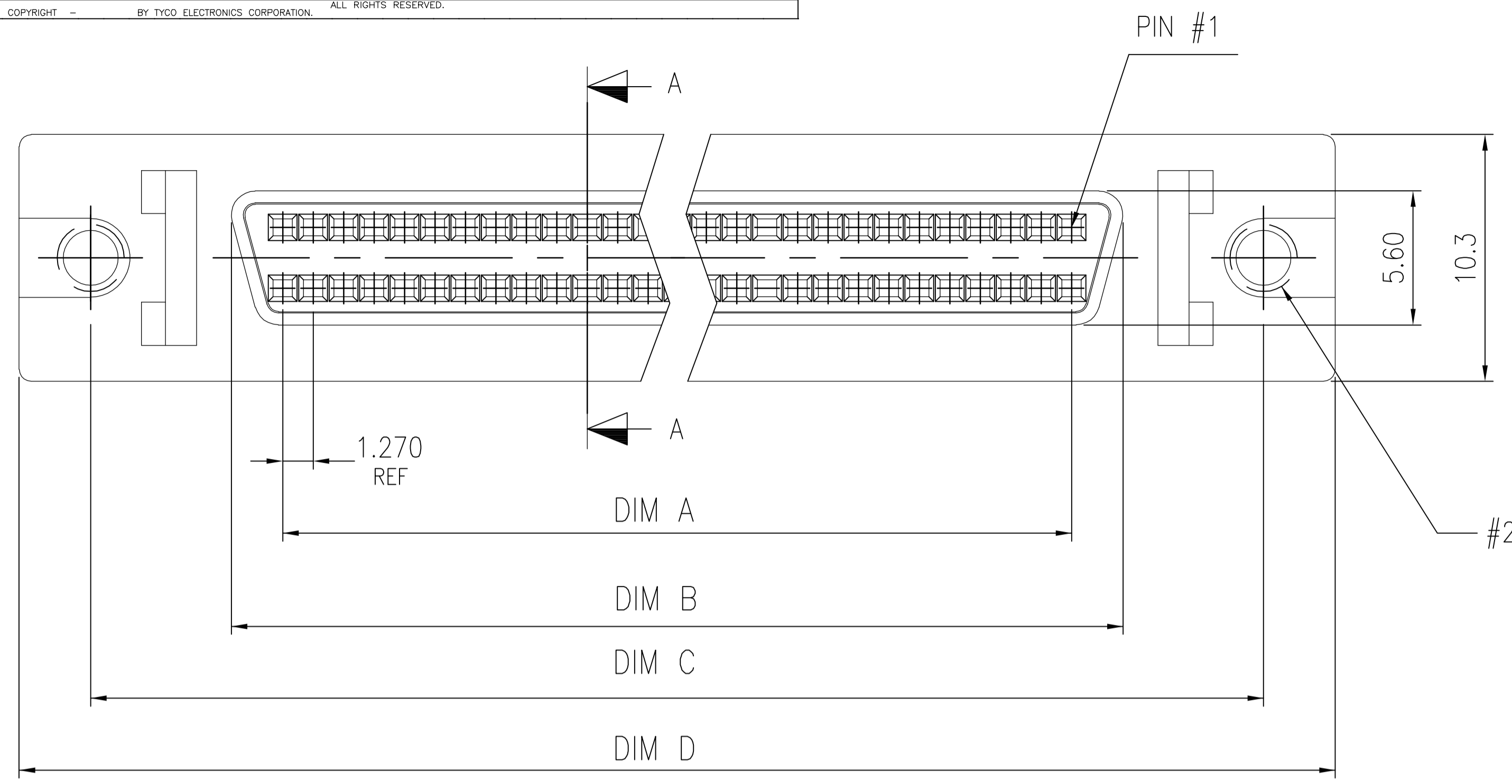
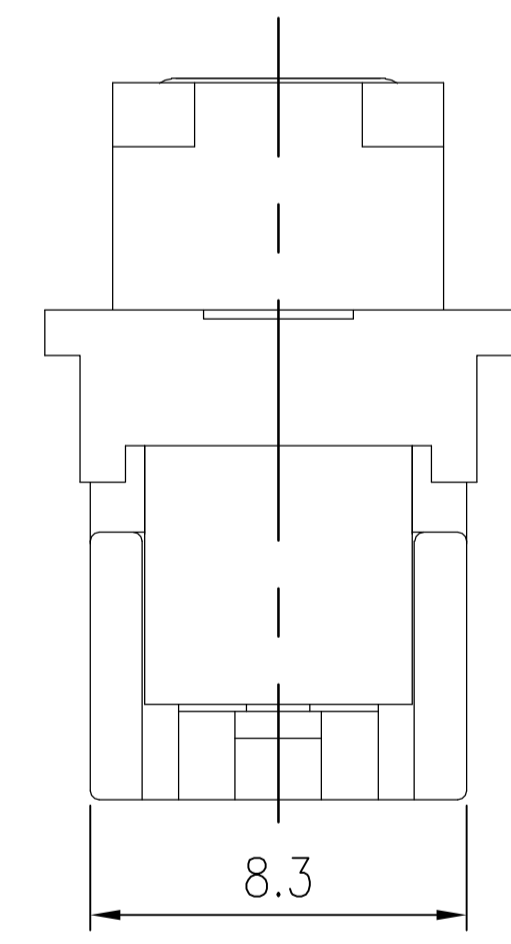
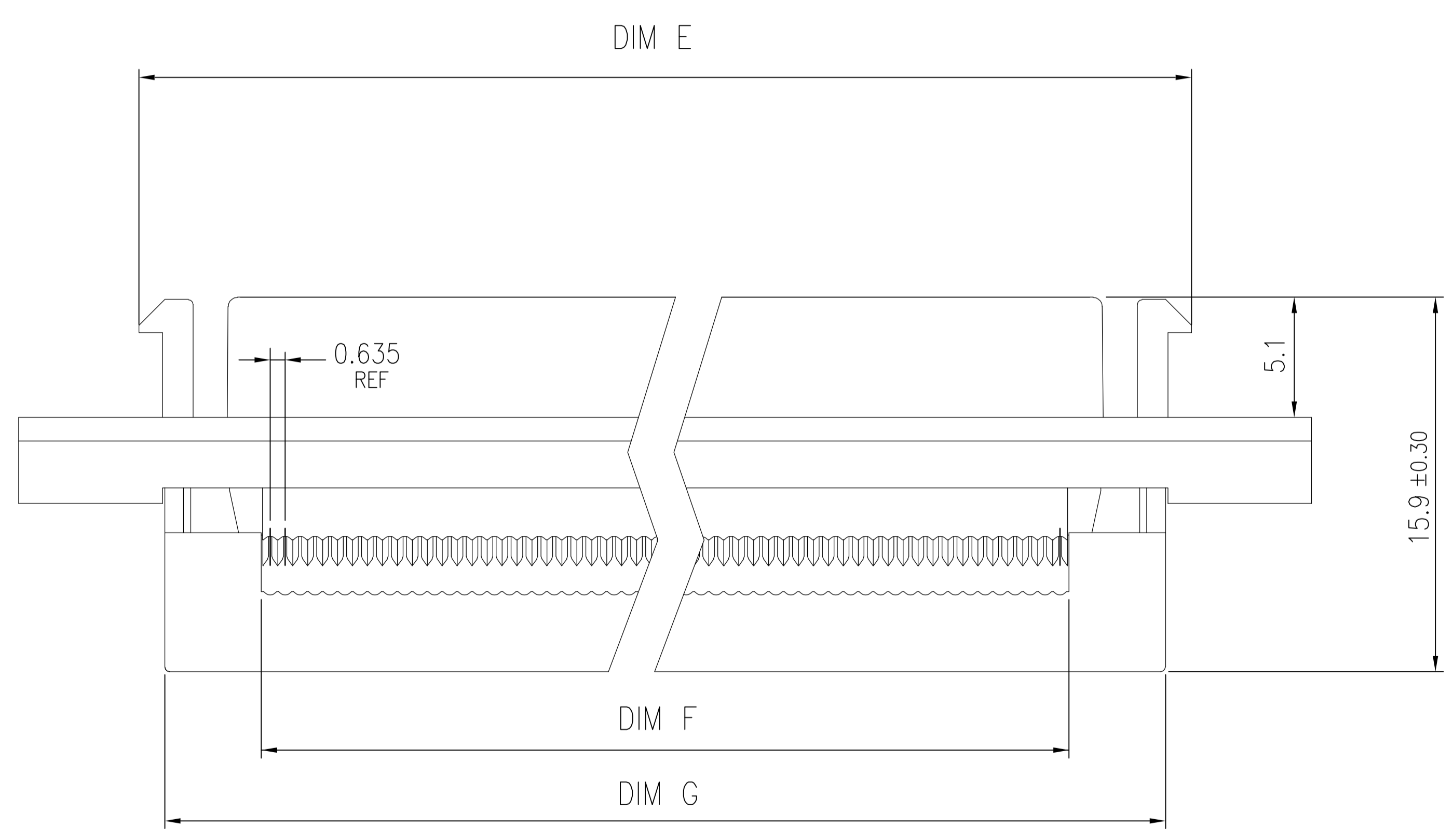


LOC		DIST		REVISIONS			
GP	00	REV	DATE	BY	APP'D		
B		REVISED PER EC	0513-0253-05	13DEC05	BL	JG	



SEC. A-A

#2-56 THREADED HOLE
2 PLCS



- ① HOUSING: PBT, 30% GLASS REINFORCED, UL94V-0, COLOR BLACK.
CONTACTS: PHOS. BRONZE.
BRACKET: ZINC ALLOY.
- ② CONTACTS: GOLD PLATED (SEE TABLE) ON MATING END, 1.27um [.000050in] MIN MATTE TIN ON TERMINATION AREA, ALL OVER 1.27um [.000050in] MIN NICKEL ON ENTIRE CONTACT.
BRACKET: 1.27um [.000050in] MIN NICKEL.
- ③ SPECIFICATIONS:
CURRENT RATING: 1A.
VOLTAGE RATING: 30V AC.
INSULATION RESISTANCE: 1000 MILLIOHMS MIN. AT 500V DC.
CONTACT RESISTANCE: 55 MILLIOHMS MAX.
DIELECTRIC WITHSTANDING VOLTAGE: 250V AC FOR 1 MINUTE.
CONTACT RETENTION FORCE: 600 gf MIN.
TOTAL INSERTION FORCE: 4 Kgf MAX. (FORCE DEPENDENT ON MATING CONNECTOR)
TOTAL WITHDRAWAL FORCE: 1.5 Kgf MAX. (FORCE DEPENDENT ON MATING CONNECTOR)
WIRE COVER RETENTION FORCE: 6 Kgf MIN.
OPERATION TEMPERATURE: -55°C TO 85°C.
- ④ FOR USE WITH 30 & 32 AWG FLAT RIBBON CABLE.
SELECTION OF COMPATIBLE RIBBON CABLE AND APPLICATION TOOLING FOR USE WITH THIS PRODUCT IS THE RESPONSIBILITY OF THE USER.
- ⑤ TYCO LOGO LOCATED ON THIS SURFACE.
- 6. SPECIFICATIONS SUBJECT TO CHANGE WITHOUT NOTICE.
CONTACT TYCO ELECTRONICS FOR THE LATEST SPECIFICATIONS.
- 7. PACKAGED IN TRAYS.

OBSOLETE	51.5	43.30	53.70	63.90	57.93	46.20	41.91	0.76um [.000030in]	68	5390379-7
	40.07	31.87	42.27	52.47	46.50	34.77	30.48	0.76um [.000030in]	50	5390379-5
	DIM G	DIM F	DIM E	DIM D	DIM C	DIM B	DIM A	CONTACT FINISH	NO OF POS	PART NUMBER

THIS DRAWING IS A CONTROLLED DOCUMENT.

DIMENSIONS: mm	TOLERANCES UNLESS OTHERWISE SPECIFIED:	0 PLC ± -	1 PLC ± 0.15	2 PLC ± 0.10	3 PLC ± -	4 PLC ± -	ANGLES ± -
----------------	--	-----------	--------------	--------------	-----------	-----------	------------

DRAWN: J. GERACE	26JAN05		Tyco Electronics Corporation
CHK: S. SHUEY	26JAN05		Harrisburg, Pa 17105-3608
APPROVED: M. WALMSLEY	26JAN05	NAME:	RECEPTACLE ASSEMBLY, LATCHES, 0.64[.025] CENTERLINE, AMPLIMITE 1.27[.050] SERIES
PRODUCT SPEC:	③	APPLICATION SPEC:	④
MATERIAL: ①	FINISH: ②	WEIGHT:	SIZE: A1
CUSTOMER DRAWING		SCALE: 1:1	SHEET 1 OF 1

单击下面可查看定价，库存，交付和生命周期等信息

[>>TE Connectivity\(泰科\)](#)