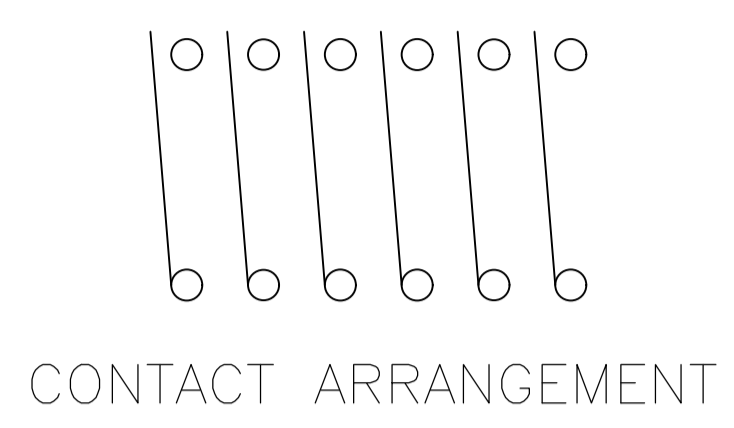
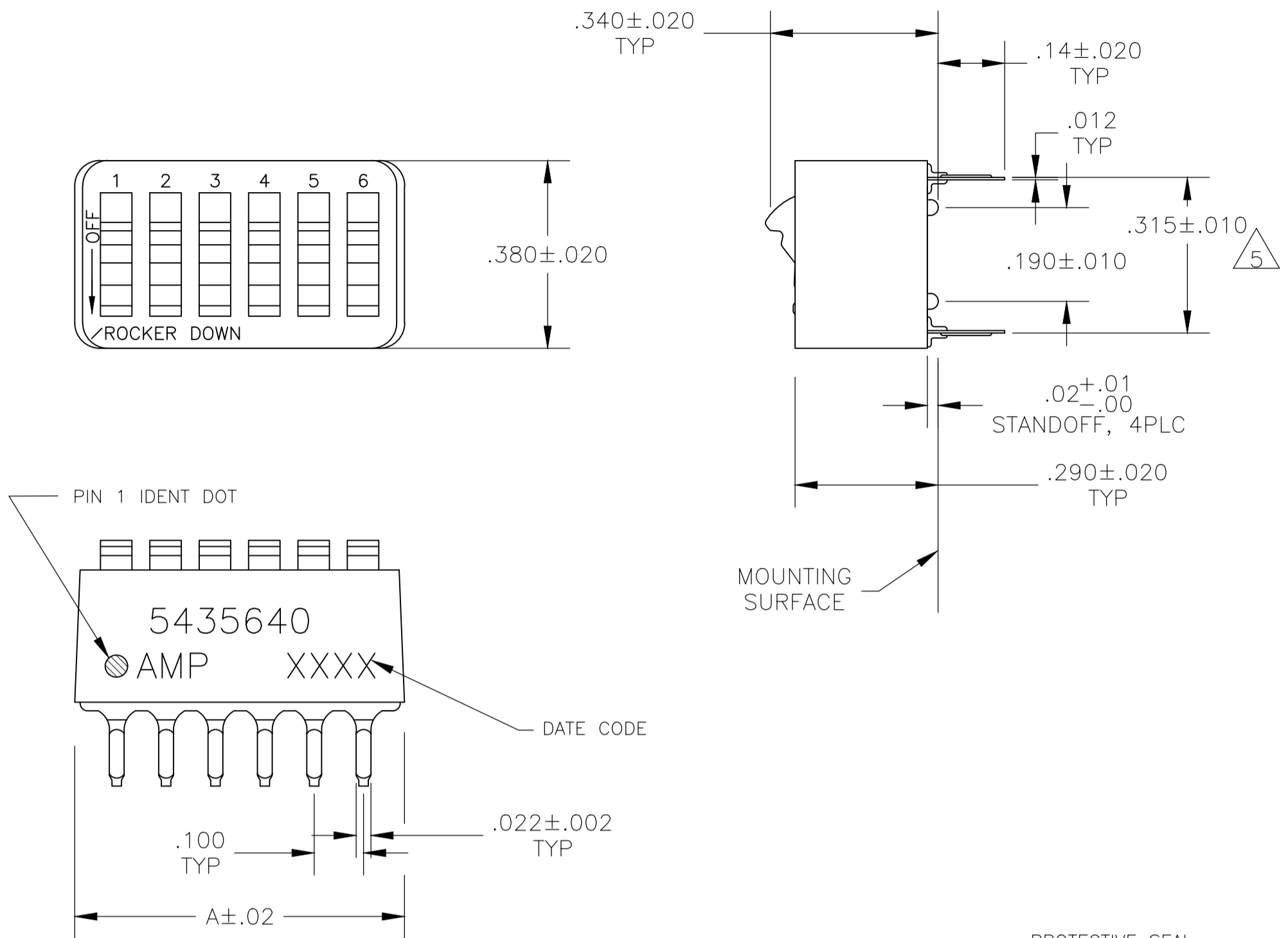


REVISIONS				
P	LTR	DESCRIPTION	DATE	APPD
C		ECO-20-004897	24AUG2020	SB JB



- 1 FOR ADDITIONAL SPECIFICATIONS SEE AMP PRODUCT SPEC 108-7532.
- 2 SWITCH SHOWN IN OPEN POSITION.
- 3 ALL CHARACTERS AND ROCKERS ARE WHITE, HOUSING IS BLUE.
- 4 LASER MARKING WILL VARY ON 2 AND 3 POSITION SIDES DUE TO SPACE RESTRICTIONS.
- 5 .315 DIMENSION APPLIES AT TERMINAL TIPS. TERMINALS ARE .300+.010 -.000 AT MOUNTING SURFACE.
- 6 STRIPPABLE TRANSPARENT SEAL, SEE FIG 1.
- 7 STRIPPABLE TRANSPARENT SEAL, SEE FIG 1.
- 8 MATERIAL: HOUSING & ROCKERS- POLYESTER CONTACTS & SOLDER LEAD-COPPER ALLOY
- 9 FINISH: CONTACTS- GOLD OVER NICKEL SOLDER LEAD- TIN OVER NICKEL
- 10 ALL MATERIALS AND FINISHES SHALL COMPLY WITH EU DIRECTIVE 2002 /95/EC OF 27JAN2003(ROHS).
- 11 OBSOLETE PARTS: OBSOLETE CIS STREAMLINING PER D.RENAUD/D.SINISI
- 12 MARKS WILL BE ADDED BY LASER MARK PROCESS.

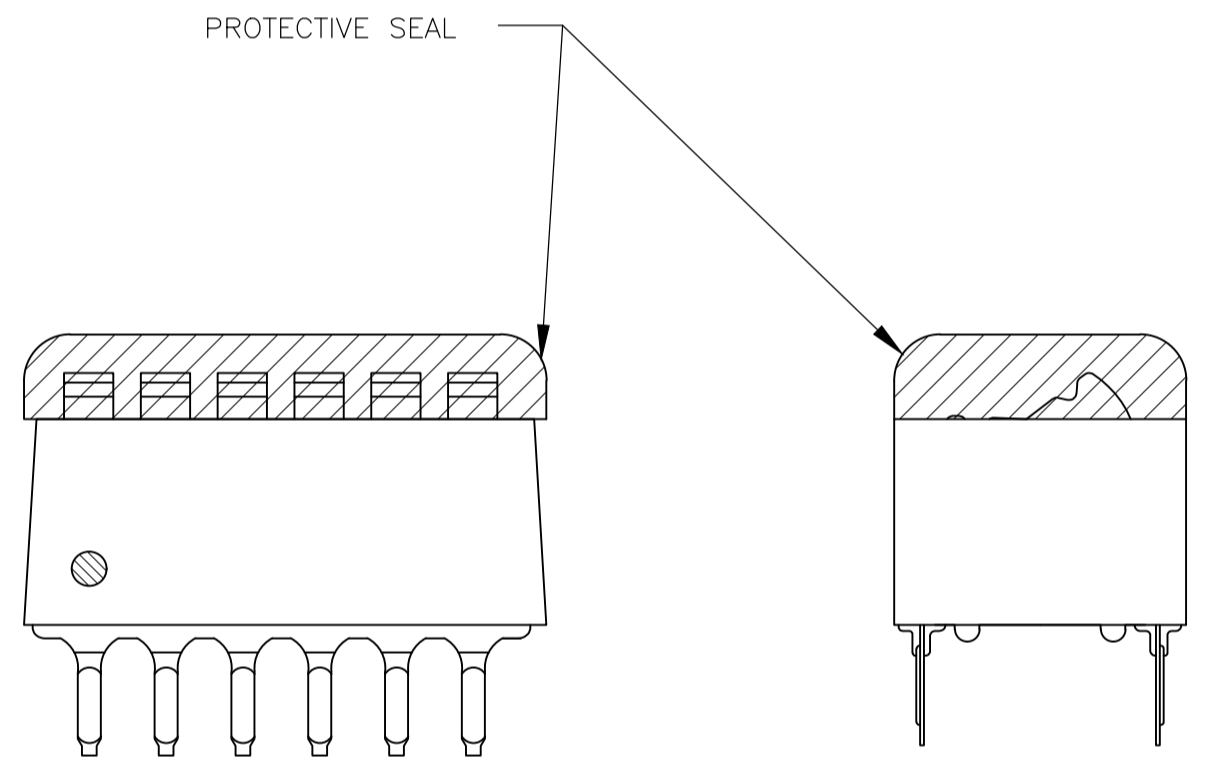


FIG 1

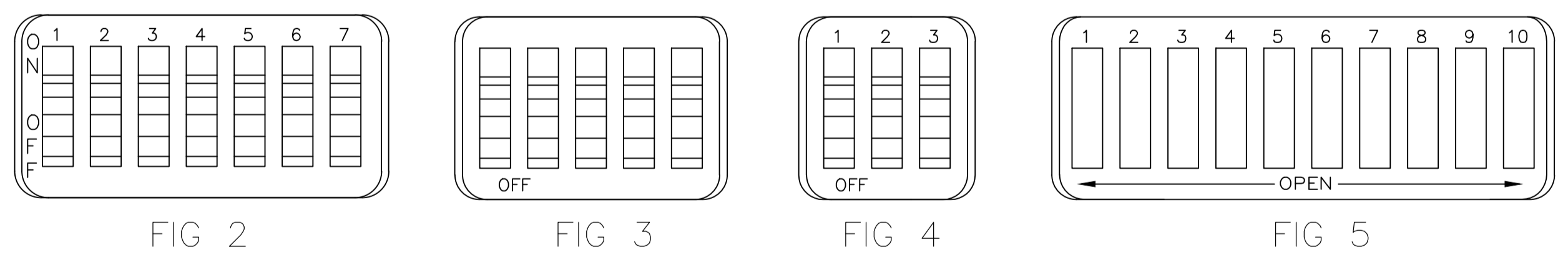


FIG 2

FIG 3

FIG 4

FIG 5

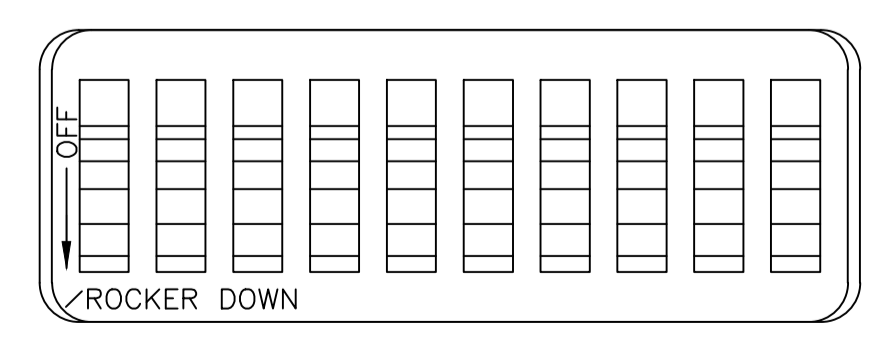


FIG 6

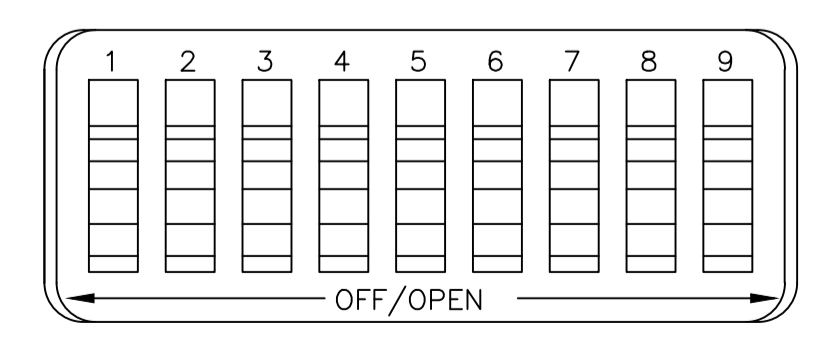


FIG 7

MARKING	FIG	1.08	10	6-5435640-1
OBSOLETE	FIG 6	.58	5	6-5435640-0
		.48	4	5-5435640-9
		.88	8	5-5435640-8
OBSOLETE	FIG 7	.98	9	5-5435640-7
		.68	6	5-5435640-6
		.58	5	5-5435640-5
OBSOLETE	FIG 5	.48	4	5-5435640-4
		.88	8	5-5435640-3
OBSOLETE	FIG 2	1.08	10	5-5435640-1
		.88	8	5-5435640-0
OBSOLETE	FIG 3	.88	8	4-5435640-9
		.58	5	4-5435640-8
OBSOLETE	NONE	1.08	10	4-5435640-7
		1.28	12	4-5435640-3
AS SHOWN	AS SHOWN	1.08	10	4-5435640-1
		.98	9	4-5435640-0
		.88	8	3-5435640-9
		.78	7	3-5435640-8
		.68	6	3-5435640-7
		.58	5	3-5435640-6
		.48	4	3-5435640-5
		1.28	12	3-5435640-2
		.38	3	3-5435640-0
		.28	2	2-5435640-9
AS SHOWN	AS SHOWN	1.08	10	5435640-7
		.98	9	5435640-6
		.88	8	5435640-5
		.68	6	5435640-4
		.58	5	5435640-3
		.48	4	5435640-2
AS SHOWN	AS SHOWN	.78	7	5435640-1
		TOP MARKING	A	NO OF POSN

THIS DRAWING IS A CONTROLLED DOCUMENT.

DIMENSIONS: INCHES

TOLERANCES UNLESS OTHERWISE SPECIFIED:

0 PLC	± .005
1 PLC	± .005
2 PLC	± .005
3 PLC	± .005
4 PLC	± .005
ANGLES	± .005

MATERIAL: SEE NOTES

FINISH: SEE NOTES

WEIGHT: --

CUSTOMER DRAWING

DIN: BSV 08JAN2005

CIR: M SARVER 13SEP05

APVD: M SARVER 13SEP05

NAME: SWITCH ASSY, DIP, TYPE C, 7100 SERIES, SPST, STANDARD

SIZE: A1

SCALE: 4:1

SHEET: 1 OF 1

REV: C

STE TE Connectivity

单击下面可查看定价，库存，交付和生命周期等信息

[>>TE Connectivity\(泰科\)](#)