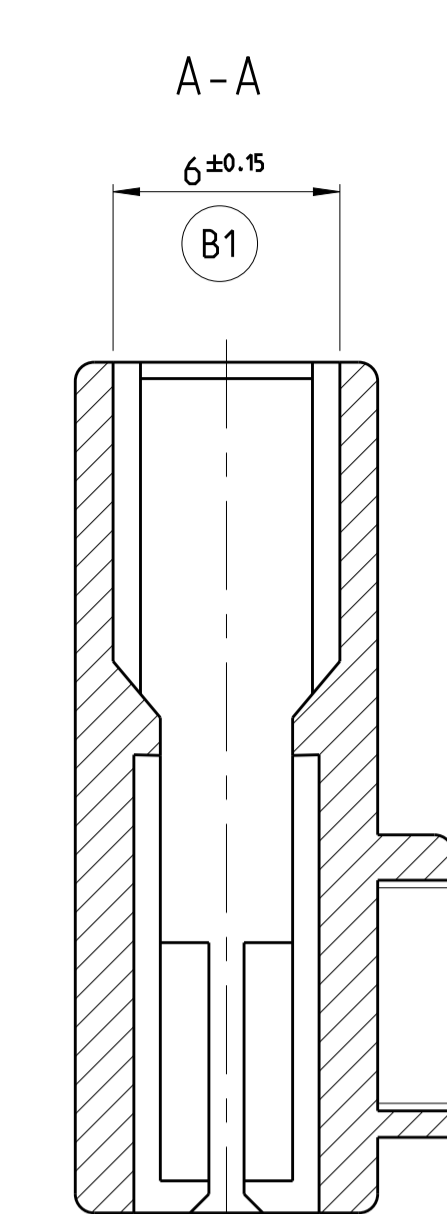
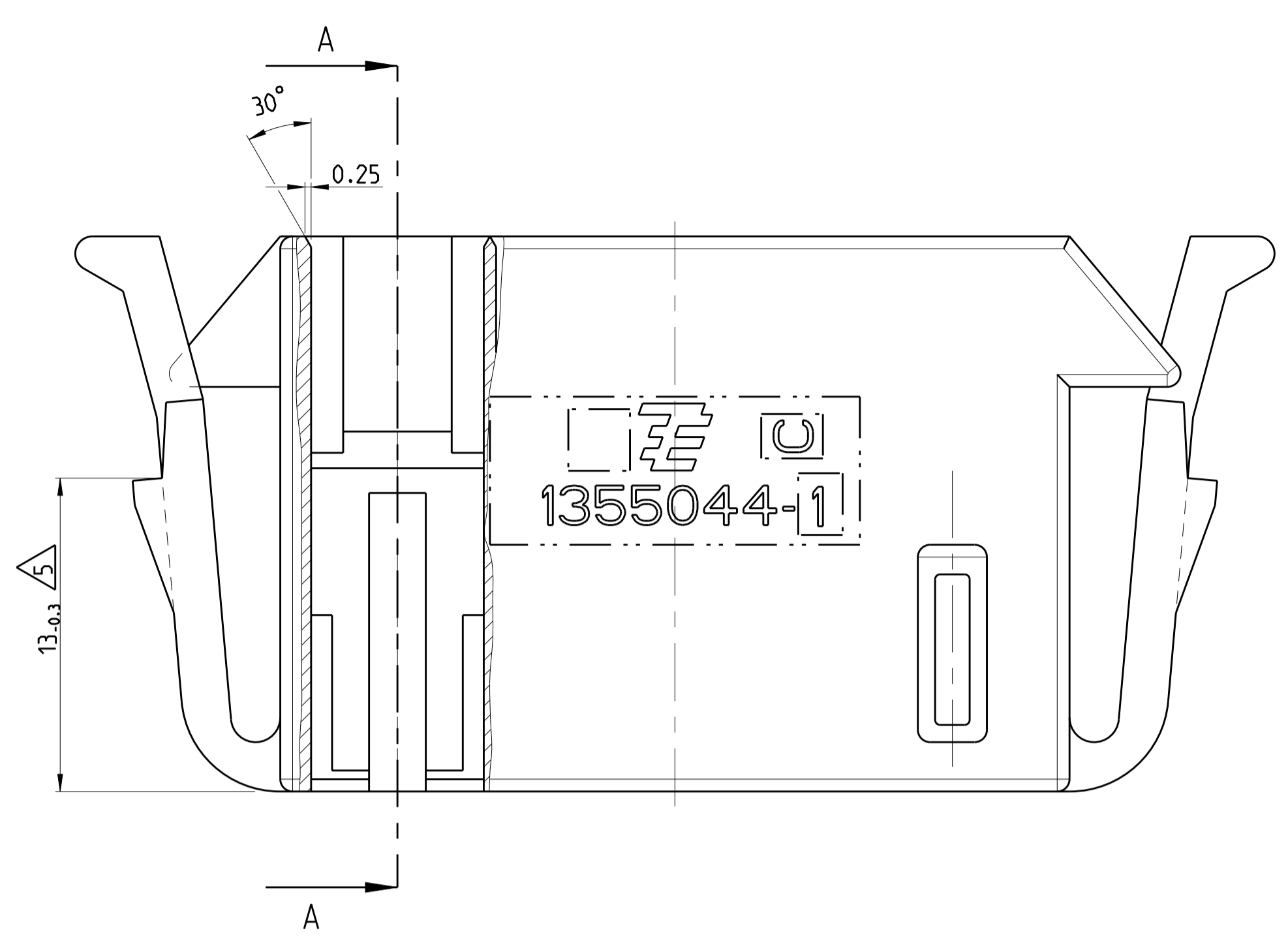
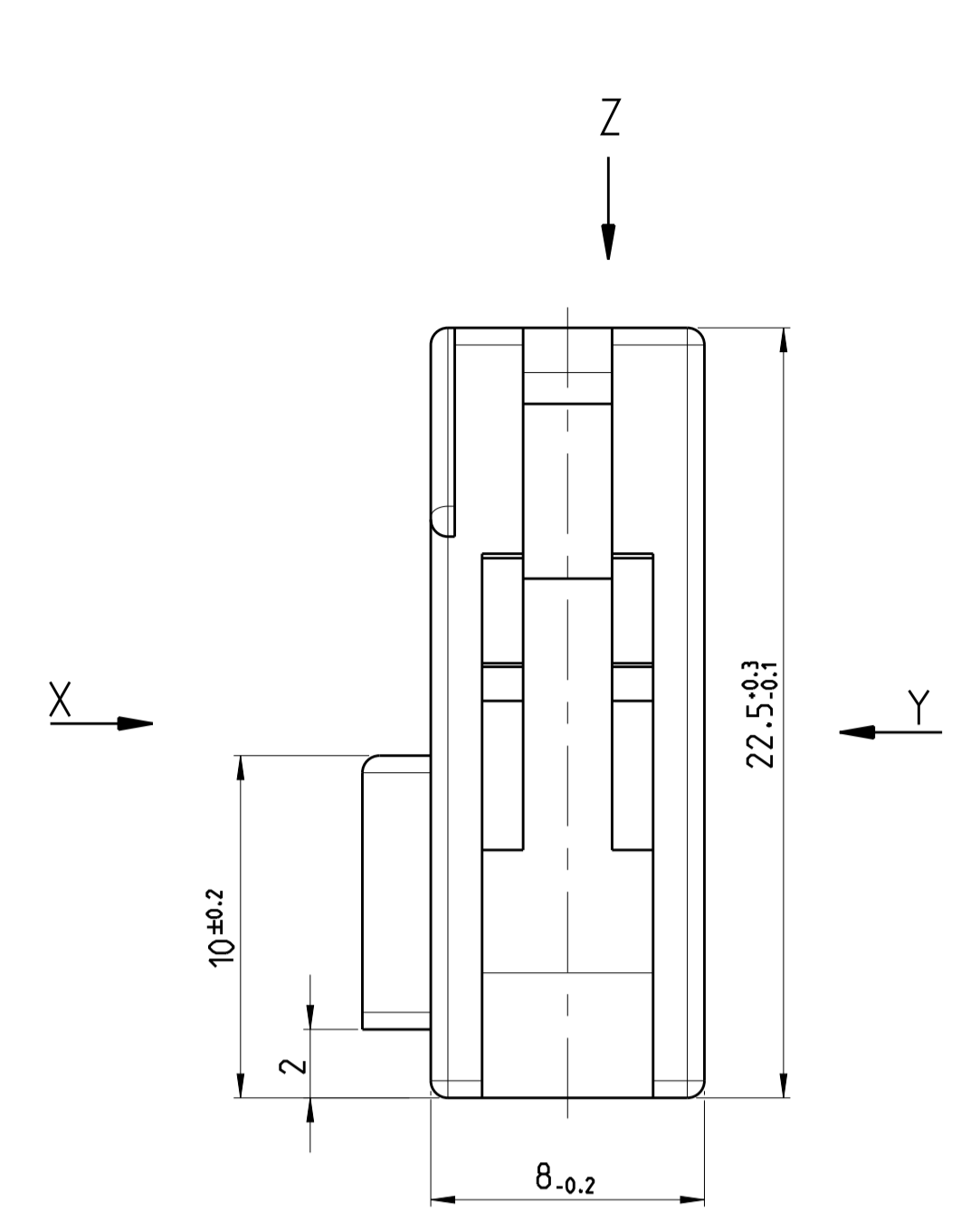


LOC	DIST	REVISIONS					
A1	-	P	LTR	DESCRIPTION	DATE	DWN	APVD
C				PRO-E/ CONTACT CAV. SEE ECR-10-003957	18MAR2010	GS	FJT
C1				CHAMFER CORRECTED IN ZONE C6	17MAY2010	GS	FJT
C2				10±0.2 REF/ SAV. CORES ADDED	06SEP2010	GS	FJT
C3				FOR DIM 26. TOLERANCE IS CHANGED	02AUG2019	PK	ACH

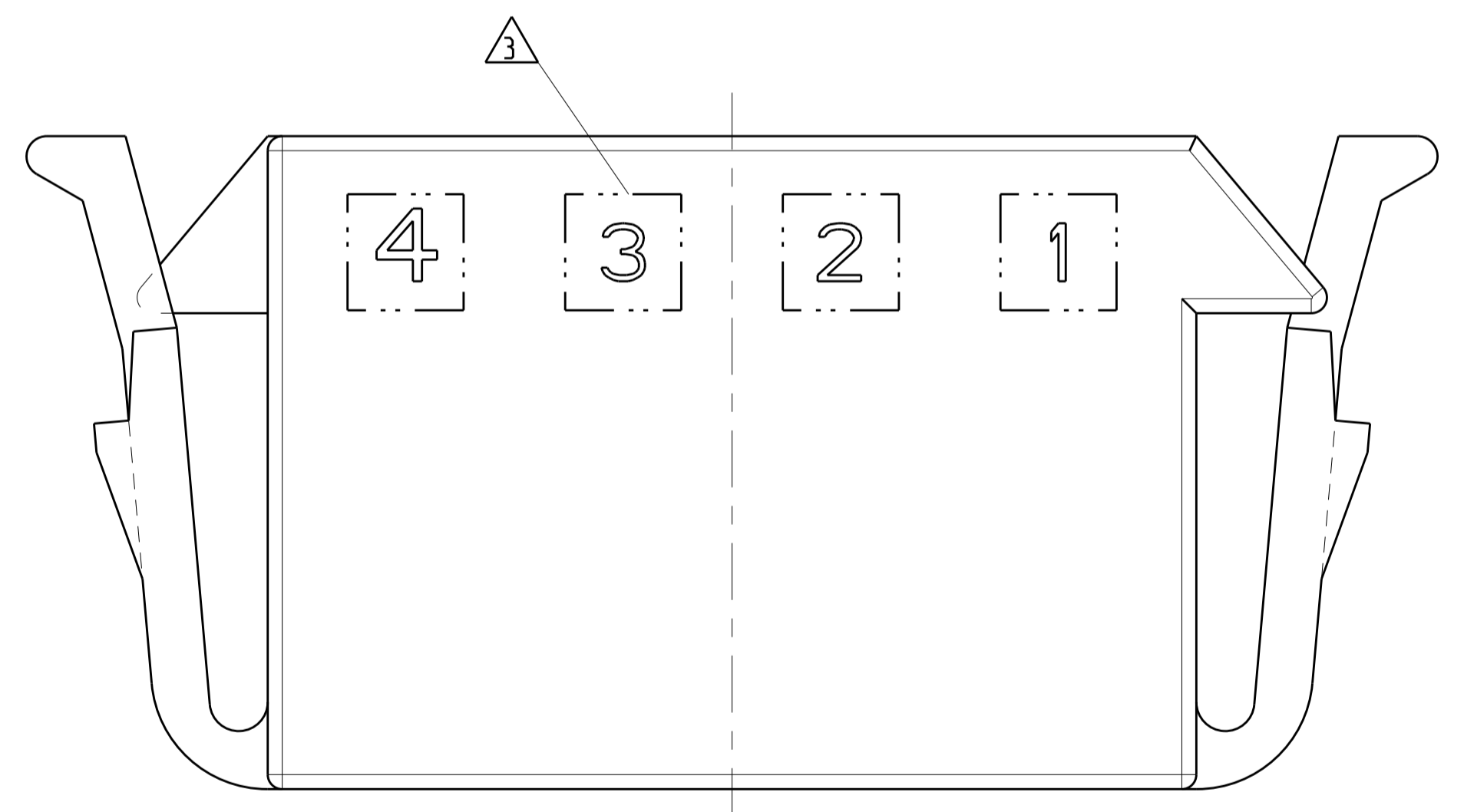
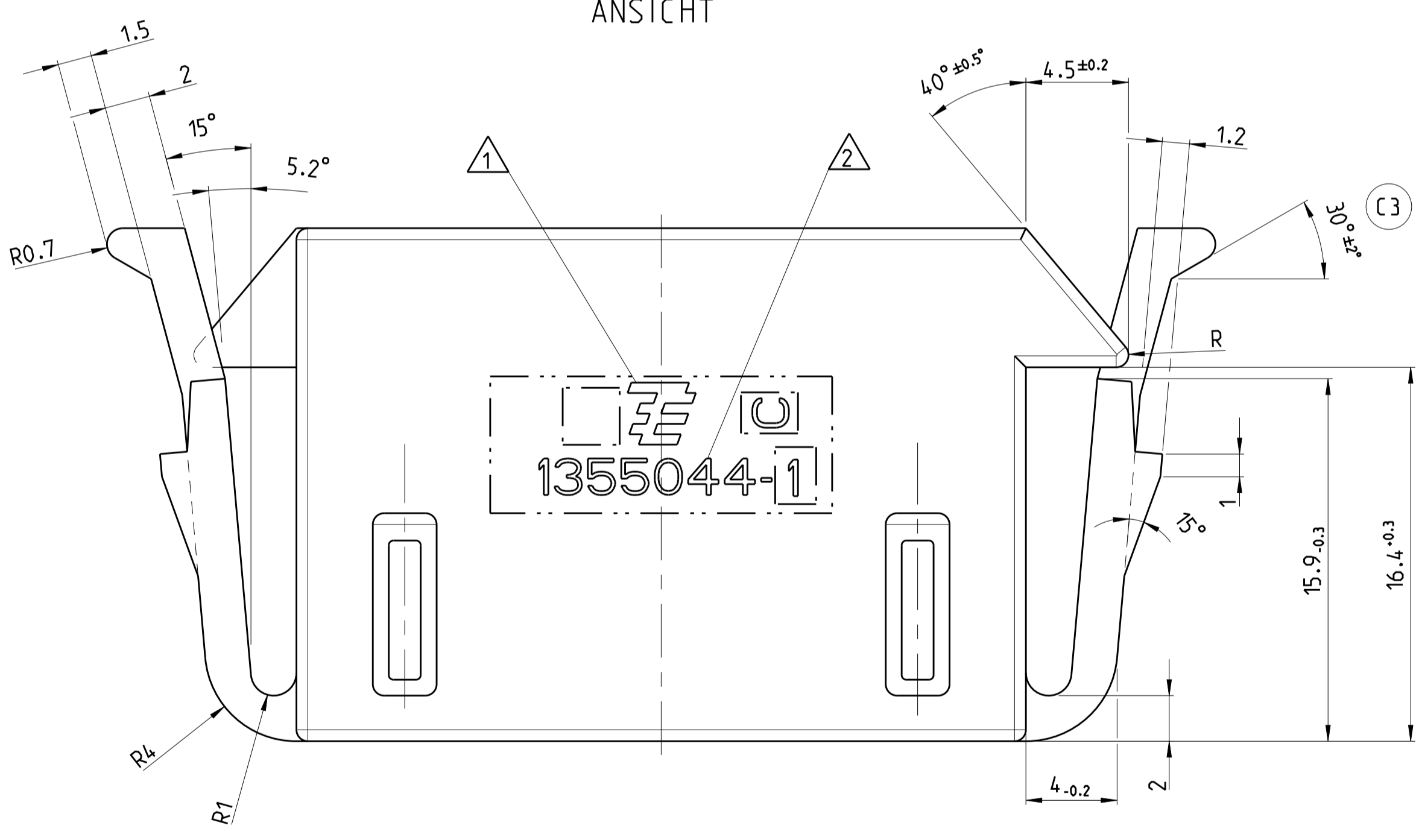
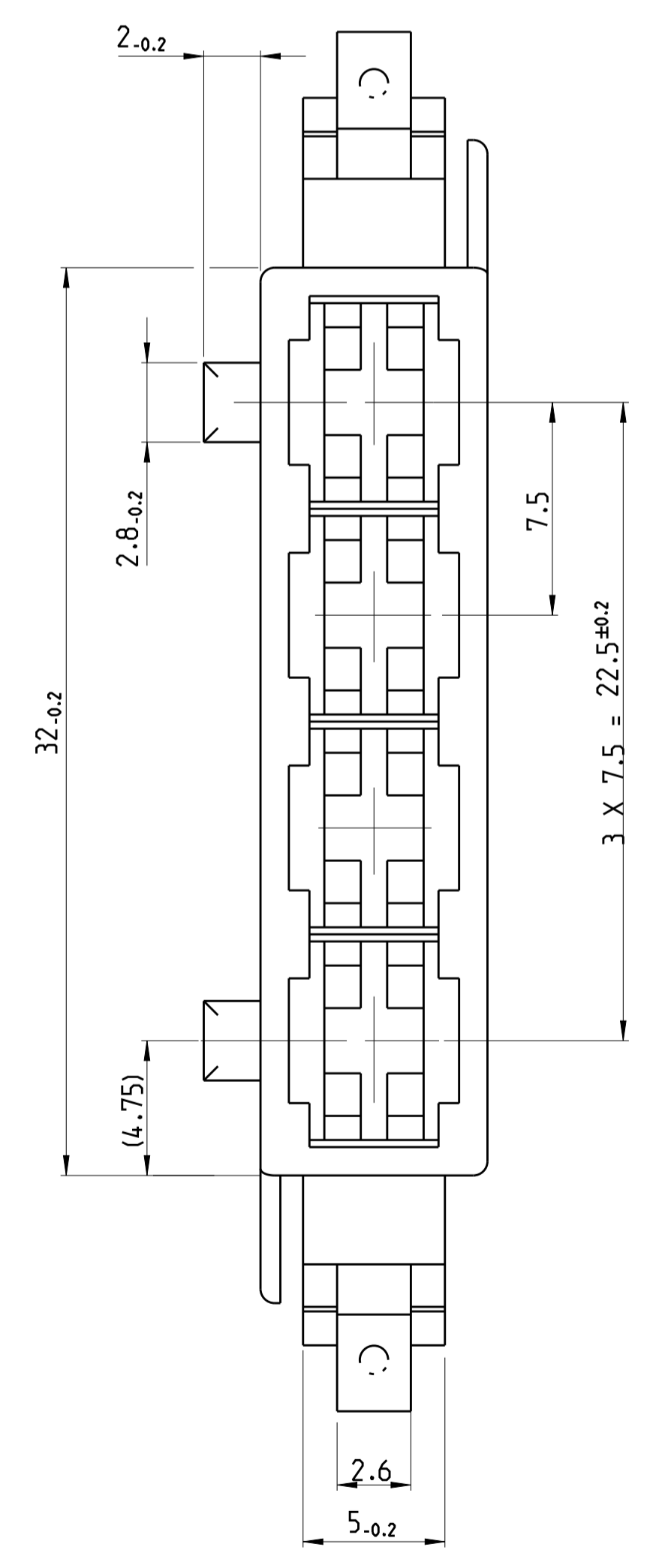


- NOTES
- 1 TE-LOGO
 - 2 TE ORDER-NO.
 - 3 CAVITY MARKING
 - 4 USED WITH CONTACTS ACC. TO TE-PRODUCT-GROUP-DRAWING 1355049
 - 5 DIMENSION MEASURED IN 0° POSITION OF LOCKING LATCH
 - 6 DESIGN OF COUNTER-PART IN ACCORDANCE WITH INTERFACE-DRAWING 114-18560
- BEMERKUNGEN
- 1 TE-LOGO
 - 2 BESTELLNUMMER
 - 3 KAMMER-NUMMIERUNG
 - 4 VERWENDET MIT KONTAKTEN NACH TE PRODUKT-GRUPPEN-ZEICHNUNG 1355049
 - 5 MASSE SIND ZU MESSEN BEI 0° RASTARMSTELLUNG
 - 6 AUSFUEHRUNG DER GEGENSEITE IN UEBEREINSTIMMUNG MIT SCHNITTSTELLENZEICHNUNG 114-18560

VIEW Z ANSICHT

VIEW X ANSICHT

VIEW Y ANSICHT



CONTACTS KONTAKTE	TE ORDER NO. (STRIP) TE BEST.-NR. (BAND)	TE ORDER NO. (LP) TE BEST.-NR. (EINZEL)	WIRE RANGE DRAHTBEREICH	MATERIAL	FINISH AUSFUEHRUNG	APPLICATION TOOLING VERARBEITUNGSWERKZEUG
STANDARD POWER TIMER	964328-1	964327-1	>2.5-4.0mm ²	CuFe2	PRE TIN PLATED VORVERZINNT	HAND TOOL 169400-0 (HANDZANGE) DIE SET 539615-1 (MATRIZENSATZ)
	964326-1	964325-1	>1.0-2.5mm ²	CuFe2	PRE TIN PLATED VORVERZINNT	
	964324-1	964323-1	0.5-1.0mm ²	CuFe2	PRE TIN PLATED VORVERZINNT	
	964322-1	964321-1	0.2-0.5mm ²	CuFe2	PRE TIN PLATED VORVERZINNT	

CUSTOMER PART NO.	TE PART NO.	REV.	PCS.	MATERIAL	SURFACE/COLOR	DESCRIPTION	ITEM NO.	DIMENSIONS: mm	TOLERANCES UNLESS OTHERWISE SPECIFIED:	MATERIAL	FINISH	WEIGHT	CUSTOMER DRAWING	KUNDENZEICHNUNG	SCALE	SHEET	OF	REV.
-	1355044-1	C	-	PA 66	BLACK/SCHWARZ	HOUSING, 4POSN/GEHAUESE, 4POL	1		0 PLC ±0.15 1 PLC ±0.15 2 PLC ± 3 PLC ± 4 PLC ± ANGLES ± FINISH	PA 66	BLACK/SCHWARZ	4.18g	A1	00779	1/3	1	1	3

单击下面可查看定价，库存，交付和生命周期等信息

[>>TE Connectivity\(泰科\)](#)