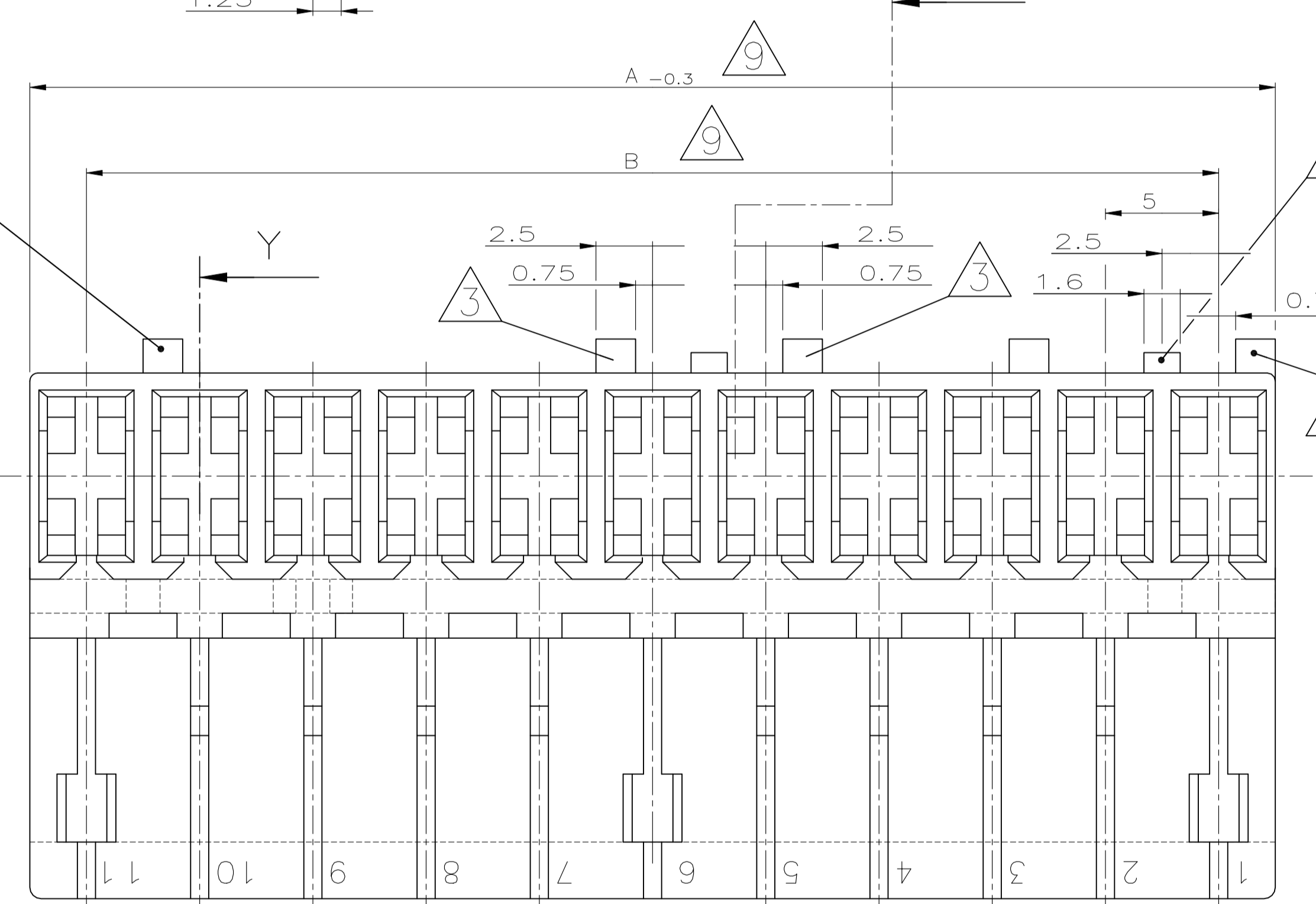
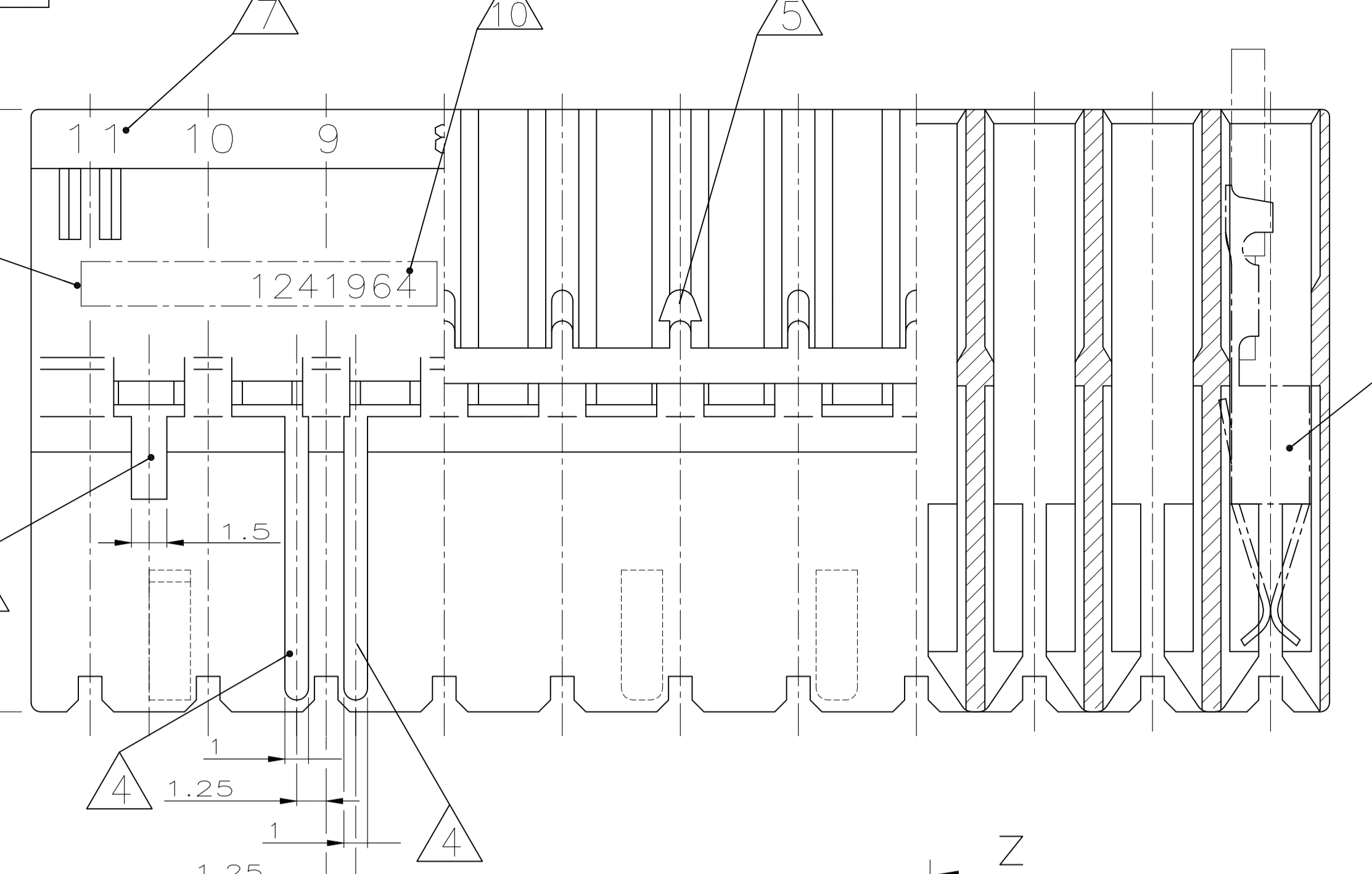
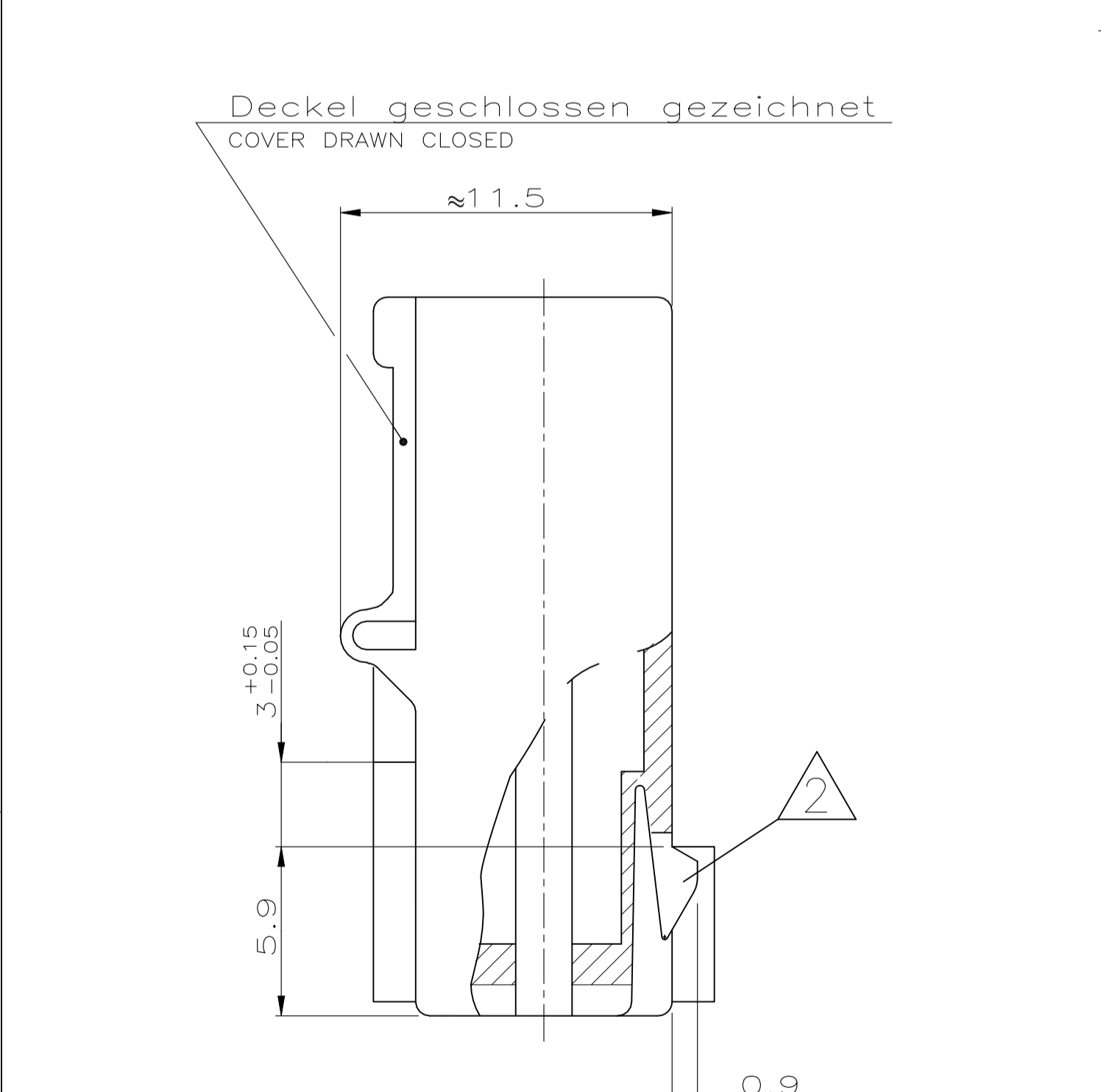
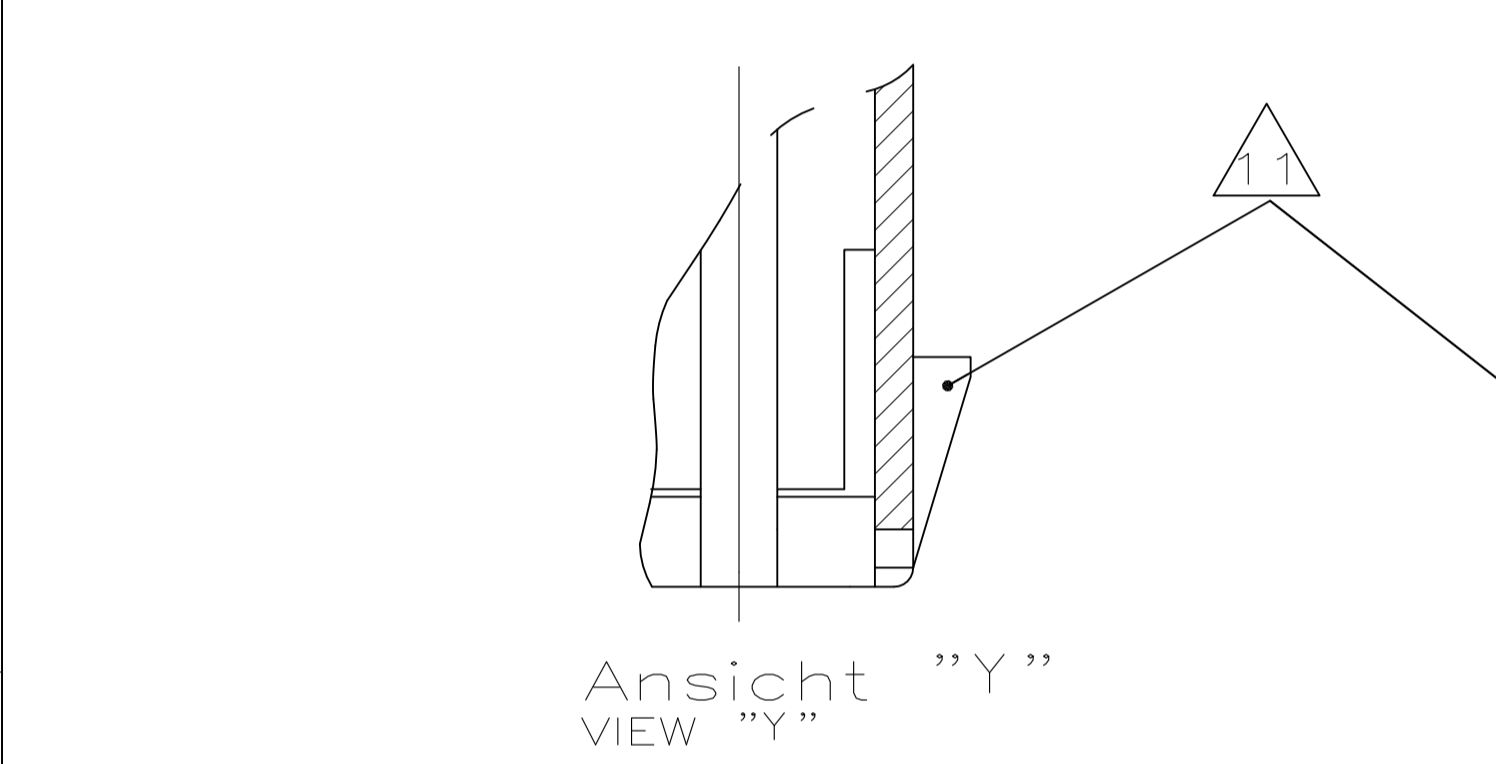
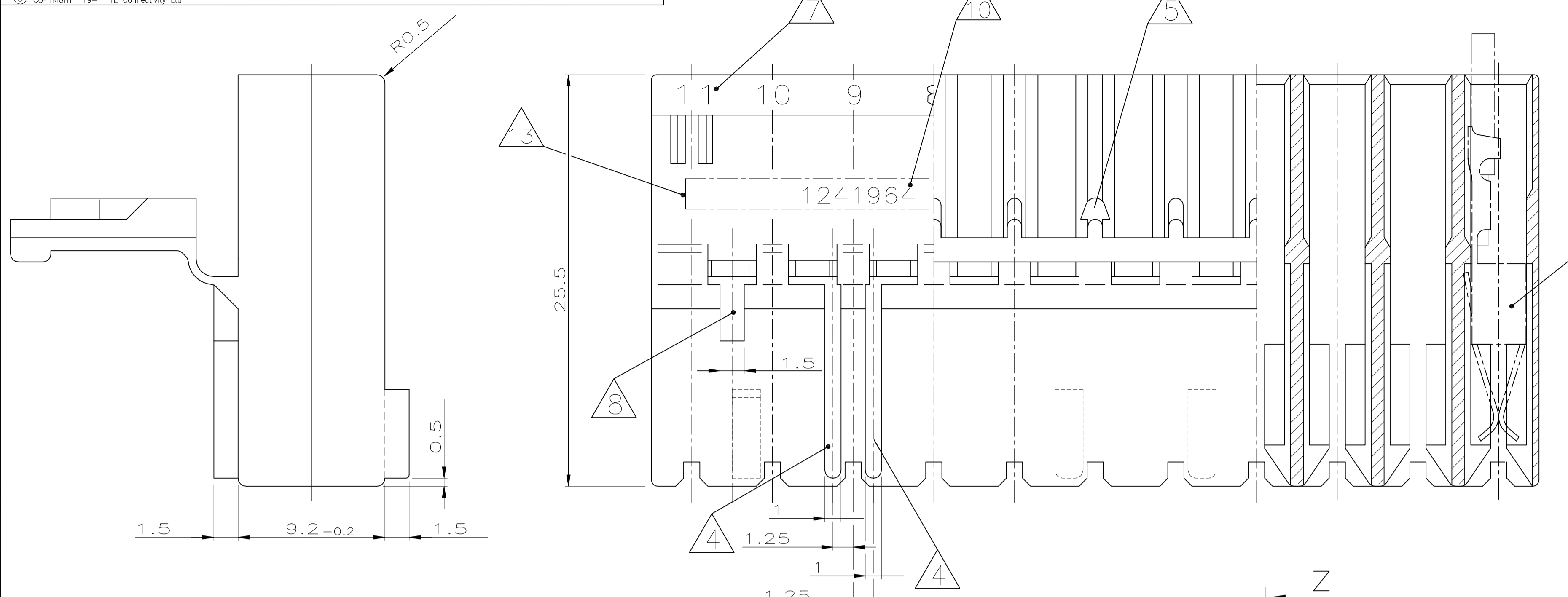


REVISIONS				
NO.	DATE	DESCRIPTION	BY	APP'D
A14	30AUG2021	ECR-21-114837	PJ	FL



Bemerkungen
NOTES

- 1 Kammer geeignet für AMP Timer-Kontakte: PN 926965
CAVITY SUITABLE TO AMP TIMER-CONTACTS: PN 926973
PN 926005
PN 926006
PN 927833
PN 927837
- 2 Rasthaken zwischen Kammer Nr. ... (siehe Blatt 2 von 2)
LOCKING LATCH BETWEEN CAVITY NO. ... (SEE SHEET 2 OF 2)
- 3 Kodierrippen nach unten (Lage "c") oder oben (Lage "d")
versetzt, bei Kammer Nr. ... (siehe Blatt 2 von 2)
KEYING RIB POSITION "c" OR POSITION "d",
AT CAVITY NO. ... (SEE SHEET 2 OF 2)
- 4 Polarisierungsrippen durchgehend bis Scharnier, nach unten (Lage "a")
oder oben (Lage "b") versetzt, bei Kammer Nr. ... (siehe Blatt 2 von 2)
POLARIZATION RIB GO THROUGH TO HINGE, POSITION "a" OR
"b", AT CAVITY NO. ... (SEE SHEET 2 OF 2)
- 5 Verrastung für Deckel bei Kammer Nr. ... (siehe Blatt 2 von 2)
LOCKING DEVICE FOR COVER AT CAVITY NO. ... (SEE SHEET 2 OF 2)
- 6 Kodierrippen bei erster Kammer, Lage "c", und letzter Kammer, Lage "d",
bündig mit Gehäuseaußenkante
KEYING RIBS AT THE FIRST CAVITY, POSITION "c", AND THE LAST CAVITY, POSITION "d",
FLUSH TO THE EDGE OF THE CONNECTOR
- 7 Kammernummer
CAVITY NUMBER
- 8 Tiefenanschlag zwischen Kammer Nr. 1 und 2, ebenfalls
zwischen der letzten und vorletzten Kammer
MATING STOP BETWEEN CAVITY NO. 1 AND 2, ALSO
BETWEEN THE LAST AND THE LAST BUT ONE CAVITY
- 9 Maß A und Maß B siehe Blatt 2 von 2
DIMENSION A AND DIMENSION B SEE SHEET 2 OF 2
- 10 TE PART NUMBER (OPTIONAL)
- 11 Angeschrägte Kodierrippen nach unten (Lage "c") oder oben (Lage "d")
versetzt, bei Kammer Nr. ... (siehe Blatt 2 von 2)
SWAGED KEYING RIB POSITION "c" OR POSITION "b",
AT CAVITY NO. ... (SEE SHEET 2 OF 2)
- 12 Material entspricht den Anforderungen der EN 60335 (incl. glow wire test 750°C,
ohne Flamme
MATERIAL CORRESPONDS TO REQUIREMENT EN 60335 (INCL.GLOW WIRE TEST 750°C,
NO FLAME)
- 13 AREA FOR TYCO ELECTRONICS LOGO ACC. TO SPEC. 202-36
Bereich für TYCO ELECTRONICS Logo nach Spec. 202-36
- 14 Passender TE Gegenstecker: (siehe Stückliste)
MATED WITH TE CONNECTOR: (SEE PARTS LIST)
- 15 Generell passende Flachsteckerwanne siehe RAST5 Vorgabe
GENERAL SUITABLE TAB HEADER HOUSING SEE RAST5 PERFORMANCE
- 16 Leiterplattenanschluß siehe Zeichnung 88-9935-2
CONNECTION TO THE PC BOARD SEE DRAWING 88-9935-2
- 17 PRELIMINARY PART NOT RELEASED FOR PRODUCTION
- 18 MATERIAL ACC. TO UL94-V0 AND GWEP2
750°C NO FLAME

9 DOUBLE SOURCE RESIN: ALTERNATIVE RESIN UNDER APPROVAL

Tabelle mit Ausführungsvarianten
und Bestellnummern auf Blatt 2 von 2
LIST WITH DIFFERENT STYLINGS AND
PARTNUMBERS SEE SHEET 2 OF 2

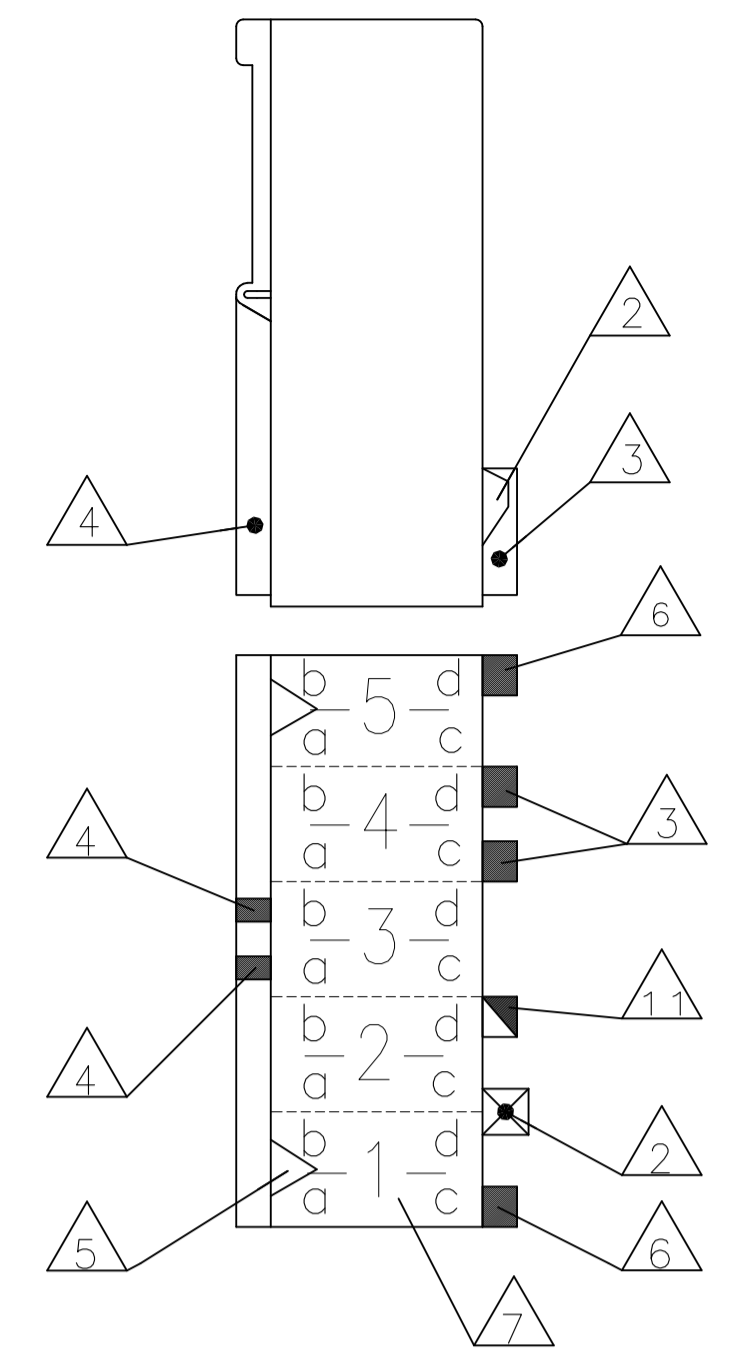
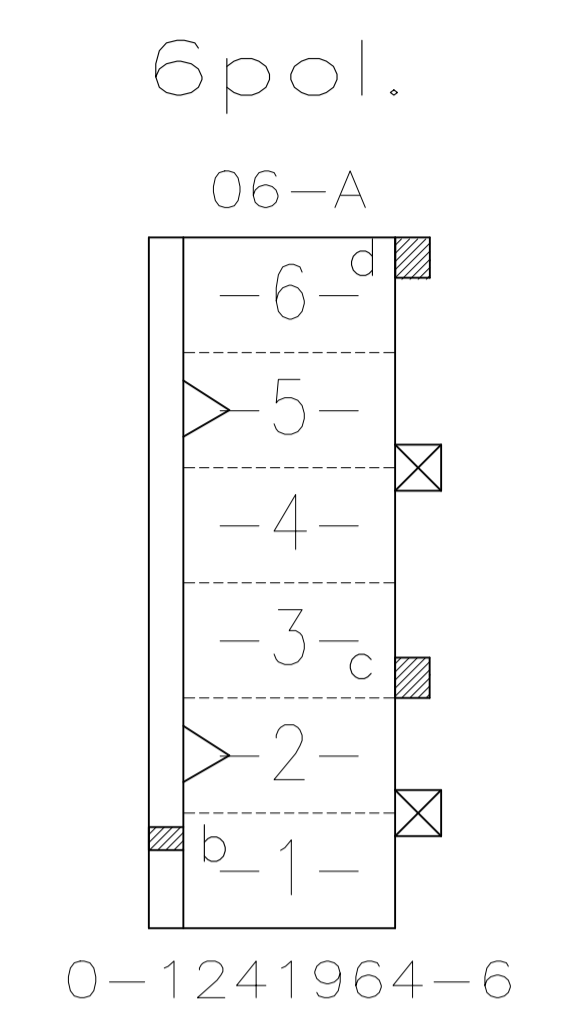
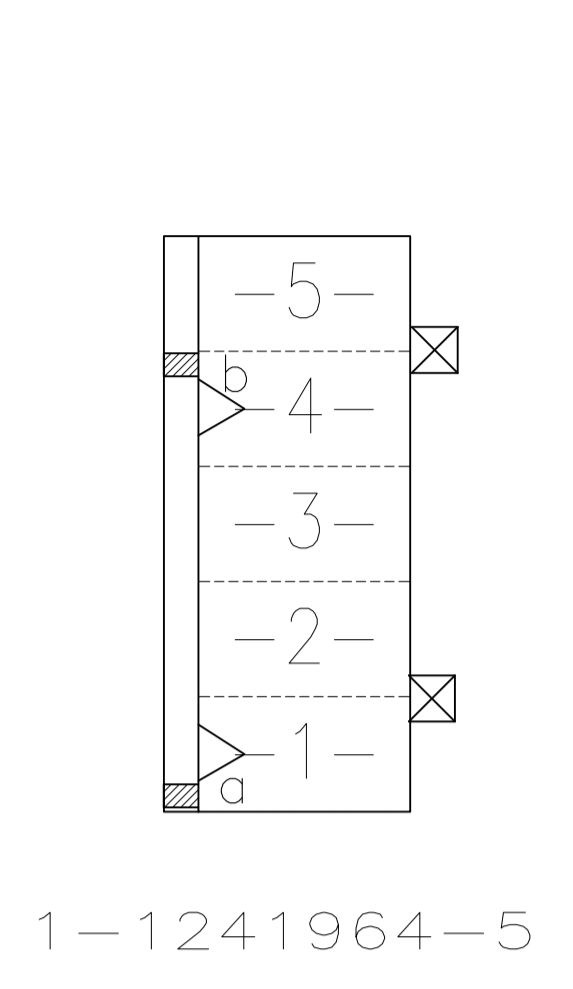
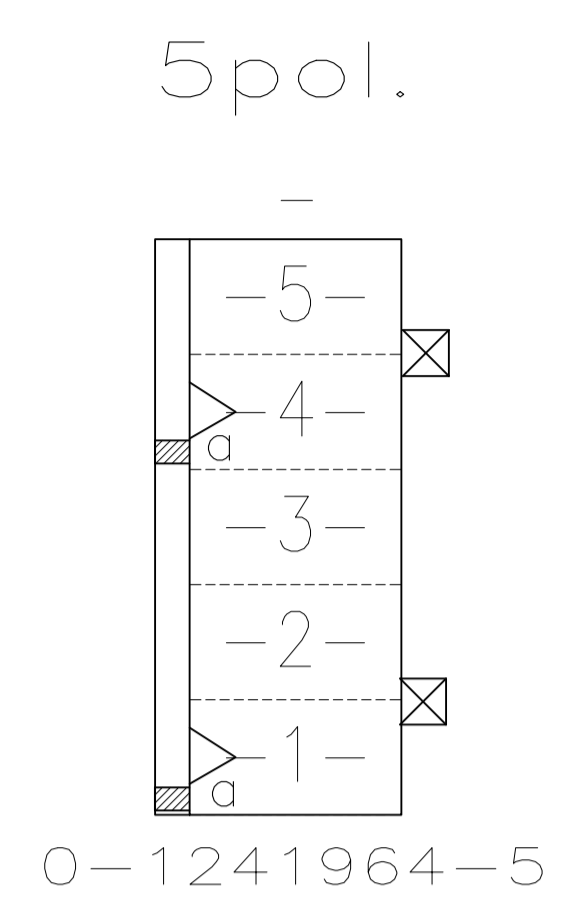
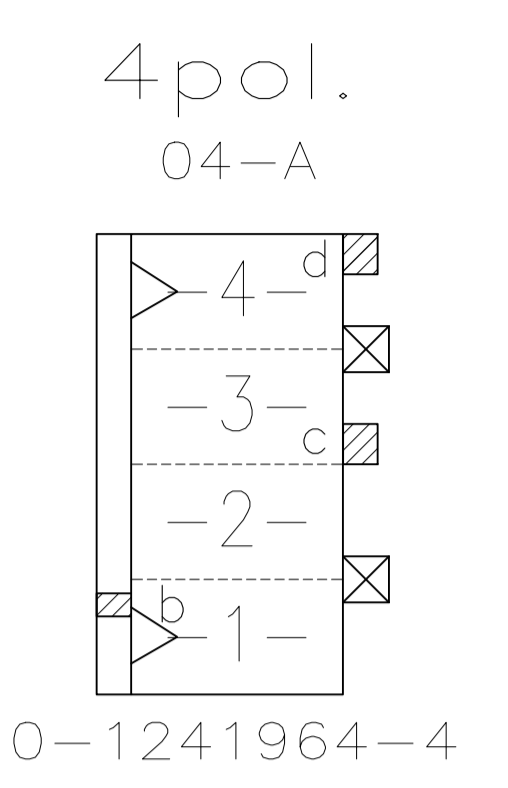
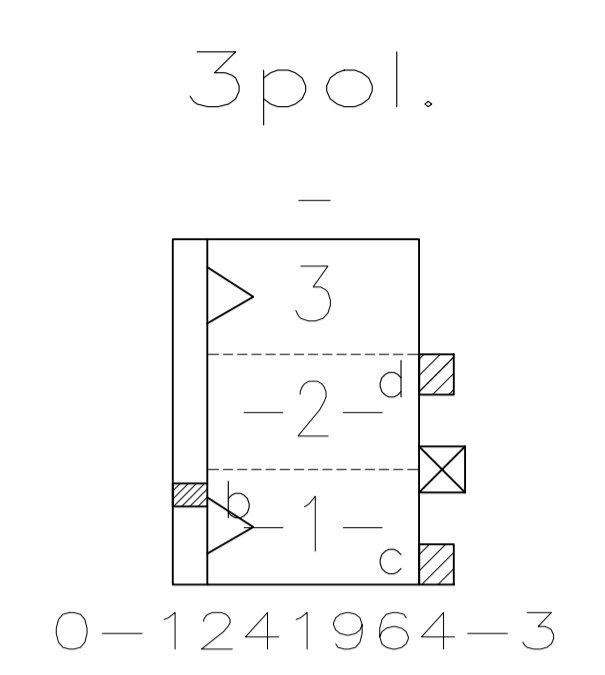
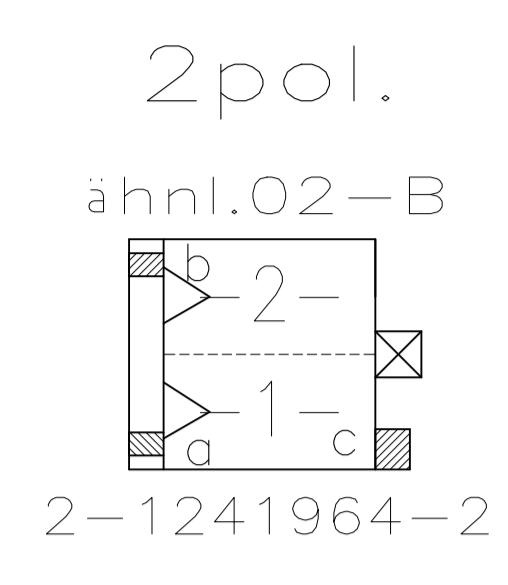
CUSTOMER PART NO	AMP PART NO	REV.	PCS.	MATERIAL	SURFACE COLOR	DESCRIPTION	ITEM NO
-	-	-	-	-	-	-	-
-	-	-	-	-	-	-	-
-	-	-	-	-	-	-	-

THIS DRAWING IS A CONTROLLED DOCUMENT.

DIMENSIONS: mm	TOLERANCES UNLESS OTHERWISE SPECIFIED: 2 DECIMALS 0.150 ± 0.050 1.500 ± 0.100 1.500 ± 0.200 3.000 ± 0.200 4.000 ± 0.200 ANGLES ± 1°	DIN Mahnke, B 26-NOV-02 Stredak, F 29-NOV-02 Bleicher, B 30-NOV-02	NAME 2-11 POS. STANDARD-TIMER HOUSING WITH INTERIOR LOCKING, PITCH 5mm 2-11 pos. Standard-Timer Gehäuse mit Innenverrastung, RAST5
SEE SHEET 2/2 / siehe Blatt 2/2		SIZE A1	SCALE 5:1
MATERIAL SEE SHEET 2/2 Siehe Blatt 2/2		FINISH -	WEIGHT -

CUSTOMER DRAWING

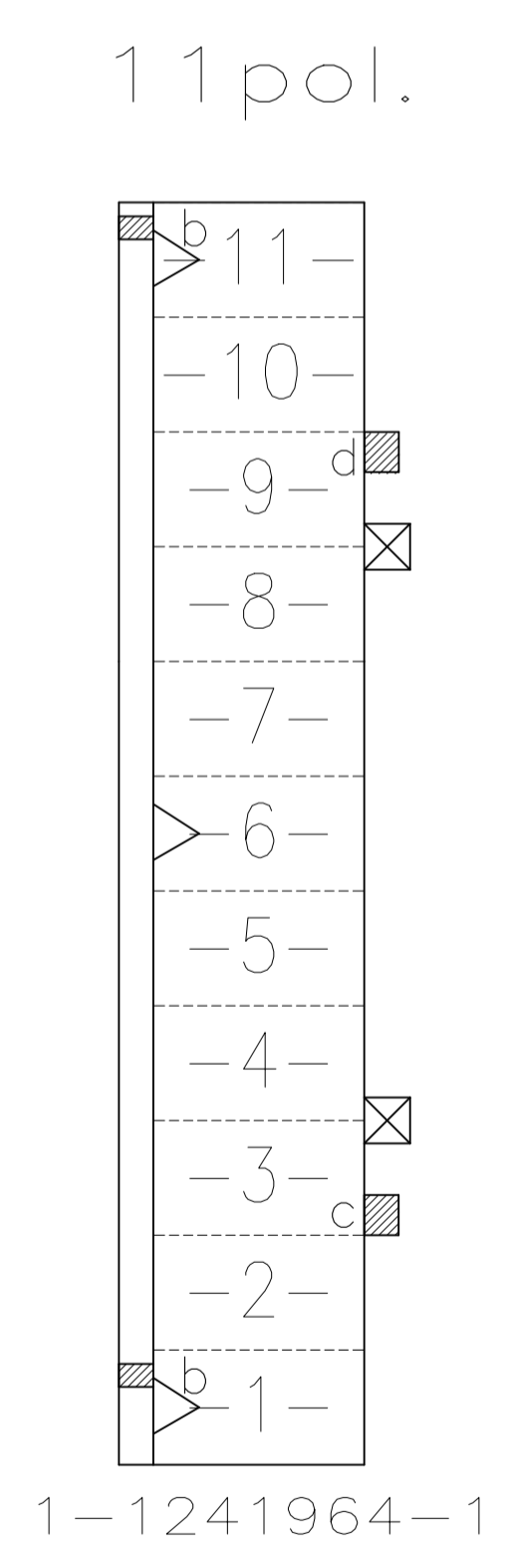
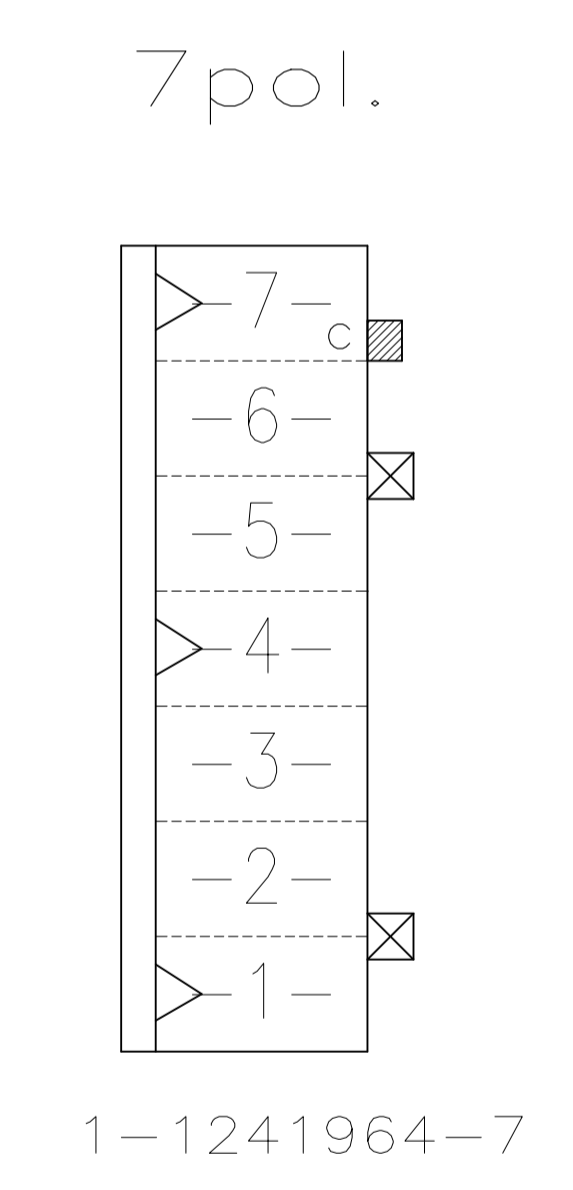
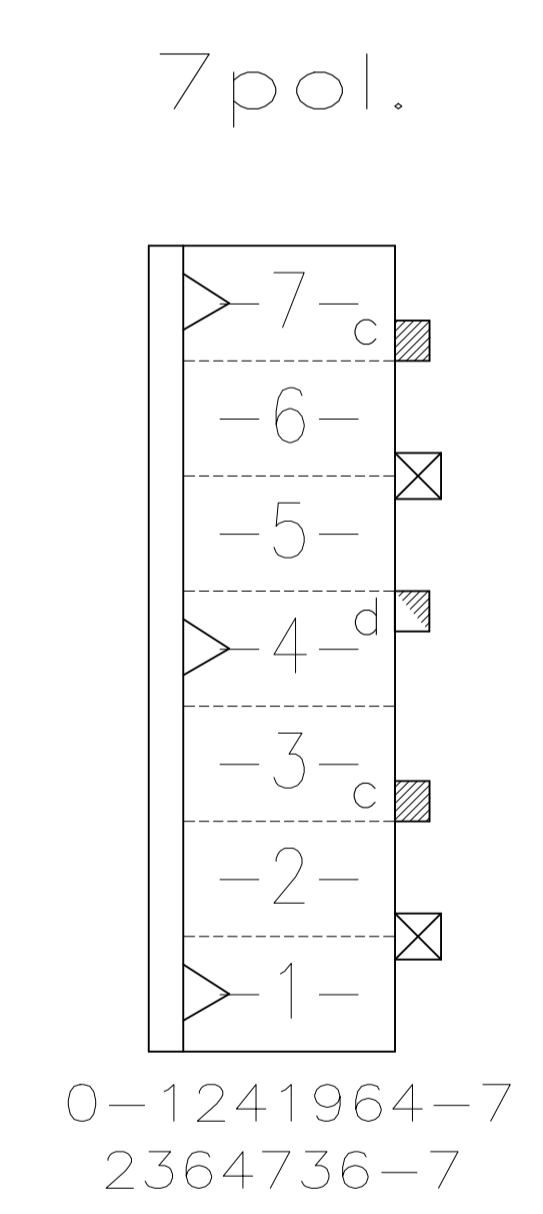
REVISIONS					
REV	DATE	DESCRIPTION	BY	CHK	APPV
-	-	SEE SHEET 1	-	-	-



Darstellung:
 Lage der Kodier- und
 Polarisierungsrippen und
 Rastfedern am Gehäuse

DESCRIPTION:
 POSITION OF KEYING RIB AND THE
 LOCKING LATCH AT THE HOUSINGS

TE PART NUMBER (OPTIONAL)



Bestell-Nr.	Pol-Zahl	Maß A	Maß B	Farbe	Material	Gegenstecker	
PART NO.	POS.	DIM A	DIM B	COLOUR	MATERIAL	MATED WITH	
2364736-7	7	35	30	BLUE	PA66 ¹³ / _{UL94-V0 & GWEPT 750°C n.f.}	¹⁵ / ₁₆	
-	-	-	-	-	-	-	
1-1241964-1	11	55	50	NATURE/natur	PA66 UL94V-2	¹⁵ / ₁₆	
1-1241964-7	7	35	30	NATURE/natur		¹⁵ / ₁₆	
0-1241964-7	7	35	30	NATURE/natur		¹⁵ / ₁₆	
-	-	-	-	-		-	-
0-1241964-6	6	30	25	NATURE/natur		¹⁵ / ₁₆	
-	-	-	-	-		-	-
1-1241964-5	5	25	20	NATURE/natur		¹⁵ / ₁₆	
0-1241964-5	5	25	20	NATURE/natur		¹⁵ / ₁₆	
0-1241964-4	4	20	15	NATURE/natur		¹⁵ / ₁₆	
-	-	-	-	-		-	-
-	-	-	-	-		-	-
-	-	-	-	-		-	-
-	-	-	-	-		-	-
-	-	-	-	-		-	-
-	-	-	-	-		-	-
0-1241964-3	3	15	10	NATURE/natur		¹⁵ / ₁₆	
-	-	-	-	-		-	-
2-1241964-2	2	10	5	NATURE/natur	¹⁵ / ₁₆		
Bestell-Nr.	Pol-Zahl	Maß A	Maß B	Farbe	Material	Gegenstecker ¹⁴	
PART NO.	POS.	DIM A	DIM B	COLOUR	MATERIAL	MATED WITH ¹⁴	

THIS DRAWING IS A CONTROLLED DOCUMENT.

DIMENSIONS: mm

TOLERANCES UNLESS OTHERWISE SPECIFIED:

0. PLC	± 0.2mm
1. PLC	± 0.2mm
2. PLC	± 0.2mm
3. PLC	± 0.2mm
4. PLC	± 0.2mm
ANGLES	± 1°

MATERIAL: SEE SHEET 2/2

FINISH: -

DIN: 26-NOV-02

MAHNE, B

29-NOV-02

STREDAK, F

30-NOV-02

NAME: 2-11 POS. STANDARD-TIMER HOUSING WITH INTERIOR LOCKING, PITCH 5mm

PRODUCT SPEC: 108-18049-1

APPLICATION SPEC: -

SIZE: A1

CAGE CODE: 00779

DRAWING NO: 1241964

RESTRICTED TO: -

WEIGHT: 0

CUSTOMER DRAWING

SCALE: 5:1

SHEET: 2 OF 2

REV: A14

单击下面可查看定价，库存，交付和生命周期等信息

[>>TE Connectivity\(泰科\)](#)