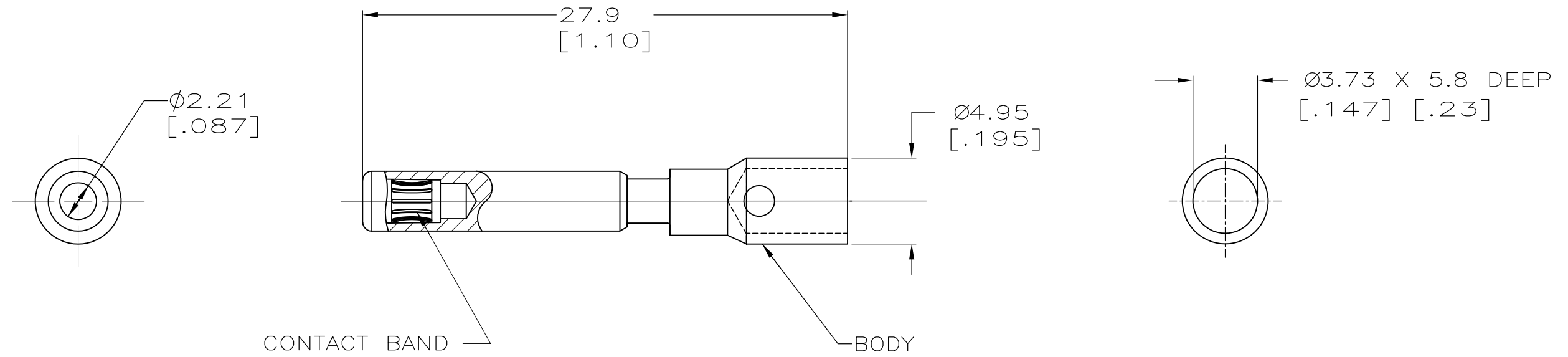


LOC	DIST	REVISIONS			
P	LTR	DESCRIPTION	DATE	DWN	APVD
CH	11	C2	REVISED PER ECO-11-010839	25MAY11	RK HMR

- 1 MATERIAL- BODY: COPPER ALLOY
BAND: BeCu
- 2 FINISH- BODY AND BAND: 5.08μM[.000200] SILVER
OVER 1.02μM[.000040] NICKEL.
- 3. WIRE BARREL WILL ACCEPT #10 AWG WIRE.
- 4. MATES WITH AMP PART NUMBER 193796-1.



193797-1
PART NO

THIS DRAWING IS A CONTROLLED DOCUMENT.		DWN J.TURNER	06-03-93	STE TE Connectivity																
DIMENSIONS: mm[INCHES]		CHK ALG	11-17-93																	
TOLERANCES UNLESS OTHERWISE SPECIFIED:		APVD SRS	11-17-93	NAME SOCKET ASSY, LOUVERTAC, NO 10 AWG, UNIVERSAL MATE-N-LOK* II																
<table border="0"> <tr><td>0 PLC</td><td>± -</td></tr> <tr><td>1 PLC</td><td>± 0.5[.02]</td></tr> <tr><td>2 PLC</td><td>± 0.25[.010]</td></tr> <tr><td>3 PLC</td><td>± -</td></tr> <tr><td>4 PLC</td><td>± -</td></tr> <tr><td>ANGLES</td><td>± -</td></tr> </table>		0 PLC	± -	1 PLC	± 0.5[.02]	2 PLC	± 0.25[.010]	3 PLC	± -	4 PLC	± -	ANGLES	± -	PRODUCT SPEC	-		SIZE	CAGE CODE	DRAWING NO	RESTRICTED TO
0 PLC	± -																			
1 PLC	± 0.5[.02]																			
2 PLC	± 0.25[.010]																			
3 PLC	± -																			
4 PLC	± -																			
ANGLES	± -																			
MATERIAL	1	FINISH	2	APPLY SPEC	-		A3	00779	C-193797	-										
CUSTOMER DRAWING				WEIGHT	-		SCALE	NONE	SHEET	1 of 1	REV	C2								

*MATE-N-LOK IS A TRADEMARK

单击下面可查看定价，库存，交付和生命周期等信息

[>>TE Connectivity\(泰科\)](#)