

THIS DRAWING IS UNPUBLISHED.

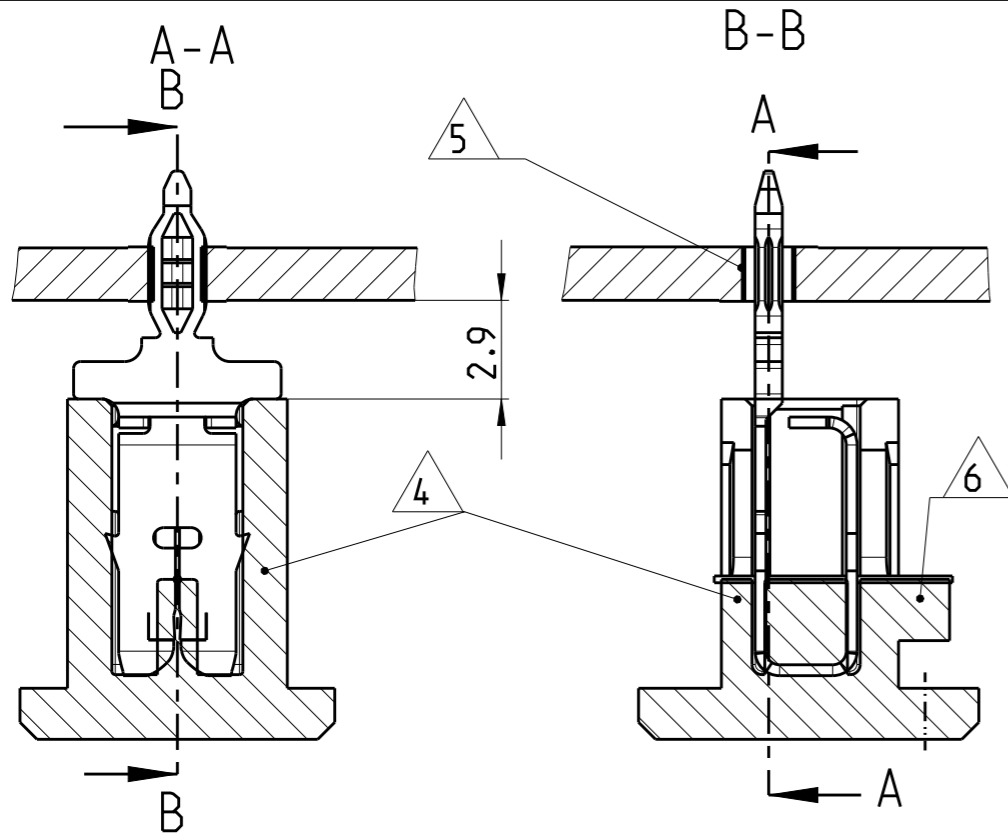
RELEASED FOR PUBLICATION

2012

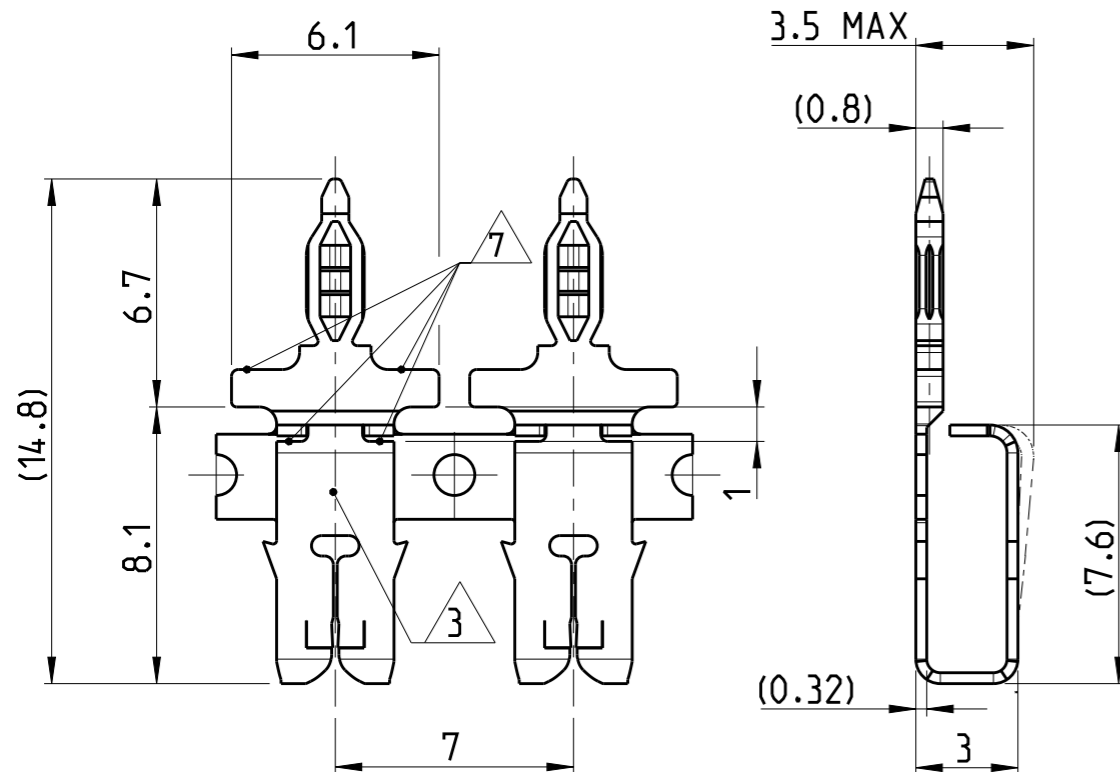
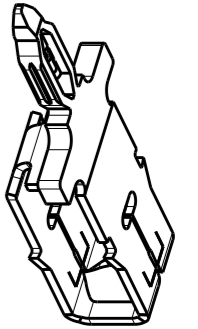
© COPYRIGHT 2012 Tyco Electronics AMP GmbH

ALL RIGHTS RESERVED.

LOC	DIST	REVISIONS					
		P	LTR	DESCRIPTION	DATE	DWN	APVD
A1	-			REVISED PER ECR-20-009998	22JUL2020	JA	TD



- 1 SLOT ACCEPTS SINGLE OR DOUBLE COPPER MAGNET WIRE (SEE TABLE) NOT FOR USE WITH ALUMINUM MAGNET WIRE.
- 2 SLOT ACCEPTS SINGLE OR DOUBLE ALUMINUM MAGNET WIRE (SEE TABLE)
- 3 IDENTIFICATION NUMBER FOR MAGNET WIRE RANGE
- 4 CONTACT CAVITY AND APPLICATION ACC. SPECIFICATION 114-74109. (SEE TABLE)
- 5 PCB LAYOUT (HOLES ACC. SPECIFICATION. 108-90801)
- 6 CUTTING LINE: AREA WILL BE CUTTED OFF BY TERMINATION
- 7 AREA FOR INSERTION TOOL
- 8 DELIVERY STATE: STRIP ON CORRUGATED REEL WITH PAPER INTERLAYER
- 9 To Be APPROVED, ON DEMAND BY TE ENGINEERING
- 10 MAX.2 SPLICES PER REEL; SPLICES BE NOT BONDED TOGETHER



DIRECTION OFF TOP OF REEL	FIG	AWG BARE WIRE RANGE	SINGLE WIRE BARE WIRE RANGE	DOUBLE WIRE BARE WIRE RANGE	REV	PART NO	
FIG 273	33	-	15 - 16	-	A	2238145-3	
		-	16.5 - 16	-	A	2238145-2	
FIG 272	24	-	19.5 - 17	-	A	1247004-3	
		-	19.5 - 17.5	-	A	1247004-2	
	12	-	22 - 18.75	-	A	1247003-3	
		-	22.5 - 20	-	A	1247003-2	
	10	24 - 22	24 - 22	0.51mm to 0.64mm	0.51mm to 0.64mm	A	1247002-3
		26 - 23	26 - 22.5	0.40mm to 0.56mm	0.40mm to 0.63mm	A	1247002-2
	6	28 - 25	28 - 25	0.32mm to 0.45mm	0.32mm to 0.45mm	A	1247001-3
		29.5 - 26.5	29.5 - 26.5	0.265mm to 0.4mm	0.265mm to 0.4mm	A	1247001-2
4	33 - 30	33 - 30	0.18mm to 0.265mm	0.18mm to 0.265mm	A	1247000-2	

THIS DRAWING IS A CONTROLLED DOCUMENT.		DWN H. Ballmert 04 JUN 2012	 TE Connectivity	
DIMENSIONS: mm		CHK B. Schnaubelt 04 JUN 2012		
TOLERANCES UNLESS OTHERWISE SPECIFIED:		APVD T. Klenner 04 JUN 2012	NAME	
0 PLC ±0.2		PRODUCT SPEC 108-74116	MAG-MATE 300 SERIES WITH MULTISPRING	
1 PLC ±0.2		APPLICATION SPEC 114-74109	-	
2 PLC ±0.2		WEIGHT 0.25g/prt	SIZE A3	CAGE CODE 00779
3 PLC ±0.2		CUSTOMER DRAWING	DRAWING NO C-1247000	RESTRICTED TO -
4 PLC ±0.2		MATERIAL COPPER ALLOY	SCALE 5:1	SHEET 1 OF 1
ANGLES ±1°		FINISH POSTTINNED	REV A11	

单击下面可查看定价，库存，交付和生命周期等信息

[>>TE Connectivity\(泰科\)](#)