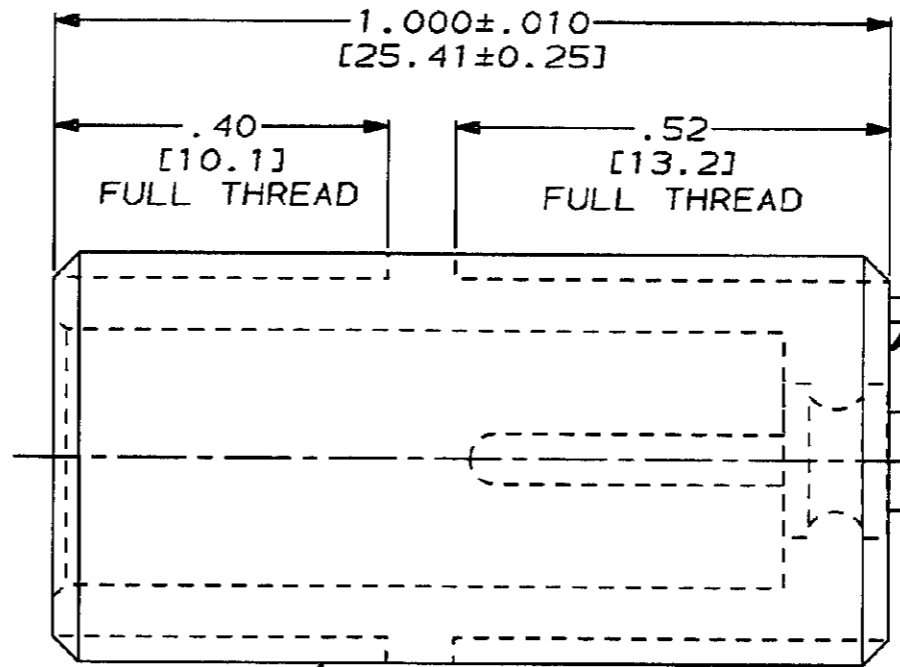
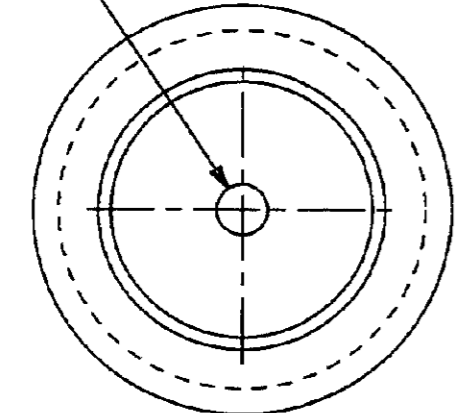


DRAWING MADE IN THIRD ANGLE PROJECTION

THIS DRAWING IS UNPUBLISHED. RELEASED FOR PUBLICATION, 19
 © COPYRIGHT 19 BY AMP INCORPORATED. ALL INTERNATIONAL RIGHTS RESERVED.

PROD	LOC	DIST	P	F	ZONE	LTR	DESCRIPTION	DATE	APPD
4087	DF	50				0	RELEASED PER NPR 92-177 CT	7-92	SG

.062 [1.57] DIA PIN
 MAT'L: BRASS PER ASTM-B-16
 FINISH: GOLD PLATED PER MIL-G-45204
 OVER NICKEL PER QQ-N-290



.030 MAX
 [0.76]
 GATE CUTOFF

RECEPTACLE
 MAT'L: EPOXY MLDG. CMPD.
 COLOR: BLACK

1/2-20 UNF-2A

1/2-32 UN-2A

1. RECEPTACLE WILL ACCEPT A LGH-1 LEAD WITH A .88 [22.4] MOLDED END LENGTH.

THIS DRAWING IS A CONTROLLED DOCUMENT FOR AMP INCORPORATED. IT IS SUBJECT TO CHANGE AND THE CONTROLLING ENGINEERING ORGANIZATION SHOULD BE CONTACTED FOR THE LATEST REVISION.

DO NOT SCALE PRINT. UNLESS SPECIFIED DIMENSIONS IN INCHES (mm)		DR 7-1-92 C.C. THOMAS		448463-1	
TOLERANCES ON: 2 PLC DEC ± .01 [0.3] 3 PLC DEC ± .005 [0.13] ANGLES ± -		CHK 7-8-92 S. GLATFELTER		PART NO	
MATERIAL SEE CALLOUTS		APPD 7-8-92 S. GLATFELTER		AMP Incorporated Harrisburg, PA 17105-3608	
FINISH SEE CALLOUTS		APPD 7-8-92 C.C. THOMAS		NAME RECEPTACLE, LGH-1, SPECIAL	
		PRODUCT SPEC -		SIZE B	
		APPLICATION SPEC -		CAGE CODE 00779	
		WEIGHT -		DRAWING NO C-448463	
		SCALE 5:1		SHEET 1 OF 1	

CUSTOMER DRAWING

单击下面可查看定价，库存，交付和生命周期等信息

[>>TE Connectivity\(泰科\)](#)