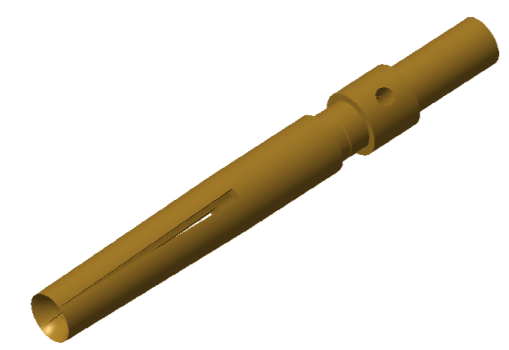
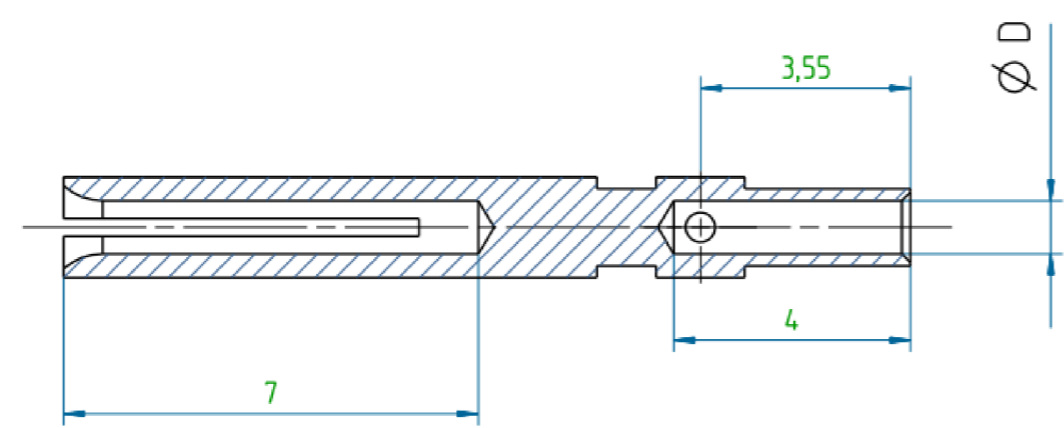
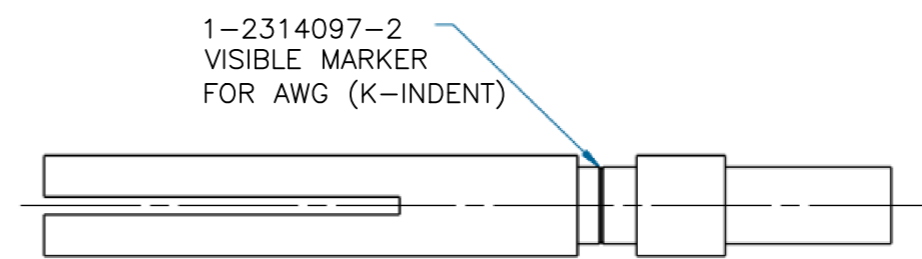
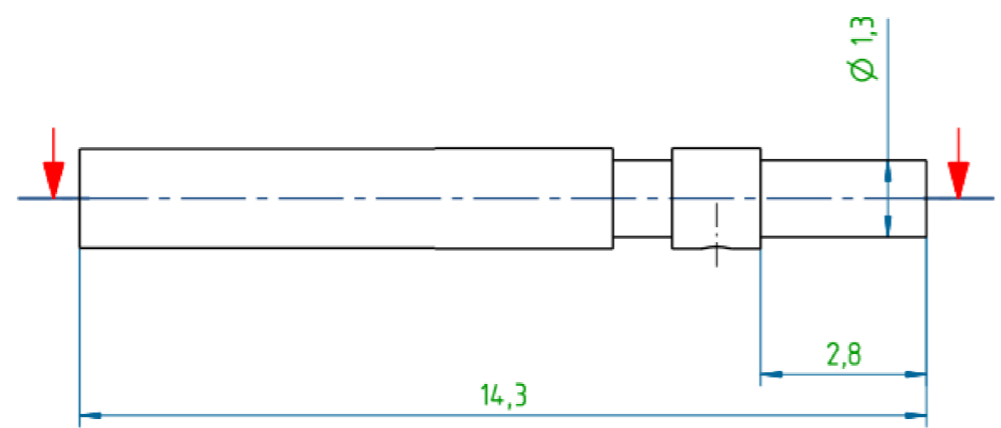
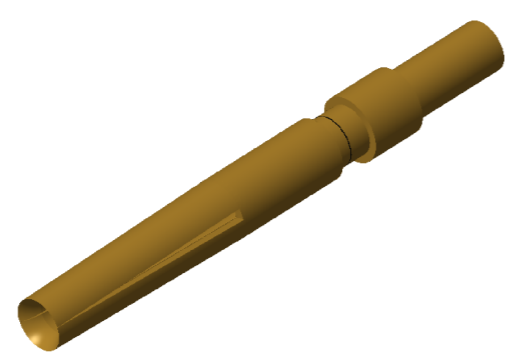


THIS DRAWING IS UNPUBLISHED.		RELEASED FOR PUBLICATION	
© COPYRIGHT - By -		ALL RIGHTS RESERVED.	
PROJECT	PRJ-14-000004825		
PART NO.	X-2314101-X		
DESCRIPTION	M12 CRIMP CONTACT SOCKET 0.8mm AWG22/AWG26		
CUSTOMER	GENERAL MARKET		

REVISIONS					
P	LTR	DESCRIPTION	DATE	DWN	APVD
	A2	REVISED PER ECR-17-013764	13NOV2018	GK	SE


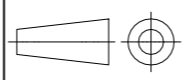


1-2314101-1



1-2314101-2

2	1-2314101-2	M12 CRIMP CONTACT SOCKET A 0.8MM AWG26 (AU08)	0.6	BRASS	1.5-2.5µm Ni/0.8µmAu	K-INDENT
1	1-2314101-1	M12 CRIMP CONTACT SOCKET A 0.8MM AWG22/AWG24 (AU08)	0.9		1.5-2.5µm Ni/0.8µmAu	-
SL.NO	PART NO.	PART NAME	ØD	MATERIAL	SURFACE TREATMENT	REMARKS

THIS DRAWING IS A CONTROLLED DOCUMENT.		DWN KIRAN K 06DEC2016	 TE Connectivity				
DIMENSIONS: mm		CHK KIRAN K 06DEC2016					
TOLERANCES UNLESS OTHERWISE SPECIFIED: DIN ISO 2768 m		APVD S EGBERT 06DEC2016					
		PRODUCT SPEC 108-156001	NAME M12 CRIMP CONTACT SOCKET 0.8mm AWG22/AWG26				
MATERIAL -		FINISH -	APPLICATION SPEC 114-156002	SIZE A3	CAGE CODE A	DRAWING NO C-2314101	RESTRICTED TO -
CUSTOMER DRAWING			WEIGHT	SCALE NTS	SHEET 1 OF 1	REV A2	

NOTES:
 1. APPLICATION TOOLING TO BE USED
 601967-1 (STANDARD), RECOMMENDED POSITIONER IS 1-2823582-4
 OR
 601966-1 (COMPACT), RECOMMENDED POSITIONER IS 1-2823581-1.

单击下面可查看定价，库存，交付和生命周期等信息

[>>TE Connectivity\(泰科\)](#)