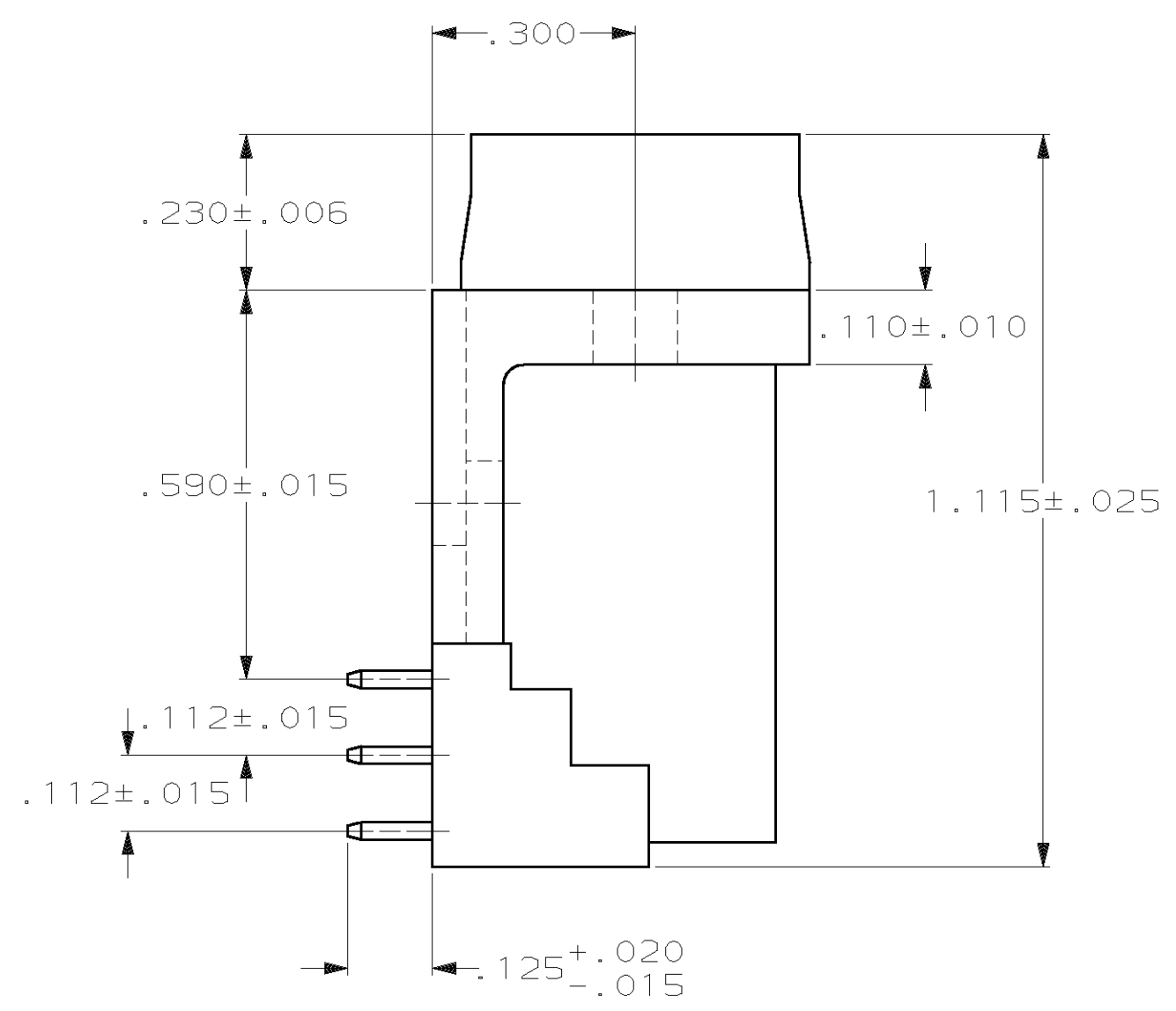
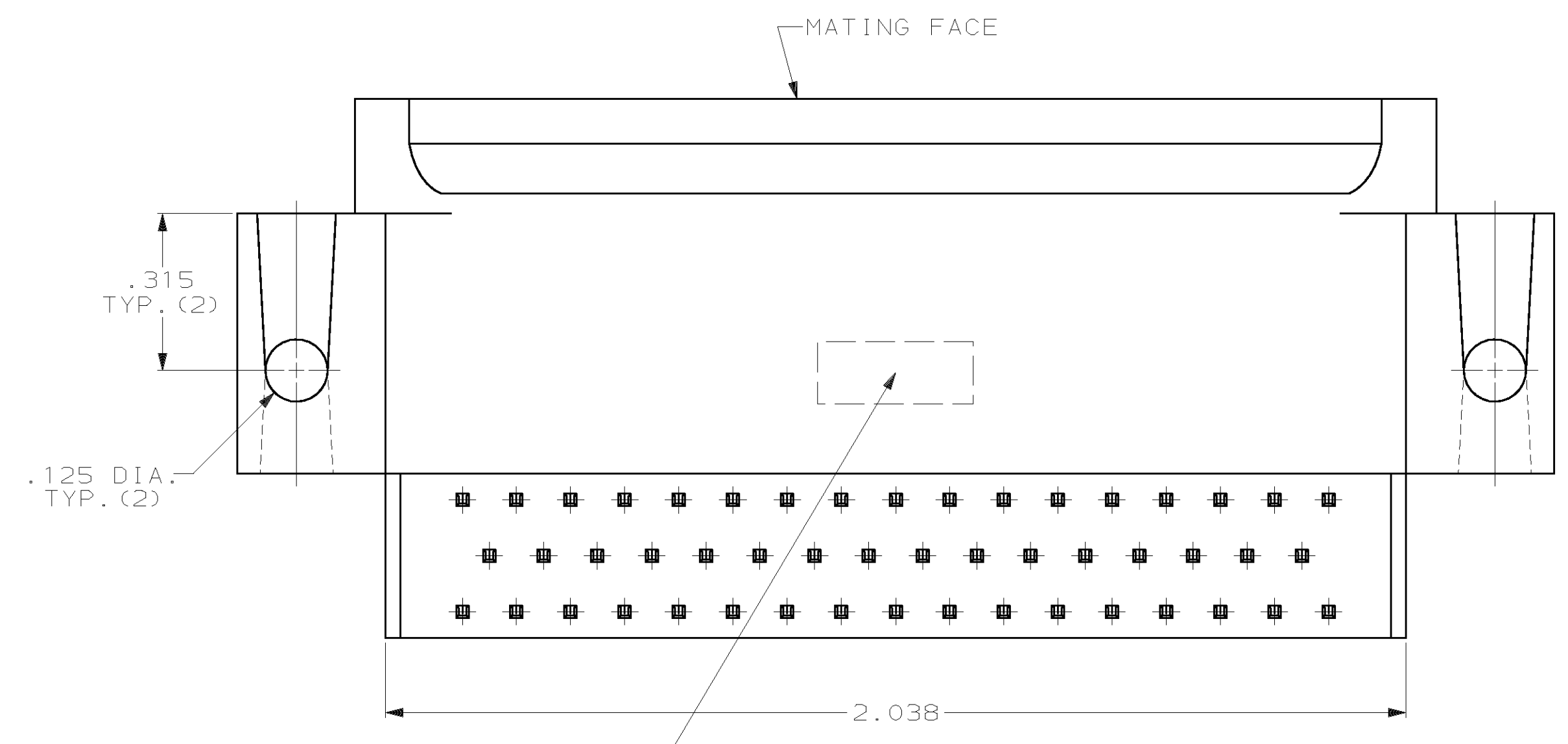
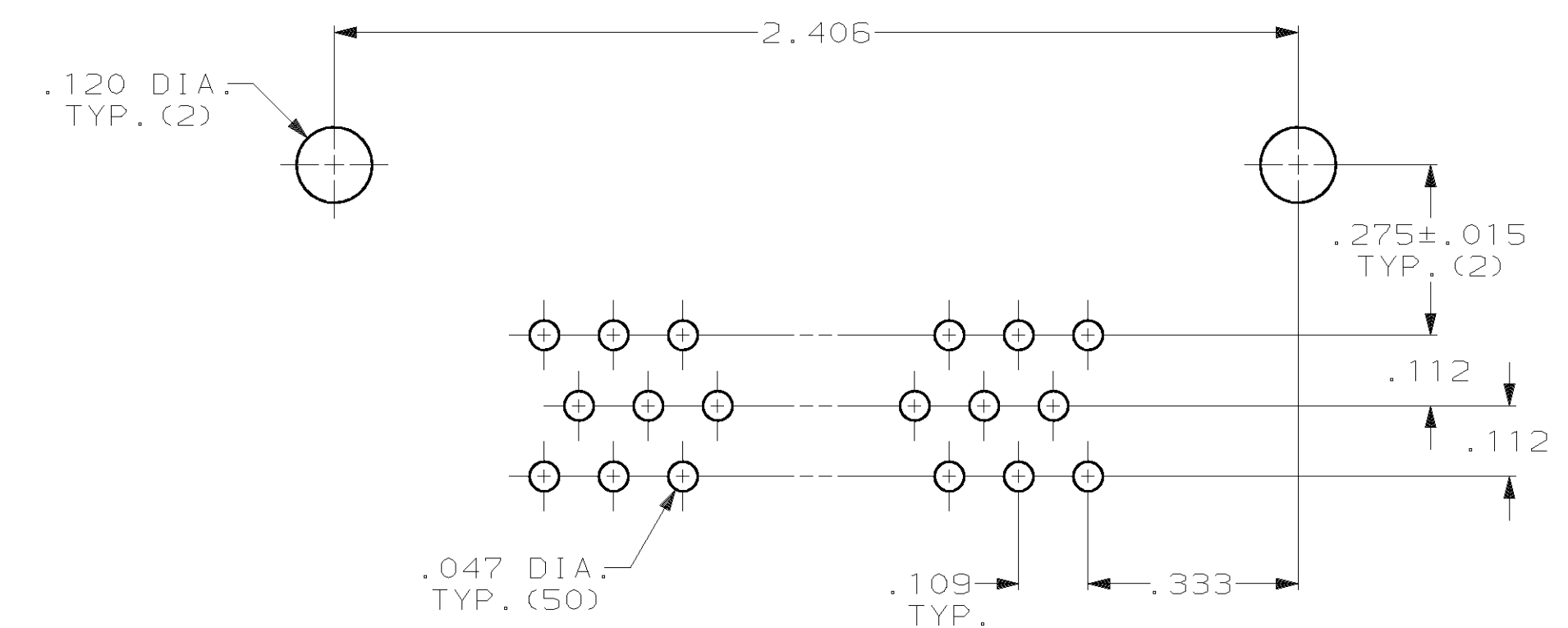


- CONNECTOR MATES WITH ANY 50 POS. RECEPTACLE IN AMPLIMITE SERIES & COMPLIES WITH AMP SPEC. 108-40,005 WHERE APPLICABLE.
- FLAME RETARDANT 94V-0 RATED THERMOPLASTIC; COLOR: BLACK.
- BRASS PER MIL-C-50.
- GOLD PLATING PER MIL-G-45204, TIN PLATING PER MIL-T-10727, NICKEL PLATING PER QQ-N-290.
- GOLD PLATED FOR LENGTH OF .150 MIN FROM MATING END, .000030 MIN GOLD IN MATED AREA, .000100 MIN TIN-LEAD ON OPPOSITE END, BOTH OVER .000050 MIN NICKEL.
- .000050 GOLD FOR LENGTH OF .150 MIN. FROM MATING END, GOLD FLASH ON REMAINDER, ALL OVER .000050 NICKEL ON ENTIRE CONTACT.
- GOLD PLATED FOR LENGTH OF .150 MIN FROM MATING END, GOLD FLASH IN MATED AREA, .000100 MIN TIN-LEAD ON OPPOSITE END, BOTH OVER .000050 MIN NICKEL.



"AMP", PART NO. & DATE CODE, STAMPED IN AREA INDICATED, ON FAR SIDE



P.C. BOARD MOUNTING DIMENSIONS

OBSOLETE	△	206971-5
OBSOLETE	△	206971-4
OBSOLETE	△	206971-3
	△	206971-2
	△	206971-1
CONTACT FINISH		PART NUMBER

THIS DRAWING IS A CONTROLLED DOCUMENT.		DWN: J. GERACE 6-8-84	AMP Incorporated Harrisburg, PA 17105-3608
DIMENSIONS: INCHES		CHK: J. GERACE 6-8-84	
TOLERANCES UNLESS OTHERWISE SPECIFIED:		APP'D: R. TAYLOR 6-21-84	NAME: PLUG ASSEMBLY, SIZE 5, 50 POS., RIGHT ANGLE, .590 SERIES, .025 SQ. POSTS, AMPLIMITE HDP
0 PLC ± 1 PLC ±.005 2 PLC ±.005 3 PLC ± 4 PLC ±		PRODUCT SPEC: -	APPLICATION SPEC: -
MATERIAL: MOLDED PARTS: △ CONTACTS: △		FINISH: △ CONTACTS: SEE TABLE	SIZE: A1 CAGE CODE: 00779 DRAWING NO: 206971
CUSTOMER DRAWING		SCALE: 4:1	SHEET 1 OF 1 REV L

单击下面可查看定价，库存，交付和生命周期等信息

[>>TE Connectivity\(泰科\)](#)