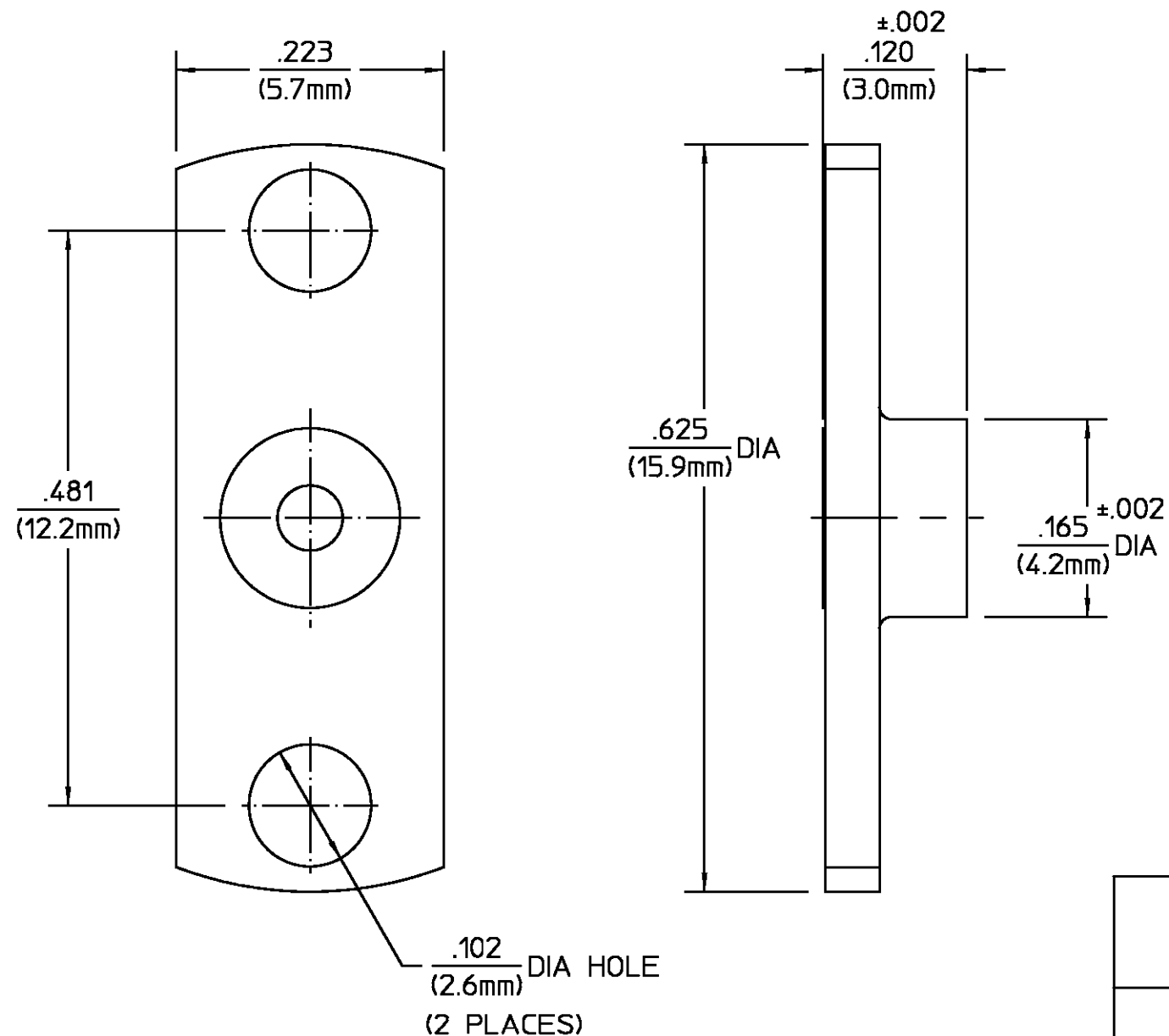


REVISIONS			
REV	DESCRIPTION	DATE	APPROVED
040	REVISED	10/16/95	DPG 10/19/95



SHROUD	STAINLESS STEEL PER ASTM-A484 AND ASTM- A582, TYPE 303	PASSIVATE PER ASTM-A380
COMPONENT	MATERIAL	FINISH
UNLESS OTHERWISE SPECIFIED DIMENSIONS ARE IN INCHES TOLERANCE ON	DRAWN BY <i>E.F.H.</i> DATE 1/13/92	AMP AMP Incorporated 140 Fourth Avenue Waltham, MA 02451-7599
FRAC. DEC. ANGLES ± 1/64 ±.005 ± 1°	CHECKED BY MY DATE 1-15-92	
	APPD BY <i>RAC</i> DATE 1/15/92	
These drawings and specifications are the property of M/A-COM Incorporated and shall not be reproduced or copied or used in whole or in part as the basis for the manufacture or sale of item(s) without written permission.	USE ASS'Y PROCEDURE 408-04752 NO. AP. (29-006)	TITLE OSMP SHROUD
	SIZE B	CODE IDENT NO. 26805
	SCALE 8:1	2998-5002-02
		REV 040
		SHEET 1 OF 1

CUSTOMER DRAWING

AMP PART # 1056722-1
SHEET 1 OF 1 REV A

单击下面可查看定价，库存，交付和生命周期等信息

[>>TE Connectivity\(泰科\)](#)