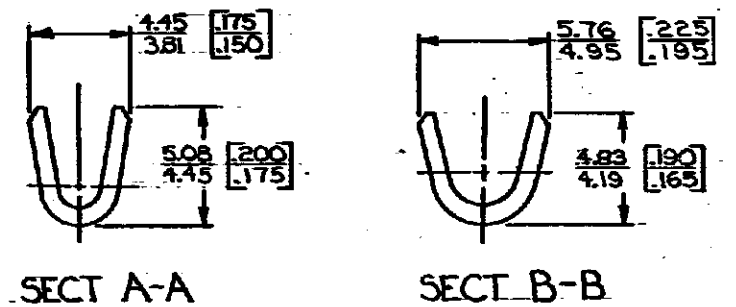
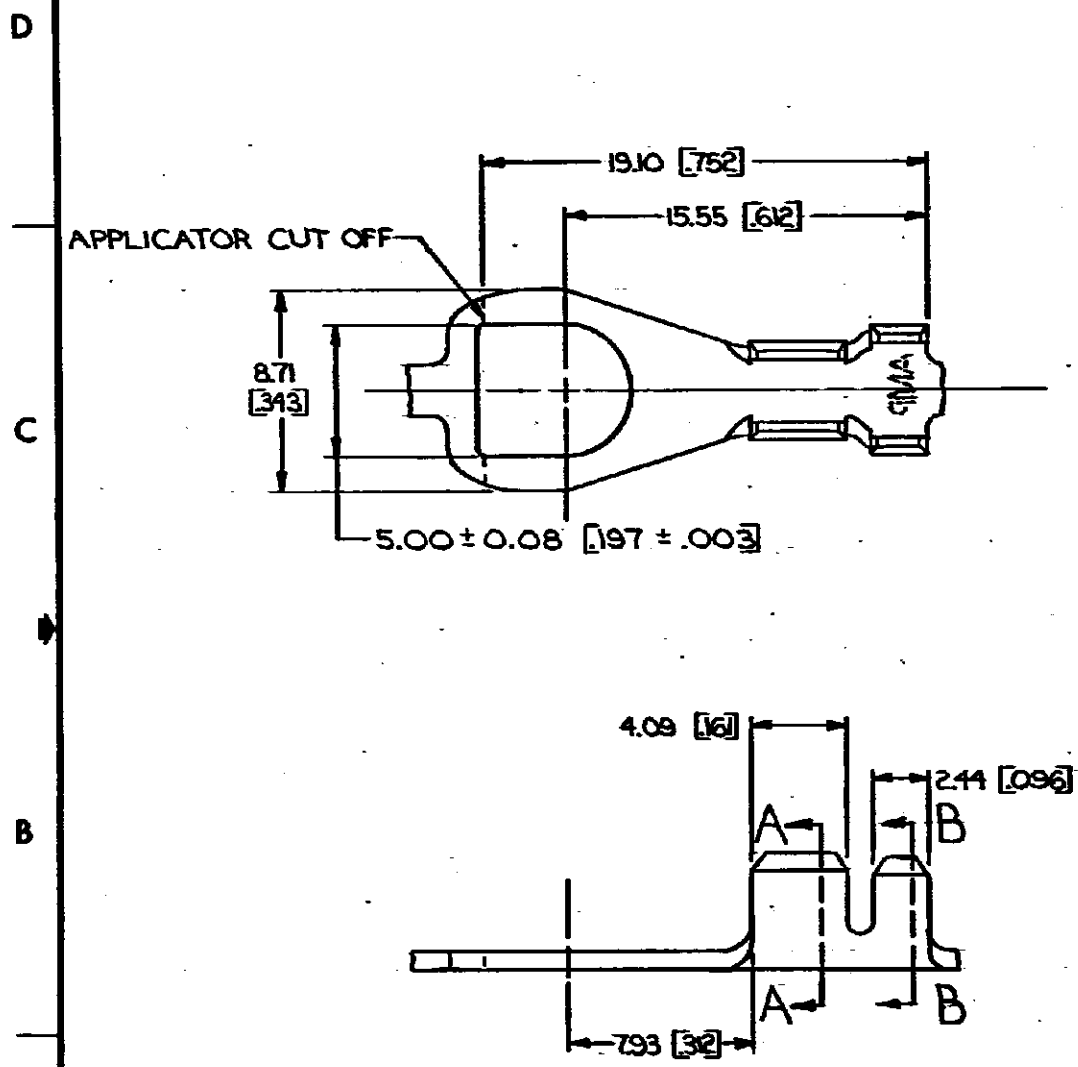


DRAWING MADE IN THIRD ANGLE PROJECTION

© COPYRIGHT 1964 BY AMP INCORPORATED, HARRISBURG, PA.
 ALL INTERNATIONAL RIGHTS RESERVED. AMP INCORPORATED PRODUCTS
 COVERED BY U. S. AND FOREIGN PATENTS AND/OR PATENTS PENDING.

1 LOC AF DIST 50

REVISIONS					
P	ZONE	LTR	DESCRIPTION	DATE	APPROVED
		D	REDRAWN & REVISED A-3943	4/2/78	
		E	REVISED AF0230	8/2/78	JR/47
		F	OBSOLETE -1 AF 1556	6/3/76	JR/64
		G	REV PER AF5641A	11/1/88	DKS/1076



1. CONTINUOUS STRIP ON REELS.
 2. DIMENSIONS IN BRACKETS ARE IN INCHES.

METRIC

#10	0.8-2.0 mm ² [18-14]	2.54-3.56 [100-.140]	PRE-NICKEL TIN	0.79 [03] STEEL 0.76 [030] BRASS	40808-1 40808
STUD SIZE	WIRE RANGE	INSULATION RANGE	FINISH	MATERIAL	PART NO

UNLESS OTHERWISE SPECIFIED DIMENSIONS ARE IN MILLIMETERS. TOLERANCES ON: DECIMALS ± 0.03 [015] ANGLES ± 1°	CONTRACT NO	AMP INCORPORATED Harrisburg, Pa.	
MATERIAL SEE TABLE	DR <i>L. Magano</i> 4/20/78 CHK <i>G. Yetter</i> 7/20/78	NAME SPADE	
FINISH SEE TABLE	APP <i>R.P. Frantz</i> 8-10-78 APP <i>G. Zinke</i> 8-10-78	SIZE B	CODE IDENT NO 00779
	DSGN APPD OTHER APPD	DRAWING NO 40808	SHEET

AMP 1470-15 (7-73)

CUSTOMER DRAWING

单击下面可查看定价，库存，交付和生命周期等信息

[>>TE Connectivity\(泰科\)](#)