

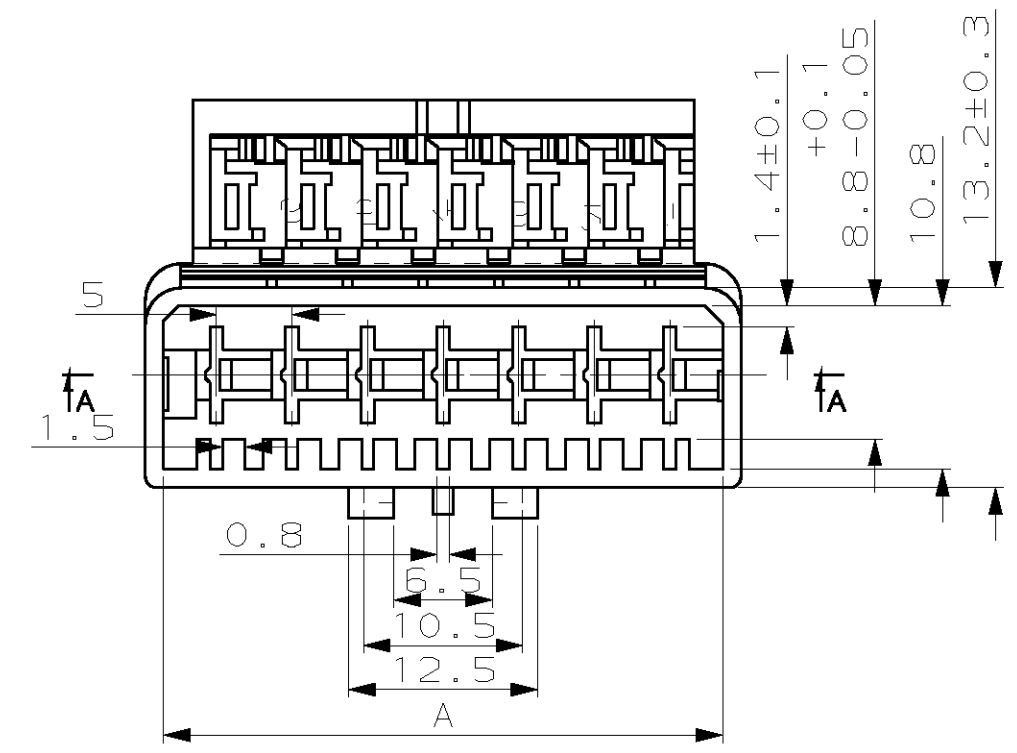
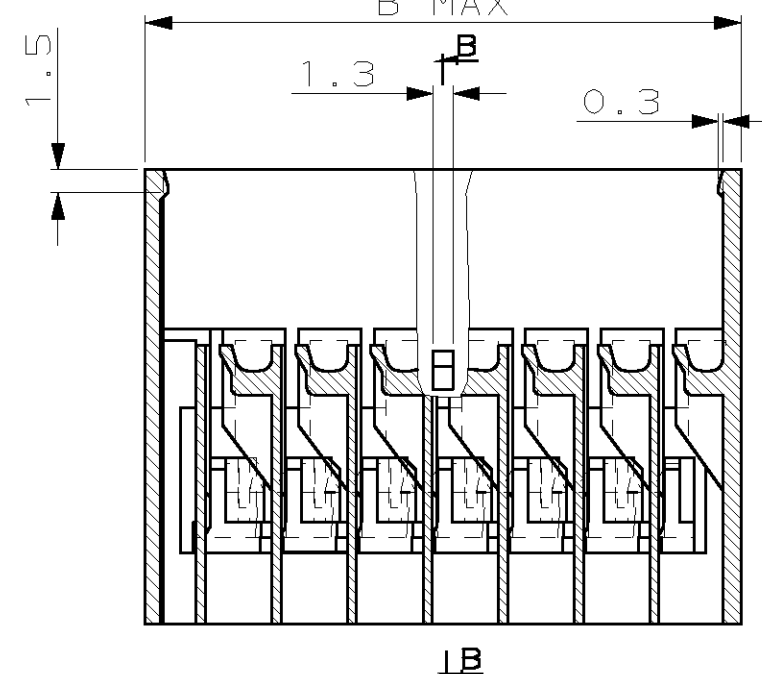
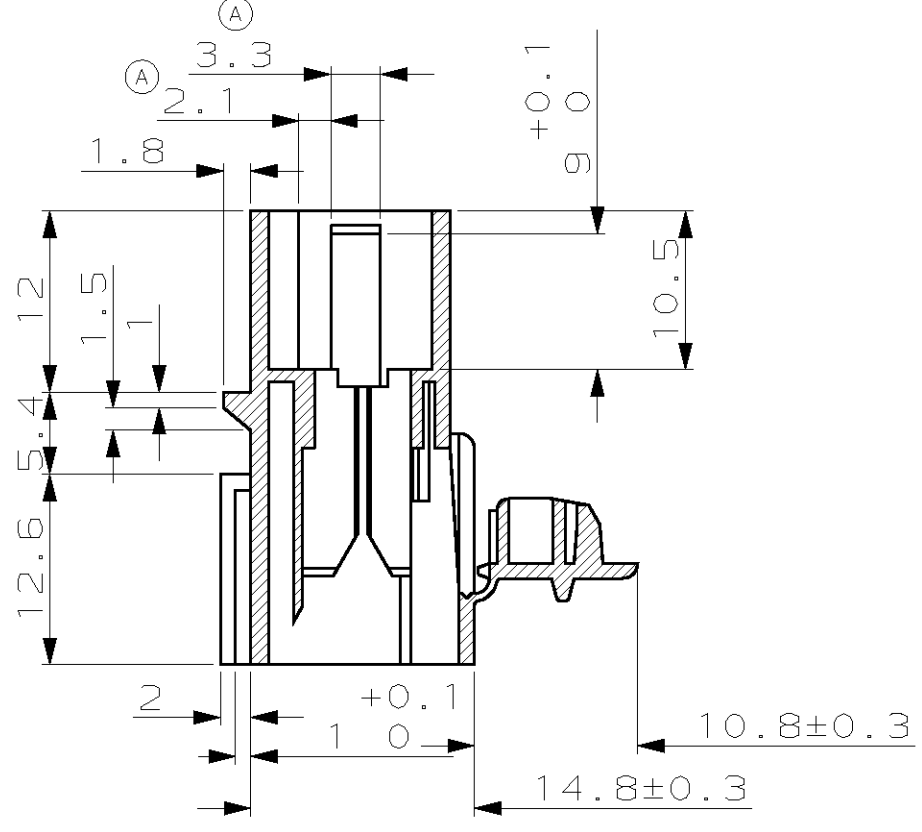
THIS DRAWING IS UNPUBLISHED. RELEASED FOR PUBLICATION ,19 .
 © COPYRIGHT BY TYCO ELECTRONICS CORP. ALL RIGHTS RESERVED.

LOC F DIST 7

| REVISIONS | | | | |
|-----------|-----|------------------|-----------|------|
| P | LTR | DESCRIPTION | DATE | APVD |
| B | | TABLE REFERENCES | 12-JUN-02 | RP |

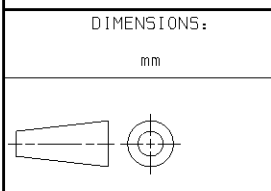
COUPE B-B

COUPE A-A



| | | | |
|------|----|-----------------------------|------------|
| 64.7 | 62 | 12 | 144837-2 |
| 59.7 | 57 | 11 | 144837-1 |
| 54.7 | 52 | 10 | 144836-0 |
| 49.7 | 47 | 9 | 144836-9 |
| 44.7 | 42 | 8 | 144836-8 |
| 39.7 | 37 | 7 | 144836-7 |
| 34.7 | 32 | 6 | 144836-6 |
| 29.7 | 27 | 5 | 144836-5 |
| 24.7 | 22 | 4 | 144836-4 |
| B | A | Nb de VOIES (Nb of WAYS) | REFERENCES |

THIS DRAWING IS A CONTROLLED DOCUMENT.



MATERIAL PA 6.6

TOLERANCES UNLESS OTHERWISE SPECIFIED:

| | |
|--------|------|
| 0-PLC | ± |
| 1-PLC | ±0.3 |
| 2-PLC | ± |
| 3-PLC | ± |
| 4-PLC | ± |
| ANGLES | ±5° |
| FINISH | - |

| | | |
|------------------|--------------------|-----------|
| DWN | Remi PATIN | 12-JUN-02 |
| CHK | Jacques LALANGE | 12-JUN-02 |
| APVD | Jean Jacques REVIL | 12-JUN-02 |
| PRODUCT SPEC | - | |
| APPLICATION SPEC | - | |
| WEIGHT | - | |

| | | | |
|--|-----------|--|---------------|
| tyco Electronics | | TYCO ELECTRONICS FRANCE SAS BP 39, 95301 CERGY-PONTOISE CEDEX | |
| NAME | | | |
| PL 5MM DOUBLE VERROUILLAGE (CAP HSG 5MM DOUBLE LOCKING) | | | |
| SIZE | CAGE CODE | DRAWING NO | RESTRICTED TO |
| A3 | 00779 | C- 144836 | - |

CUSTOMER DRAWING SCALE 2:1 SHEET 1 OF 2 REV B

C

B

A

| | | | | | |
|--|------------|---------------------------|--|------------|---------------------------|
| | 5-144836-4 | BLUE (BLEU) 6-144836-4 | | 5-144836-5 | BLUE (BLEU) 6-144836-5 |
| | 7-144836-4 | VIOLET | | 7-144836-5 | VIOLET |
| | 8-144836-4 | GRAY (GRIS) | | 8-144836-5 | GRAY (GRIS) |
| | 9-144836-4 | WHITE (BLANC) | | 9-144836-5 | WHITE (BLANC) |

| 7 POSITIONS | | 8 POSITIONS | | 9 POSITIONS | | 10 POSITIONS | |
|-------------|------------------------------|-------------|------------------------------|-------------|------------------------------|--------------|------------------------------|
| | BLACK (NOIR) 0-144836-7 | | BLACK (NOIR) 0-144836-8 | | BLACK (NOIR) 0-144836-9 | | BLACK (NOIR) 0-144836-0 |
| | BROWN (MARRON) 1-144836-7 | | BROWN (MARRON) 1-144836-8 | | BROWN (MARRON) 1-144836-9 | | BROWN (MARRON) 1-144836-0 |
| | RED (ROUGE) 2-144836-7 | | RED (ROUGE) 2-144836-8 | | RED (ROUGE) 2-144836-9 | | RED (ROUGE) 2-144836-0 |
| | ORANGE 3-144836-7 | | ORANGE 3-144836-8 | | ORANGE 3-144836-9 | | ORANGE 3-144836-0 |
| | YELLOW (JAUNE) 4-144836-7 | | YELLOW (JAUNE) 4-144836-8 | | YELLOW (JAUNE) 4-144836-9 | | YELLOW (JAUNE) 4-144836-0 |
| | GREEN (VERT) 5-144836-7 | | GREEN (VERT) 5-144836-8 | | GREEN (VERT) 5-144836-9 | | GREEN (VERT) 5-144836-0 |
| | BLUE (BLEU) 6-144836-7 | | BLUE (BLEU) 6-144836-8 | | BLUE (BLEU) 6-144836-9 | | BLUE (BLEU) 6-144836-0 |
| | VIOLET 7-144836-7 | | VIOLET 7-144836-8 | | VIOLET 7-144836-9 | | VIOLET 7-144836-0 |
| | GRAY (GRIS) 8-144836-7 | | GRAY (GRIS) 8-144836-8 | | GRAY (GRIS) 8-144836-9 | | GRAY (GRIS) 8-144836-0 |
| | WHITE (BLANC) 9-144836-7 | | WHITE (BLANC) 9-144836-8 | | WHITE (BLANC) 9-144836-9 | | WHITE (BLANC) 9-144836-0 |

| 12 POSITIONS | |
|--------------|------------------------------|
| | BLACK (NOIR) 0-144837-2 |
| | BROWN (MARRON) 1-144837-2 |
| | RED (ROUGE) 2-144837-2 |
| | ORANGE 3-144837-2 |
| | YELLOW (JAUNE) 4-144837-2 |
| | GREEN (VERT) 5-144837-2 |
| | BLUE (BLEU) 6-144837-2 |
| | VIOLET 7-144837-2 |
| | GRAY (GRIS) 8-144837-2 |
| | WHITE (BLANC) 9-144837-2 |

| | |
|---------------------------------------|---------------------------------------|
| THIS DRAWING IS A CONTROLLED DOCUMENT | |
| DIMENSIONS: mm | TOLERANCES UNLESS OTHERWISE SPECIFIED |
| | 0-PLC ± |
| | 1-PLC ±0.3 |
| | 2-PLC ± |
| | 3-PLC ± |
| | 4-PLC ± |
| | ANGLES ±5 |
| MATERIAL VOIR FEUILLE 1 | FINISH - |

单击下面可查看定价，库存，交付和生命周期等信息

[>>TE Connectivity\(泰科\)](#)