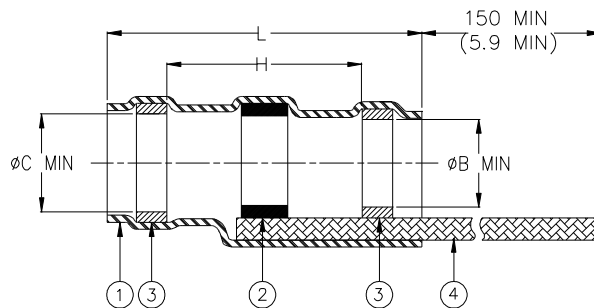


## CUSTOMER DRAWING



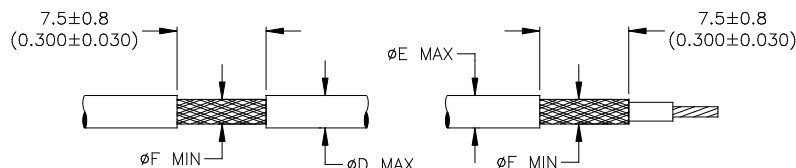
| Product Name | Component Dimensions |                     |                 |                 |                 | Shall Accommodate Cable with Dimensions |                 |                 |
|--------------|----------------------|---------------------|-----------------|-----------------|-----------------|---|-----------------|-----------------|
|              | Ident. Code          | L±1.75<br>(L±0.070) | Ø B<br>min      | Ø C<br>min      | H<br>min        | Ø E<br>max                              | Ø F<br>min      | Ø D<br>max      |
| S03-01-R     | S0301R               | 16.50<br>(0.650)    | 1.90<br>(0.075) | 2.65<br>(0.105) | 8.25<br>(0.325) | 2.65<br>(0.105)                         | 0.90<br>(0.035) | 1.90<br>(0.075) |
| S03-02-R     | S0302R               | 16.50<br>(0.650)    | 2.65<br>(0.105) | 3.68<br>(0.145) | 8.25<br>(0.325) | 3.68<br>(0.145)                         | 1.40<br>(0.055) | 2.65<br>(0.105) |
| S03-03-R     | S0303R               | 16.50<br>(0.650)    | 4.30<br>(0.170) | 5.08<br>(0.200) | 8.25<br>(0.325) | 5.08<br>(0.200)                         | 2.15<br>(0.085) | 4.30<br>(0.170) |
| S03-04-R     | S0304R               | 19.10<br>(0.750)    | 5.95<br>(0.235) | 6.45<br>(0.255) | 8.25<br>(0.325) | 6.45<br>(0.255)                         | 3.30<br>(0.130) | 5.95<br>(0.235) |
| S03-05-R     | S0305R               | 19.10<br>(0.750)    | 7.00<br>(0.275) | 7.60<br>(0.300) | 8.25<br>(0.325) | 7.60<br>(0.300)                         | 4.30<br>(0.170) | 7.00<br>(0.275) |


### MATERIALS

- INSULATION SLEEVE: Heat-shrinkable, transparent blue, radiation cross-linked modified polyvinylidene fluoride.
- SOLDER PREFORM WITH FLUX AND THERMAL INDICATOR  
 SOLDER: TYPE Sn63 per ANSI-J-STD-006.  
 FLUX: TYPE ROL1 per ANSI-J-STD-004.  
 THERMAL INDICATOR: Color change violet to colorless.
- MELTABLE RINGS: Stabilized thermoplastic. Color: blue.
- PRE-INSTALLED BRAID: Tin-plated copper strands. CMA 640.

### APPLICATION

- These parts are designed to provide an environment protected shield termination on cables, rated for 125°C minimum, meeting the dimensional criteria listed and having tin or silver-plated shields and insulation compatible with the insert material. For compatible insulations, see MIL-S-83519/2 or consult TE Connectivity.
- When installed per TE Connectivity /Raychem process standard RCPS-100-70, assemblies will meet those requirements of TE Connectivity /Raychem Specification RT-1404 and MIL-S-83519/2, which do not require electrical testing while parts are immersed in water.
- Temperature range: -55°C to +150°C.
- Parts shall be marked with identification code per table. For best results prepare the cable as shown below.



|  |   |  |  |                           |                  |
|--|---|--|--|---------------------------|------------------|
|                     |   | <b>Raychem<br/>DEVICES</b>   | TITLE:<br><b>SOLDERSLEEVE* DEVICES SHIELD<br/>TERMINATION WITH PRE-INSTALLED<br/>BRAID</b> |                           |                  |
| Unless otherwise specified dimensions are in millimeters.<br>[Inches dimensions are shown in brackets] |   |  | DOCUMENT NO.:  |                           |                  |
|  |   |  | <b>S03-01/-05-R</b>  |                           |                  |
| TOLERANCES:<br>0.00 N/A<br>0.0 N/A<br>0 N/A  | ANGLES: N/A<br><br>ROUGHNESS IN<br>MICRON | TE Connectivity reserves the right to<br>amend this drawing at any time. Users<br>should evaluate the suitability of the<br>product for their application. | REV :<br><br>E   | DATE :<br><br>30-Mar-2020 |                  |
| PREPARED BY:<br><b>M. FORONDA</b>  | CAGE CODE:<br>06090                       | ECO:<br>ECO-20-004510  | SCALE:<br>NTS  | SIZE:<br>A                | SHEET:<br>1 of 1 |

© 2020 TE Connectivity Ltd. Family of Companies. All Rights Reserved.

If this document is printed it becomes uncontrolled. Check for the latest revision.

\*TE Connectivity, TE connectivity (logo), Raychem,

单击下面可查看定价，库存，交付和生命周期等信息

[>>TE Connectivity\(泰科\)](#)