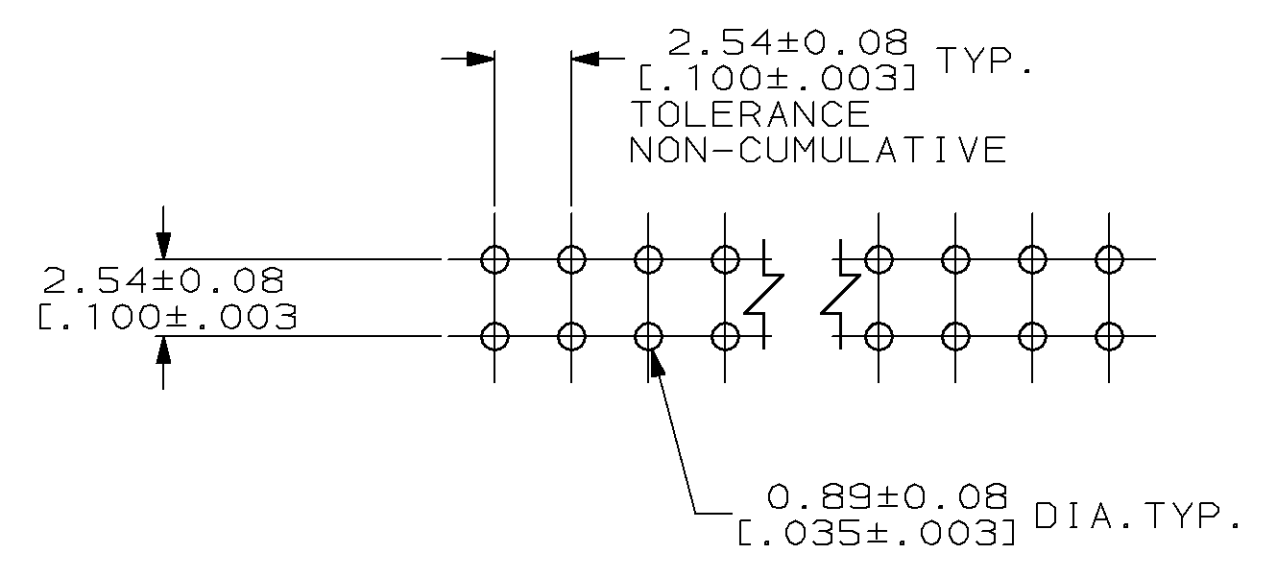
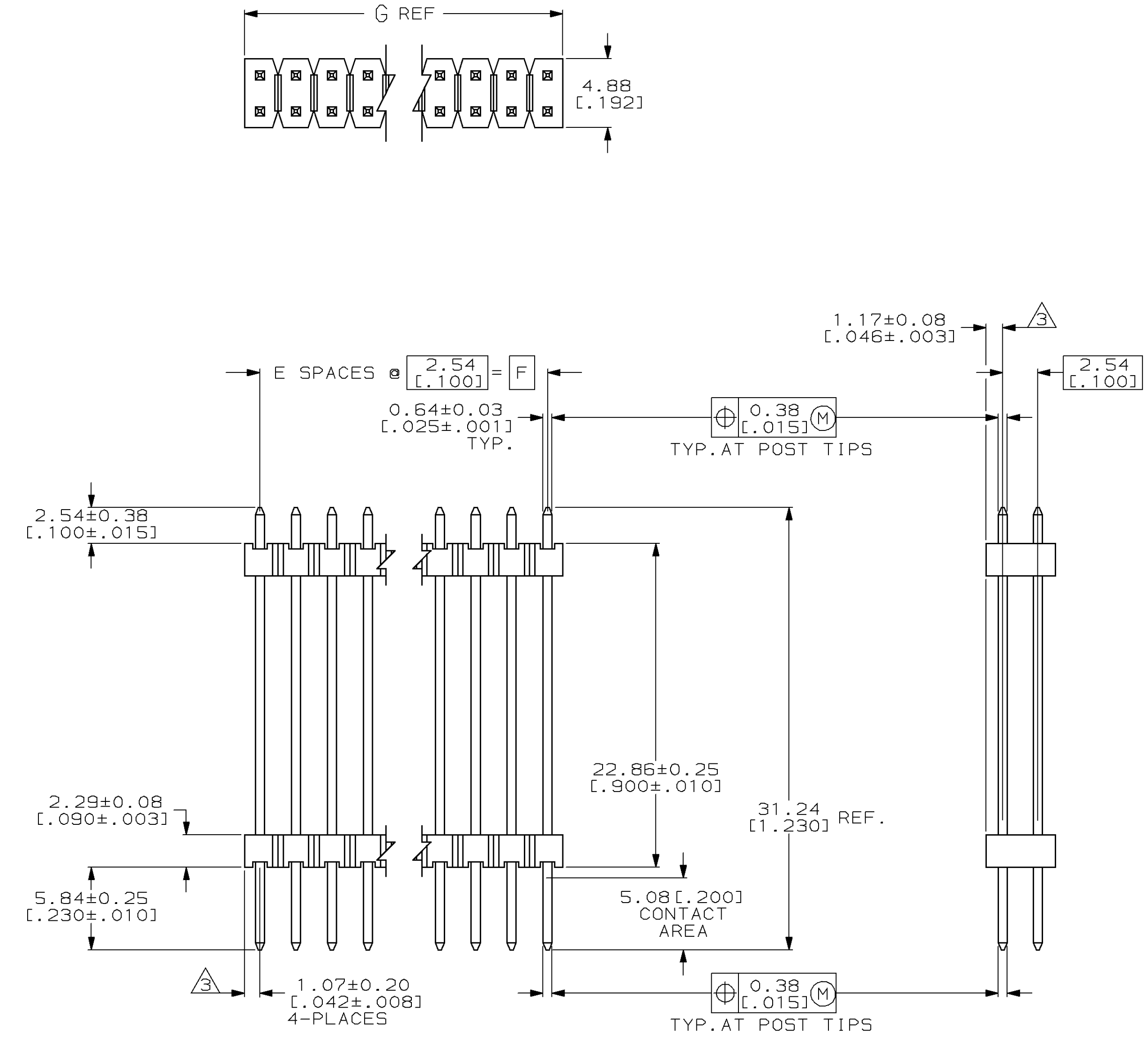


LOC		DIST		REVISONS			
AD	39	P	LTR	DESCRIPTION	DATE	DMN	APVD
		0		RELEASED	11-NOV-96	EB	GD

- ASSEMBLY MAY BE BROKEN TO THE DESIRED NUMBER OF POSITIONS
- TRUE POSITION TOLERANCE OF THE POST TIPS APPLIES WHEN THE HEADER IS HELD FLAT AGAINST THE PRINTED CIRCUIT BOARD
- THE NOTED DIMENSIONS APPLY AT THE INTERSECTION OF THE POST AND HOUSING
- HOUSING: FLAME RETARDANT THERMOPLASTIC; COLOR: BLACK.
- FINISH: 0.000381 [0.000015] GOLD ON CONTACT AREA, 0.00254-0.00508 [0.000100-0.000200] MATTE TIN-LEAD ON SOLDER TAIL, 0.00127 [0.000050] NICKEL ENTIRE POST.



RECOMMENDED HOLE LAYOUT

24.99 [0.984]	22.86 [0.900]	9	20	146520-2
58.01 [2.284]	55.88 [2.200]	22	46	146520-1
G	F	E	NO. OF POSITIONS	PART NUMBER

<small>THIS DRAWING IS A CONTROLLED DOCUMENT FOR AMP INCORPORATED. IT IS SUBJECT TO CHANGE AND THE CONTROLLING ENGINEERING DEPARTMENT SHOULD BE CONTACTED FOR THE LATEST REVISION.</small>		DMN: BRANDBERG 11-NOV-96 CHK: G. DUBNICZKI 11-NOV-96 APVD: G. DUBNICZKI 11-NOV-96	AMP Incorporated Harrisburg, PA 17105-3508
DIMENSIONS: mm (INCH)	TOLERANCES UNLESS OTHERWISE SPECIFIED: 0 PLC ±- 1 PLC ±- 2 PLC ±0.51 [0.02] 3 PLC ±0.127 [0.005] 4 PLC ±0.0127 [0.0005] ANGLES ±-	NAME: HEADER ASSEMBLY, MOD II, STACKING, DOUBLE ROW, .025 SQ. POST, UNSHROUDED PRODUCT SPEC: - APPLICATION SPEC: -	SIZE: A1 CAGE CODE: 00779 DRAWING NO: 146520
MATERIAL: Δ	FINISH: Δ	WEIGHT: -	SCALE: 4:1
CUSTOMER DRAWING		SHEET: 1 OF 1	REV: 0

单击下面可查看定价，库存，交付和生命周期等信息

[>>TE Connectivity\(泰科\)](#)