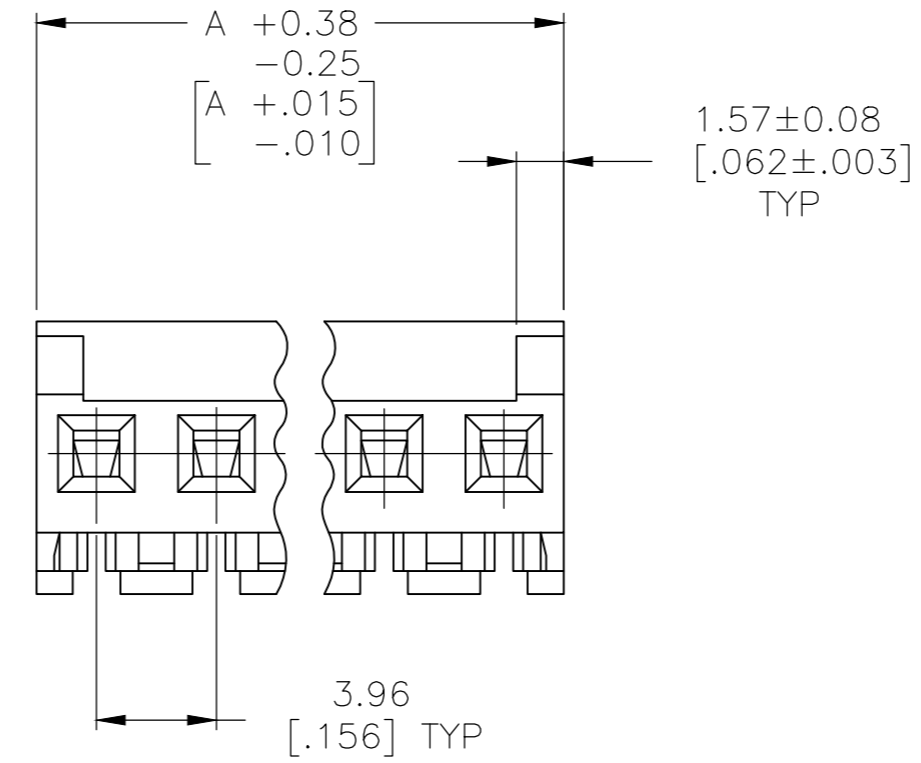
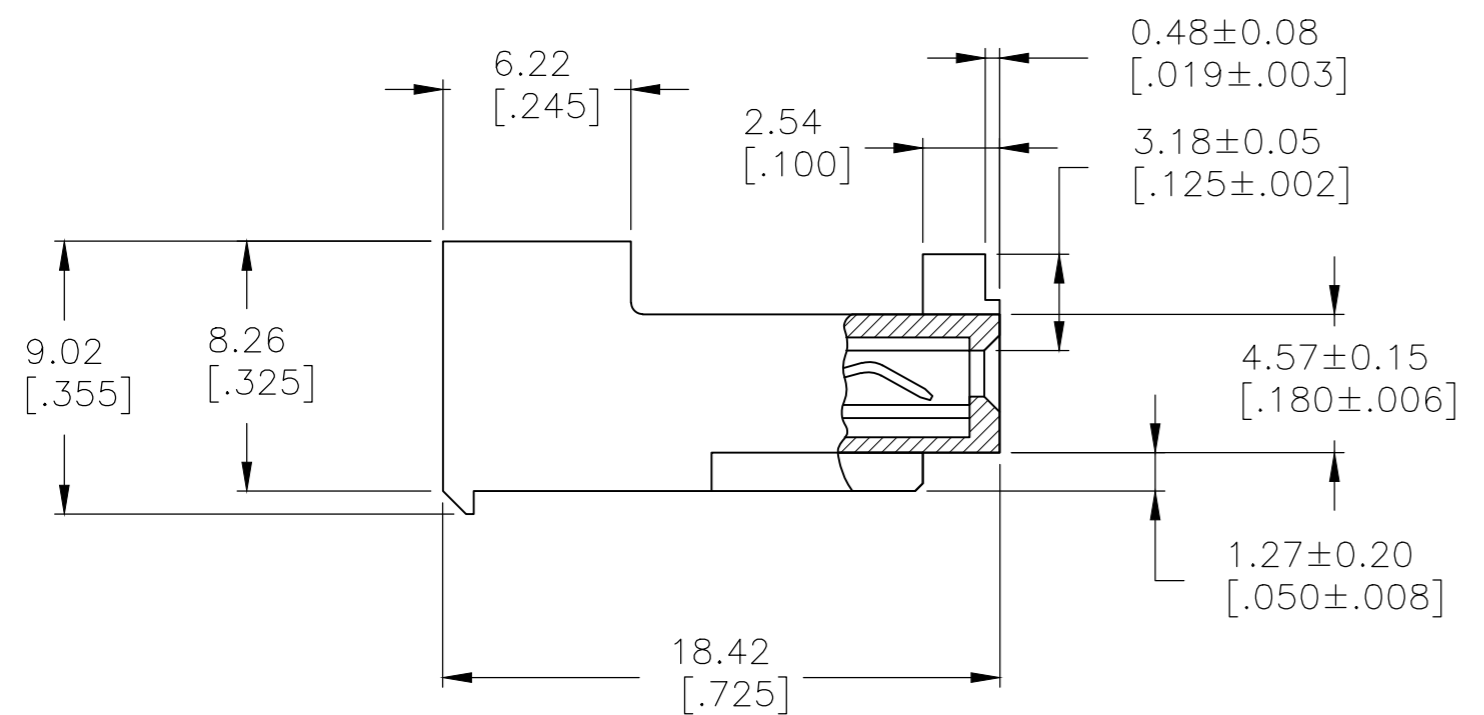
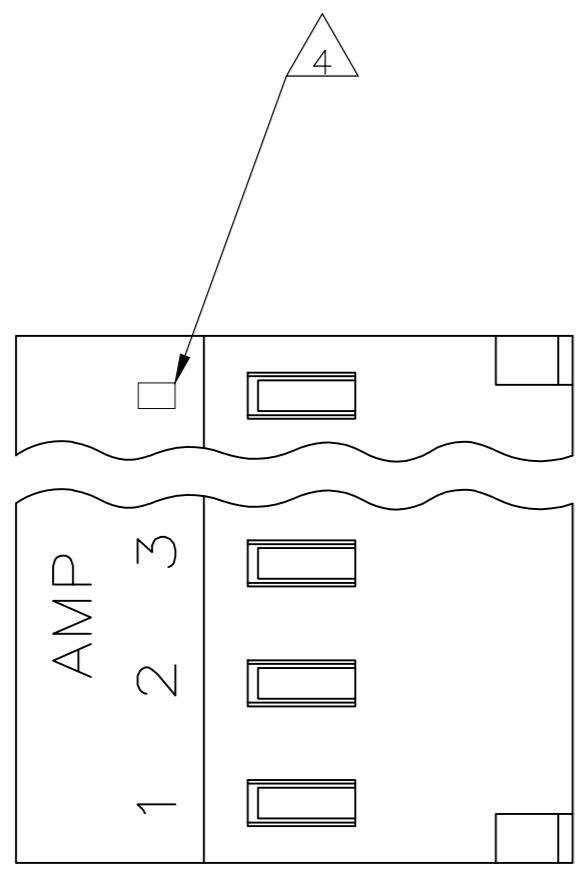


THIS DRAWING IS UNPUBLISHED. RELEASED FOR PUBLICATION
 © COPYRIGHT - By - TE CONNECTIVITY ALL RIGHTS RESERVED.

LOC		DIST		REVISIONS			
P	LTR	DESCRIPTION		DATE	DWN	APVD	
CM	54	E		REVISED PER ECR-20-000814	26MAY2020	PC SW	

- 1 MATERIAL: CONNECTOR - NYLON UL94V-2 (ORANGE).
 CONTACTS - 0.30 [.012] THICK COPPER ALLOY (BRIGHT-TIN LEAD 0.00203 [.000080] MIN THK FOR CONTACTS 644461-2 THRU 1-644461-4, MATTE WHISKER MITIGATED TIN 0.00203 [.000080] MIN THICK FOR CONTACTS 3-644461-2 THRU 4-644461-4)
- 2 CONTACTS ACCEPT 18 AWG WIRE WITH 2.41 [.095] MAX INSULATION DIAMETER.
- 3 CONTACTS MUST ACCEPT 1.14±0.03 [.045±.001] SQUARE POST AND REMAIN LOCKED IN POSITION.
- 4 IDENTIFICATION NUMBER FOR LAST CIRCUIT MAY NOT APPEAR ON ALL ASSEMBLIES.
- 5 DIMENSIONS IN BRACKETS ARE IN INCHES.
- 6 HOUSING FEATURES ARE: CLOSED END WITHOUT LOCKING RAMP AND WITH POLARIZING TAB.3
- 7 OBSOLETE PARTS: OBSOLETE CIS STREAMLINING PER D.RENAUD/D.SINISI
- 8 OBSOLETE PARTS



	DIM A	NO. OF CIRCUITS	PART NO.	
	55.47 [2.184]	14	4-644461-4	
	51.51 [2.028]	13	4-644461-3	
	47.55 [1.872]	12	4-644461-2	
	43.59 [1.716]	11	4-644461-1	
	39.62 [1.560]	10	4-644461-0	
	35.66 [1.404]	9	3-644461-9	
	31.70 [1.248]	8	3-644461-8	
	27.74 [1.092]	7	3-644461-7	
	23.77 [.936]	6	3-644461-6	
	19.81 [.780]	5	3-644461-5	
	15.85 [.624]	4	3-644461-4	
	11.89 [.468]	3	3-644461-3	
	7.92 [.312]	2	3-644461-2	
7	SUPERCEDED	55.47 [2.184]	14	1-644461-4
7	OBSOLETE	51.51 [2.028]	13	1-644461-3
7	SUPERCEDED	47.55 [1.872]	12	1-644461-2
7	SUPERCEDED	43.59 [1.716]	11	1-644461-1
8	SUPERCEDED	39.62 [1.560]	10	1-644461-0
8	SUPERCEDED	35.66 [1.404]	9	644461-9
8	SUPERCEDED	31.70 [1.248]	8	644461-8
8	SUPERCEDED	27.74 [1.092]	7	644461-7
8	SUPERCEDED	23.77 [.936]	6	644461-6
8	SUPERCEDED	19.81 [.780]	5	644461-5
8	SUPERCEDED	15.85 [.624]	4	644461-4
8	SUPERCEDED	11.89 [.468]	3	644461-3
8	SUPERCEDED	7.92 [.312]	2	644461-2

THIS DRAWING IS A CONTROLLED DOCUMENT.		DWN B. LEWIS 12FEB91	TE Connectivity	
DIMENSIONS: mm [INCHES]		CHK R. SWING 12FEB91	MTA 156 CONNECTOR ASSEMBLY, 18 AWG, STANDARD	
TOLERANCES UNLESS OTHERWISE SPECIFIED:		APVD D.R. CLARK 20FEB91	NAME	
0 PLC ± -	1 PLC ± -	PRODUCT SPEC 108-1051	SIZE	
2 PLC ± -	3 PLC ± -	APPLICATION SPEC 114-1020	CAGE CODE 00779	DRAWING NO 644461
4 PLC ± -	ANGLES ± -	MATERIAL	WEIGHT	RESTRICTED TO
FINISH		CUSTOMER DRAWING		
SCALE 4:1		SHEET 1 OF 1		REV E

单击下面可查看定价，库存，交付和生命周期等信息

[>>TE Connectivity\(泰科\)](#)