

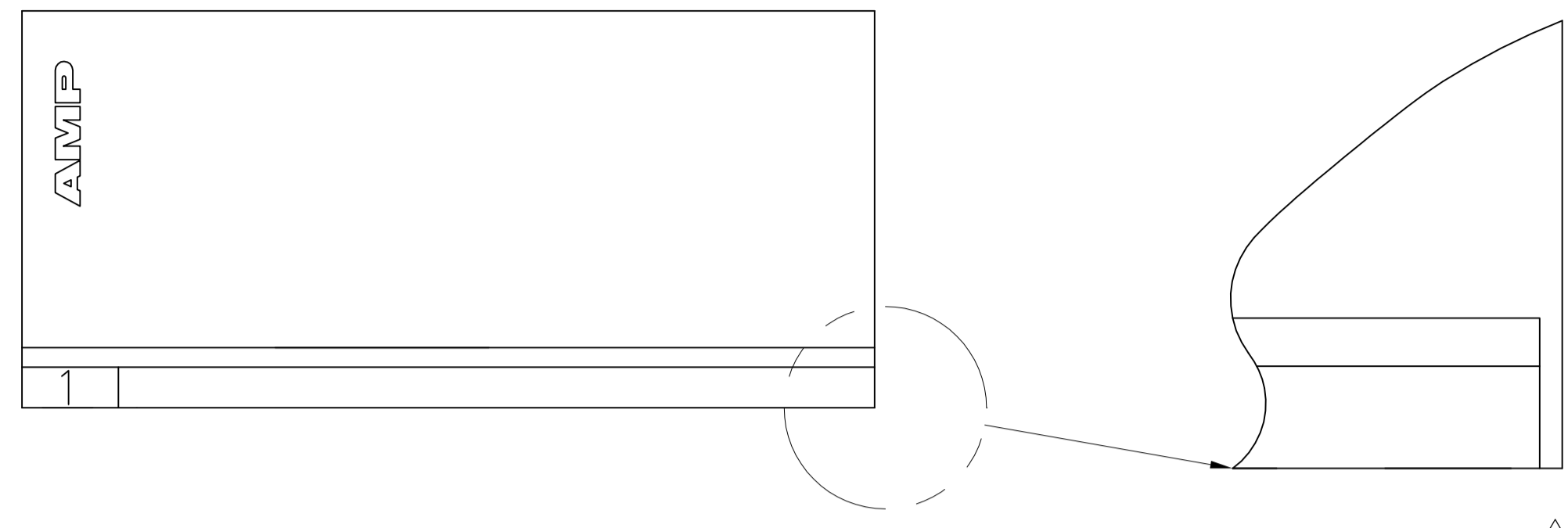
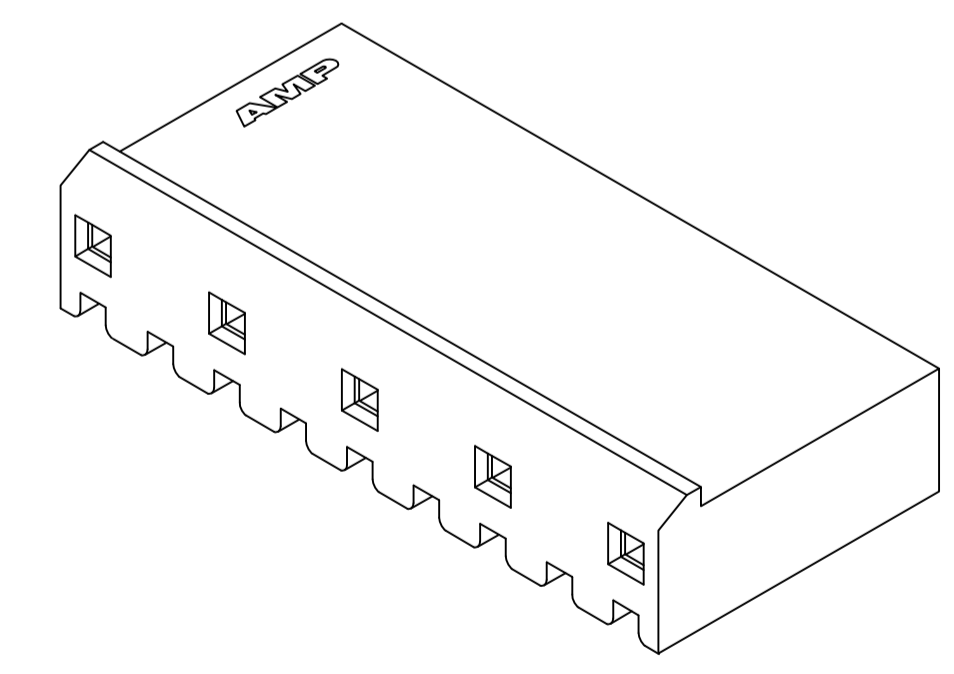
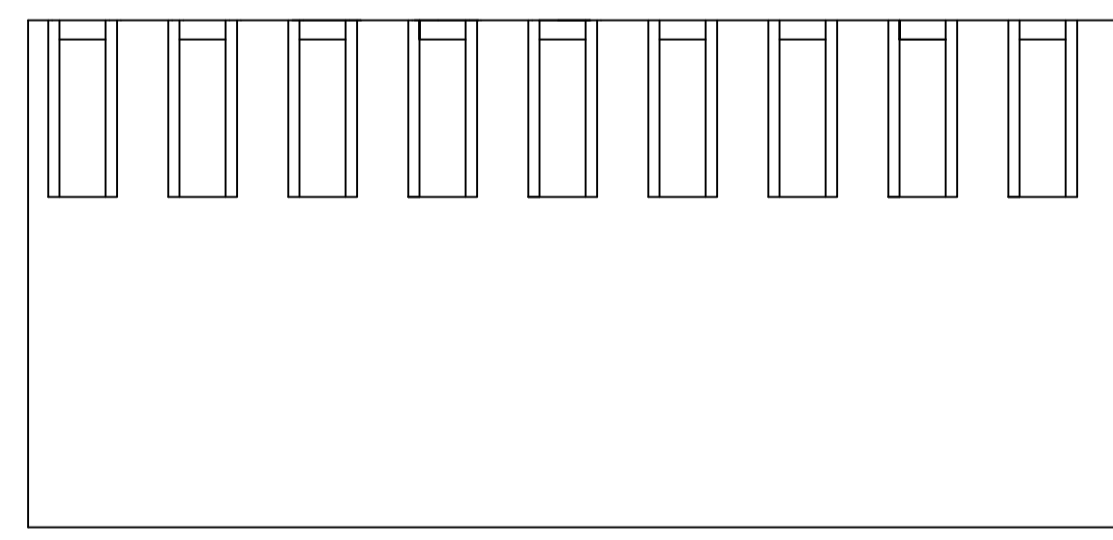
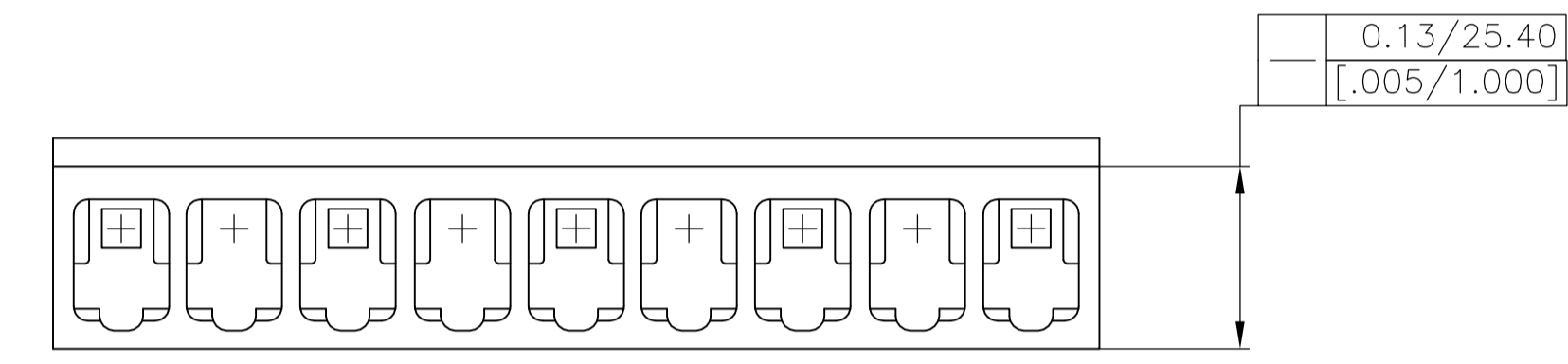
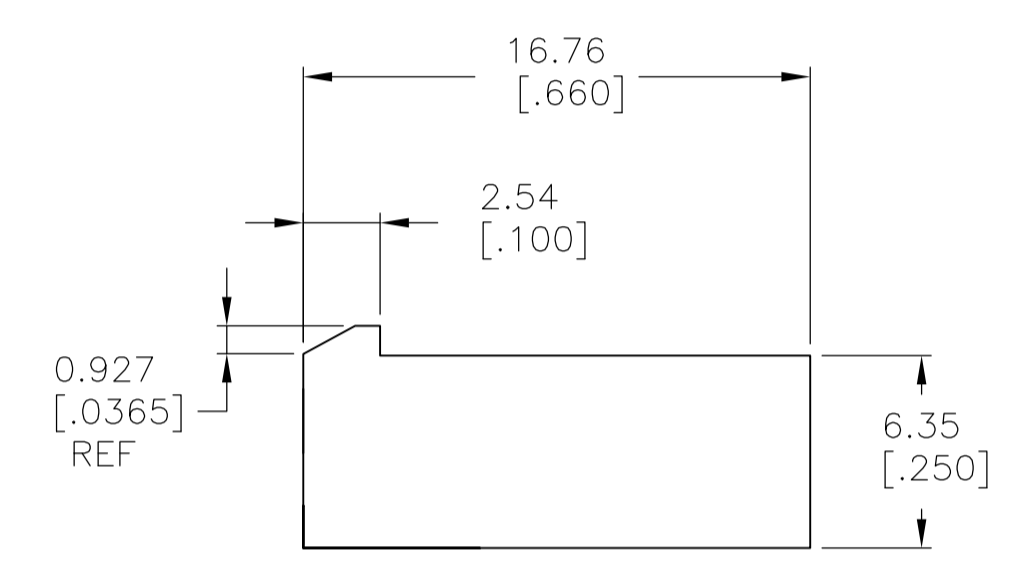
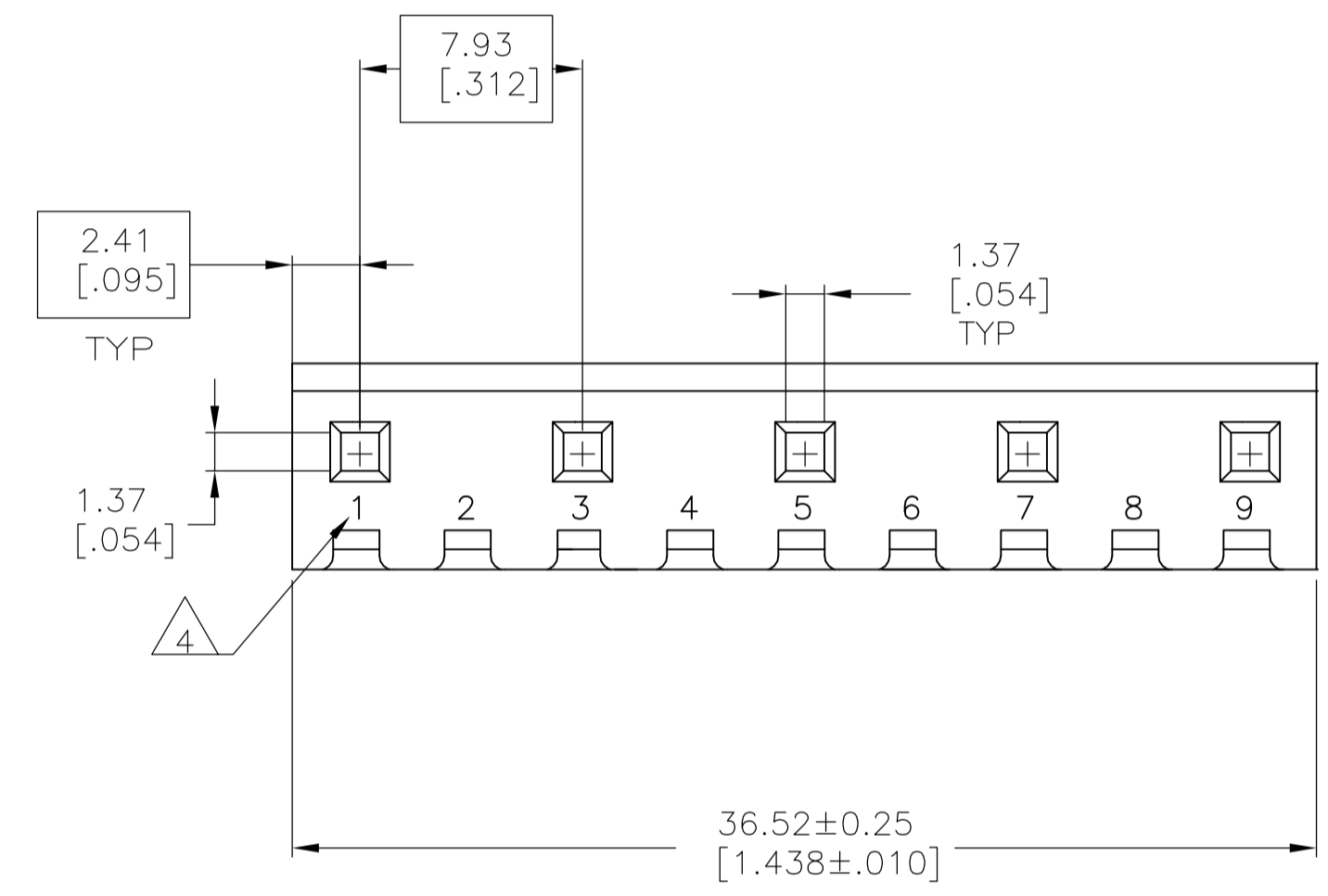


LOC	DIST	REVISIONS				
CM	00	REV	DESCRIPTION	DATE	BY	APPV
		B	REVISED PER ECO-12-007807	06AUG12	KH	SM

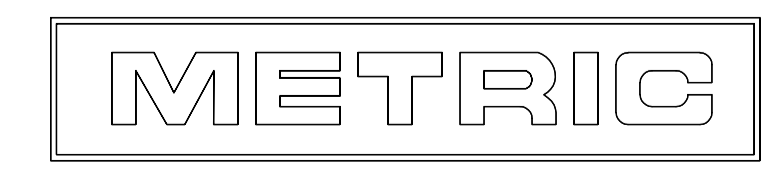
- 1 UNIT ACCEPTS 1.14 [.045] SQUARE OR ROUND POST.
- 2 UNIT ACCEPTS STANDARD SL-156 CONTACTS.
- 3 UNIT ACCEPTS KEYING PLUG 640254-1 AND KEYING PIN 640255-1.
- 4  CIRCUIT I.D. NUMBER(S), TO BE LOCATED SEQUENTIALLY AS SHOWN.
- 5 DIMENSIONS IN BRACKETS ARE IN INCHES.
- 6  OPTIONAL CONSTRUCTION (BOTH CORNERS) UP TO 0.38[.015].
- 7 ACCEPTS UP TO .110 INCH INSULATION WIRE.



SCALE 10:1 



3-DIMENSIONAL MODEL NTS



2,4,6,8	9	1744138-9
CIRCUIT NO BLOCKED	NO OF CIRCUITS	PART

THIS DRAWING IS A CONTROLLED DOCUMENT.		DIN K WHITAKER 16NOV2005		STE TE Connectivity	
DIMENSIONS: mm [INCHES]		CHK D BOSSI 16NOV2005		NAME	
TOLERANCES UNLESS OTHERWISE SPECIFIED:		APPV D BOSSI 16NOV2005		HOUSING WITH LOCKING RAMP, SL-156, FOR LARGE WIRE INSULATION	
0. PLC ± -	1. PLC ± -	PRODUCT SPEC		SIZE	
2. PLC ± -	3. PLC ± 0.13 [.005]	APPLICATION SPEC		CAGE CODE	
4. PLC ± -	ANGLES ± 0° 30'	WEIGHT		DRAWING NO	
MATERIAL NYLON,UL94V-0,NAT		FINISH -		A1 00779 C=1744138	
CUSTOMER DRAWING		SCALE 4:1		SHEET 1 OF 1 REV B	

单击下面可查看定价，库存，交付和生命周期等信息

[>>TE Connectivity\(泰科\)](#)