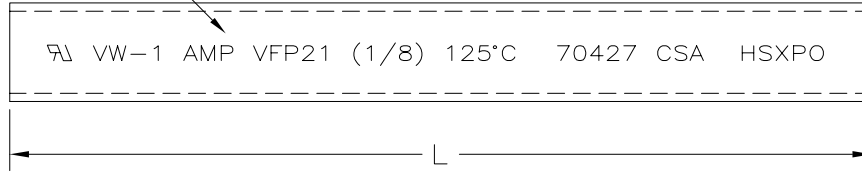


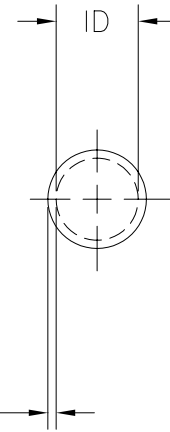
1

3.18 [.125] MINIMUM EXPANDED
1.57 [.062] MAXIMUM RECOVERED



VW-1 AMP VFP21 (1/8) 125°C 70427 CSA HSXPO

0.51 [.020] NOMINAL WALL THICKNESS FULLY RECOVERED



REVISIONS		
LTR	DESCRIPTION	DATE
S	REVISED PER DCR NO R060224	10/13/2006

1 TUBING VFP21 MARKED AS SHOWN IN WHITE CHARACTERS ON SURFACE INDICATED

2. TUBING VFP21 IS UL RECOGNIZED, IS RATED 125°C [257°F], 600 V AND MEETS VW-1 FLAME TEST.

3. TUBING VFP21 IS CSA CERTIFIED AND MEETS VW-1 FLAME TEST.

4. TUBING FP21 IS UNMARKED AND MEETS REQUIREMENTS OF AMS-DTL-23053/5-104-0

4	4	152.4 m [500 ft] MINIMUM	2-603324-2
		50.8 ± 3.05 [2.00 ± .12]	2-603324-0
		1.22 m [4 ft] MINIMUM	1-603324-1
1	2 3	152.4 m [500 ft] MINIMUM	603324-5
		304.8 ± 6.35 [12.00 ± .25]	603324-4
		304.8 m [1000 ft] MINIMUM	603324-2
		1.22 m [4 ft] MINIMUM	603324-1
MARKING	NOTES	LENGTH L	PART NUMBER

5. WEIGHT PER LINEAR FOOT/304.8 mm:
1.09 g/.0024 lbs.

6. MATERIAL: BLACK POLYOLEFIN

If this document is printed it becomes uncontrolled. Check for the latest revision

SPECIFICATION CONTROL DRAWING

UNLESS OTHERWISE SPECIFIED DIMENSIONS ARE IN mm. INCH DIMENSIONS ARE IN BRACKETS.	DRAWN	DATE	Tyco Electronics Corporation 300 Constitution Drive Menlo Park, CA. USA 94025	
	UNGUYEN	10/13/2006		
DECIMALS	RPN		TITLE	
.XX ± .01 [.0004 in]	R060224		AMPSULATION VFP21 AND FP21 1/8 INCH ID, BLACK	
.X ± .1 [.004 in]	THIRD ANGLE PROJECTION		SIZE	CODE IDENT. NO.
ANGLES			B	06090
.X ± 0.5 DEG			DWG. NO.	603324
			DO NOT SCALE THIS DRAWING	
			SHEET 1 OF 1	

单击下面可查看定价，库存，交付和生命周期等信息

[>>TE Connectivity\(泰科\)](#)