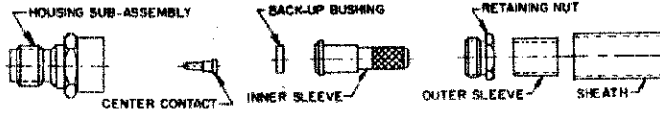


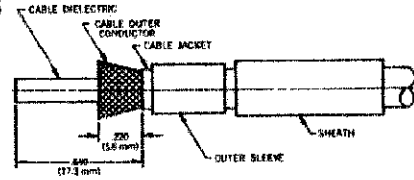
| CONNECTOR TYPE                              | CABLE TYPE           | TOOLS REQUIRED:   |
|---|----------------------|---|
| OSM Straight Cable Jack<br>Crimp Attachment | RG 58/U,<br>141, 303 | Center Contact Holder 2098-5221-10 (T4578)<br>Crimp Tool 2098-0105-54 Die No. B |

### CONNECTOR

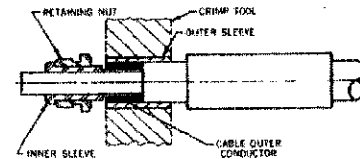


### ASSEMBLY OPERATIONS

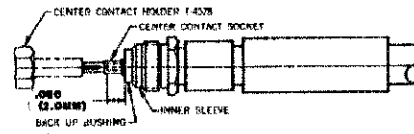
- 1.0 PREPARE COAXIAL CABLE END**
- 1.1 PLACE SHEATH AND OUTER SLEEVE ON CABLE.
  - 1.2 REMOVE END PORTION OF CABLE JACKET TO EXPOSE CABLE OUTER CONDUCTOR.
  - 1.3 TRIM OUTER CONDUCTOR TO LENGTH.
  - 1.4 FLARE OUTER CONDUCTOR.



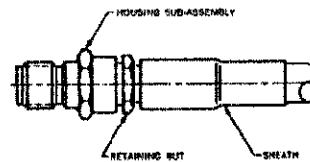
- 2.0 CRIMP CABLE TO INNER SLEEVE**
- 2.1 INSERT INNER SLEEVE INTO RETAINING NUT.
  - 2.2 POSITION LOOSE UNIT ON DIELECTRIC AS SHOWN.
  - 2.3 SLIDE OUTER SLEEVE OVER FLARED PORTION OF OUTER CONDUCTOR.
  - 2.4 HOLD RETAINER UNIT SEATED AND CRIMP OUTER SLEEVE IN PLACE. (SEE NOTE FOR SUGGESTED CRIMP TOOL SELECTION).
  - 2.5 TRIM AND REMOVE EXCESS OUTER CONDUCTOR STRANDS.



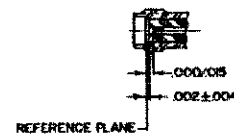
- 3.0 SOLDER CENTER CONTACT TO CABLE INNER CONDUCTOR**
- 3.1 TRIM CABLE DIELECTRIC FLUSH WITH END OF INNER SLEEVE TO EXPOSE INNER CONDUCTOR.
  - 3.2 PLACE BACK UP BUSHING ON INNER CONDUCTOR.
  - 3.3 TRIM AND DE-BURR INNER CONDUCTOR PROJECTION TO LENGTH AS SHOWN.
  - 3.4 TIN INNER CONDUCTOR.
  - 3.5 PLACE CENTER CONTACT IN HOLDER.
  - 3.6 HEAT CENTER CONTACT WITH SOLDERING IRON AND CAREFULLY PUSH IT OVER INNER CONDUCTOR TO REST FIRMLY AGAINST BUSHING.
  - 3.7 REMOVE EXCESS SOLDER OR SPLATTER.



- 4.0 SECURE HOUSING TO RETAINING NUT AND SHRINK SHEATH**
- 4.1 CAREFULLY INSERT THE CENTER CONTACT INTO THE DIELECTRIC BUSHING I.D. OF THE HOUSING SUB-ASSEMBLY.
  - 4.2 ENGAGE THREADS OF RETAINING NUT TO HOUSING AND TORQUE TO 12-16 IN.-LBS.
  - 4.3 POSITION SHEATH OVER OUTER SLEEVE AS SHOWN.
  - 4.4 APPLY INDIRECT HEAT WITH THERMO GUN TO SHRINK SHEATH.



- 5.0 INSPECT COMPLETED ASSEMBLY**
- 5.1 ADHERENCE TO ASSEMBLY STEPS GIVEN SHOULD YIELD TOLERANCES SHOWN.



单击下面可查看定价，库存，交付和生命周期等信息

[>>TE Connectivity\(泰科\)](#)