

LOC	DIST	REV	DESCRIPTION	DATE	BY	APP'D
AG	0					
			REVISED PER ECO-13-019307	210DEC13	OL	SZ

1. USED IN AMP-DUAC/PL™ RECEPTACLE HOUSINGS. ONE REQUIRED PER HOUSING.

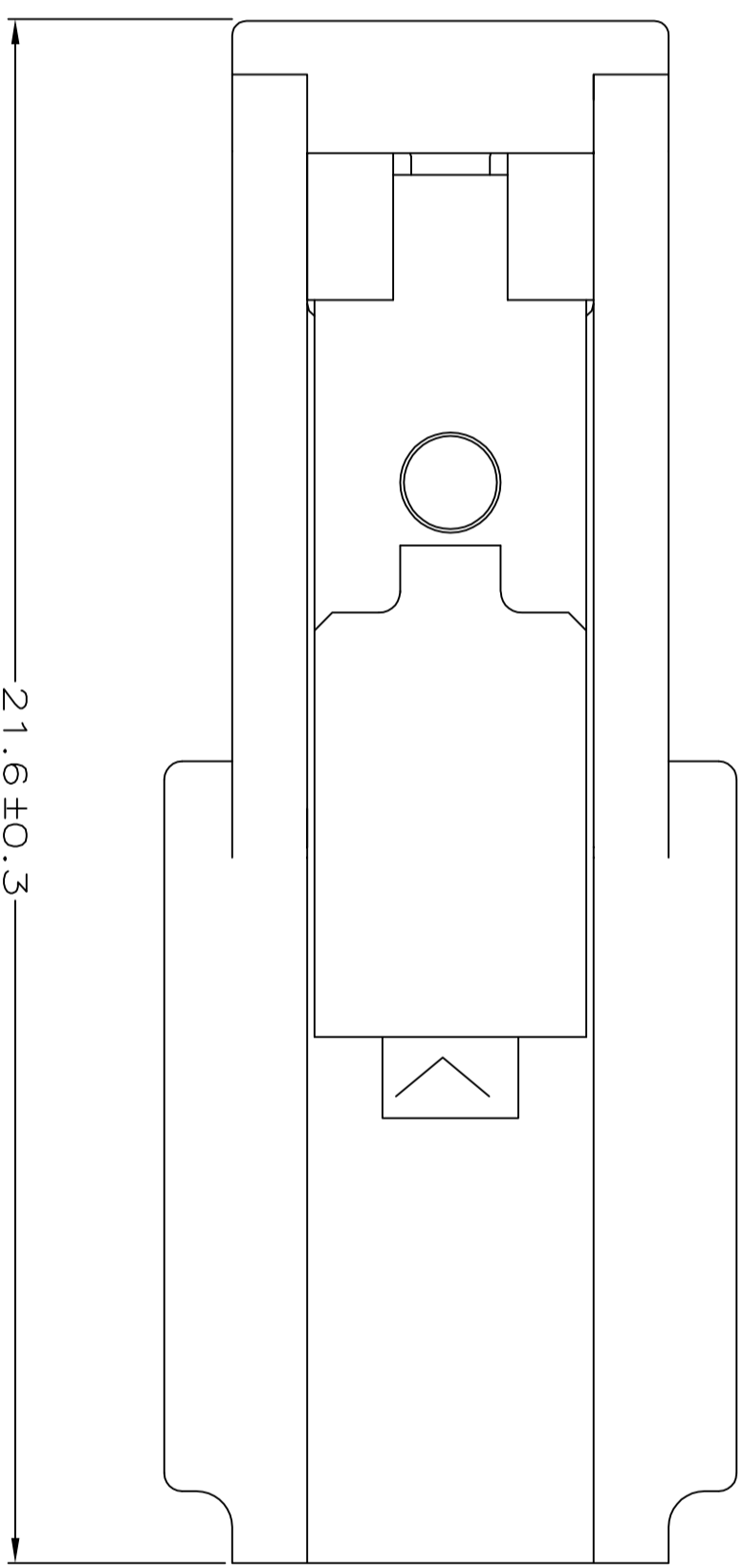
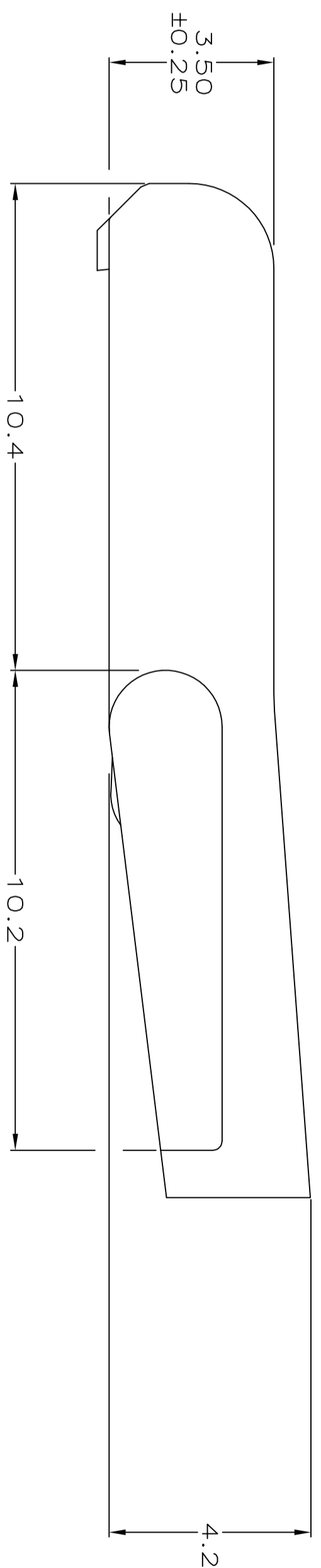
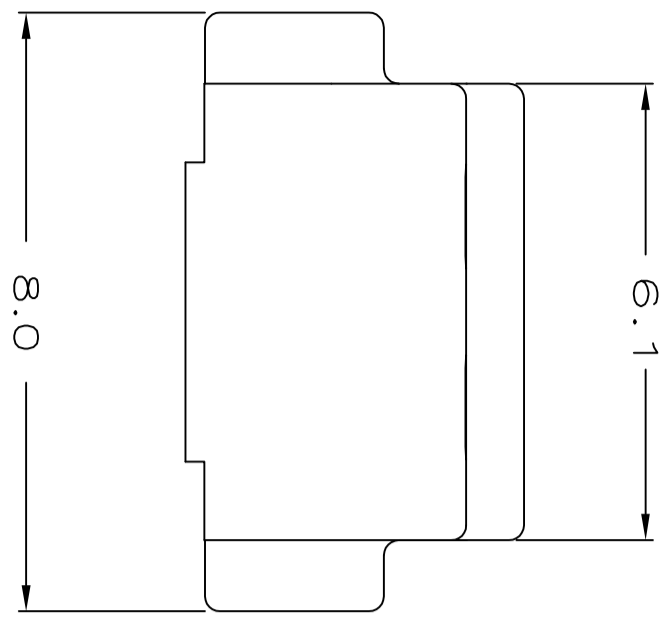
2. INSTALL LATCH ASSEMBLY AFTER CUSTOMER SUPPLIED BACKSHELL. (USE OF BACKSHELL IS OPTIONAL).

3. LATCH ASSEMBLY AVAILABLE WITH EXTENDED LEVER ARM, 794150-1.

Ⓐ MATERIAL: LATCH ARM - PBT, GLASS REINFORCED COLOR - NATURAL. SPRING - STAINLESS STEEL.

Ⓑ MATERIAL: LATCH ARM - PBT, GLASS REINFORCED COLOR - TERRACOTA SPRING - STAINLESS STEEL.

Ⓒ MATERIAL: LATCH ARM - PBT, GLASS REINFORCED COLOR - BLURPL SPRING - STAINLESS STEEL.



REV	DESCRIPTION	PART NUMBER
6		794150-3
5		794150-2
4		794150-1

THIS DRAWING IS A CONTROLLED DOCUMENT.

DMN	K. WHITTAKER	8-15-97
CHK	R. SWING	8-15-97
APP'D	E. BELLES	
PRODUCT SPEC	108-1646	
APPLICATION SPEC	114-6067	
WEIGHT	-	

**AMP** AMP Incorporated  
Harrisburg, PA 17105-3608

LATCH ASSEMBLY, STANDARD,  
AMP-DUAC/PL™ POWER CONNECTOR

SIZE: A2 CAGE CODE: 00779 DRAWING NO: 794150

RESTRICTED TO: CUSTOMER DRAWING

单击下面可查看定价，库存，交付和生命周期等信息

[>>TE Connectivity\(泰科\)](#)