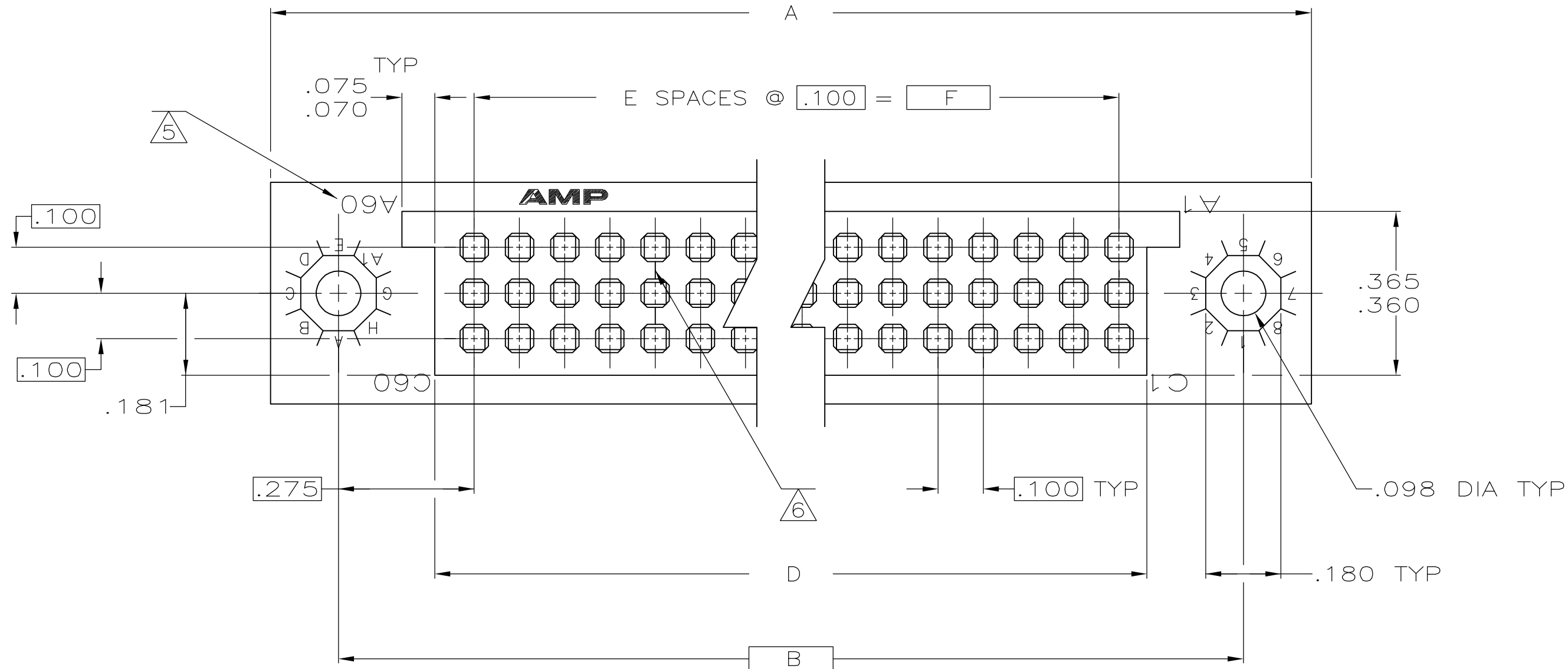
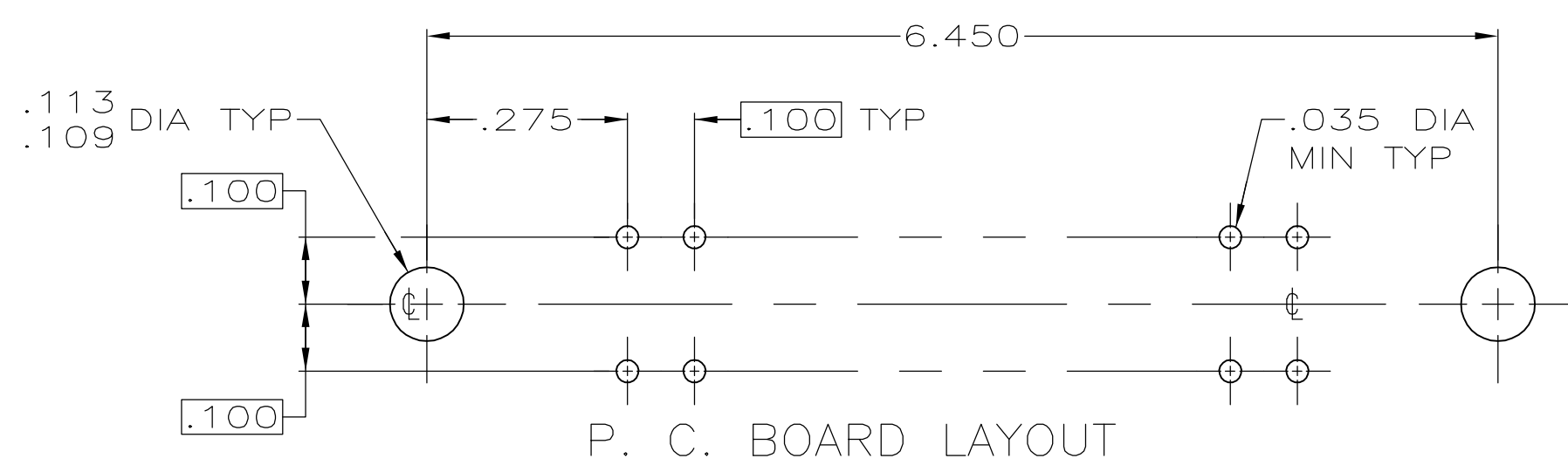
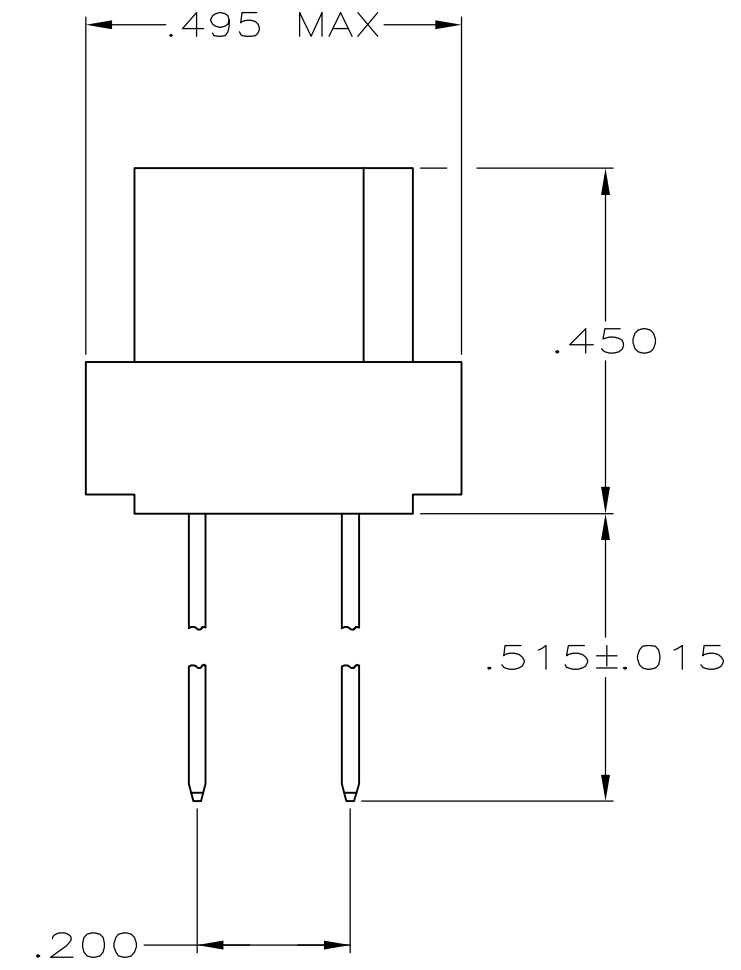
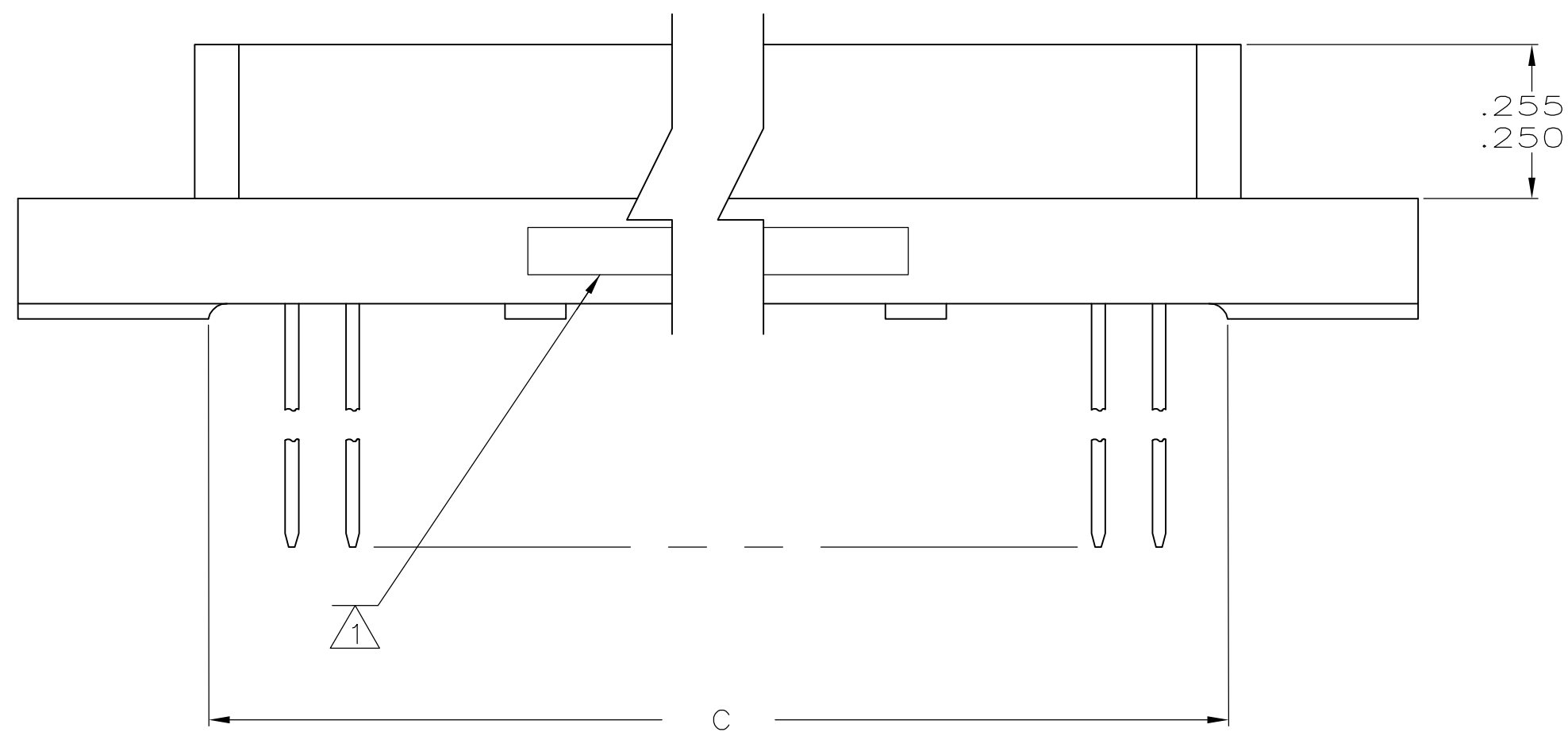


THIS DRAWING IS UNPUBLISHED. RELEASED FOR PUBLICATION
 © COPYRIGHT BY TYCO ELECTRONICS CORPORATION. ALL RIGHTS RESERVED.

| LOC | | DIST | | REVISIONS | | | |
|-----|-----|-------------|--|-----------------------|---------|------|----|
| P | LTR | DESCRIPTION | | DATE | DWN | APVD | |
| DF | F0 | C | | REV PER ECO 05-013558 | 12DEC05 | VF | CT |



- 1 (CUSTOMER P/N), AMP, DATE CODE, AMP P/N, MARKED THIS AREA.
- 2 HOUSING MATERIAL: POLYPHENYLENE SULFIDE, GST-40F PER MIL-M-24519.
- 3 CONTACT MATERIAL: BERYLLIUM COPPER (BeCu) OR COPPER-NICKEL-SILICON (CuNiSi).
- 4 CONTACT FINISH: .000030 GOLD OVER .000030 NICKEL IN CONTACT AREA .000150 MIN BRIGHT TIN-LEAD (93/7) ON POSTS.
- 5 LETTERS INDICATING OUTSIDE ROWS AND NUMBERS INDICATING END CAVITIES MARKED THIS AREA.
- 6 LINES INDICATING EVERY FIVE CAVITIES MARKED ON MATING FACE.
- 7. ONLY ROWS A AND C ARE LOADED WITH CONTACTS.



| | | | | | | | | |
|-------|----|-------|-------|-------|-------|-----|--------------|----------|
| 3.900 | 39 | 4.024 | 4.125 | 4.450 | 4.750 | 120 | (774444-6) | 445458-2 |
| 5.900 | 59 | 6.024 | 6.125 | 6.450 | 6.750 | 180 | (774444-5) | 445458-1 |
| F | E | D | C | B | A | POS | CUSTOMER P/N | PART NO |

THIS DRAWING IS A CONTROLLED DOCUMENT.

| | | | |
|--------------------|--|-----------------------|--|
| DIMENSIONS: INCHES | TOLERANCES UNLESS OTHERWISE SPECIFIED: | DWN T. SHUEY 8-5-88 | Tyco Electronics Corporation Harrisburg, PA 17105-3608 |
| | 0 PLC ± - | CHK D. MILLER 9-13-88 | |
| | 1 PLC ± - | APVD T. SHUEY 8-15-88 | |
| | 2 PLC ± - | PRODUCT SPEC | |
| MATERIAL | FINISH | APPLICATION SPEC | NAME |
| | | WEIGHT | RECEPTACLE ASSEMBLY, 3-ROW BOX 100 C/L, W/MOUNTING EARS AND 2-HIGH WIRE WRAP POSTS |
| | | | SIZE CAGE CODE DRAWING NO RESTRICTED TO |
| | | | A2 00779 C=445458 |
| | | CUSTOMER DRAWING | SCALE 4:1 SHEET 1 of 1 REV C |

单击下面可查看定价，库存，交付和生命周期等信息

[>>TE Connectivity\(泰科\)](#)