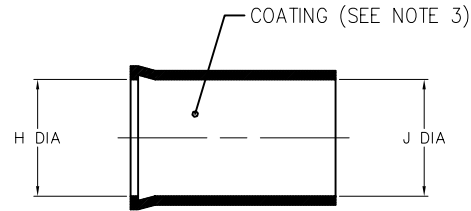


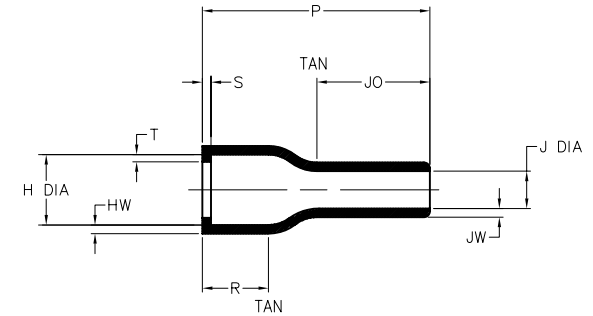
NOTES

1. ALL DIMENSIONS ARE IN $\frac{\text{INCHES}}{[\text{MILLIMETERS}]}$
2. DIMENSIONS APPEARING IN TABLE ARE AS FOLLOWS:
 - a - AS SUPPLIED
 - b - AFTER UNRESTRICTED RECOVERY
3. COATING (ADHESIVE): AS SUPPLIED DIMENSIONS APPEARING IN TABLE ARE FOR UNCOATED PARTS. WHEN COATING IS ADDED, ENTRY DIAMETER WILL BE REDUCED BY .06 MAX.
4. SEE COMPATIBILITY CHART FOR MORE INFO.

REVISIONS		
LTR	DESCRIPTION	DATE
A	ECD-08-007623	03/26/2008



AS SUPPLIED



AFTER UNRESTRICTED RECOVERY

TABLE OF DIMENSIONS

PART NUMBER	H		J		P	JO	R	S	T	HW	JW
	MIN	MAX	MIN	MAX	±10%	±10%	REF	REF	REF	±20%	±20%
	a	b	a	b	b	b	b	b	b	b	b
202D232-25-08/225	$\frac{1.16}{[29,5]}$	$\frac{.74}{[18,8]}$	$\frac{1.16}{[29,5]}$	$\frac{.33}{[8,4]}$	$\frac{1.65}{[41,9]}$	$\frac{.63}{[16,0]}$	$\frac{.48}{[12,2]}$	$\frac{.12}{[3,0]}$	$\frac{.04}{[1,0]}$	$\frac{.07}{[1,78]}$	$\frac{.045}{[1,14]}$

If this document is printed it becomes uncontrolled. Check for the latest revision

CUSTOMER DRAWING

COMPATIBILITY CHART

MATERIAL DASH NO.	MATERIAL DESCRIPTION	RT SPEC	COATING NO.	COATING SPEC
-25	ELASTOMER, FLUID RESISTANT	RT-1325	/225	S-1206

UNLESS OTHERWISE SPECIFIED DIMENSIONS ARE INCHES. METRIC DIMENSIONS ARE IN BRACKETS.

DECIMAL TOLERANCES
 .XXX ± 0.005 [0.13 mm]
 .XX ± 0.01 [0.25 mm]
 .X ± 0.1 [0.50 mm]

ANGLE TOLERANCE
 .X ± 1 DEG.

DRAWN: UNGUYEN
 DATE: 03/26/2008
 RPN

THIRD ANGLE PROJECTION

© 2008 Tyco Electronics Corporation. All rights reserved.

Tyco Electronics
 Raychem Molded Parts
 305 Constitution Dr
 Menlo Park, CA 94025

TITLE: **BOOT, STRAIGHT, WITH LIP**

SIZE: B
 CODE IDENT. NO.: 06090
 DWG. NO.: 202D232-25-08/225

DO NOT SCALE THIS DRAWING
 SHEET 1 OF 1

单击下面可查看定价，库存，交付和生命周期等信息

[>>TE Connectivity\(泰科\)](#)