

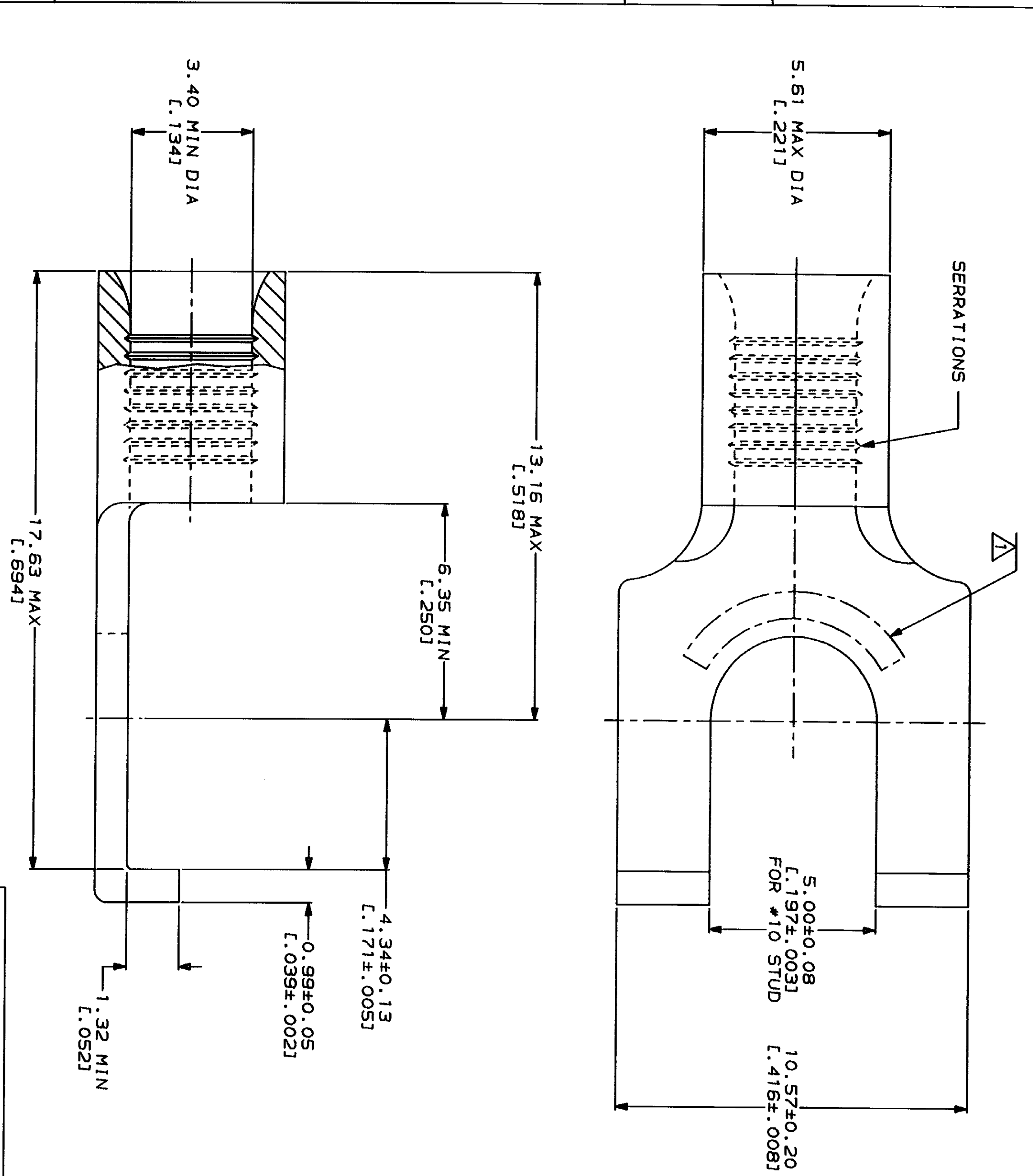
LOC	DIST	ZONE	LTR	DESCRIPTION	DATE	APPD
G	14			REVISED PER 0720-0230-93	2/28/94	DAW

REVISIONS		DATE	APPD
1			

METRIC
 DIMENSIONS LISTED IN MM [INCHES]

AMP WIRE RANGE 12-10 AWG STRANDED	UL E13288 Listed
AMP WIRE RANGE 12-10 AWG STRANDED	MILITARY P/N AND CLASS NOT APPLICABLE

△ STAMP AMP 12-10* APPROX AS SHOWN



AMP INCORPORATED
 CUSTOMER SERVICE SYSTEMS

FOR ADDITIONAL
 PRODUCT INFORMATION OR
 COPIES OF DRAWINGS
 AND TECHNICAL DOCUMENTS
 FOR APPLICATION
 TOOLING INFORMATION
 FOR ORDER ENTRY
 PRODUCT INFORMATION CENTER
 1-800-522-6752
 TOOLING ASSISTANCE CENTER
 1-800-722-1111
 1-800-526-5142

MAX RECOMMENDED OPERATING
 TEMPERATURE:
 170°C MAX

VOLTAGE RATING:
 NOT APPLICABLE

WIRE CROSS SECTIONAL AREA RANGE:
 2.62-6.64mm² (S.180-13,100) CIR MILS
 STRANDED

DO NOT SCALE PRINT.
 UNLESS SPECIFIED
 DIMENSIONS IN MILLIMETERS
 TOLERANCES ON:
 2 PLC DEC # -
 3 PLC DEC # -
 ANGLES # -
 MATERIAL
 COPPER PER
 ASTM B-152
 ANNEALED

FINISH
 TIN PLATE
 0.0025±L.0001(00) MIN
 THK PER MIL-T-10727

DR 3-4-93
 TA BRINKMAN
 CHK 3-4-93
 DA PATTERSON
 APPD 3-4-93
 DE HILLER
 APPD 3-4-93
 JL MECKLEY
 PRODUCT SPEC

APPLICATION SPEC
 WEIGHT -

AMP
 AMP Incorporated
 Harrisburg, PA 17105-3508

TERMINAL, FLANGED
 SPADE, BUDGET
 CAGE CODE 00779
 DRAWING NO G-322725
 SCALE 10:1
 SHEET 1 OF 1

单击下面可查看定价，库存，交付和生命周期等信息

[>>TE Connectivity\(泰科\)](#)