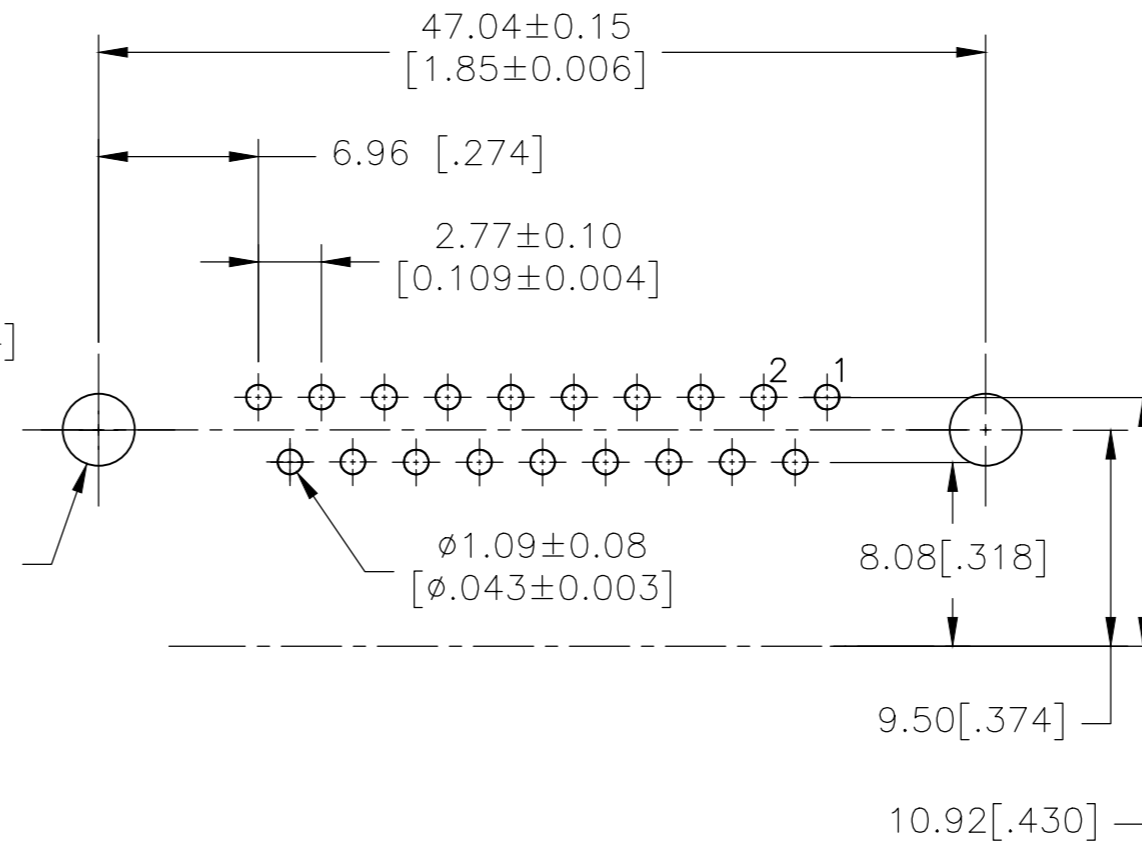
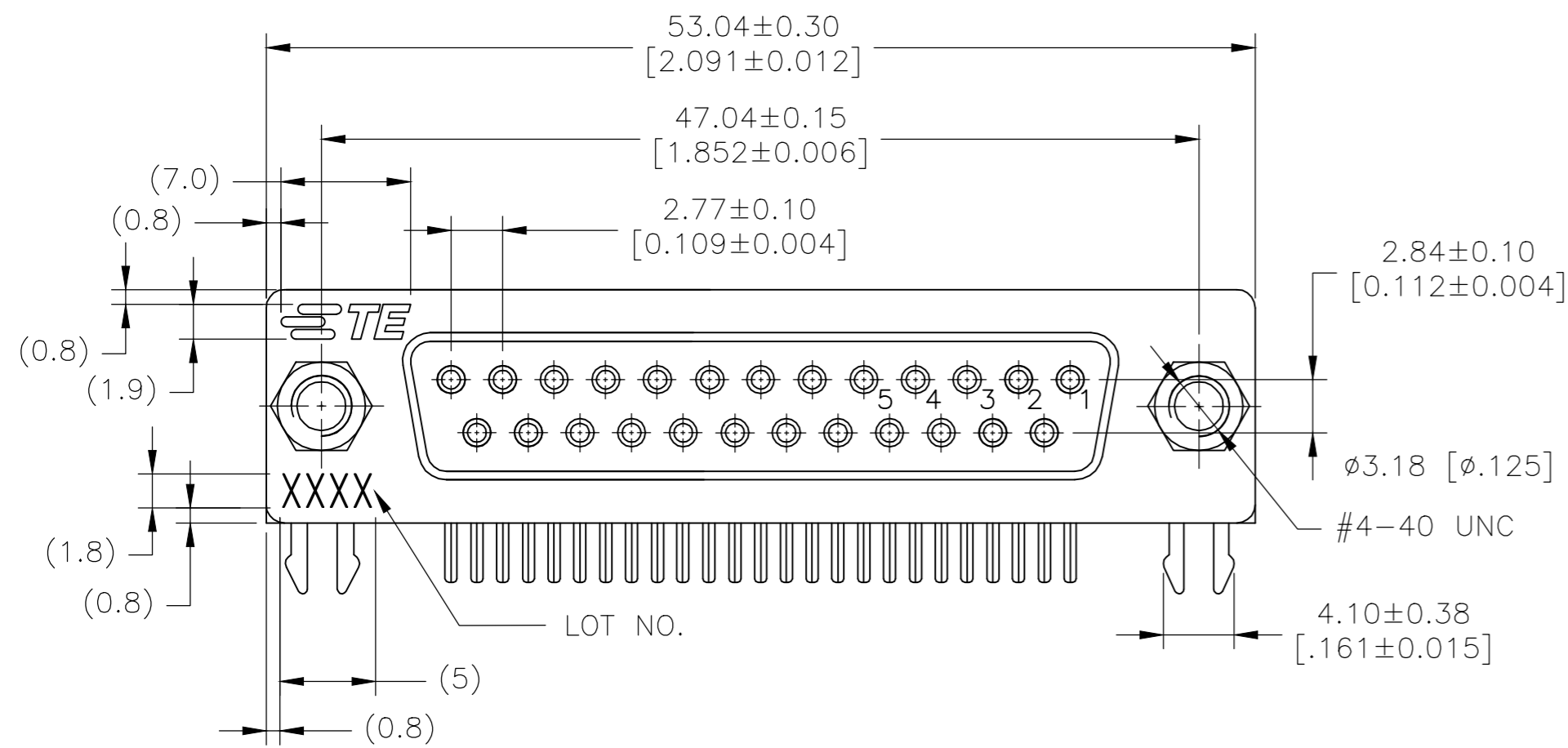


THIS DRAWING IS UNPUBLISHED. RELEASED FOR PUBLICATION
 © COPYRIGHT - By - ALL RIGHTS RESERVED.

REVISIONS					
P	LTR	DESCRIPTION	DATE	DWN	APVD
D		REVISED PER ECO-18-008015	24MAY2018	AP	DG

RECOMMENDED PCB LAYOUT
 TOLERANCE IS ±0.05

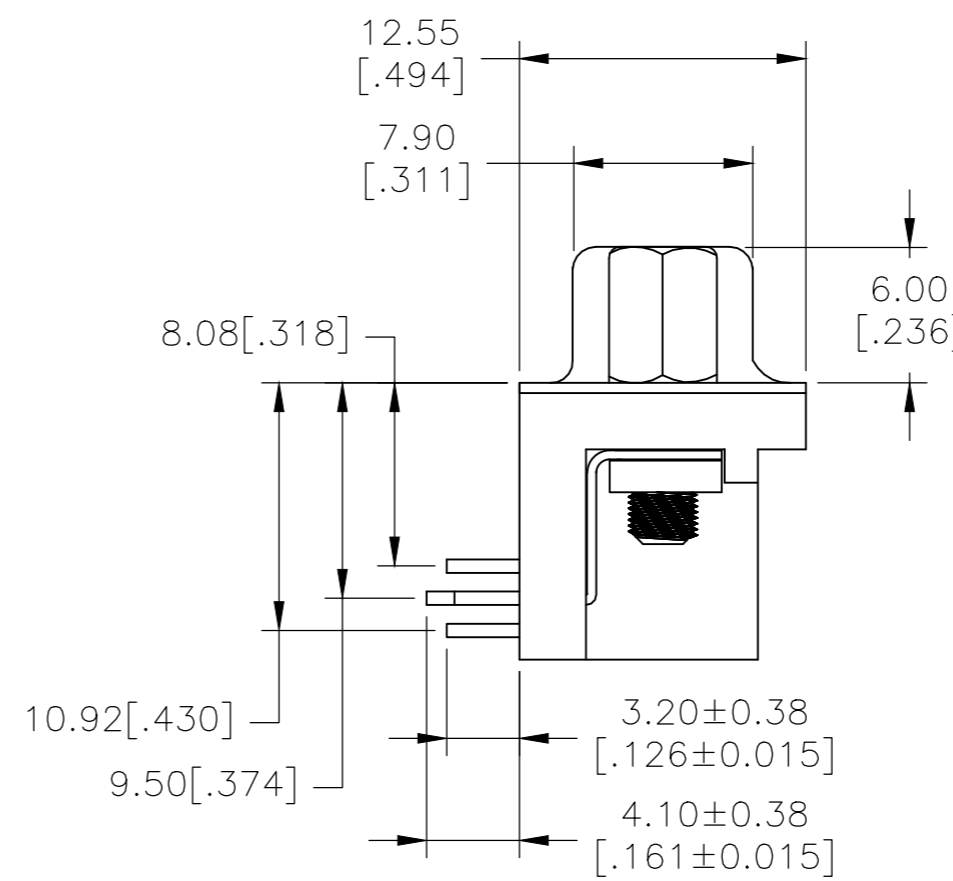
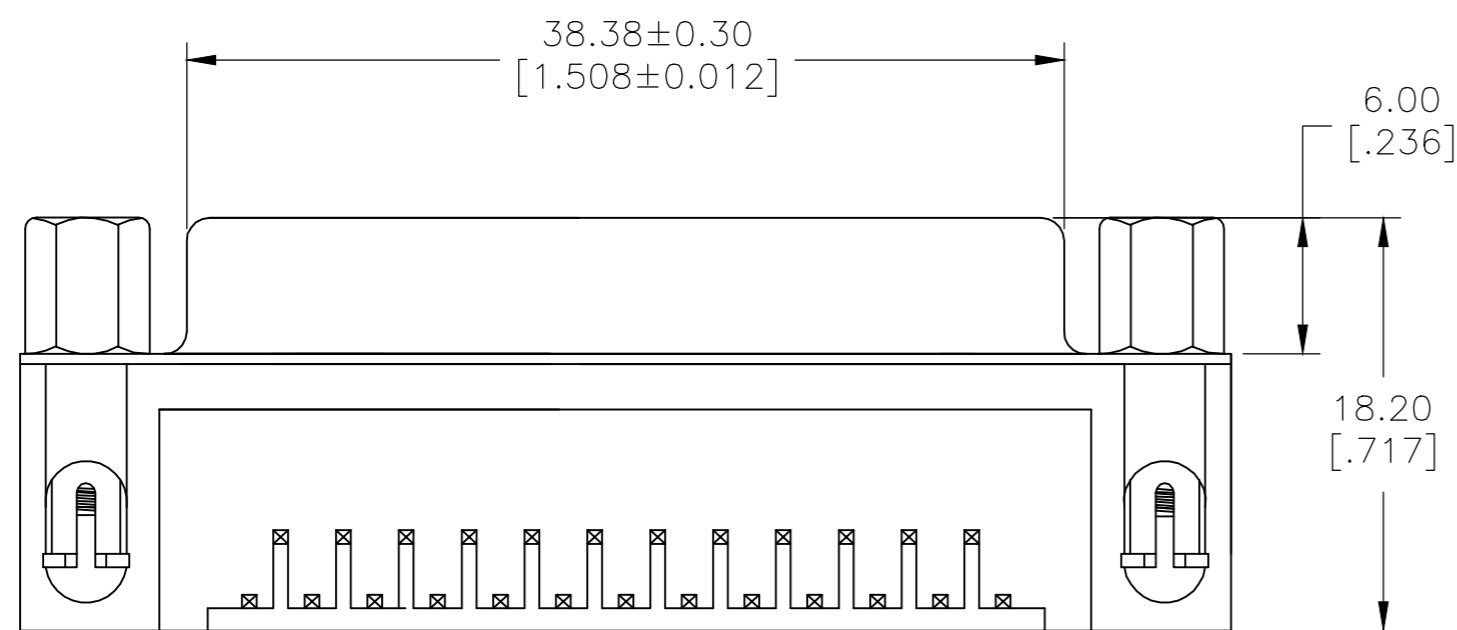


NOTES:

- HOUSING:PBT+GF(UL94V-0) BLACK
- CONTACT:PHOSPHOR BRONZE
- " GOLD PLATING ON CONTACT AREA
- 100u" MATTE TIN PLATING ON SOLDER TAIL
- 50u" NICKEL UNDERPLATED OVERALL
- HOLDDOWN:BRASS,100u" TIN OVER 50u" NICKEL
- SHELL:SPCC,NICKEL PLATED
- RIVET:BRASS,NICKEL PLATED
- SCREWLOCK:BRASS,NICKEL PLATED

LOT NUMBER "XXXX"

STANDS FOR CALENDAR YEAR
 STANDS FOR WEEK NUMBER



YES	Au Flash	2311766-1
SCREWLOCKS	Contact Area	P/N
	Plating	

THIS DRAWING IS A CONTROLLED DOCUMENT.		DWN AJITH PAI 03MAR2017		
DIMENSIONS: mm [INCHES]		CHK GORENC, DANIEL L. 03MAR2017		
TOLERANCES UNLESS OTHERWISE SPECIFIED:		APVD GORENC, DANIEL L. 03MAR2017	NAME AMPLIMITE RECEPTACLE, HD20, RIGHT ANGLE, 25P SCREWLOCKS .318	
0 PLC ± -		PRODUCT SPEC 108-130023	SIZE A2	
1 PLC ± 0.40		APPLICATION SPEC	CAGE CODE 00779	DRAWING NO C=2311766
2 PLC ± 0.25		MATERIAL	SCALE 1:1	SHEET 1 OF 1
3 PLC ± 0.15		FINISH	RESTRICTED TO	REV D
4 PLC ± -		WEIGHT	CUSTOMER DRAWING	
ANGLES ± 3°				

单击下面可查看定价，库存，交付和生命周期等信息

[>>TE Connectivity\(泰科\)](#)