

THIS DRAWING IS UNPUBLISHED.

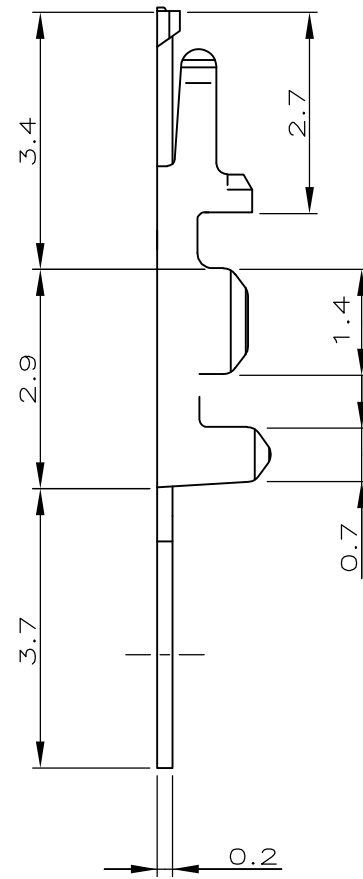
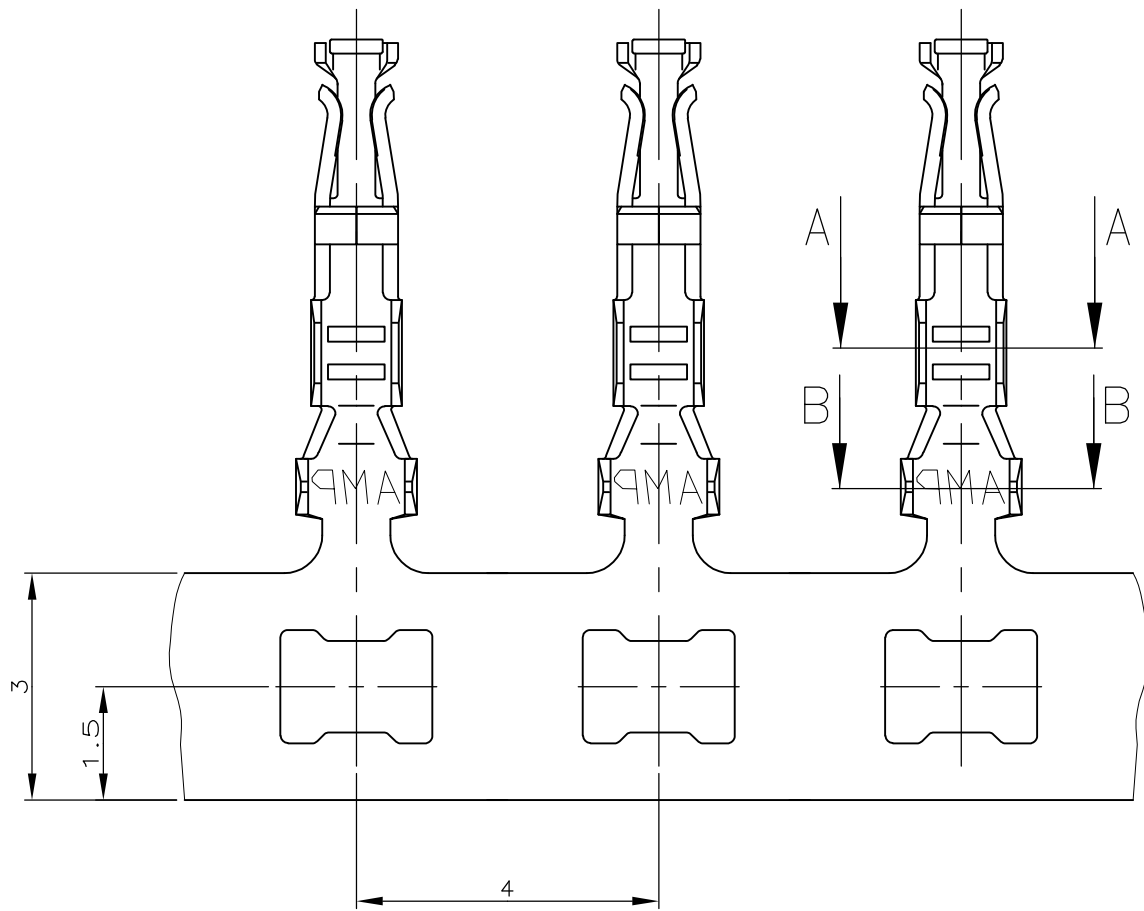
RELEASED FOR PUBLICATION

ALL RIGHTS RESERVED.

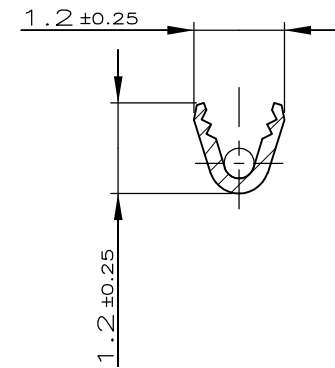
© COPYRIGHT - By -

REVISIONS

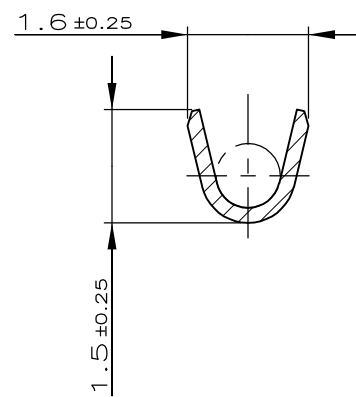
P	LTR	DESCRIPTION	DATE	DWN	APVD
	B1	GOLD PLATING THICKNESS CORRECTED AS 0.76µm	02AUG2016	RP	PS



SECTION "A"-"A"
AWG 32-28



SECTION "B"-"B"



NOTES:

- 1. PLUG AREA: 0.76µm Au over 1.27µm Ni
CRIMPING AREA: Sn plated
- 2. WIRE RANGE AWG 32-28
INSULATION RANGE ISO - Ø 0.5-1.0mm
- 3. SUITABLE FOR SOCKET HOUSING: PN 964976

OBSOLETE	-969129-4	CRIMP CONTACT FOR HANDTOOL	CuNiSi	1
	969129-3	CRIMP CONTACT FOR APPLICATORS	CuNiSi	1
	PART NUMBER	DESCRIPTION	MATERIAL	PLATING

THIS DRAWING IS A CONTROLLED DOCUMENT.		DWN M.STEIN 16-MAY-97	TE Connectivity														
		CHK F.REICHARDT 16-MAY-97															
DIMENSIONS: mm		NAME AMPMODU 2mm RASTER, CRIMPKONTAKT															
TOLERANCES UNLESS OTHERWISE SPECIFIED: DIN ISO 8015 DIN ISO 2768-mK		PRODUCT SPEC 108-18544															
<table border="0"> <tr><td>0 PLC</td><td>± -</td></tr> <tr><td>1 PLC</td><td>± -</td></tr> <tr><td>2 PLC</td><td>± -</td></tr> <tr><td>3 PLC</td><td>± -</td></tr> <tr><td>4 PLC</td><td>± -</td></tr> <tr><td>ANGLES</td><td>± -</td></tr> </table>		0 PLC	± -	1 PLC	± -	2 PLC	± -	3 PLC	± -	4 PLC	± -	ANGLES	± -	APPLICATION SPEC -			
0 PLC	± -																
1 PLC	± -																
2 PLC	± -																
3 PLC	± -																
4 PLC	± -																
ANGLES	± -																
MATERIAL SEE TABLE		WEIGHT A3 00779		DRAWING NO C-969129													
FINISH SEE NOTES		CUSTOMER DRAWING		RESTRICTED TO -													
SCALE 10:1			SHEET 1 OF 1		REV B1												

单击下面可查看定价，库存，交付和生命周期等信息

[>>TE Connectivity\(泰科\)](#)