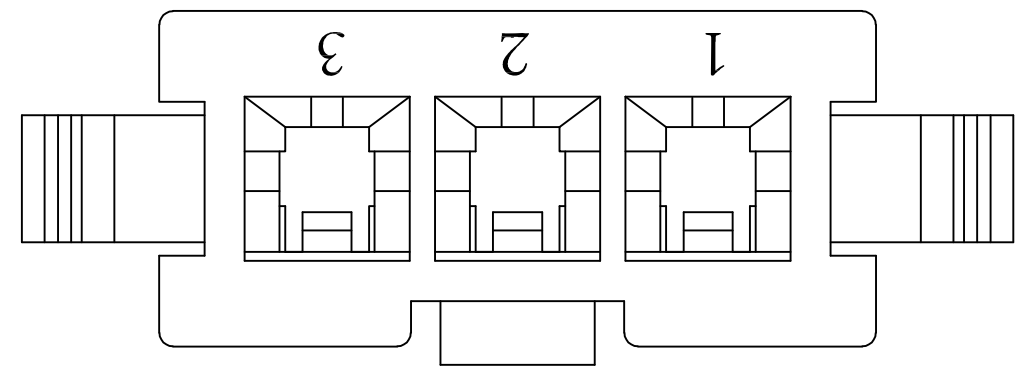
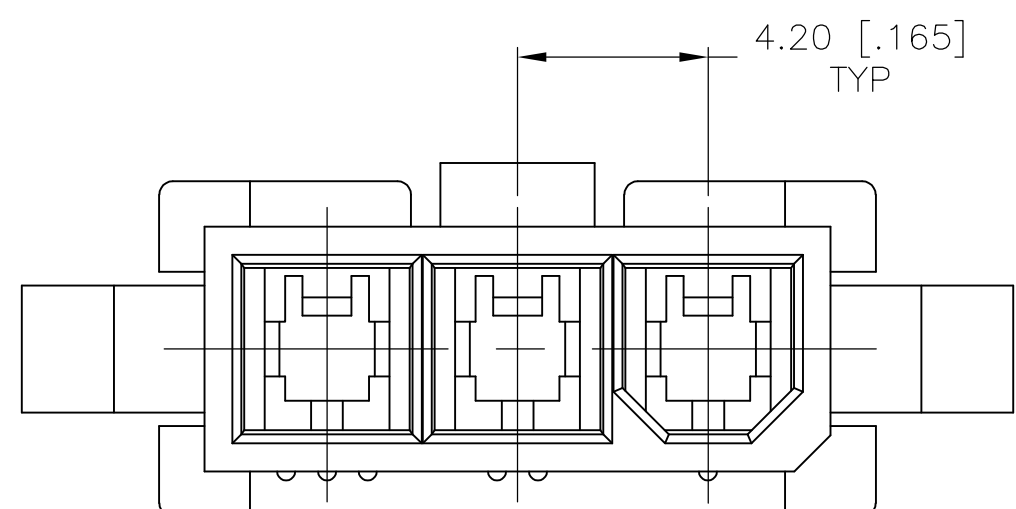
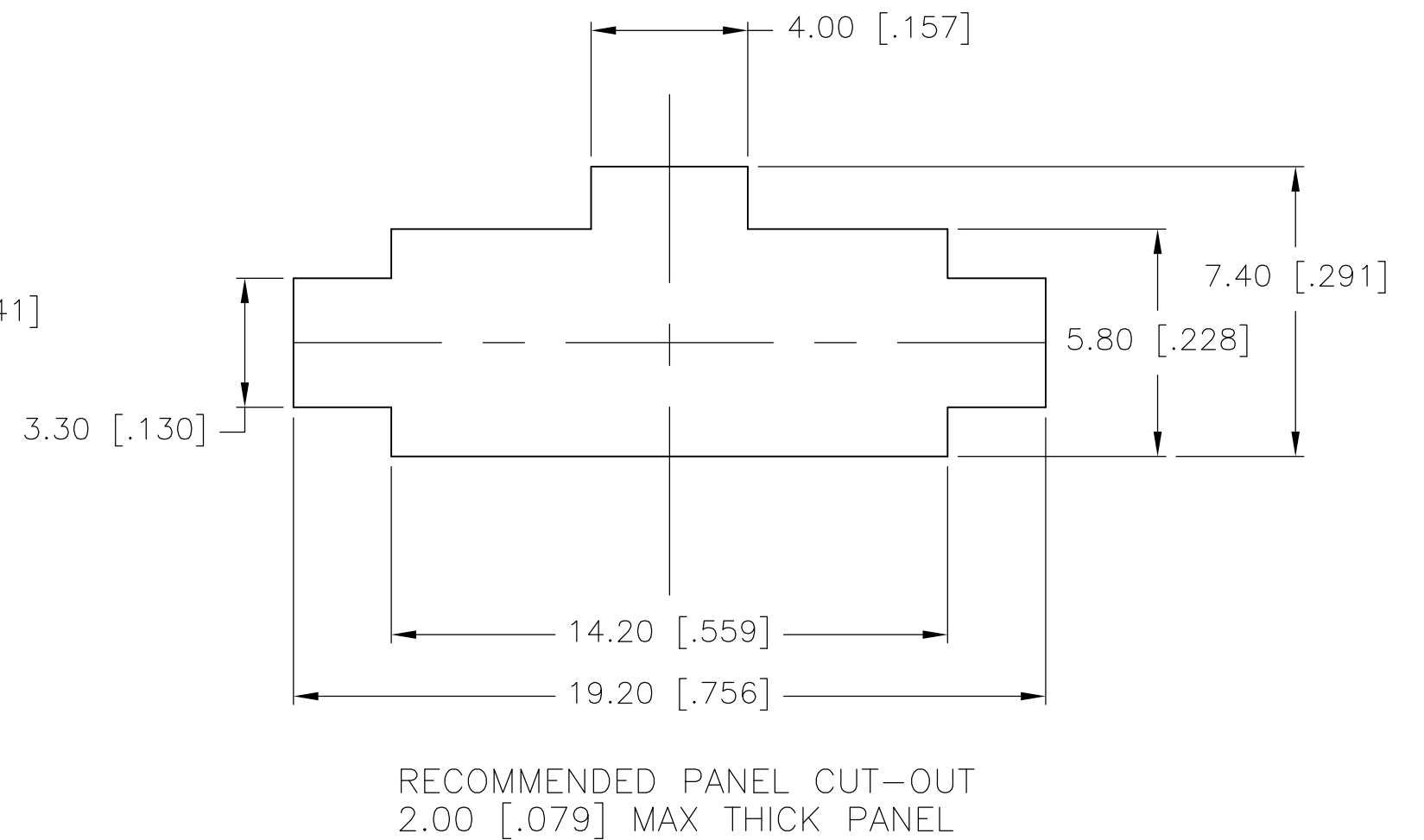
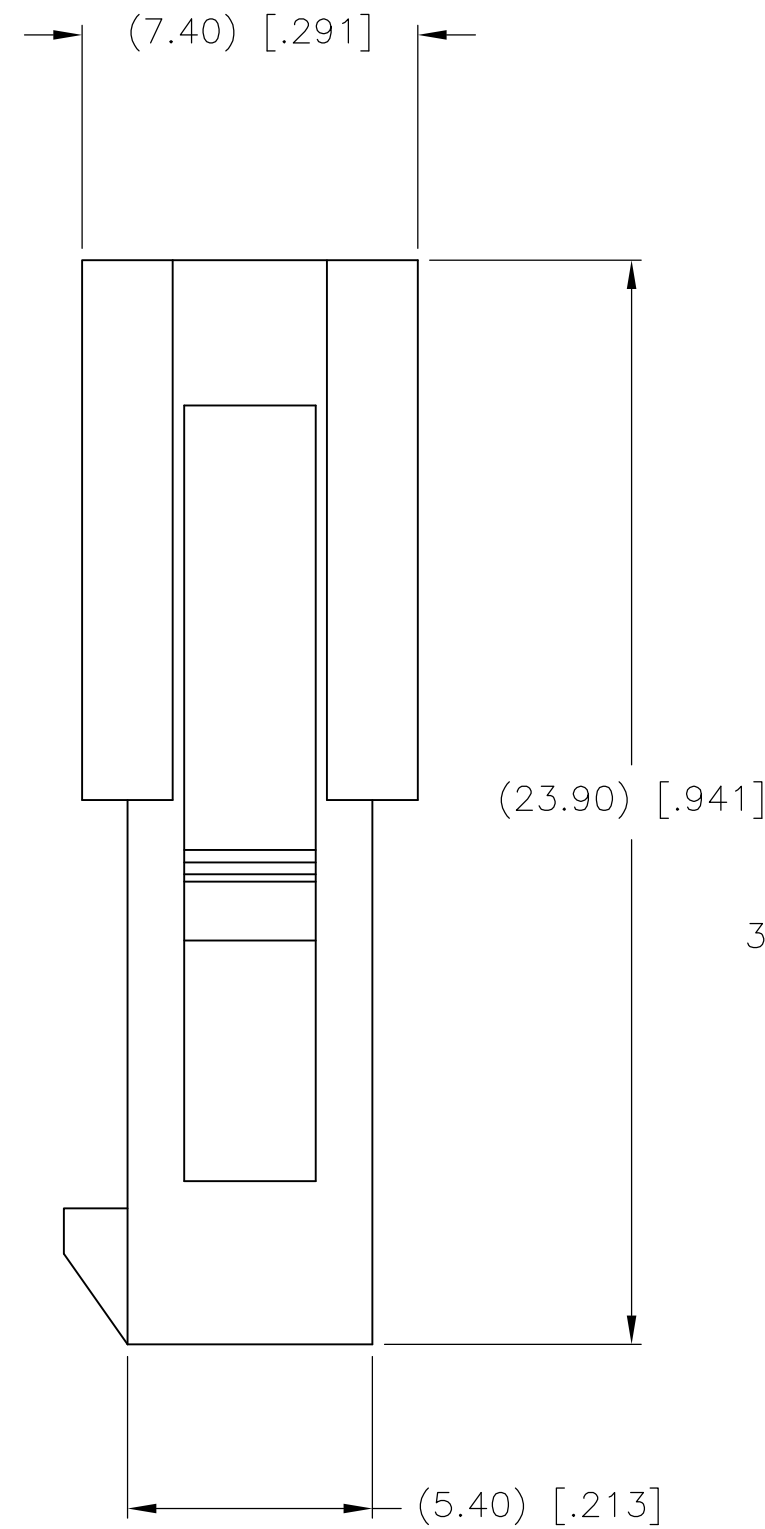
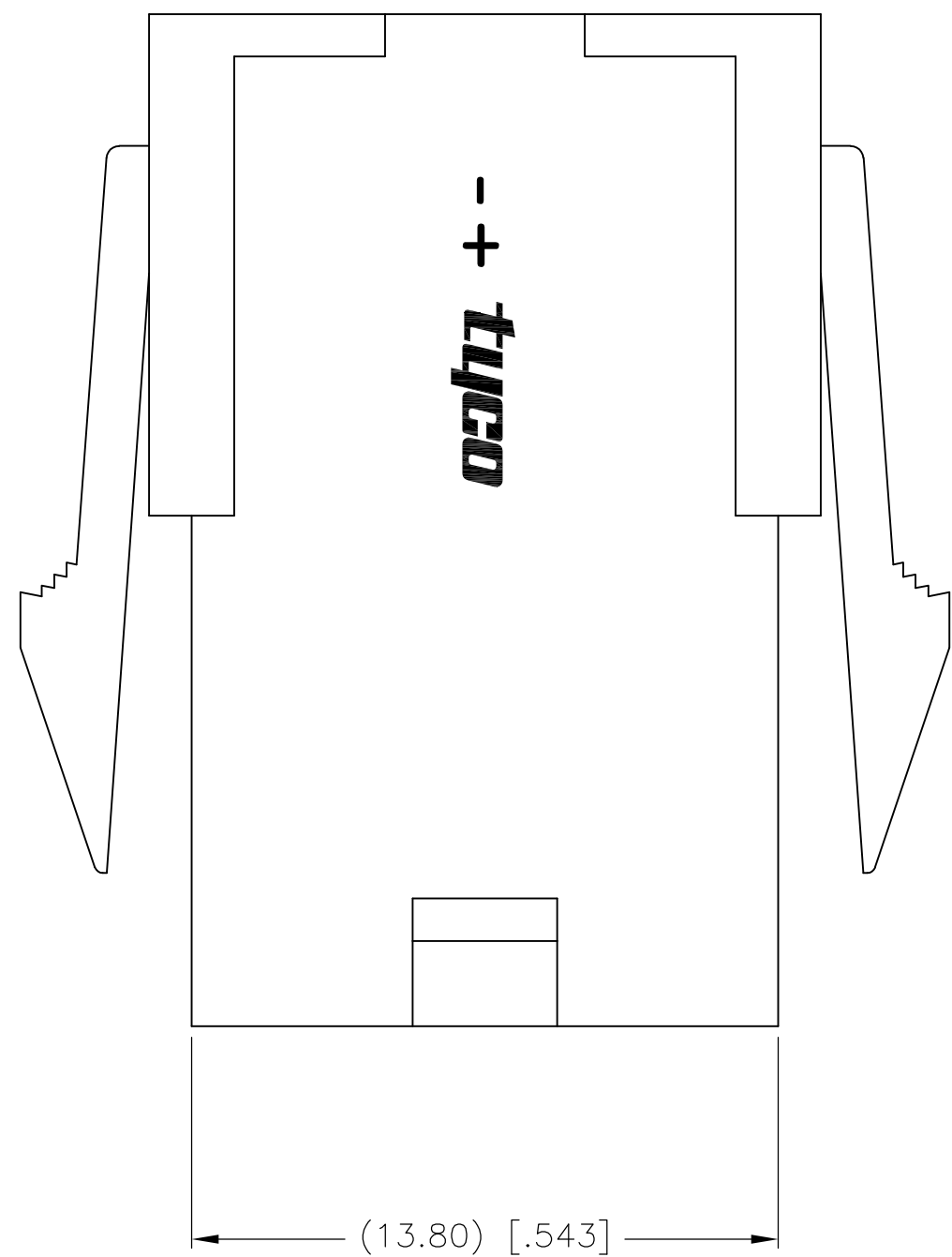


THIS DRAWING IS UNPUBLISHED. RELEASED FOR PUBLICATION
 © COPYRIGHT - By - ALL RIGHTS RESERVED.

| LOC | | DIST | | REVISIONS | | | |
|-----|-----|-------------|---------------------------|-----------|---------|------|----|
| P | LTR | DESCRIPTION | | DATE | DWN | APVD | |
| CM | 00 | A1 | REVISED PER ECO-11-011469 | | 03JUN11 | HMR | SM |



1. PANEL MUST BE PUNCHED SO THAT THE HOUSING ENTERS THE PANEL IN THE SAME DIRECTION AS THE PUNCH.
2. GLOW WIRE APPROVED, CONTACT TYCO ELECTRONICS ENGINEERING FOR SPECIFICATION.



METRIC

| | | | | |
|---|--|---------------------------------|-------------------------------|--------------------------|
| THIS DRAWING IS A CONTROLLED DOCUMENT. | | DWN K. WHITAKER 10APR2008 | 2029110-3 | |
| DIMENSIONS: mm [INCHES] | | CHK C. CASH 10APR2008 | PART NO. | |
| TOLERANCES UNLESS OTHERWISE SPECIFIED: 0 PLC ± 1 PLC ± 2 PLC ± 0.13 [.005] 3 PLC ± 4 PLC ± ANGLES ± 0°30' | | APVD C. CASH 10APR2008 | TE Connectivity | |
| MATERIAL NYLON 66 UL94V-2 | | PRODUCT SPEC | PLUG, 3 POS, VAL-U-LOK(TM) | |
| FINISH | | APPLICATION SPEC | SIZE A2 | RESTRICTED TO |
| | | WEIGHT | CAGE CODE 00779 | DRAWING NO. C=2029110 |
| | | CUSTOMER DRAWING | SCALE 6:1 | SHEET 1 of 1 |
| | | | REV A1 | |

单击下面可查看定价，库存，交付和生命周期等信息

[>>TE Connectivity\(泰科\)](#)