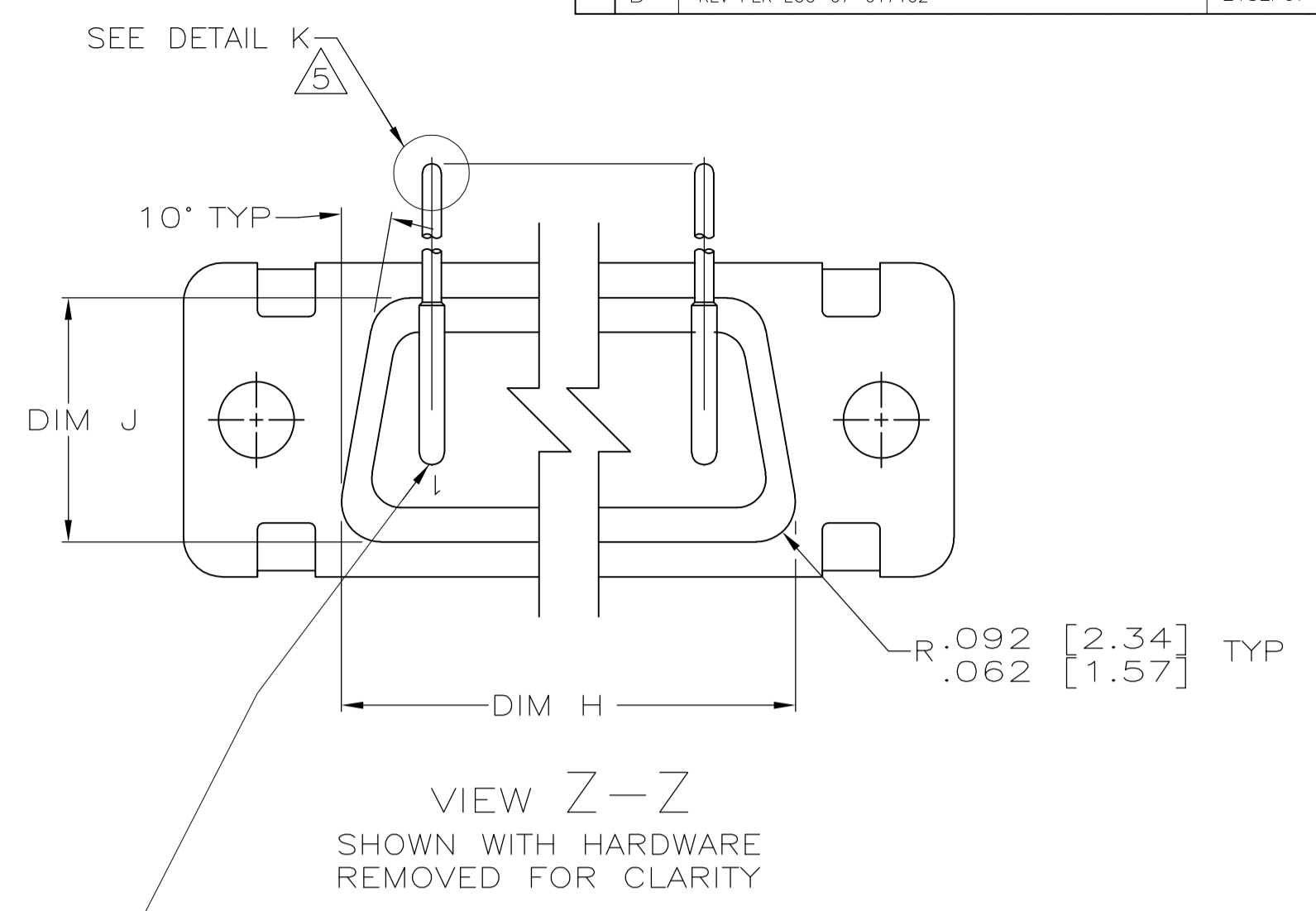
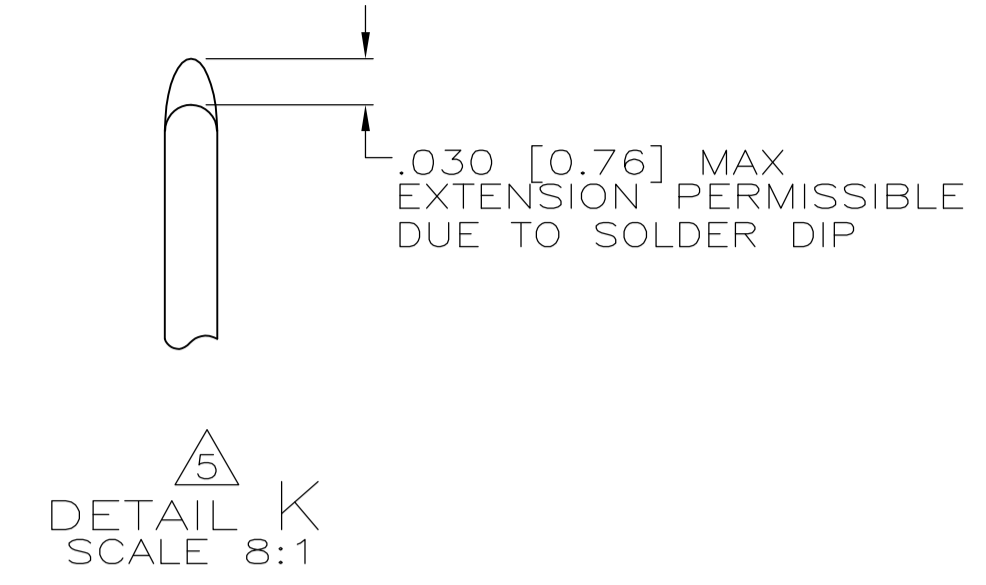
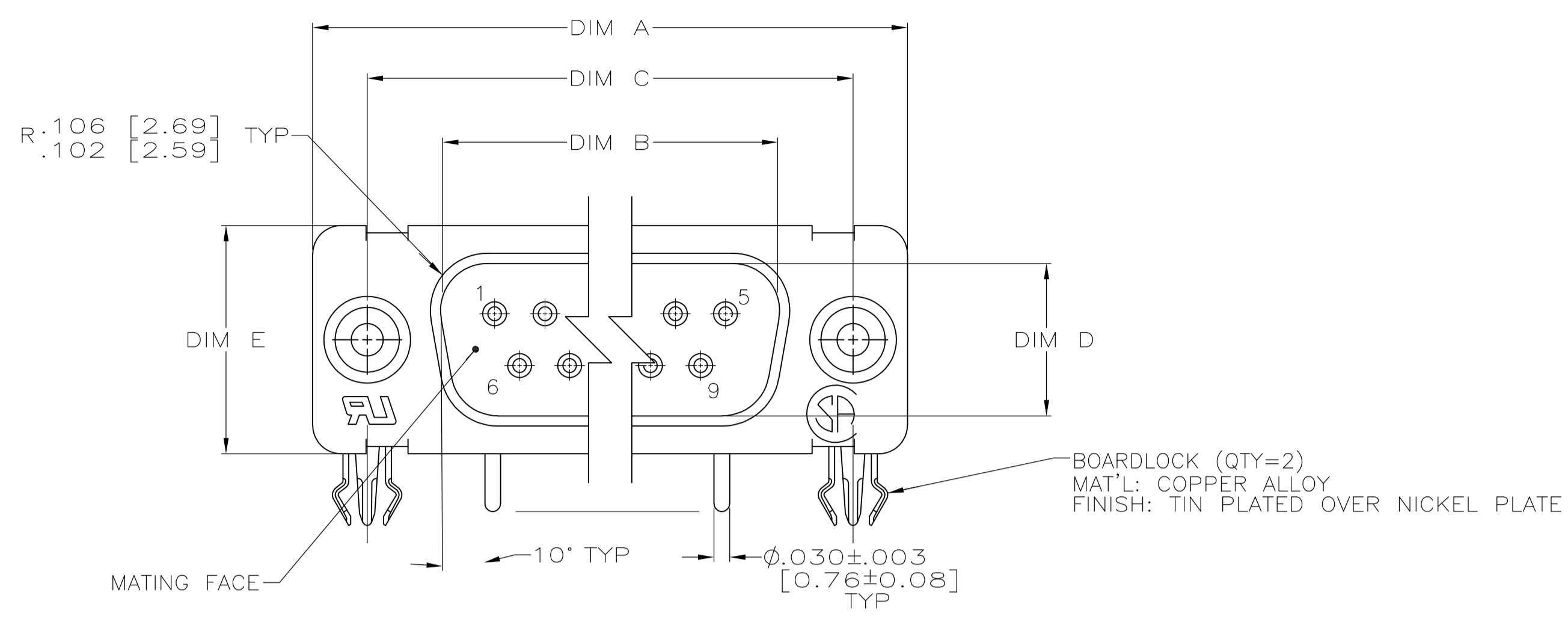
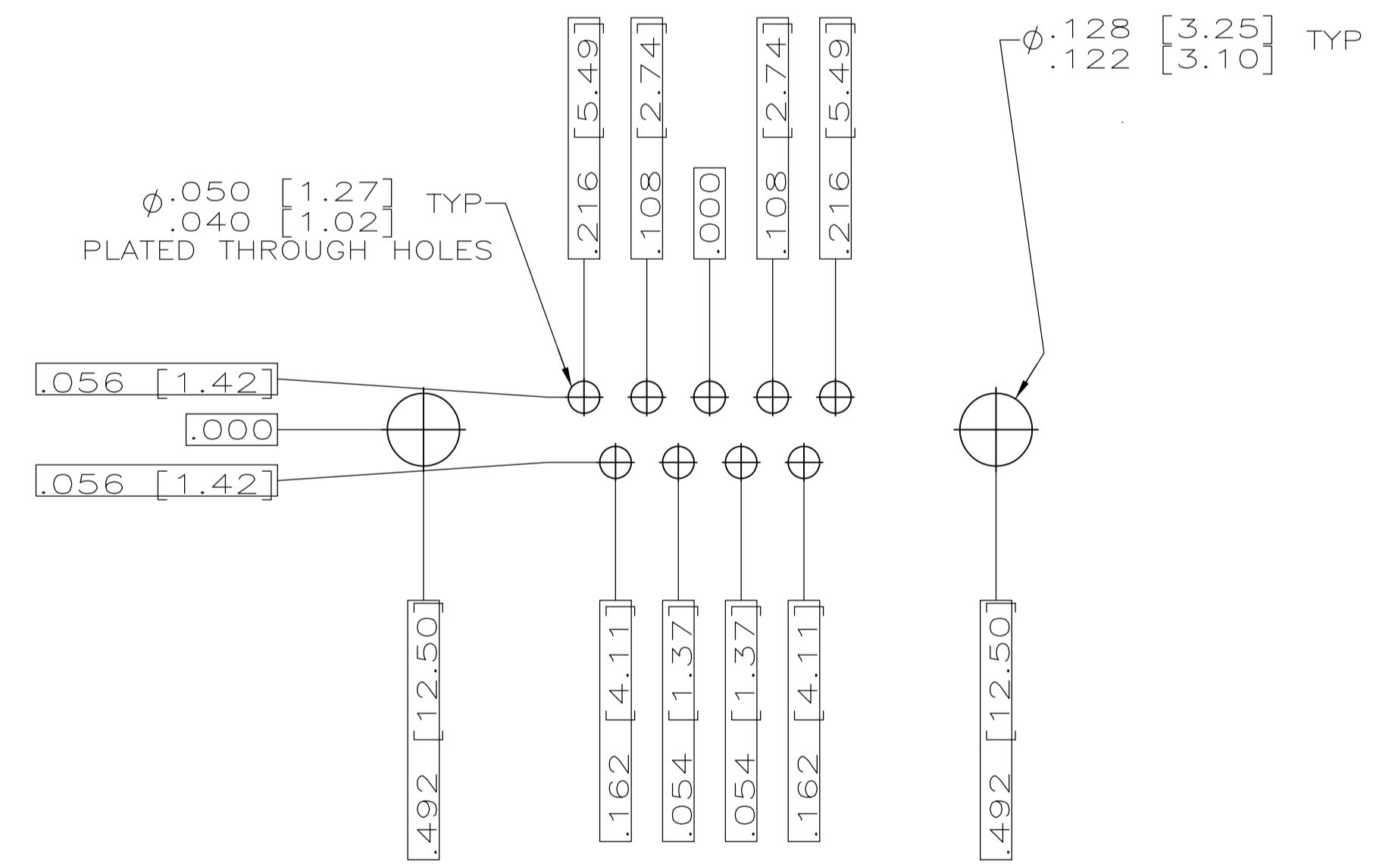
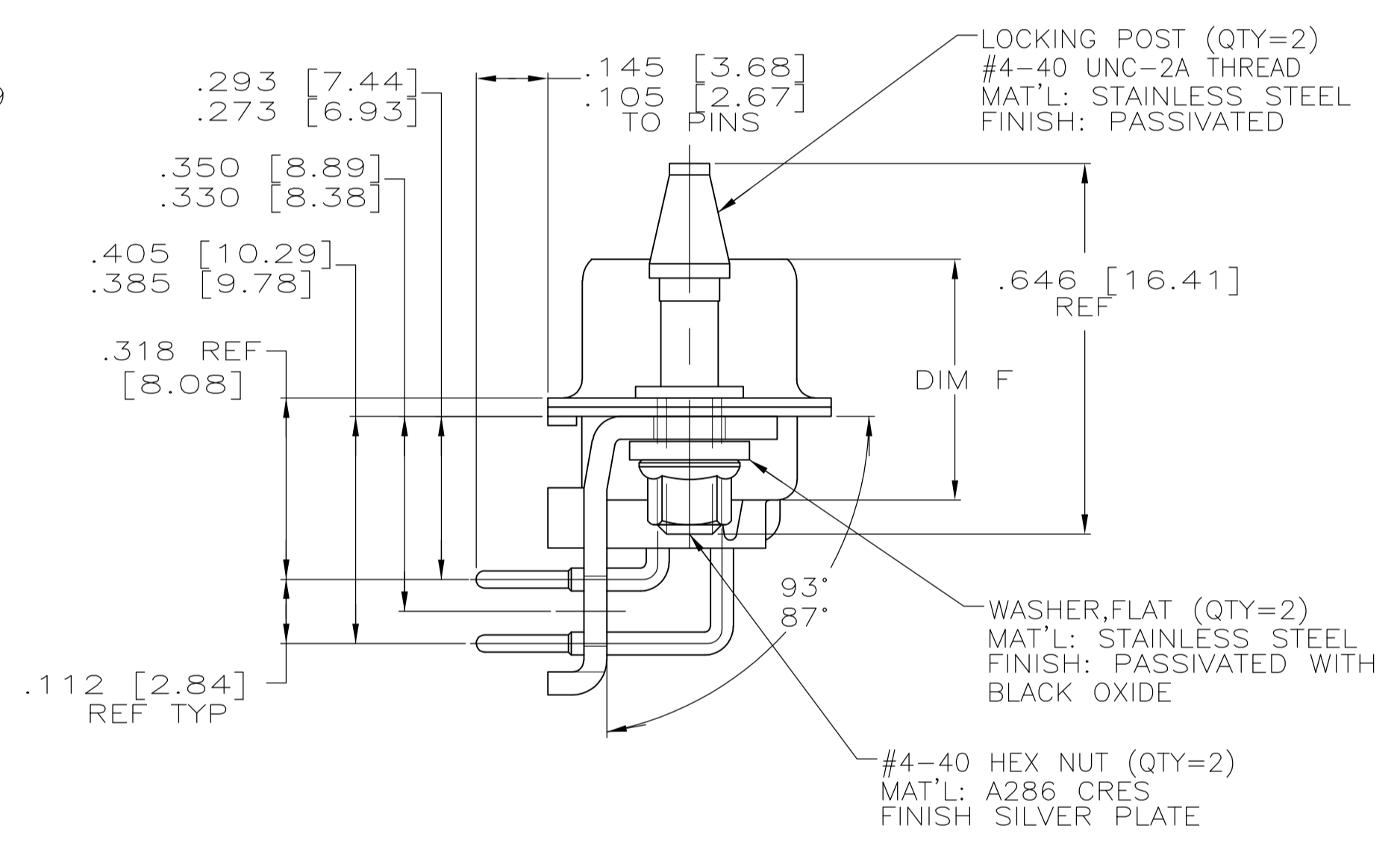
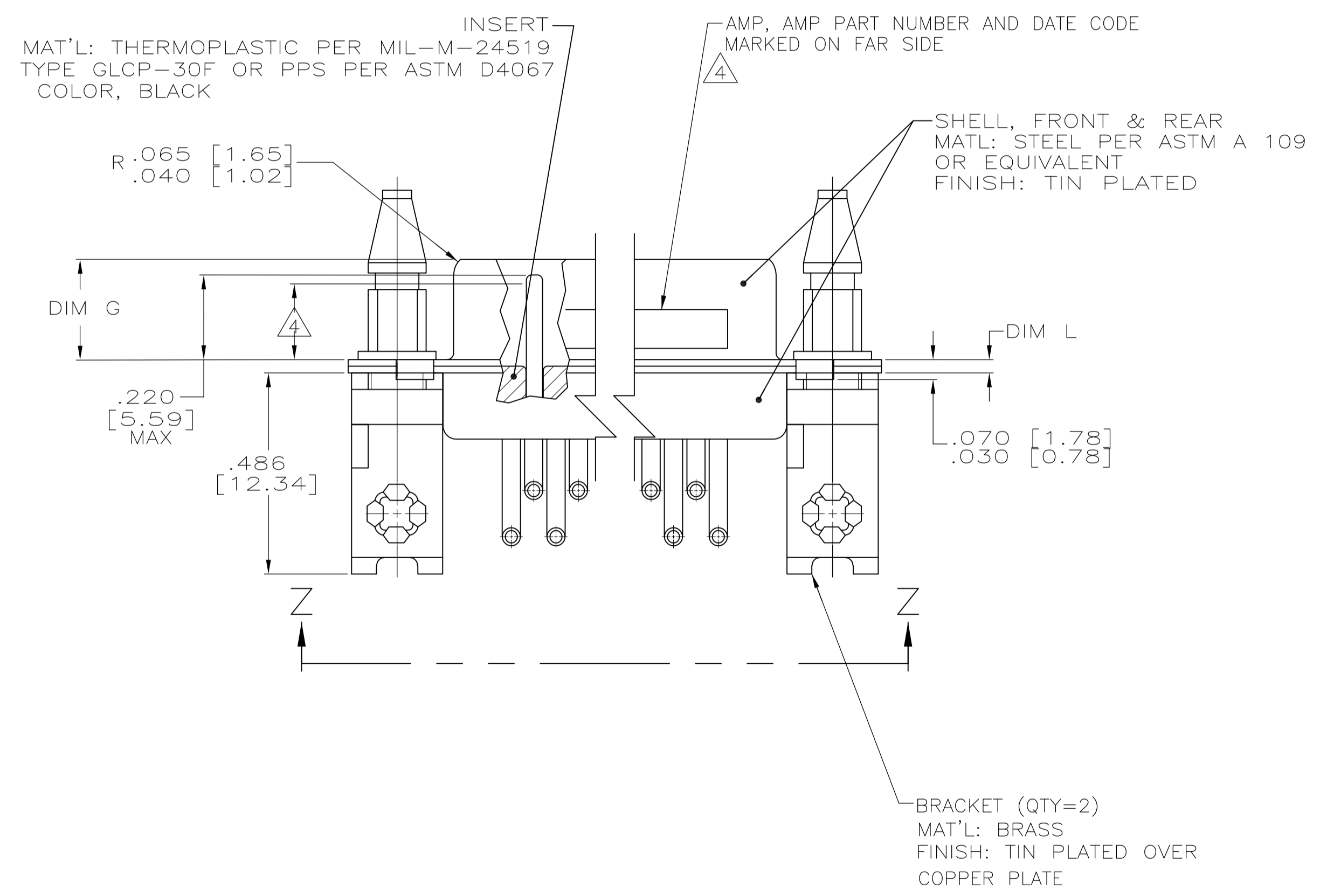


LOC		DIST		REVISIONS			
F	LTR	DESCRIPTION	DATE	DN	APVD		
D		REV PER ECO-07-017102	21SEP07	PY	BW		



CONTACT (QTY = NO. OF POSN)
 MATL: BRASS PER ASTM-B-16, OR BERYLLIUM
 COPPER PER ASTM-B-194
 FINISH: GOLD PER MIL-G-45204, TYPE II,
 GRADE C, CLASS I IN CONTACT MATING AREA,
 .000010 [0.0003] MIN THK GOLD PER MIL-G-45204
 OVER .000050 [0.0013] MIN THK NICKEL
 PER QQ-N-290 ON CONTACT BODY



- 1. TRUE POSITION TOLERANCE FOR P.C. BOARD LAYOUT IS .010 [0.25] AT MAX MATERIAL CONDITION. SUGGESTED BOARD THICKNESS IS .077±.005 [1.96±0.13]
- 2. THE CONNECTOR DESCRIBED IN THIS DOCUMENT WILL MATE WITH ANY RECEPTACLE CONNECTOR WITH THE SAME INSERT ARRANGEMENT.
- 3. MARKED WITH .047 [1.19]-.062 [1.57] HIGH CHARACTERS. FAR SIDE REFERS TO THE WIDE SIDE OF THE KEYSTONE. NEAR SIDE REFERS TO THE NARROW SIDE OF THE KEYSTONE. IF THE FRONT SHELL IS TOO SMALL FOR "AMP", AMP PART NUMBER AND DATE CODE, THEN SPLIT SHALL BE AS FOLLOWS:
 - A. AMP PART NUMBER ON REAR SHELL, FAR SIDE.
 - B. "AMP" AND DATE CODE ON FRONT SHELL, FAR SIDE.
- 4. REQUIREMENT FOR FULL PIN DIAMETER EXTENSION: .159 [4.04] MIN FOR SHELL SIZE 1
- 5. SIGNAL CONTACTS ARE SOLDER DIPPED WITH SnPb 63/37 TO MEET THE REQUIREMENTS OF MIL-STD-202, METHOD 208.

.040 [1.02]	.020 [0.51]	.432 [10.97]	.412 [10.46]	.769 [19.53]	.749 [19.02]	.238 [6.05]	.229 [5.82]	.432 [10.97]	.412 [10.46]	.509 [12.93]	.479 [12.17]	.334 [8.48]	.324 [8.23]	.989 [25.12]	.979 [24.87]	.671 [16.46]	.661 [16.21]	1.228 [31.19]	1.198 [30.43]	MS18273-1	9	1	1218606-6
DIM L	DIM J	DIM H	DIM G	DIM F	DIM E	DIM D	DIM C	DIM B	DIM A	INSERT ARRANGEMENT	NO OF POS	SHELL SIZE	AMP PART NO.										

THIS DRAWING IS A CONTROLLED DOCUMENT.		DIN C.C. THOMAS 1-6-00		Tyco Electronics Corporation Harrisburg, PA 17105-3608	
DIMENSIONS: INCHES	TOLERANCES UNLESS OTHERWISE SPECIFIED:	APVD	NAME	SIZE	CAGE CODE
0. PLC ± -	1. PLC ± -		PLUG ASSY, AMPLIMITE RIGHT ANGLE, SERIES 109 WITH ONE PIECE INSERT	A1	00779
2. PLC ± -	3. PLC ± .005 [0.13]	PRODUCT SPEC		SCALE	SHEET
4. PLC ± -	ANGLES ± 1°	APPLICATION SPEC		4:1	1 OF 1
MATERIAL SEE CALLOUTS	FINISH SEE CALLOUTS	WEIGHT	RESTRICTED TO	CUSTOMER DRAWING	
				SCALE	SHEET
				4:1	1 OF 1

单击下面可查看定价，库存，交付和生命周期等信息

[>>TE Connectivity\(泰科\)](#)