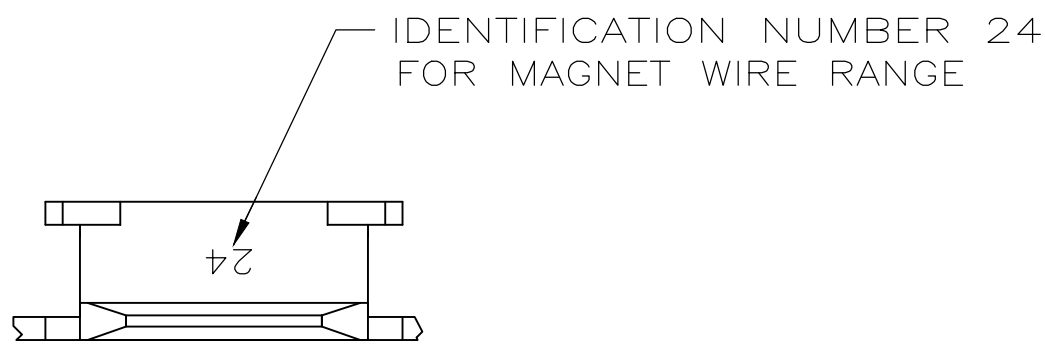
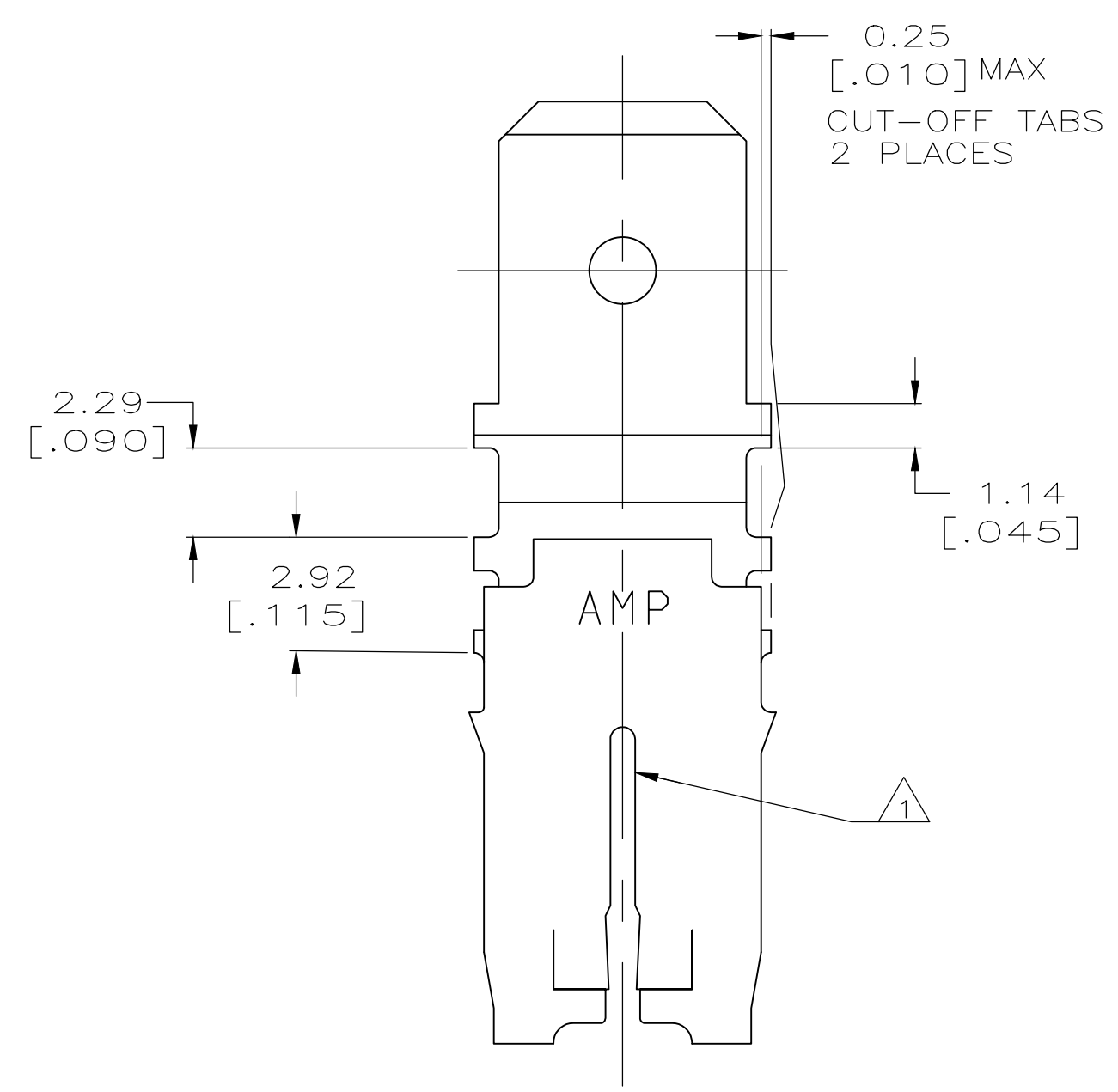
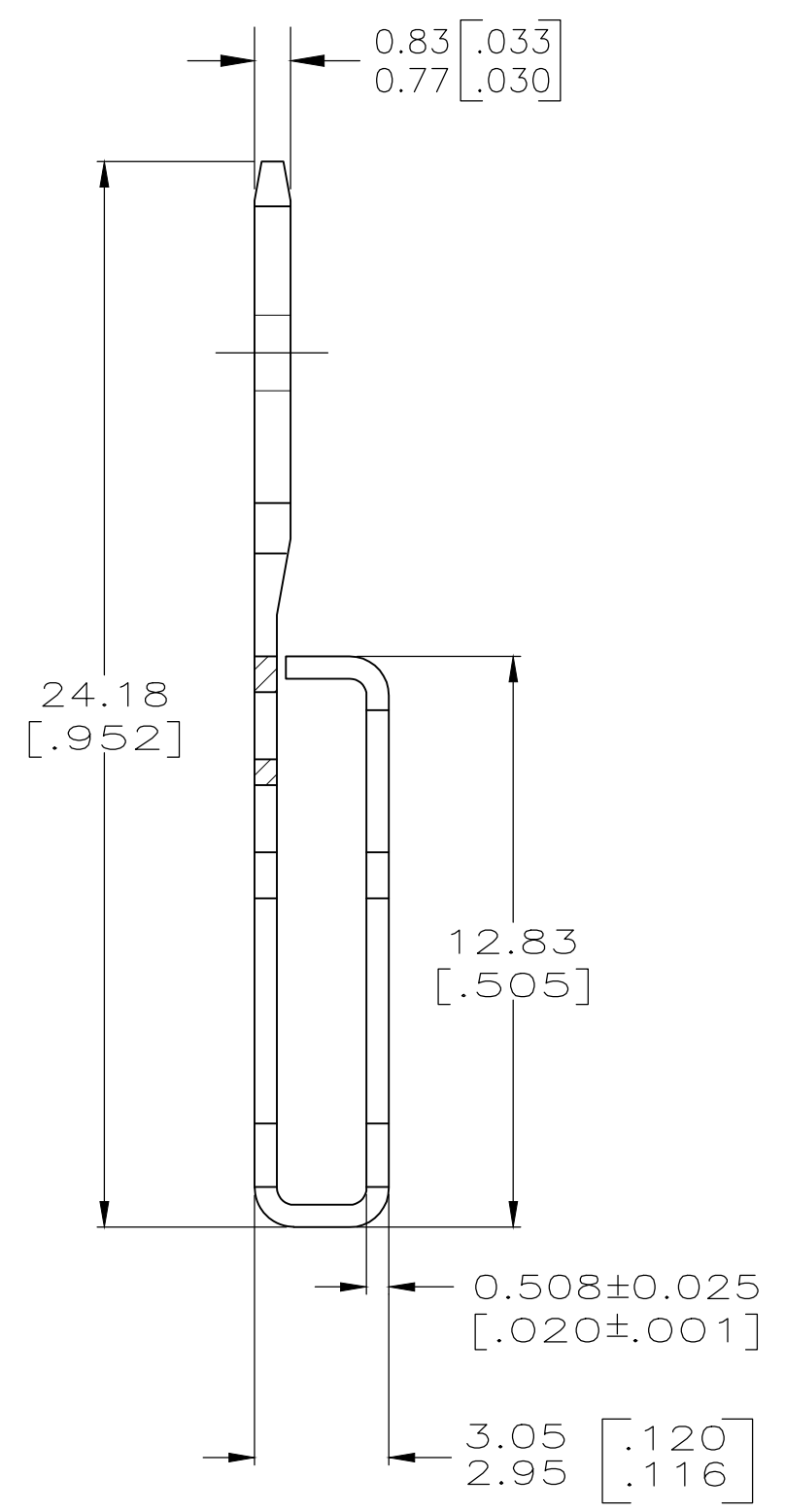
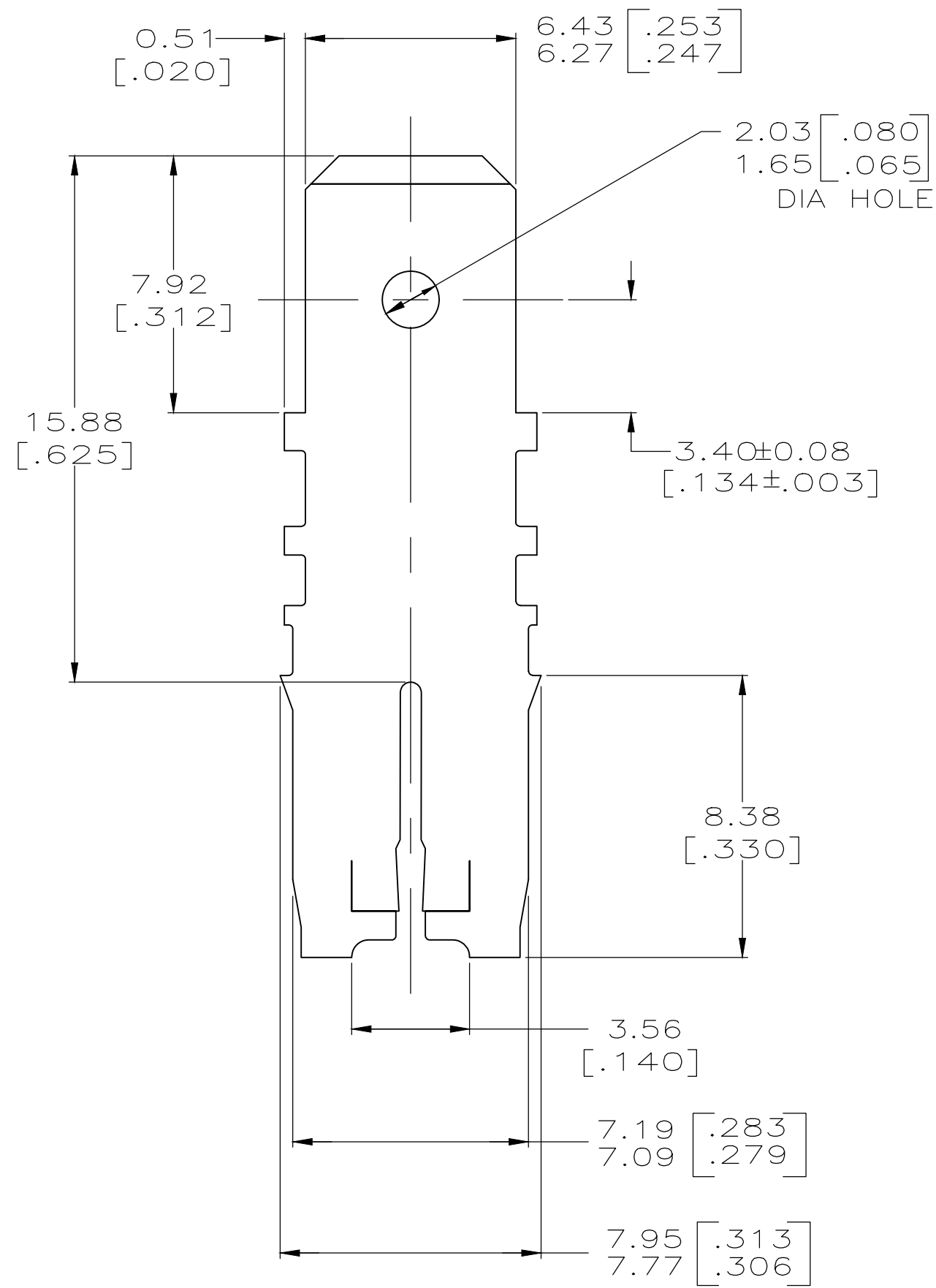


THIS DRAWING IS UNPUBLISHED. RELEASED FOR PUBLICATION
 © COPYRIGHT - By - ALL RIGHTS RESERVED.

LOC		DIST		REVISIONS			
P	LTR	DESCRIPTION		DATE	DWN	APVD	
AF	50	D4		REVISED PER ECR-19-013909	30SEP2019	PC MB	



- 1 SLOT ACCEPTS 0.91-1.15mm [#19-#17] AWG COPPER MAGNET WIRE. 2 WIRES OF THE SAME SIZE MAX PER SLOT. ALUMINIUM RANGE 0.95-1.15mm [#18.5-#17] AWG, ALUMINIUM WIRE RANGE APPLIES FOR POST TIN PLATED PART NUMBERS ONLY.
- 2 AFTER INSERTION INTO PLASTIC HOLDER TAB PORTION MUST BE BENT OVER 45° TO 90° OR POTTED-IN TO PREVENT PULL-OUT WHEN MATING RECEPTACLE IS DISCONNECTED.
- 3 0.002032 [.000080] MIN TIN PLATE.
- 4 VARNISH RESIST COATING OVER 0.002032 [.000080] MIN TIN PLATE
- 5 PRELIMINARY - NOT FOR PRODUCTION



	4	1-63598-1
OBSOLETE	3	5-63598-2
	4	63598-1
FINISH		PART NO

THIS DRAWING IS A CONTROLLED DOCUMENT.		DWN 25/OCT/94 PHILLIP M. FORTNEY	TE TE Connectivity	
DIMENSIONS: INCHES		CHK 25/OCT/94 MICHAEL S. FEHER		
TOLERANCES UNLESS OTHERWISE SPECIFIED:		APVD 25/OCT/94 NELSON E. NEFF	NAME	
0 PLC ± -		PRODUCT SPEC	TAB, LOOSE PIECE,	
1 PLC ± -		APPLICATION SPEC	6.35 [.250] FASTON™	
2 PLC ± 0.25 [.010]		108-2053	MAG-MATE™	
3 PLC ± -		114-2066	SIZE	CAGE CODE
4 PLC ± -		WEIGHT	A2	00779
ANGLES ± -		CUSTOMER DRAWING	SCALE	SHEET
FINISH SEE TABLE			6:1	1 OF 1
MATERIAL BRASS			REV	D4

单击下面可查看定价，库存，交付和生命周期等信息

[>>TE Connectivity\(泰科\)](#)