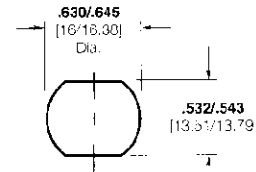
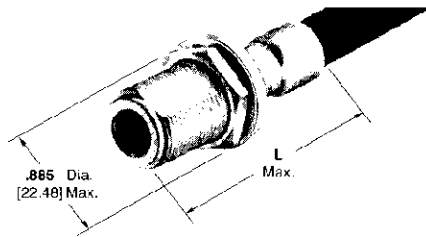


N Connectors, 50 Ohm (Continued)

Bulkhead Jacks, Crimp



Maximum Panel Thickness .250 [6.35]

Recommended Panel Cutout

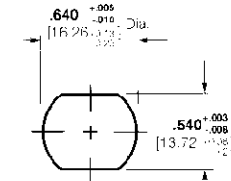
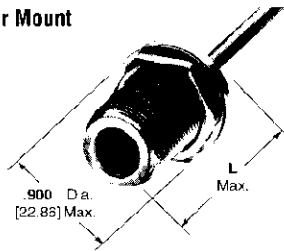
Connector Cable Range Selection Code†	RG/U Cable	Termination Type	Center Contact Plating	Body Plating	Dielectric	Style	M39012/ Military No. and/or Comments	Part No.	Dim. L	Integral Die Hand Tool
D	58, 58A, 58B, 58C	Dual Crimp	Gold	Silver	TEFLON	Mil Type	—	225363-1*	1.953 49.6	220045-2
		Dual Crimp	Gold	Nickel	TEFLON	Mil Type	Weatherproof	1-225668-2*	1.953 49.6	220045-2
E	223, 55, 55A, 55B	Dual Crimp	Gold	Silver	TEFLON	Mil Type	—	225363-2*	1.953 49.6	220045-2
		Dual Crimp	Gold	Silver	TEFLON	Mil Type	Weatherproof	225393-1*	1.953 49.6	220045-2
E1	142, 142A, 142E, 400	Dual Crimp	Gold	Silver	TEFLON	Mil Type	—	225363-4*	1.953 49.6	220045-2
G	124, 140, 210, 62, 62A, 62B, 59, 59A, 59B, Belden 9291, 920C, 9269, 89269	Dual Crimp	Gold	Silver	TEFLON	Mil Type	—	225363-6	1.780 45.21	220045-3
		Dual Crimp	Gold	Nickel	TEFLON	Mil Type	—	1-225667-6	1.953 49.61	220045-3
M	8, 8A, 213	Dual Crimp	Gold	Silver	TEFLON	Mil Type	038004 Weatherproof	225094-2	2.125 53.93	220015-1
M3	393	Dual Crimp	Gold	Nickel	TEFLON	Mil Type	Weatherproof	1-225668-1	2.125 53.93	220015-1
N	9, 9A, 9B, 214	Dual Crimp	Gold	Nickel	TEFLON	Mil Type	—	225667-1	1.953 49.61	220015-1
		Dual Crimp	Gold	Silver	TEFLON	Mil Type	038005 Weatherproof	225094-1	2.125 53.98	220015-1

†Refer to pages 14 and 15 for code specifications.

*Hand Tool 69710-1, Pneumatic Tools 69365 and 69365-3, with Die Insert 220052-1, are available to terminate these connectors.

Bulkhead Jacks for Semi-Rigid Cable

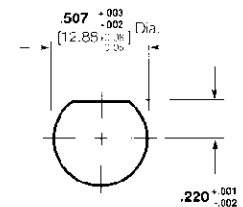
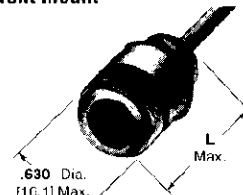
Rear Mount



Maximum Panel Thickness .250 [6.35]

Recommended Panel Cutout

Front Mount



Maximum Panel Thickness .250 [6.35]

Recommended Panel Cutout

Connector Cable Range Selection Code†	RG/U Cable	Termination Type	Center Contact Plating	Body Plating	Dielectric	Style	M39012/ Military No. and/or Comments	Part No.	Dim. L	Integral Die Hand Tool
O	402 Semi-Rigid; 141	Crimp	Gold	Nickel	TEFLON	Mil Type	Rear Mount	228558-1	1.156 29.37	-
		Crimp	Gold	Nickel	TEFLON	Mil Type	Front Mount	228448-1	1.156 29.37	-

†Refer to pages 14 and 15 for code specifications.

*Tooling — Hand Tool No. 59980-1, Requires (2) Crimping Dies No. 312253-1 and (1) Locator No. 220220-2.

Pneumatic Tool No. 58318-1, Requires (2) Crimping Dies No. 313720-1 and (1) Locator No. 220241-1.

**Tooling — Hand Tool No. 59980-1, Requires (2) Crimping Dies No. 312253-2 and (1) Locator No. 220221-2.

Pneumatic Tool No. 58318-1, Requires (2) Crimping Dies No. 313719-1 and (1) Locator No. 308075-2.

单击下面可查看定价，库存，交付和生命周期等信息

[>>TE Connectivity\(泰科\)](#)