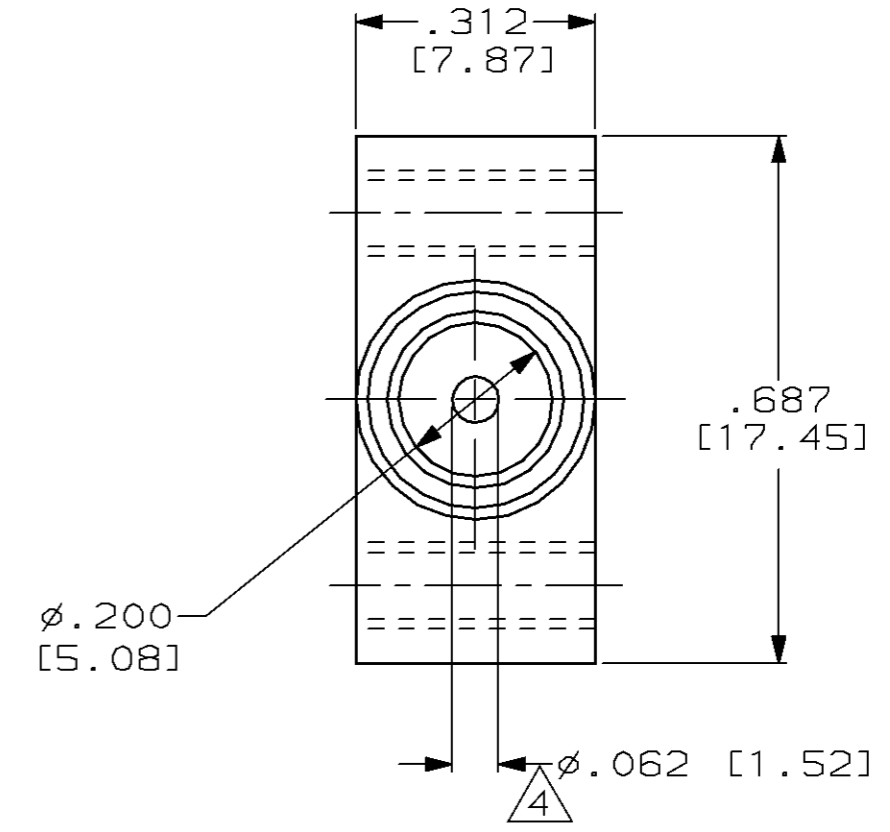
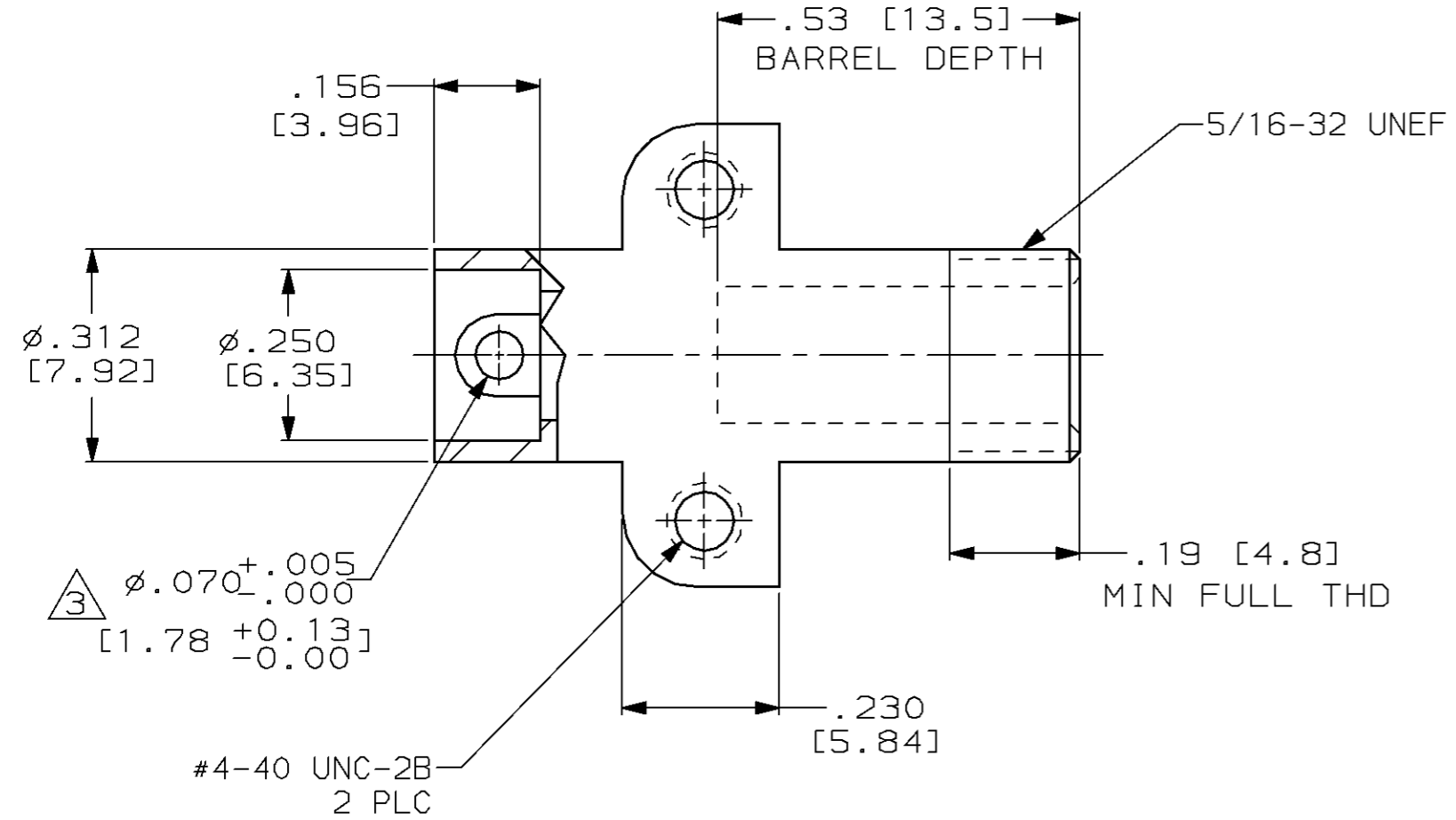


THIS DRAWING IS UNPUBLISHED. RELEASED FOR PUBLICATION ,19 .
 © COPYRIGHT 19 BY AMP INCORPORATED. ALL RIGHTS RESERVED.

LOC		DIST		REVISIONS			
P	LTR	DESCRIPTION		DATE	DWN	APVD	
DF	SO	B		REV PER 0600-2280-94	10-31-94	TT	-



- RECEPTACLE TO MATE WITH AMP LGH 1/2 LEAD ASSEMBLY AVAILABLE SEPARATELY.
- SPECIAL TESTING:
 GROUP "A" TEST:
 (1) VISUAL & MECHANICAL
 (2) INSULATION RESISTANCE: 5000 MEGOHM MIN
 EYELET TO BE SOLDER COATED WITH 63/37 SOLDER.
 PIN CONTACT PLATED WITH GOLD PER MIL-G-45204.



868094-1
 PART NO.

THIS DRAWING IS A CONTROLLED DOCUMENT FOR AMP INCORPORATED. IT IS SUBJECT TO CHANGE AND THE CONTROLLING ENGINEERING ORGANIZATION SHOULD BE CONTACTED FOR THE LATEST REVISION.		DWN C. C. THOMAS 6-25-96	AMP Incorporated Harrisburg, PA 17105-3608
DIMENSIONS: INCHES [mm]	TOLERANCES UNLESS OTHERWISE SPECIFIED:	CHK S. GLATFELTER 7-8-96	
	0 PLC ±-	APVD S. GLATFELTER 7-8-96	NAME LGH 1/2 RECEPTACLE WITH THREADED MOUNTING HOLES AND POTTING SHELL
	1 PLC ±-	PRODUCT SPEC	SIZE A3
MATERIAL	FINISH	APPLICATION SPEC	CAGE CODE 00779
		WEIGHT	DRAWING NO C-868094
		CUSTOMER DRAWING	SCALE 2:1
			SHEET 1 OF 1
			REV B

单击下面可查看定价，库存，交付和生命周期等信息

[>>TE Connectivity\(泰科\)](#)