

THIS DRAWING IS UNPUBLISHED.

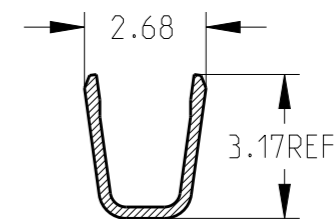
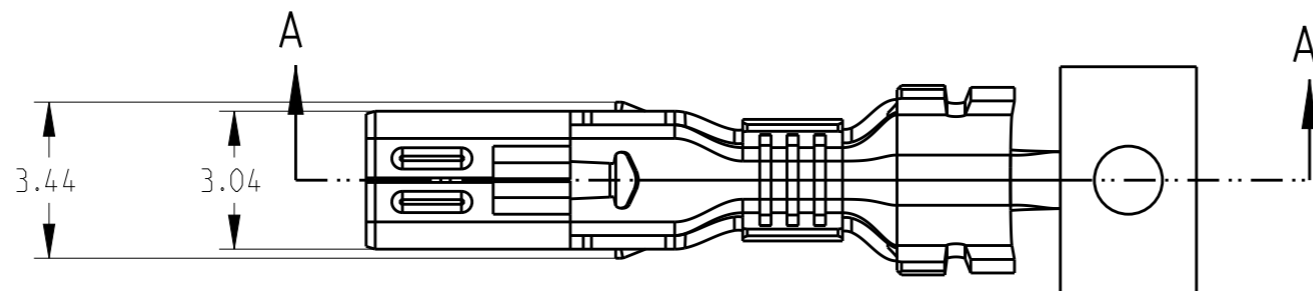
RELEASED FOR PUBLICATION

© COPYRIGHT 19 Y ALL RIGHTS RESERVED.

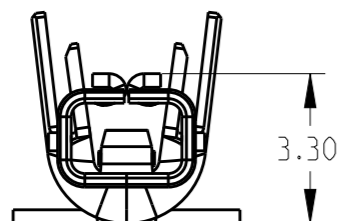
LOC ES DIST 00

REVISIONS

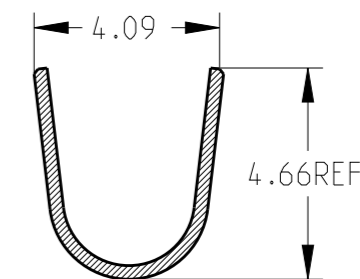
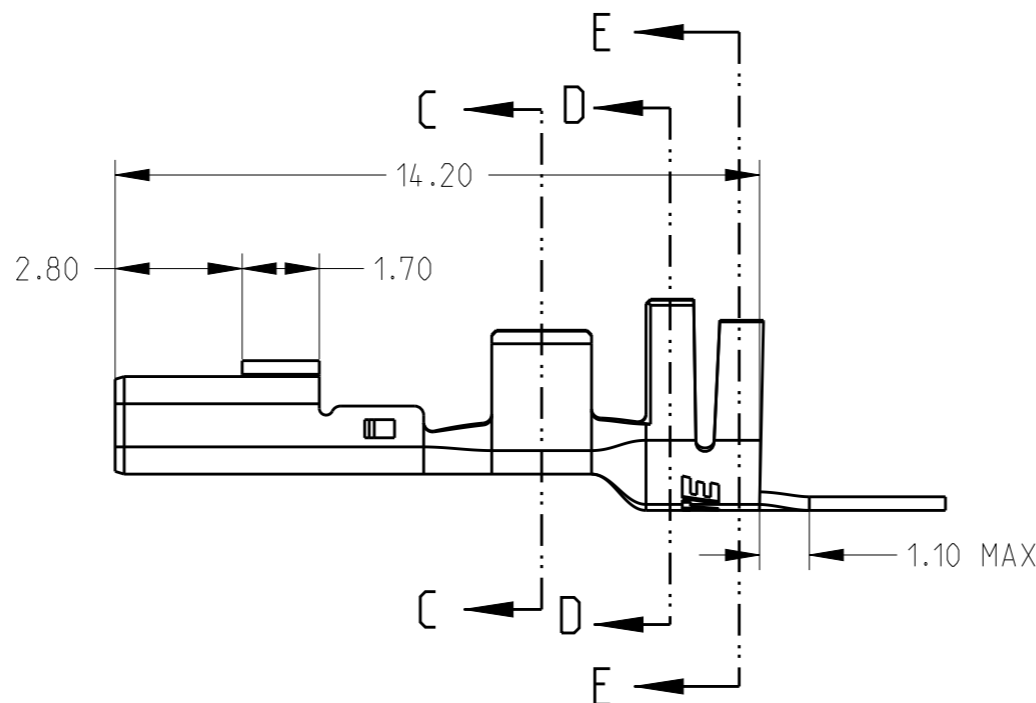
P	LTR	DESCRIPTION	DATE	DWN	APVD
	A2	REVISED PER ECR-19-003481	17 JUN19	N.L	D.Z



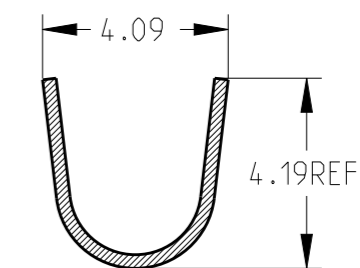
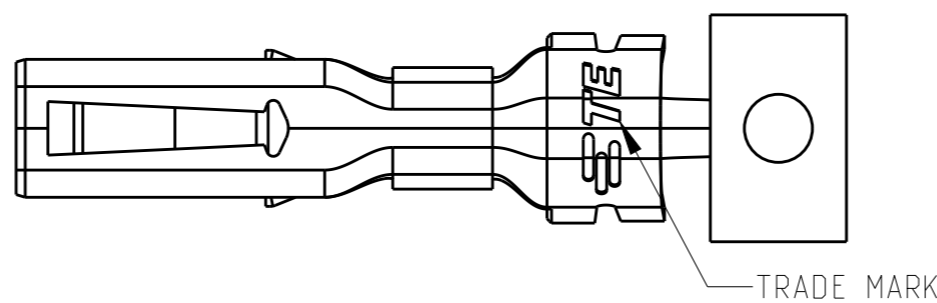
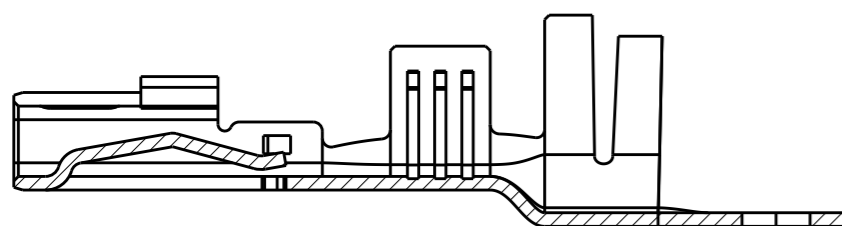
SECTION C-C



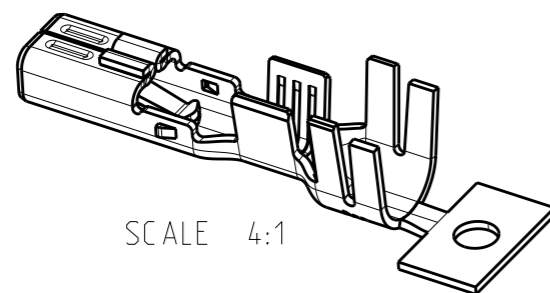
SECTION A-A



SECTION D-D



SECTION E-E



SCALE 4:1

NOTE:

- 1.MATERIAL: COPPER ALLOY, PRE-TINNED
- 2.APPLICABLE HOUSING P/N: 1983658-*, 1983659-*, 1983660-*
- 3.APPLICABLE WIRE RANGE: 16~20AWG

THIS DRAWING IS A CONTROLLED DOCUMENT.

DIMENSIONS:	TOLERANCES UNLESS OTHERWISE SPECIFIED:
mm	
	0 PLC ±-
	1 PLC ±1.0
	2 PLC ±0.50
	3 PLC ±0.300
	4 PLC ±0.2000
	ANGLES ±-
MATERIAL -	FINISH -

DWN	LEO LIU	19AUG2011
CHK	HAPYE WU	19AUG2011
APVD	ERIC KONG	19AUG2011
PRODUCT SPEC	108-106071	
APPLICATION SPEC	114-106071	
WEIGHT	-	
RESTRICTED CUSTOMER		

TE Connectivity		NAME	
		REC. CONTACT MULTI 6P CONNECTOR	
SIZE	CAGE CODE	DRAWING NO	RESTRICTED TO
A3	-	©=1983663	
SCALE N/A		SHEET 1 OF 1	REV A2

4000PCS/REEL	3-1983663-1
5000PCS/REEL	1983663-1
UNIT PKG QTY	PART NO.

单击下面可查看定价，库存，交付和生命周期等信息

[>>TE Connectivity\(泰科\)](#)